

TIE POINT: THE NW CORNER OF MG280 LIES APPROXIMATELY 1,084 FEET EAST AND 562 FEET NORTH OF THE SURVEYED SOUTHWEST CORNER OF SECTION 4, T.1N., R.66E., M.D.B.M.

2

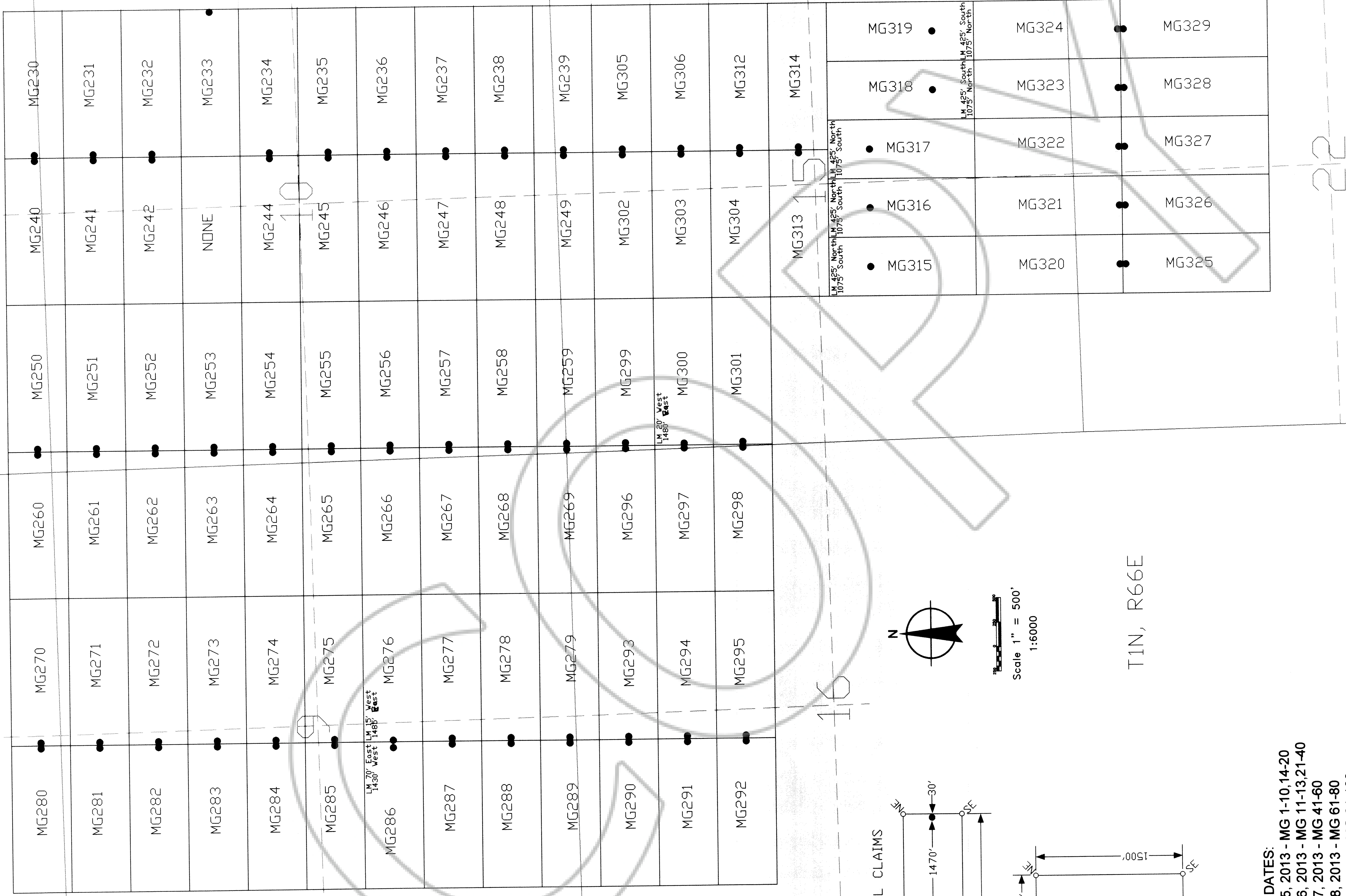
3

4

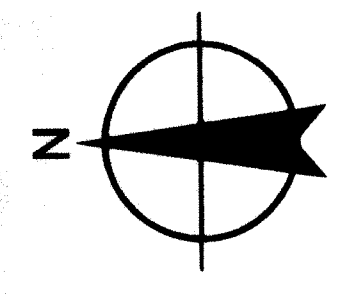
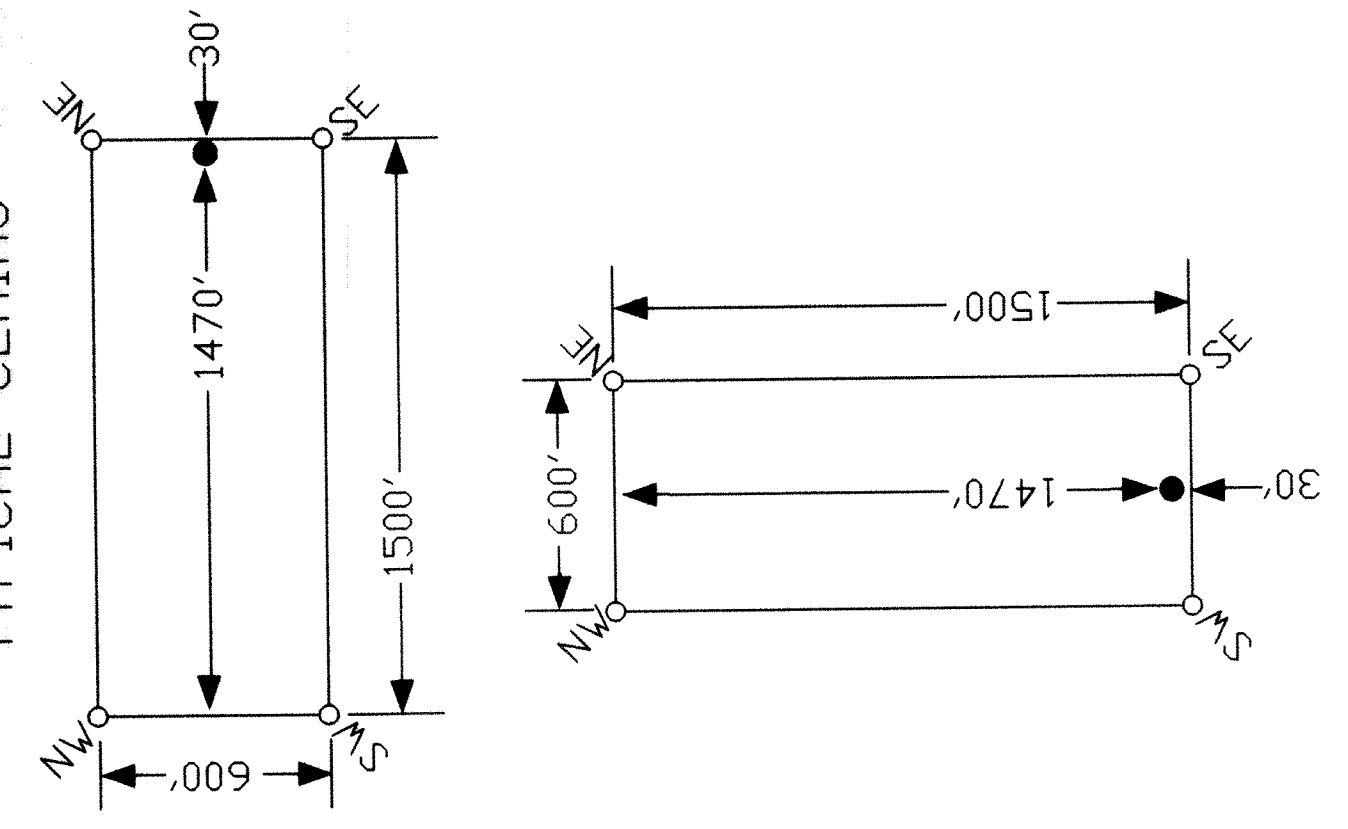
11

16

22



TYPICAL CLAIMS



Scale 1" = 500'
1:6000

T1N, R66E

LOCATION DATES:

- September 5, 2013 - MG 1-10,14-20
- September 6, 2013 - MG 11-13,21-40
- September 7, 2013 - MG 41-60
- September 8, 2013 - MG 61-80
- September 9, 2013 - MG 81-100
- September 10, 2013 - MG 101-108,111-127,129-140
- September 11, 2013 - MG 128
- September 12, 2013 - MG 141-179
- September 13, 2013 - MG 180-209
- September 14, 2013 - MG 210-229,307-311
- September 15, 2013 - MG 230-242,244-249,257-259,267-269,296-306
- September 16, 2013 - MG 250-256,260-266,285-286,275-276
- September 17, 2013 - MG 270-274,277-284,287-295
- November 15, 2013 - MG 312-329

(326 Total Claims)

Notes: Location monuments are set 30' from claim end lines along claim center lines unless noted otherwise. All location and corner monuments are 1.5' x 1.5' x 4' wooden posts with scribed metal tags. All claims are 600' by 1500'.

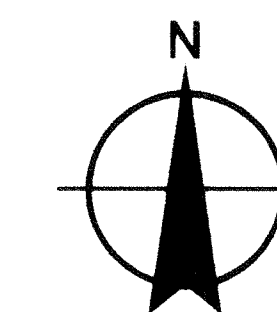
DOC # 0144647
11/19/2013 8:38 AM
Official Record
Recording requested by
TERRA ROSSA GOLD LTD.
Lincoln County - NV
Leslie Boucher - Recorder
Fee \$4,894.00 Page 1 of 3
8971 Recorded By: RB
Book-283 Page-0710

0144647

Locator: Jeffrey O. Dean, Agent for:
Terra Rossa Gold Ltd.
1930 Lassen Drive, Reno, Nevada 89503
MG 1-108,111-242,244-329 Lode Claims
T.1N.,R.66&67E.; Lincoln County, Nevada

DRAWN BY
Job
ACAD FILE NAME
(sheet) (3) Dean/Job/Job.dwg
DATE: November 2013 PLOT SCALE
1" = 500'

TIE POINT: THE NW CORNER OF MG220 LIES APPROXIMATELY 10,084 FEET EAST AND 562 FEET NORTH OF THE SURVEYED SOUTHWEST CORNER OF SECTION 4, T.1N., R.66E., M.D.B.M.



Scale 1" = 500'
1:6000

MG220	●	MG210	MG180	●	MG185	MG190	●	MG195	MG200	●	MG205
MG221	●	MG211	MG181	●	MG186	MG191	●	MG196	MG201	●	MG206
MG222	●	MG212	MG182	●	MG187	MG192	●	MG197	MG202	●	MG207
MG223	●	MG213	MG183	●	MG188	MG193	●	MG198	MG203	●	MG208
MG224	●	MG214	MG184	●	MG189	MG194	●	MG199	MG204	●	MG209
MG225	●	MG215	MG101	●	MG111	MG121	●	MG131	MG141	●	MG151
MG226	●	MG216	MG102	●	MG112	MG122	●	MG132	MG142	●	MG152
MG227	●	MG217	MG103	●	MG113	MG123	●	MG133	MG143	●	MG153
MG228	●	MG218	MG104	●	MG114	MG124	●	MG134	MG144	●	MG154
MG229	●	MG219	MG105	●	MG115	MG125	●	MG135	MG145	●	MG155
MG307	●	MG309	MG106	●	MG116	MG126	●	MG136	MG146	●	MG156
MG308	●	MG310	MG107	●	MG117	MG127	●	MG137	MG147	●	MG157

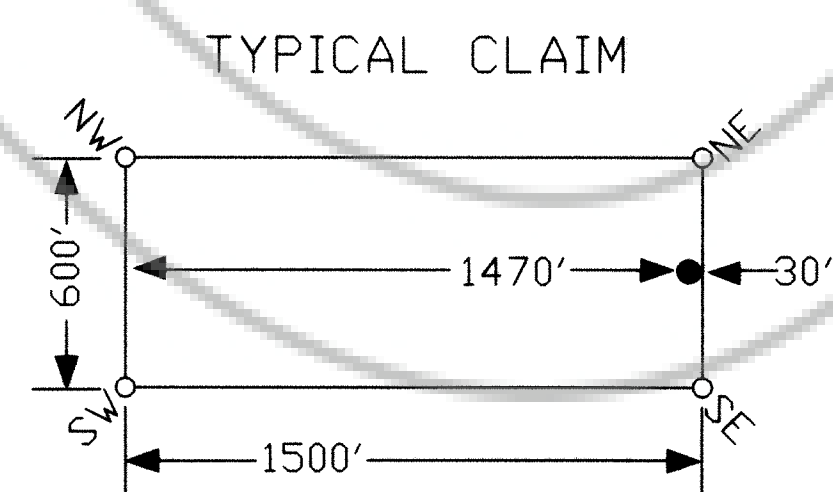
LOCATION DATES:

- September 5, 2013 - MG 1-10,14-20
- September 6, 2013 - MG 11-13,21-40
- September 7, 2013 - MG 41-60
- September 8, 2013 - MG 61-80
- September 9, 2013 - MG 81-100
- September 10, 2013 - MG 101-108,111-127,129-140
- September 11, 2013 - MG 128
- September 12, 2013 - MG 141-179
- September 13, 2013 - MG 180-209
- September 14, 2013 - MG 210-229,307-311
- September 15, 2013 - MG 230-242,244-249,257-259,267-269,296-306
- September 16, 2013 - MG 250-256,260-266,285-286,275-276
- September 17, 2013 - MG 270-274,277-284,287-295
- November 15, 2013 - MG 312-329

(326 Total Claims)

LM 20' West
1480' East

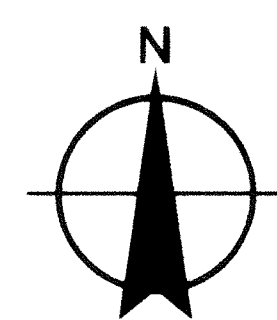
CONTINUED ON SHEET 3



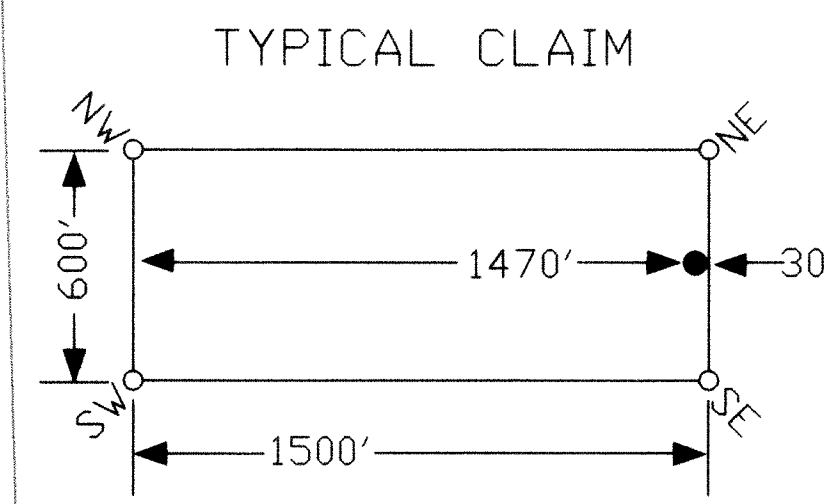
Notes: Location monuments are set 30' from claim end lines along claim center lines unless noted otherwise. All location and corner monuments are 1.5" x 1.5" x 4' wooden posts with scribed metal tags. All claims are 600' by 1500'

0144647 Page 751

Locator: Jeffrey O. Dean, Agent for: Terra Rossa Gold Ltd. 1930 Lassen Drive, Reno, Nevada 89503 MG 1-108,111-242,244-329 Lode Claims T.1N.,R.66&67E.; Lincoln County, Nevada		
DATE: November 2013	ACAD FILE NAME client\13\dean\plots.dwg	DRAWN BY jod
PLOT SCALE 1" = 500'		SHEET 2 OF 3



Scale 1" = 500'
1:6000



MG311	MG108	MG118	MG128	MG138	MG148	MG158	MG161	MG164	MG167
	MG119	MG129	MG139	MG149	MG159	MG162	MG165	MG168	
	MG120	MG130	MG140	MG150	MG160	MG163	MG166	MG169	
MG1	MG11	MG21	MG31	MG41	MG51	MG61	MG71	MG170	
MG2	MG12	MG22	MG32	MG42	MG52	MG62	MG72	MG171	
MG3	MG13	MG23	MG33	MG43	MG53	MG63	MG73	MG172	
MG4	MG14	MG24	MG34	MG44	MG54	MG64	MG74	MG173	
MG5	MG15	MG25	MG35	MG45	MG55	MG65	MG75	MG174	
MG6	MG16	MG26	MG36	MG46	MG56	MG66	MG76	MG175	
MG7	MG17	MG27	MG37	MG47	MG57	MG67	MG77	MG176	
MG8	MG18	MG28	MG38	MG48	MG58	MG68	MG78	MG177	
MG9	MG19	MG29	MG39	MG49	MG59	MG69	MG79	MG178	
MG10	MG20	MG30	MG40	MG50	MG60	MG70	MG80	MG179	
				MG81	MG85	MG89	MG93	MG97	
				MG82	MG86	MG90	MG94	MG98	
				MG83	MG87	MG91	MG95	MG99	
				MG84	MG88	MG92	MG96	MG100	

LOCATION DATES:
September 5, 2013 - MG 1-10,14-20
September 6, 2013 - MG 11-13,21-40
September 7, 2013 - MG 41-60
September 8, 2013 - MG 61-80
September 9, 2013 - MG 81-100
September 10, 2013 - MG 101-108,111-127,129-140
September 11, 2013 - MG 128
September 12, 2013 - MG 141-179
September 13, 2013 - MG 180-209
September 14, 2013 - MG 210-229,307-311
September 15, 2013 - MG 230-242,244-249,257-259,267-269,296-306
September 16, 2013 - MG 250-256,260-266,285-286,275-276
September 17, 2013 - MG 270-274,277-284,287-295
November 15, 2013 - MG 312-329
(326 Total Claims)

TIE POINT: THE SW CORNER OF MG10 LIES APPROXIMATELY 13,084 FEET EAST AND 14,438 FEET SOUTH OF THE SURVEYED SOUTHWEST CORNER OF SECTION 4, T.1N., R.66E., M.D.B.M.

Location: Jeffrey O. Dean, Agent for:
Terra Rossa Gold Ltd.
1930 Lassen Drive, Reno, Nevada 89503
MG 1-108,111-242,244-329 Lode Claims
T.1N.,R.66&67E.; Lincoln County, Nevada

Notes: Location monuments are set 30' from claim end lines along claim center lines unless noted otherwise. All location and corner monuments are 1.5" x 1.5" x 4' wooden posts with scribed metal tags. All claims are 600' by 1500'