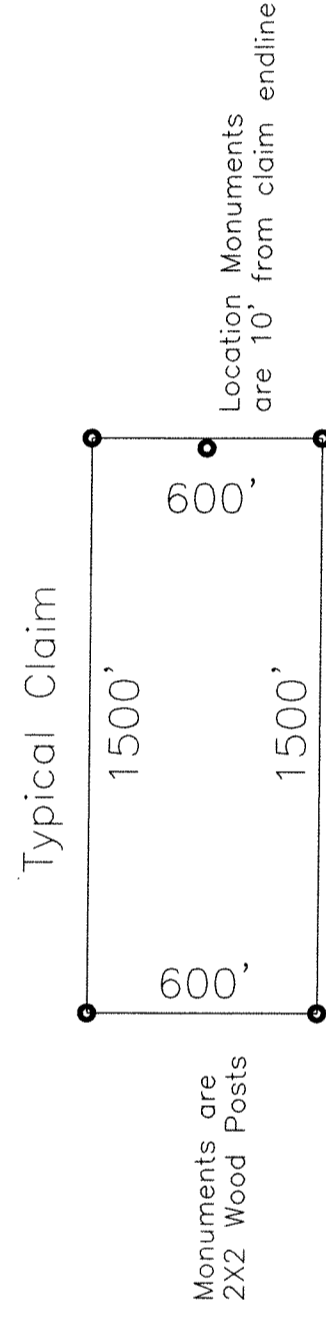


LP13 LODGE MINING CLAIMS

CLAIM MAP
 T4S, R58E, MDBM
 LINCOLN COUNTY NEVADA
 AURION RESOURCES (US) LLC
 2711 Centerville Road, Suite 400
 WILMINGTON, DELAWARE 19808
 Drawn By: RBL Date: Oct 2013
 AutoCad 2010 Drawing File: LP Claims Oct2013.DWG
 Survey and Map by
 LYMAN EXPLORATION & SURVEYING OUTFIT
 612 West 1635 North, Suite 101, Clinton, UT 84015
 (801)540-0317



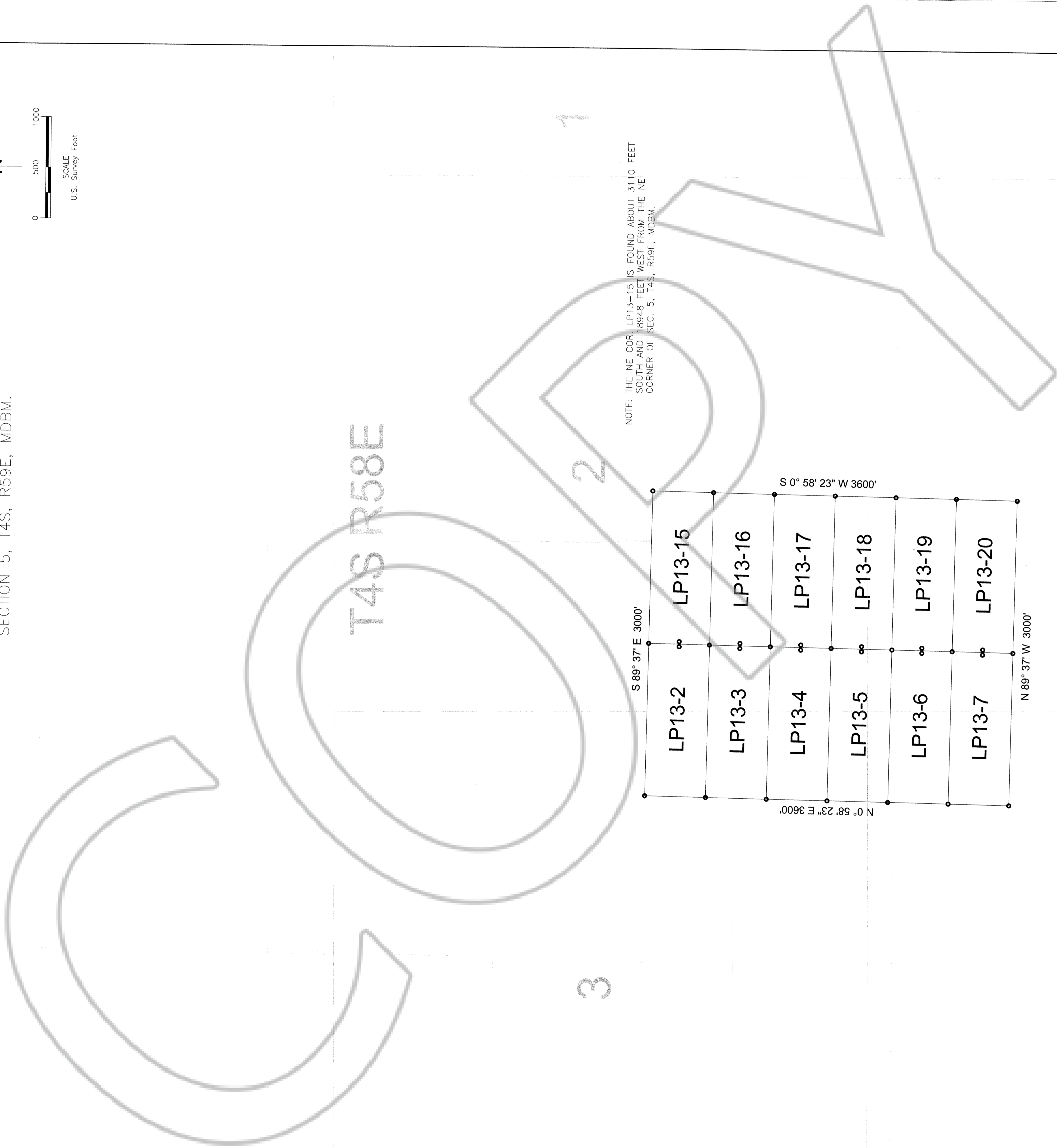
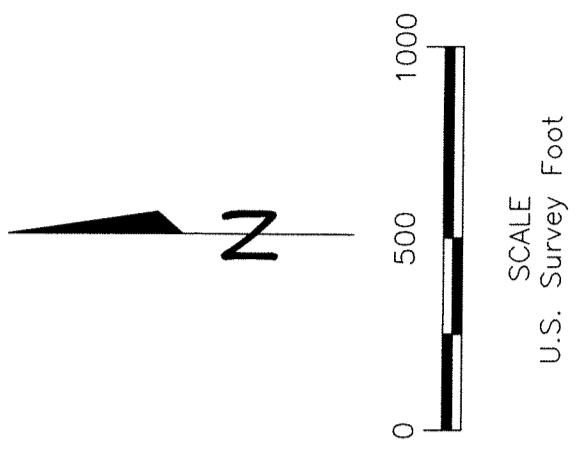
EXPLANATION

- + Found PLS Monument
- Projected Section Lines
- Lode Mining Claim Monument

Sheet 1 of 2

LOCATION DATES:
 LP13 2-7,15-20 OCT 29, 2013

LP13 CLAIMS ARE TIED TO THE NE CORNER OF SECTION 5, T4S, R59E, MDBM.



10

11

12

R59E

30

29

28

31

33

T3S

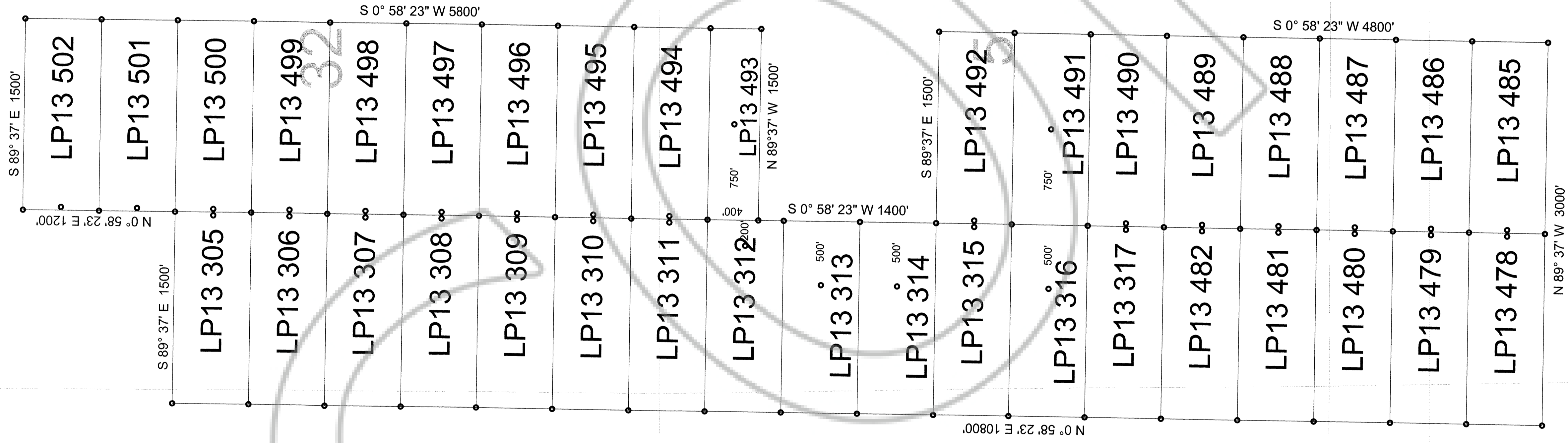
T4S

6

4

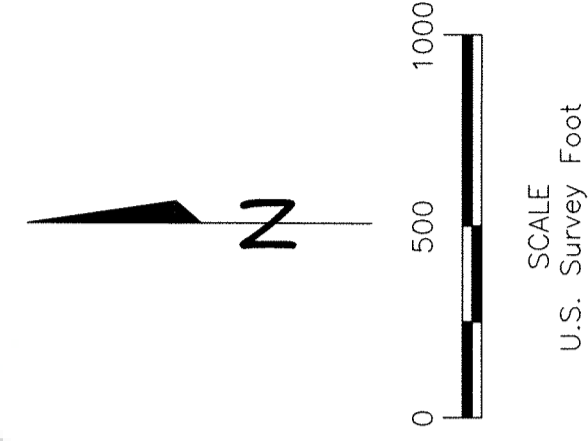
7

8



LP13 CLAIMS ARE TIED TO THE NE CORNER OF SECTION 5, T4S, R59E, MDBM.

NOTE: THE SW COR. LP13 478 IS FOUND ABOUT 6939 FEET SOUTH AND 5511 FEET WEST FROM THE NE CORNER OF SEC. 5, T4S, R59E, MDBM.

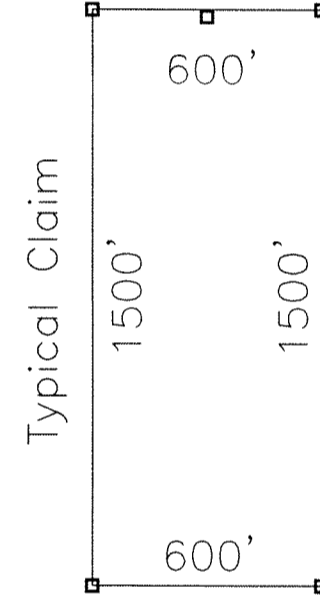


LOCATION DATES:
LP13 305-317, 478-482, 485-502 OCT 29, 2013

Sheet 2 of 2

EXPLANATION

- + Found PLS Monument
- - - Projected Section Lines
- Lode Mining Claim Monument



Monuments are 2x2 Wood Posts

0144301 11/12/2013 11:12:2013

LP13 LODE MINING CLAIMS

CLAIM MAP

T3&4S, R59E, MDBM
LINCOLN COUNTY NEVADA
AURION RESOURCES (US) LLC
2711 Centerville Road, Suite 400
WILMINGTON, DELAWARE 19808
Drawn By: RBL Date: Oct 2013
AutoCad 2010 Drawing File: LP Claims Oct2013.DWG
Survey and Map by:
LYMAN EXPLORATION & SURVEYING OUTFIT
612 West 1635 North, Suite 101, Clifton, UT 84015
(801)540-0317