



Map of B5 thru B8 Lode Claims

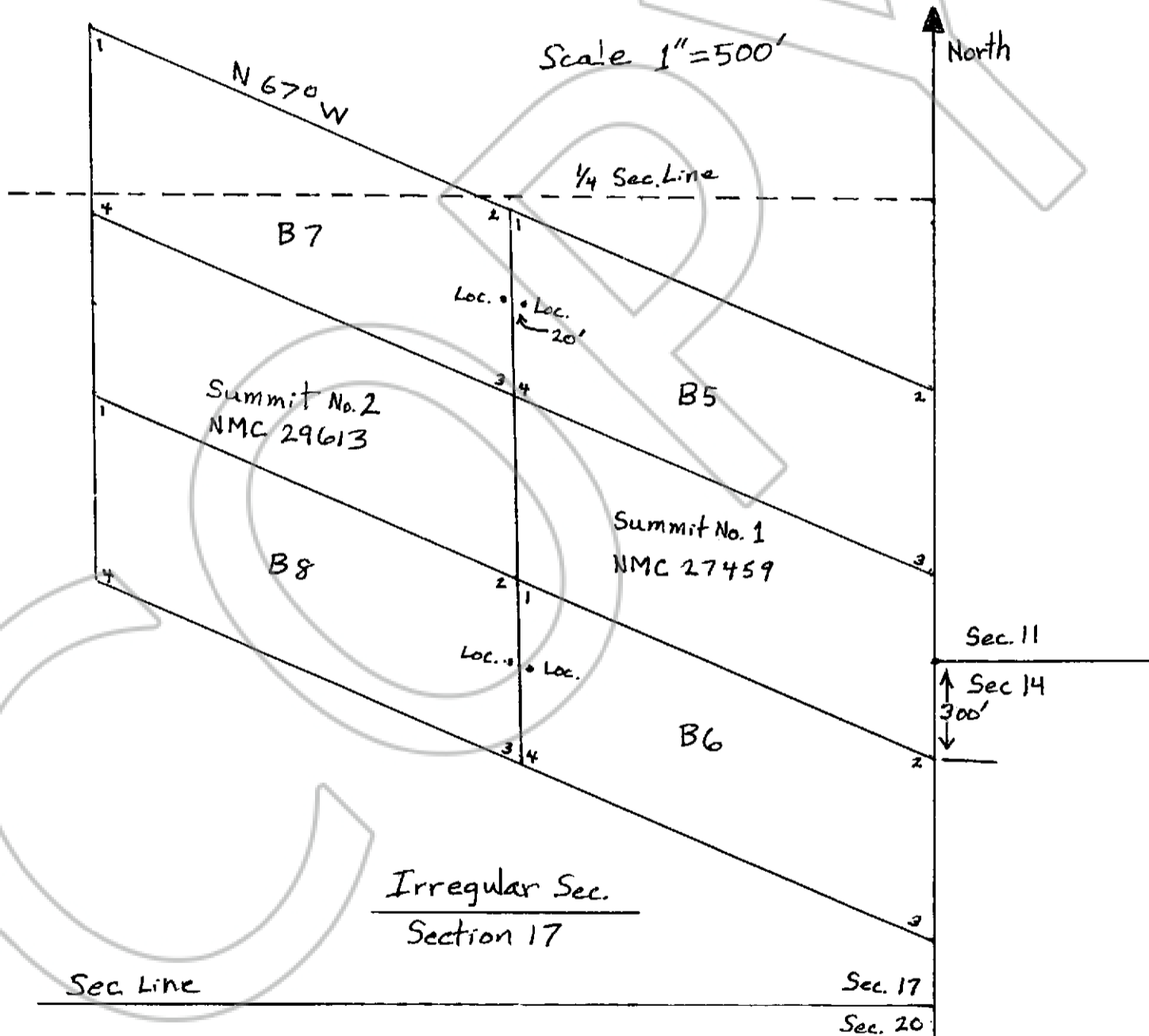
Lincoln County, Nevada

Located By: North Exploration LLC

1295 N. Bluff
St. George, UT 84770

Location Date: 2nd September 2013

In: NW 1/4 & SW 1/4 Sec. 17 T3N R7E
MDB+M



The NE Cor. B6 is 300' So. of the NW Cor. Sec. 14
T31S R20W SLB+M.

Note: All monuments are 1 1/2" x 1 1/2" Wood posts
4' long with metal tags.

Lincoln Co. Nevada
Iron Co. UTAH