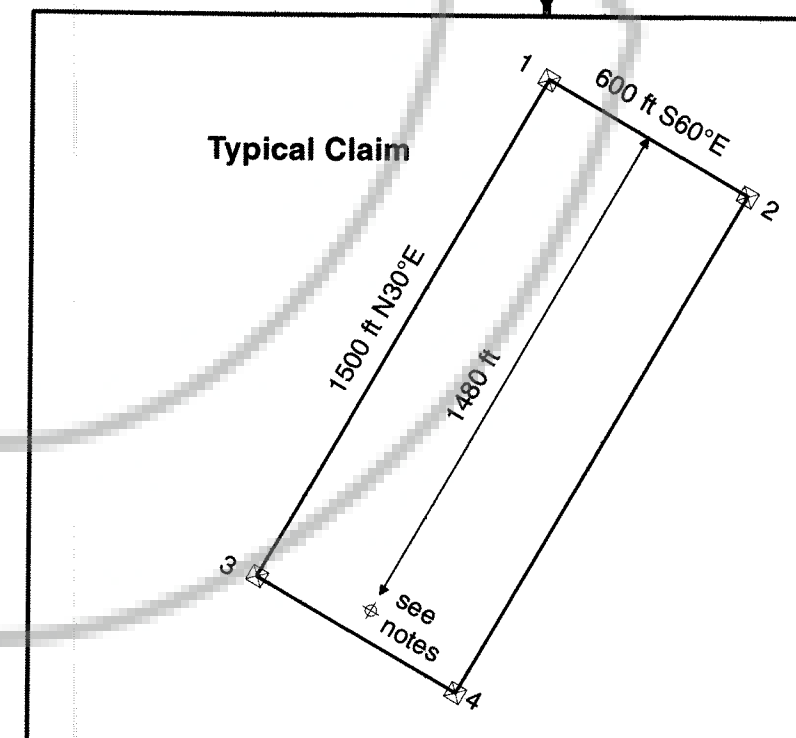


Iron County, UTAH  
 Lincoln County, NEVADA  
 T. 33S  
 R. 20W  
 11

Southwest corner of GBM 14 is  
 5,082 feet north and 2,141 feet east  
 of southwest corner of T. 1N R. 71E Section 18

Southeast corner of GBM 19 is  
 2,785 feet north and 125 feet east  
 of southwest corner of T. 1N R. 71E Section 18

T. 1N R. 70E  
 T. 1N R. 71E

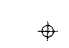







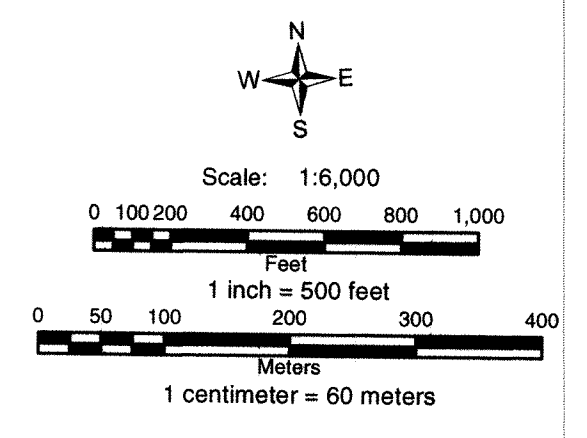
**Location Dates**  
 GBM 14 and 19  
 lode claims were located on Sep. 1, 2013.

**Location Monuments**  
 Location monument for GBM 14 is set 200 feet from endline.  
 Location monument for GBM 19 is set 10 feet from endline.

**Notes:**  
 All location monuments are 2"x2"x4" wooden posts with scribed metal tags.  
 All claims are 600'x1500'.

**Locator:**  
 Nevada Eagle Resources LLC  
 1655 Mountain City Highway  
 Elko, NV 89801

- Legend**
-  Location Monuments
  -  Claims
  -  Tie line
  -  Sections (BLM GCDB)
  -  Townships
  -  Section Corner



**GBM 14 and 19  
 Unpatented Lode Mining Claims**

Township 1 North, Range 70 East  
 Section 13  
 Township 1 North, Range 71 East  
 Sections 7 and 18  
 Mt. Diablo Base Line and Meridian  
 Lincoln County, Nevada