

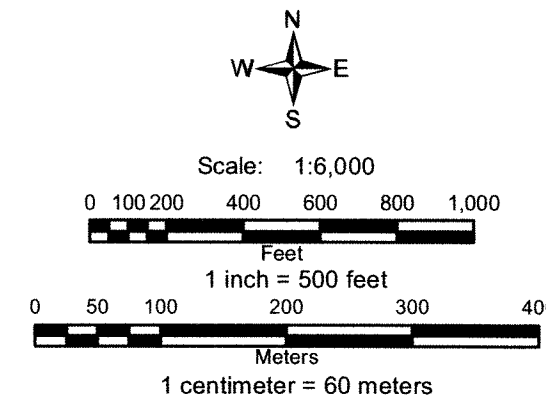
Location Dates
 GOLD 108-109, 208-209, 308-309, 318, 408-409, 418-419, 518-520, 618-620, 716, 718-720, 817-820, 917-920, and 1017 lode claims were located on May 11, 2013.

Location Monuments
 Location monument is set 20 feet from endline.

Notes:
 All location monuments are 2"x2"x4" wooden posts with scribed metal tags.
 All claims are 600'x1500', except GOLD 318, which is 600'x650', and GOLD 418 and 419, which are 600'x1400'.

Locator:
 Pilot Gold (USA) Inc.
 1031 Railroad St., Suite 110
 Elko, NV 89801

- Legend**
- ◆ Location Monuments
 - ▭ Claims
 - - - Tie line
 - ▭ Sections (BLM GCDB)
 - ▭ Townships
 - ◆ Section Corner

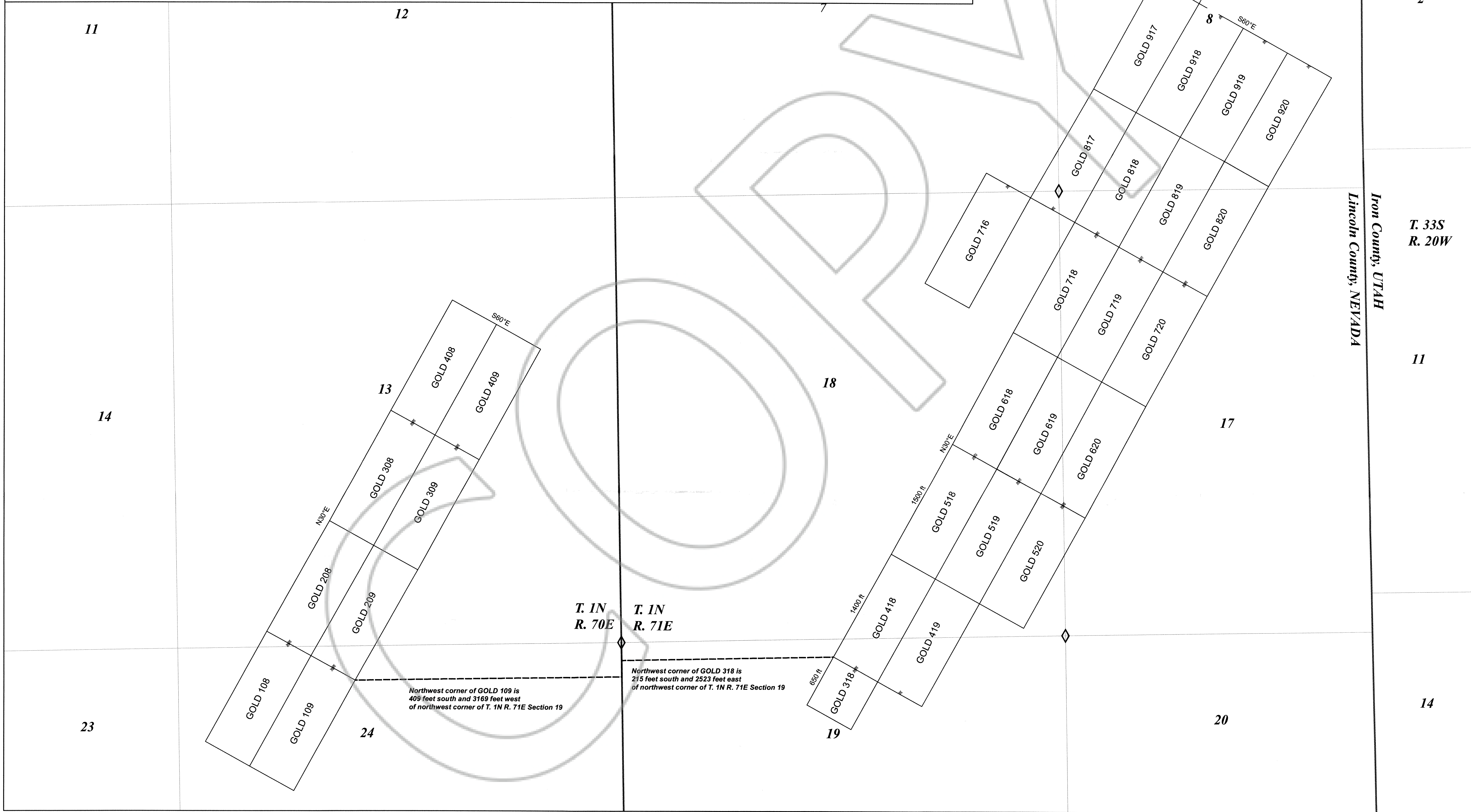
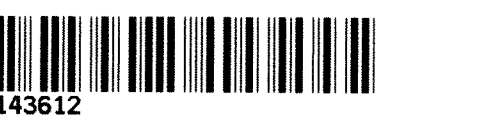


GOLD 108-109, 208-209, 308-309, 318, 408-409, 418-419, 518-520, 618-620, 716, 718-720, 817-820, 917-920, and 1017 Unpatented Lode Mining Claims

Township 1 North, Range 70 East
 Sections 13 and 24
 Township 1 North, Range 71 East
 Sections 7, 8, 17, 18, and 19
 Mt. Diablo Base Line and Meridian
 Lincoln County, Nevada

Drawn by: GSH
 Document Name: GOLD Jan 2013 claims for county filing 10.1.mxd
 5-May-2013

DOC # 0143612
 06/21/2013 01:36 PM
Official Record
 Recording requested by
 PILOT GOLD (USA) INC.
 Lincoln County - NV
 Leslie Boucher - Recorder
 Fee: \$454.00 Page: 1 of 1
 RPT: Recorded By: RE
 Book-280 Page-0062



Iron County, UTAH
 Lincoln County, NEVADA
 T. 33S
 R. 20W
 11

2

11

14