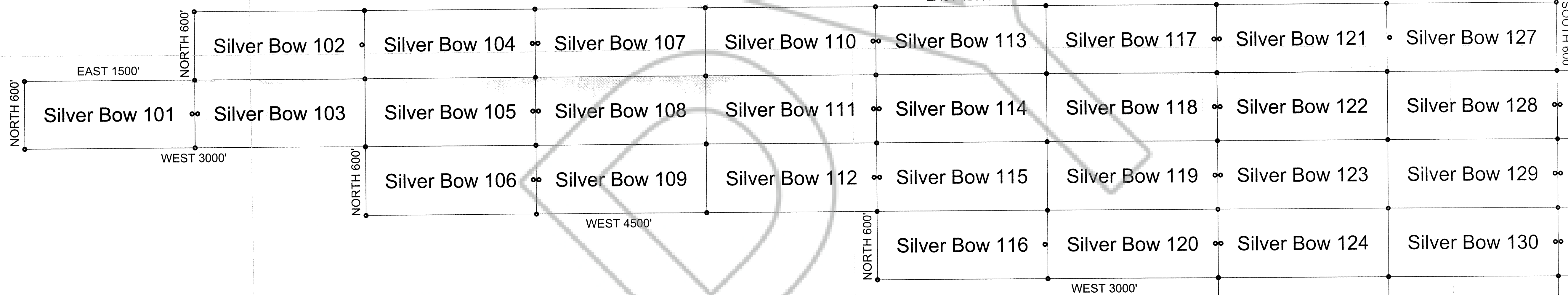


29

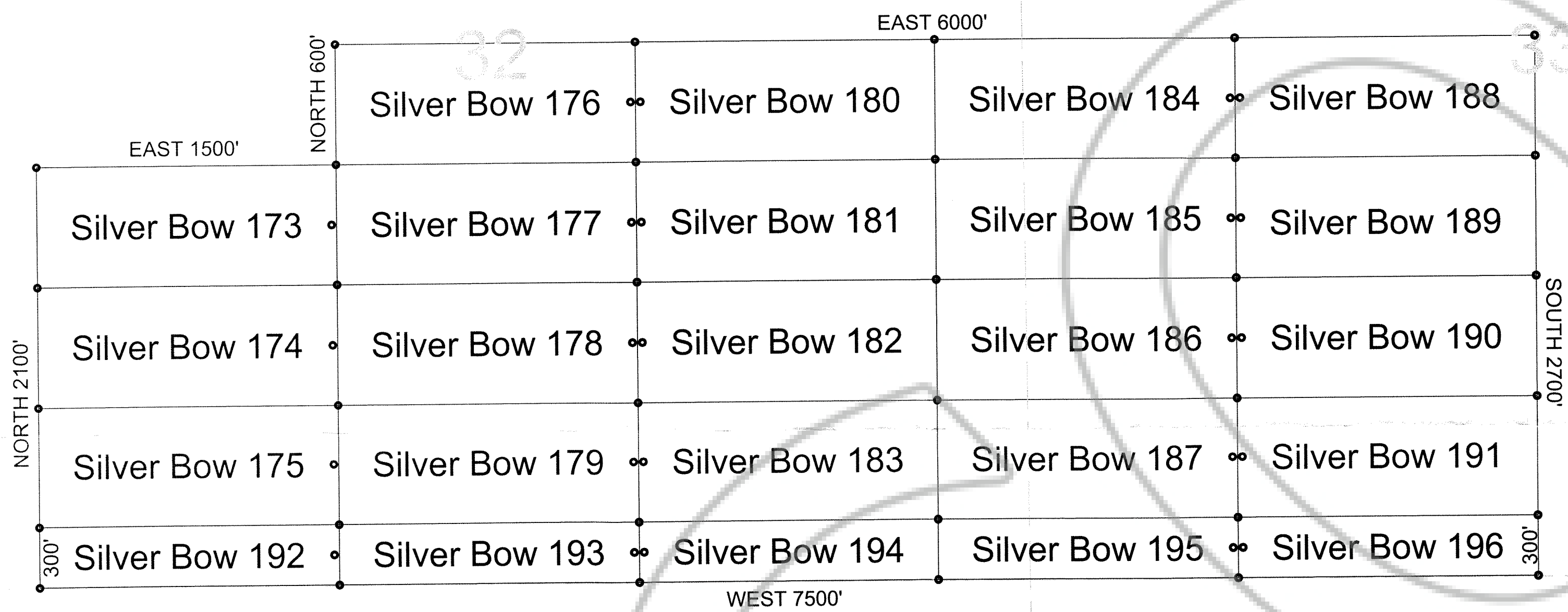
28

27

THE NW CORNER OF SILVER BOW 102 LIES 5664 FEET NORTH AND 11095 FEET WEST FROM THE SW CORNER OF SECTION 35, T1N, R49E, MDBM.

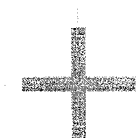


THE NE CORNER OF SILVER BOW 188 LIES 2702 FEET NORTH AND 8020 FEET WEST FROM THE SW CORNER OF SECTION 35, T1N, R49E, MDBM.



34

T1N R49E

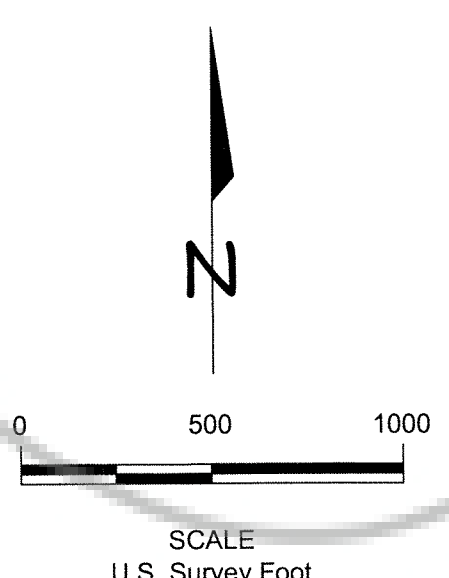
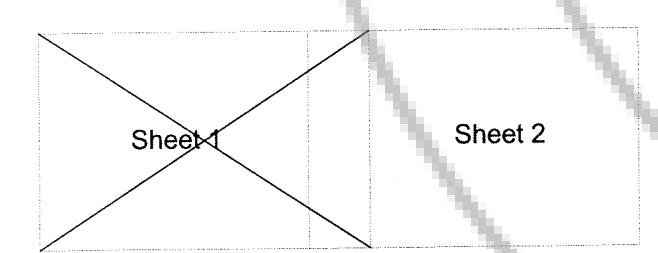
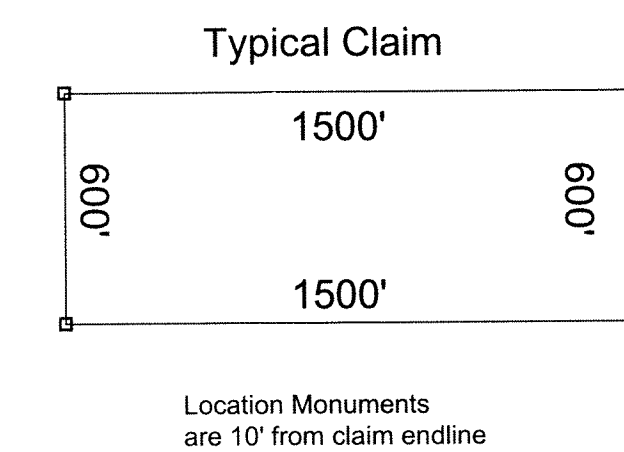


LOCATION DATES:
 SILVER BOW 176-191,193-196 October 28, 2012
 SILVER BOW 150,157,164-172,199 October 29,2012
 SILVER BOW 143,146-149,151-156,158-163,197,198 October 30, 2012
 SILVER BOW 116-142,144,145 October 31, 2012
 SILVER BOW 101-115,173-175,192 November 1, 2012

SILVER BOW CLAIMS ARE TIED TO THE SW CORNER OF SECTION 35, T1N, R49E, MDBM.

EXPLANATION

- Found PLS Monument
- Projected Section Lines
- Lode Mining Claim Monument
- Adjoining Mining Claim



Sheet 1 of 2

SILVER BOW LODE MINING CLAIMS

CLAIM MAP
T2N, R49&50E, MDBM
LINCOLN COUNTY NEVADA

AURION RESOURCES (US) LLC
2711 Centerville Road, Suite 400
WILMINGTON, DELAWARE 19808

Drawn By: RBL Date: October 2012

AutoCad 2010 Drawing File: SILVER BOW Claims Local.DWG

Survey and Map by:
LYMAN EXPLORATION & SURVEYING OUTFIT
612 West 1635 North, Suite 101, Clinton, UT 84015
(801) 540-0317

DOC # 0142623

07/18/2013 04:07 PM

Official Record

Recording requested by:
LYMAN EXPLORATION & SURVEY OUTFIT

Lincoln County - NV

Leslie Boucher - Recorder

Fee: \$1,489.00 Page: 1 of 2

9511 Recorded By: LB

Book- 276 Page- 0385

0142623

27

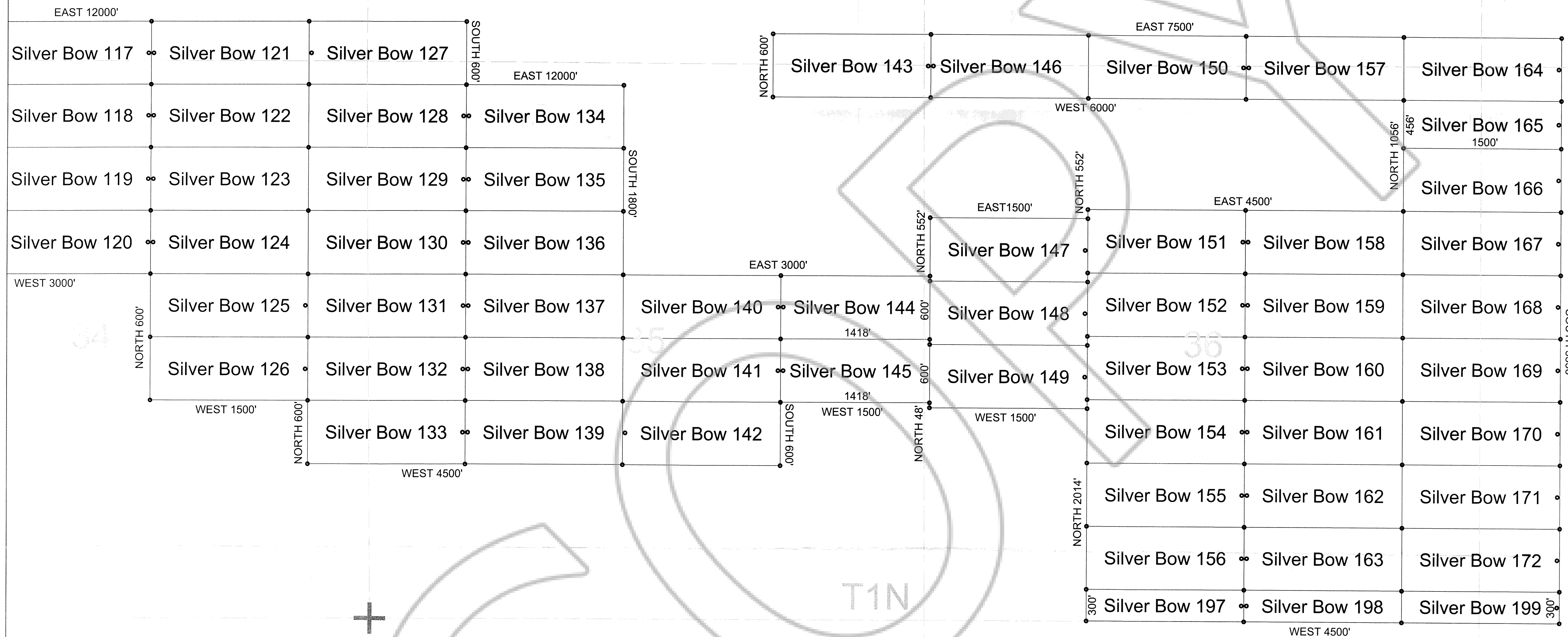
26

25

30

R49E
R50E

THE NE CORNER OF SILVER BOW 164
LIES 5558 FEET NORTH AND 11323 FEET
EAST FROM THE SW CORNER OF
SECTION 35, T1N, R49E, MDBM.



Sheet 2 of 2

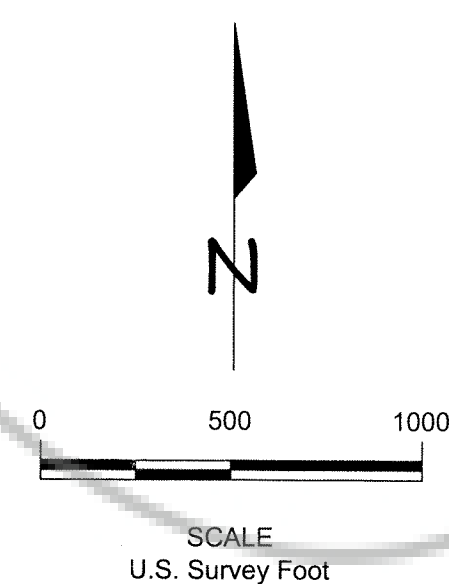
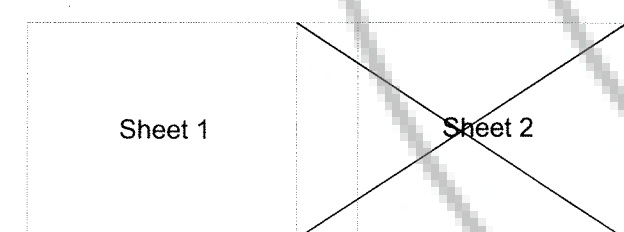
SILVER BOW LODE MINING CLAIMS

CLAIM MAP
T2N, R49&50E, MDBM
LINCOLN COUNTY NEVADA

AURION RESOURCES (US) LLC
2711 Centerville Road, Suite 400
WILMINGTON, DELAWARE 19808

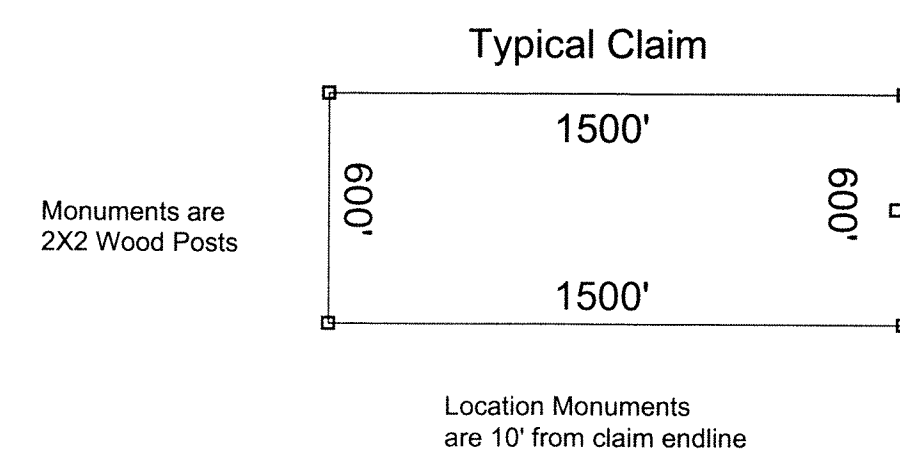
Drawn By: RBL Date: October 2012
AutoCad 2010 Drawing File: SILVER BOW Claims Local.DWG

Survey and Map by:
LYMAN EXPLORATION & SURVEYING OUTFIT
612 West 1635 North, Suite 101, Clinton, UT 84015
(801) 540-0317



EXPLANATION

- Found PLS Monument
- Projected Section Lines
- Lode Mining Claim Monument
- Adjoining Mining Claim



LOCATION DATES:

- SILVER BOW 176-191,193-196 October 28, 2012
- SILVER BOW 150,157,164-172,199 October 29,2012
- SILVER BOW 143,146-149,151-156,158-163,197,198 October 30, 2012
- SILVER BOW 116-142,144,145 October 31, 2012
- SILVER BOW 101-115,173-175,192 November 1, 2012

SILVER BOW CLAIMS ARE TIED
TO THE SW CORNER OF
SECTION 35, T1N, R49E, MDBM.