

DOC # 0142403

12/26/2012 02:54 PM

Official Record

Recording requested By
GRE INC.

Lincoln County - NV

Leslie Boucher - Recorder

Fee: \$19.00

Page 1 of 1

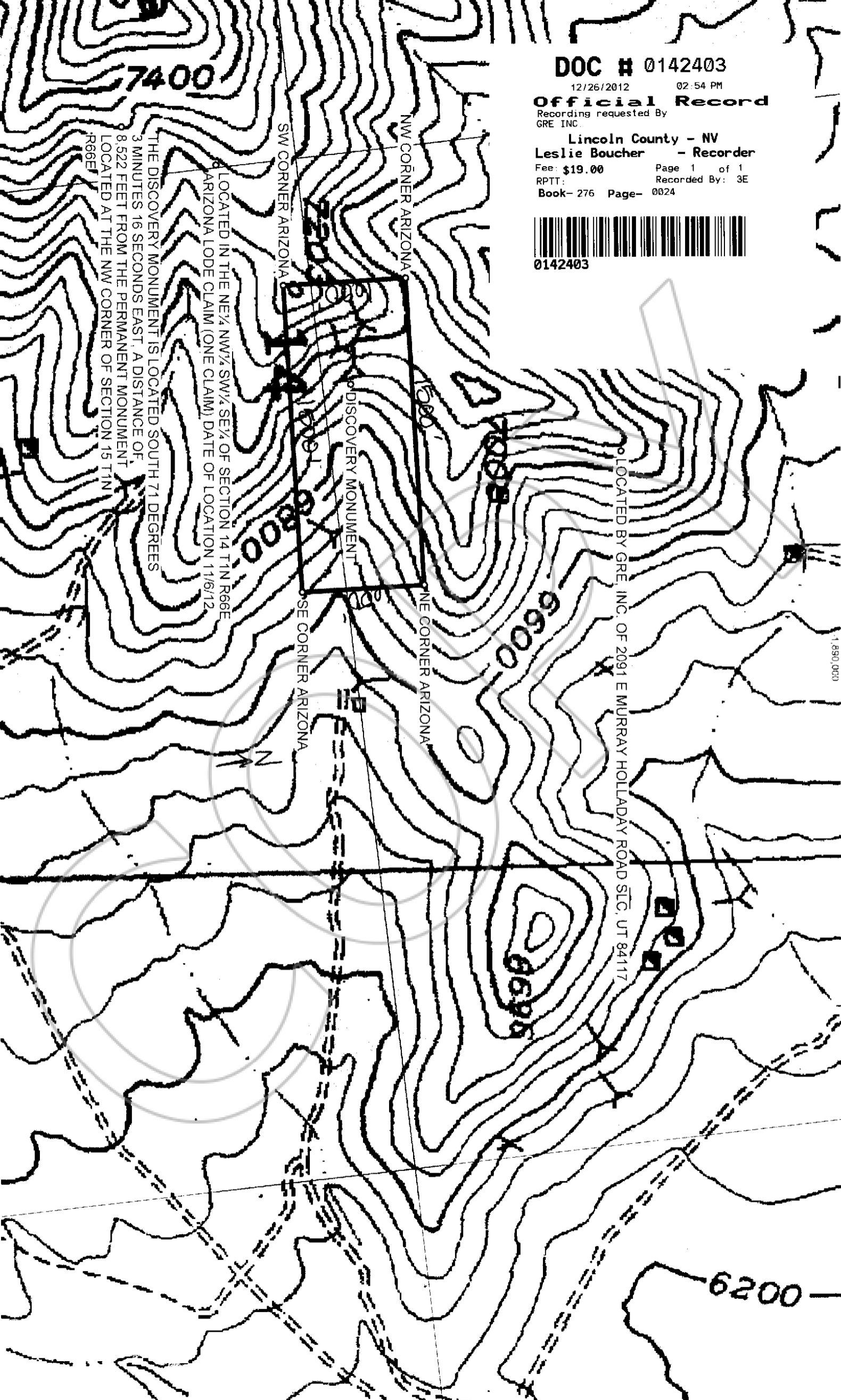
RPTT:

Recorded By: 3E

Book- 276 Page- 0024



0142403



THE DISCOVERY MONUMENT IS LOCATED SOUTH 71 DEGREES
3 MINUTES 16 SECONDS EAST, A DISTANCE OF
8,522 FEET FROM THE PERMANENT MONUMENT
LOCATED AT THE NW CORNER OF SECTION 15 T1N
R66E

LOCATED IN THE NE 1/4 NW 1/4 SW 1/4 SE 1/4 OF SECTION 14 T1N R66E
ARIZONA LODE CLAIM (ONE CLAIM) DATE OF LOCATION 11/6/12

LOCATED BY GRE, INC. OF 2091 E MURRAY HOLLADAY ROAD SIC, UT 84117

1,890,000