

DOC # 0142401

12/26/2012 02:52 PM

Official Record

Recording requested by  
GRE INC

Lincoln County - NV  
Leslie Boucher - Recorder

Fee: \$19.00

Page 1 of 1

RPTT:

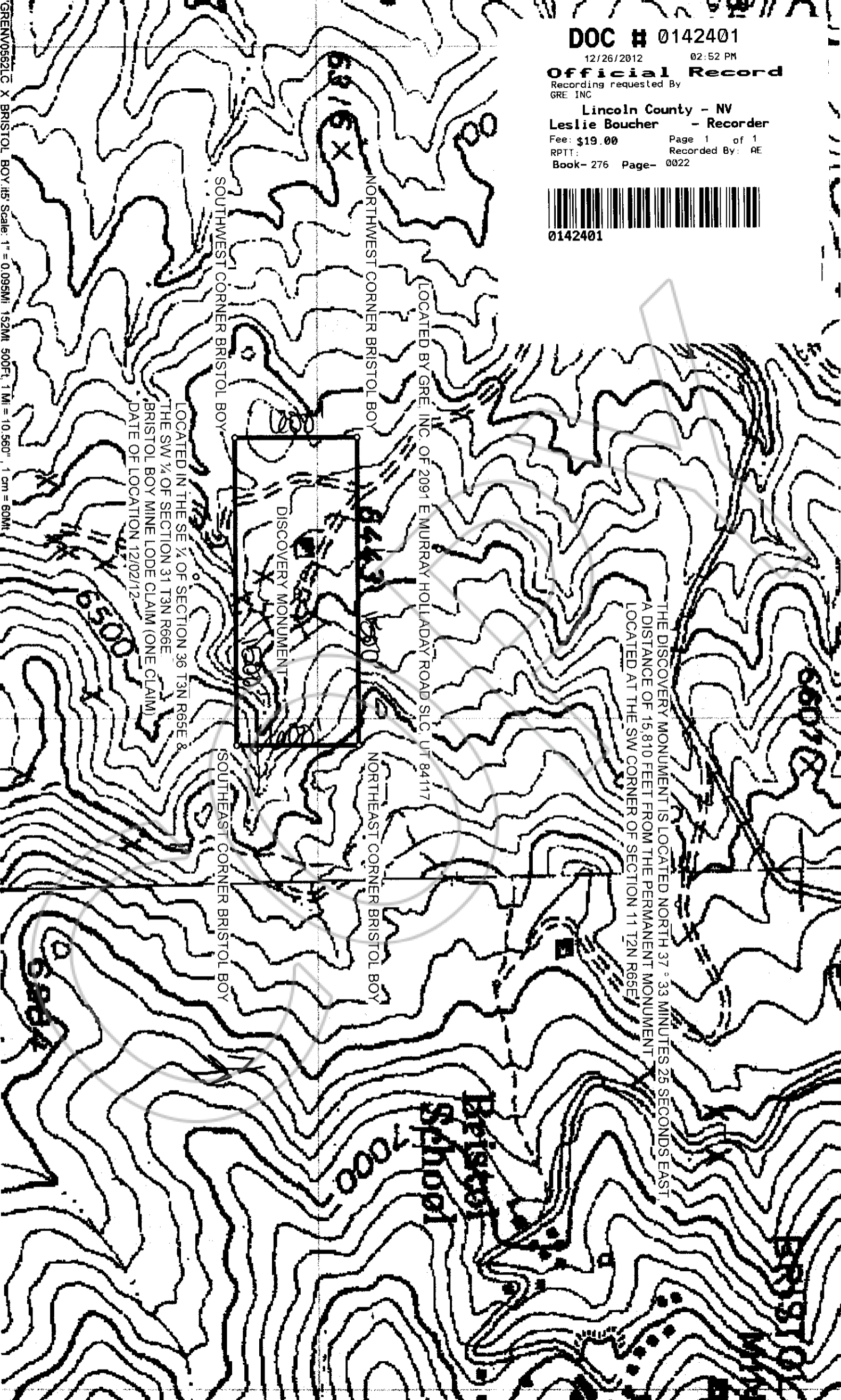
Recorded By: AE

Book- 276 Page- 0022



0142401

GRENV05621C\_X BRISTOL\_BOY.i65 Scale: 1" = 0.095MI 152MI 500FT 1MI = 10,560' 1cm = 60MM



LOCATED BY GRE, INC. OF 2091 E MURRAY HOLLADAY ROAD SLC, UT 84117

SOUTHWEST CORNER BRISTOL BOY

NORTHWEST CORNER BRISTOL BOY

NORTHEAST CORNER BRISTOL BOY

SOUTHEAST CORNER BRISTOL BOY

DISCOVERY MONUMENT

LOCATED IN THE SE 1/4 OF SECTION 36 T3N R65E &  
THE SW 1/4 OF SECTION 31 T3N R66E  
BRISTOL BOY MINE LODE CLAIM (ONE CLAIM)  
DATE OF LOCATION 12/02/12

THE DISCOVERY MONUMENT IS LOCATED NORTH 37° 33 MINUTES 25 SECONDS EAST  
A DISTANCE OF 15,810 FEET FROM THE PERMANENT MONUMENT  
LOCATED AT THE SW CORNER OF SECTION 11 T2N R65E

Bristol School

9500

1000

6600

6800

5930