

DOC # 0142395

12/26/2012 02:46 PM

Official Record

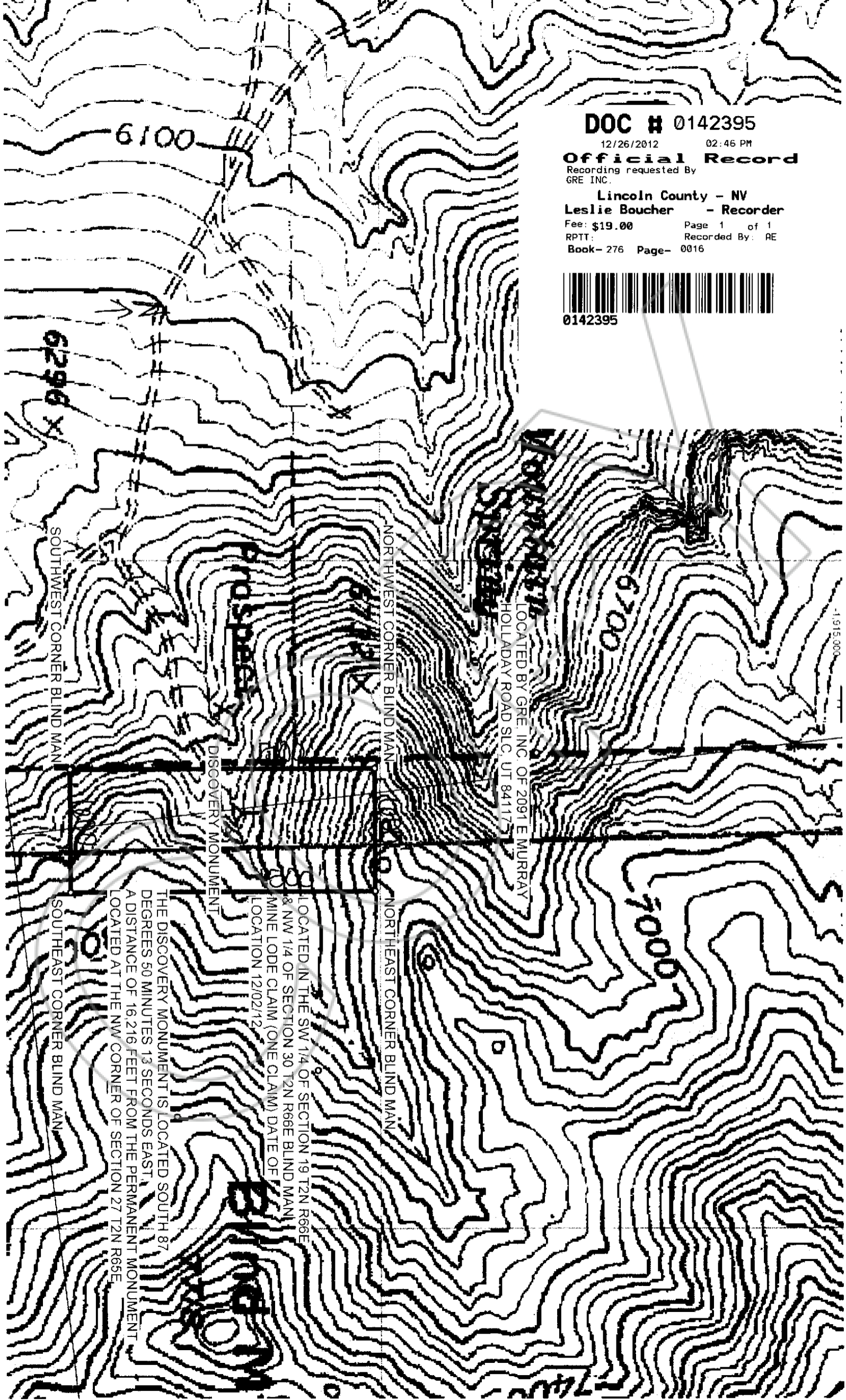
Recording requested By
GRE INC.

Lincoln County - NV
Leslie Boucher - Recorder

Fee: \$19.00 Page 1 of 1
RPTT: Recorded By: AE
Book- 276 Page- 0016



0142395



LOCATED BY GRE, INC. OF 2091 E MURRAY
HOLLADAY ROAD SLC, UT 84117

LOCATED IN THE SW 1/4 OF SECTION 19 T2N R66E
& NW 1/4 OF SECTION 30 T2N R66E BLIND MAN
MINE LODE CLAIM (ONE CLAIM) DATE OF
LOCATION 12/02/12

THE DISCOVERY MONUMENT IS LOCATED SOUTH 87
DEGREES 50 MINUTES 13 SECONDS EAST
A DISTANCE OF 16 216 FEET FROM THE PERMANENT MONUMENT
LOCATED AT THE NW CORNER OF SECTION 27 T2N R65E

1:915,000