

DOC # 0142367

12/20/2012

04:48 PM

Official Record

Recording requested By

GRE INC.

Lincoln County - NV

Recorder

Leslie Boucher

Fee: \$19.00

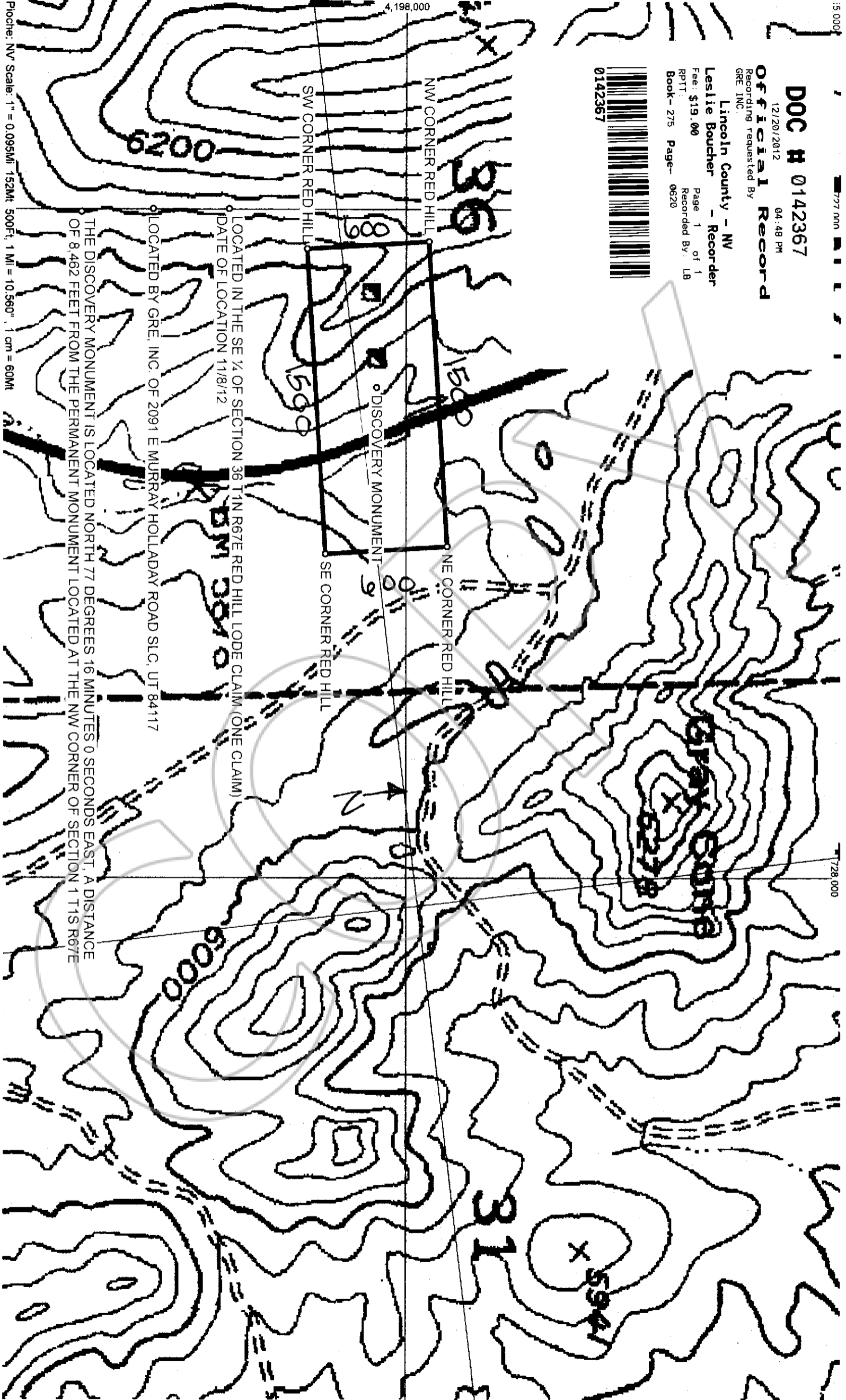
Page 1 of 1

RPT# Book- 275 Page- 0620

Recorded By: LB



0142367



4,198,000

6200

3500

3000

1500

1500

3000

2500

5000

3100

5500

LOCATED IN THE SE ¼ OF SECTION 36 T1N R67E RED HILL LODGE CLAIM (ONE CLAIM)  
 DATE OF LOCATION 11/8/12

LOCATED BY GRE, INC. OF 2091 E MURRAY HOLLADAY ROAD SLC, UT 84117

THE DISCOVERY MONUMENT IS LOCATED NORTH 77 DEGREES 16 MINUTES 0 SECONDS EAST A DISTANCE OF 8,462 FEET FROM THE PERMANENT MONUMENT LOCATED AT THE NW CORNER OF SECTION 1 T1S R67E