

DOC # 0142357

12/20/2012 04:31 PM

Official Record
Recording requested by
GRE INC.

Lincoln County - NV

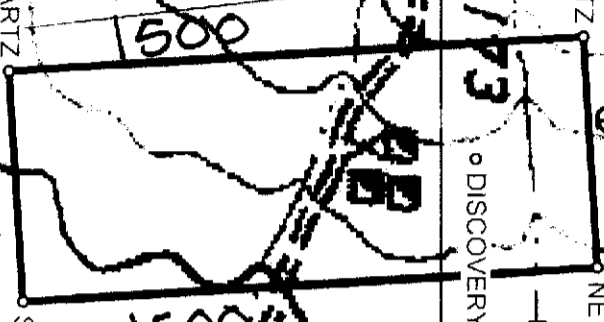
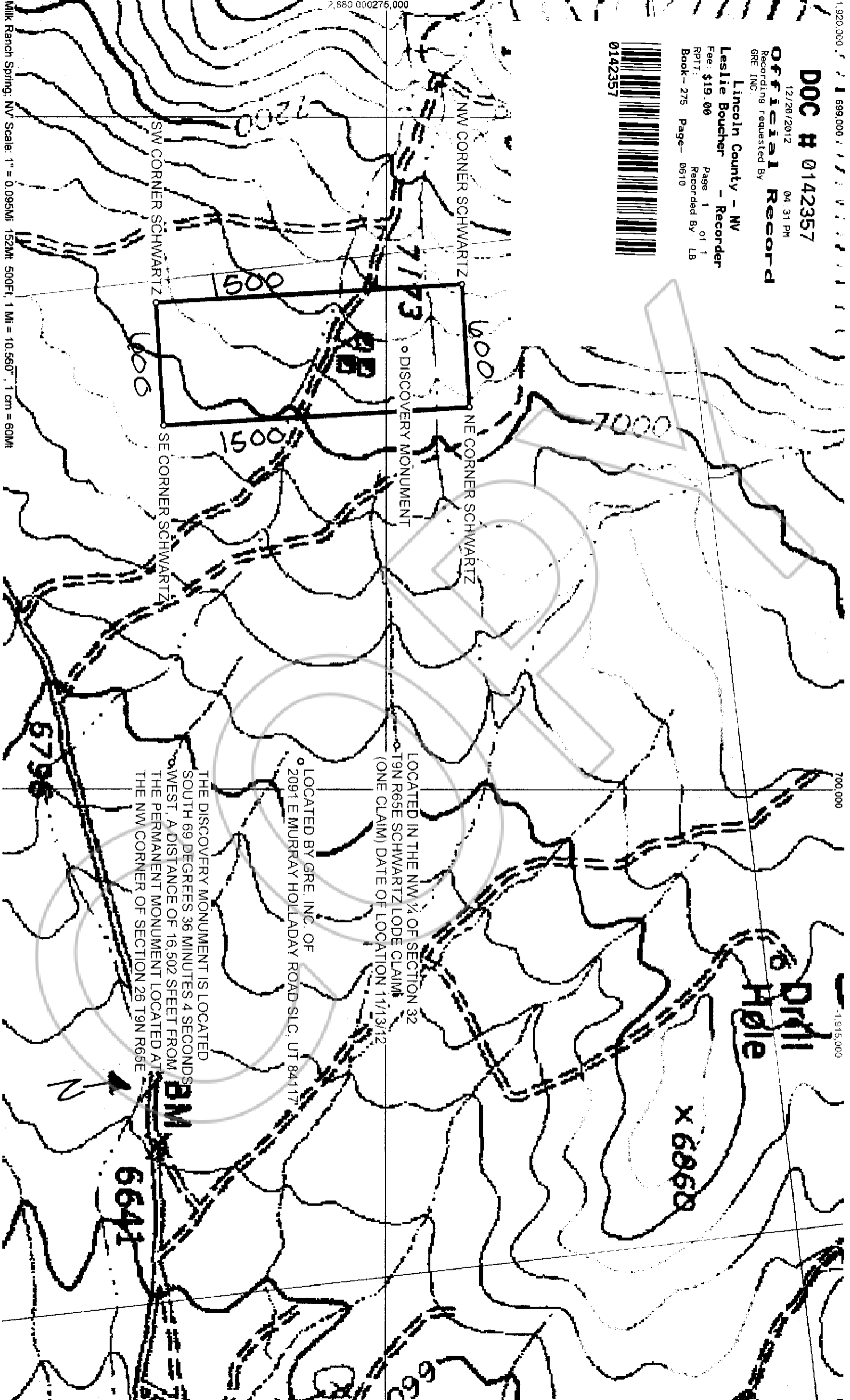
Leslie Boucher - Recorder

Fee: \$19.00 Page 1 of 1
RPT: Recorded By: LB
Book - 275 Page - 0610



2,880,000 2,750,000

Milk Ranch Springs, NV Scale: 1" = 0.095Mi, 152Mm, 500Ft, 1 Mi = 10,560", 1 cm = 60Mm



DISCOVERY MONUMENT

NW CORNER SCHWARTZ

NE CORNER SCHWARTZ

SE CORNER SCHWARTZ

LOCATED IN THE NW 1/4 OF SECTION 32
T9N R6SE SCHWARTZ LODGE CLAIM
(ONE CLAIM) DATE OF LOCATION 11/13/12

LOCATED BY GRE, INC. OF
2091 E MURRAY HOLLADAY ROAD SLC, UT 84117

THE DISCOVERY MONUMENT IS LOCATED
SOUTH 69 DEGREES 36 MINUTES 4 SECONDS
WEST, A DISTANCE OF 16,502 FEET FROM
THE PERMANENT MONUMENT LOCATED AT
THE NW CORNER OF SECTION 26 T9N R6SE

BM

6641

Drill Hole

X 6860

6796

666