

DOC # 0142341

12/20/2012 04:10 PM

Official Record

Recording requested By
GRE INC.

Lincoln County - NV

Leslie Boucher - Recorder

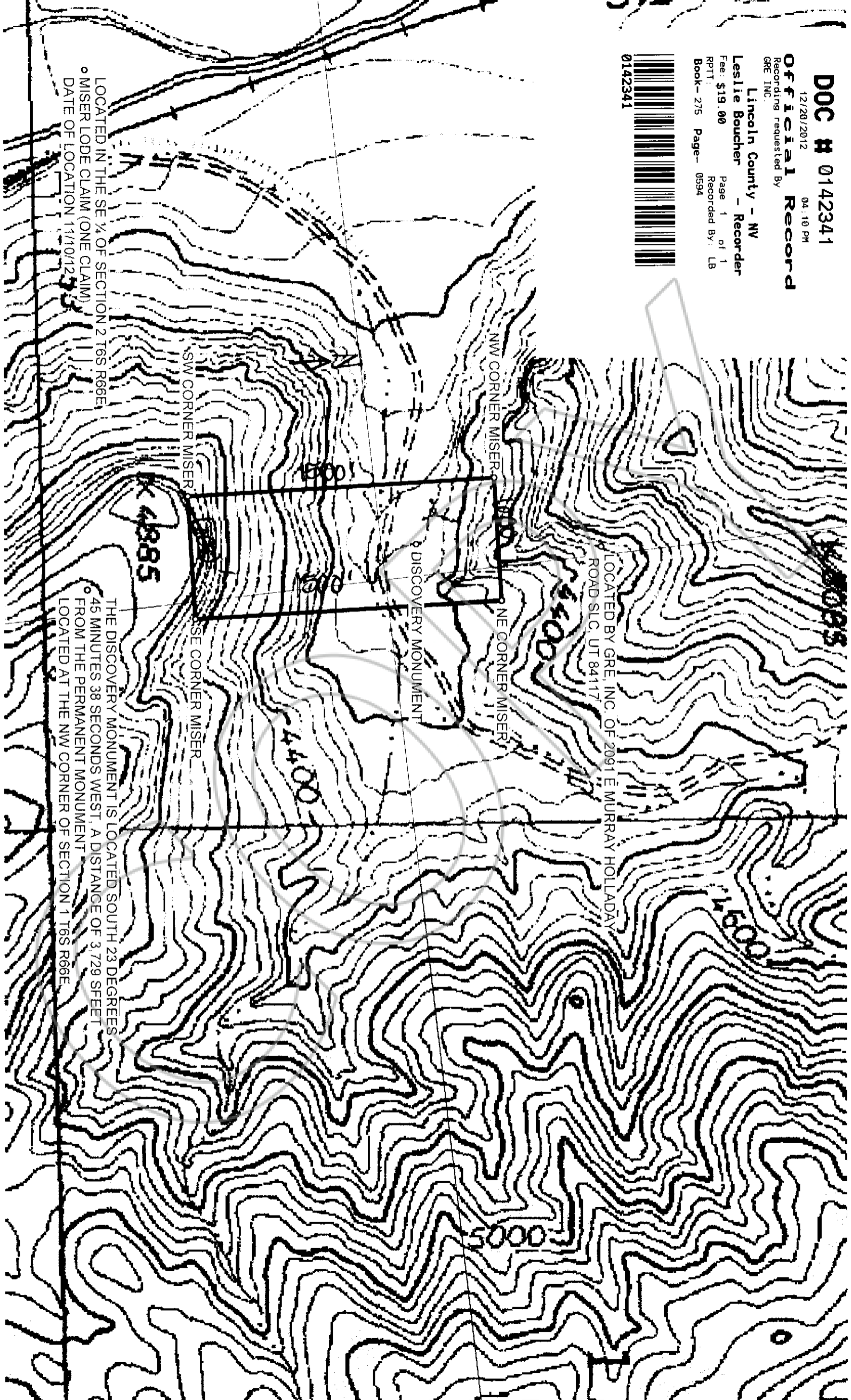
Fee: \$19.00 Page 1 of 1

RPT: Recorded By: LB

Book- 275 Page- 0594



0142341



LOCATED BY GRE, INC. OF 2091 E MURRAY HOLLADAY ROAD SLC, UT 84117

DISCOVERY MONUMENT

NW CORNER MISER

NE CORNER MISER

SW CORNER MISER

SE CORNER MISER

4885

4800

4900

4950

5000

LOCATED IN THE SE ¼ OF SECTION 2 T6S R66E
MISER LODGE CLAIM (ONE CLAIM)
DATE OF LOCATION 11/10/12

THE DISCOVERY MONUMENT IS LOCATED SOUTH 23 DEGREES
45 MINUTES 38 SECONDS WEST, A DISTANCE OF 3.729 SFEET
FROM THE PERMANENT MONUMENT
LOCATED AT THE NW CORNER OF SECTION 1 T6S R66E