

DOC # 0142339

12/20/2012 04:07 PM

Official Record  
Recording requested By  
GRE INC.

Lincoln County - NV  
Leslie Boucher - Recorder

Fee: \$19.00 Page 1 of 1  
RPT: Recorded By: LB  
Book- 275 Page- 0592

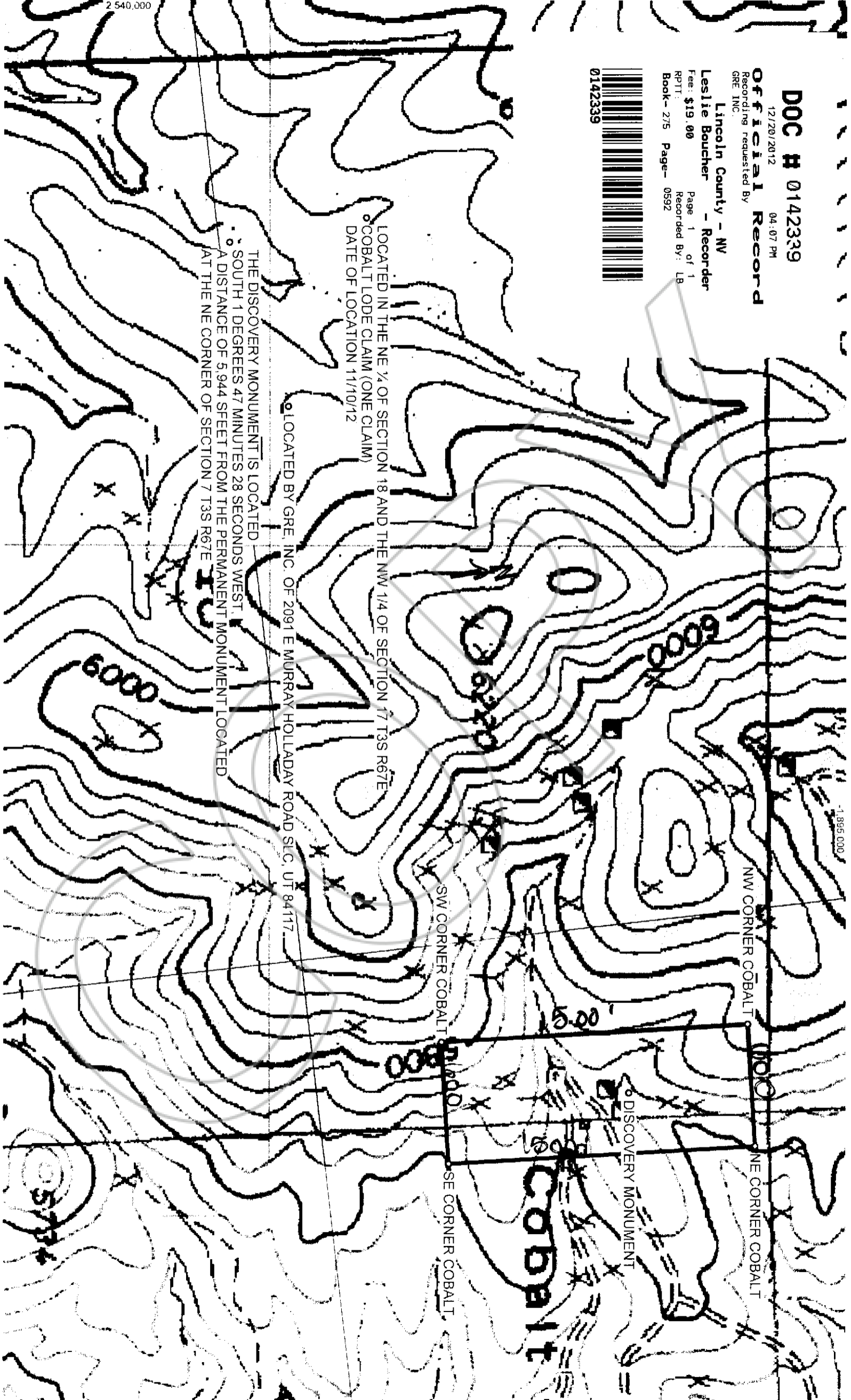


0142339

LOCATED IN THE NE 1/4 OF SECTION 18 AND THE NW 1/4 OF SECTION 17 T3S R67E  
COBALT LODGE CLAIM (ONE CLAIM)  
DATE OF LOCATION 11/10/12

LOCATED BY GRE, INC. OF 2091 E MURRAY HOLLADAY ROAD SEC. UT 84117

THE DISCOVERY MONUMENT IS LOCATED  
SOUTH 1 DEGREES 47 MINUTES 28 SECONDS WEST  
A DISTANCE OF 5,944 FEET FROM THE PERMANENT MONUMENT LOCATED  
AT THE NE CORNER OF SECTION 7 T3S R67E



2 540,000

1,895,000

NW CORNER COBALT

NE CORNER COBALT

SW CORNER COBALT

SE CORNER COBALT

DISCOVERY MONUMENT

COBALT

6000

6000

500

500

500