

DOC # 0142337

12/20/2012

04:02 PM

Official Record

Recording requested by
GRE INC.

Lincoln County - NW

Leslie Boucher - Recorder

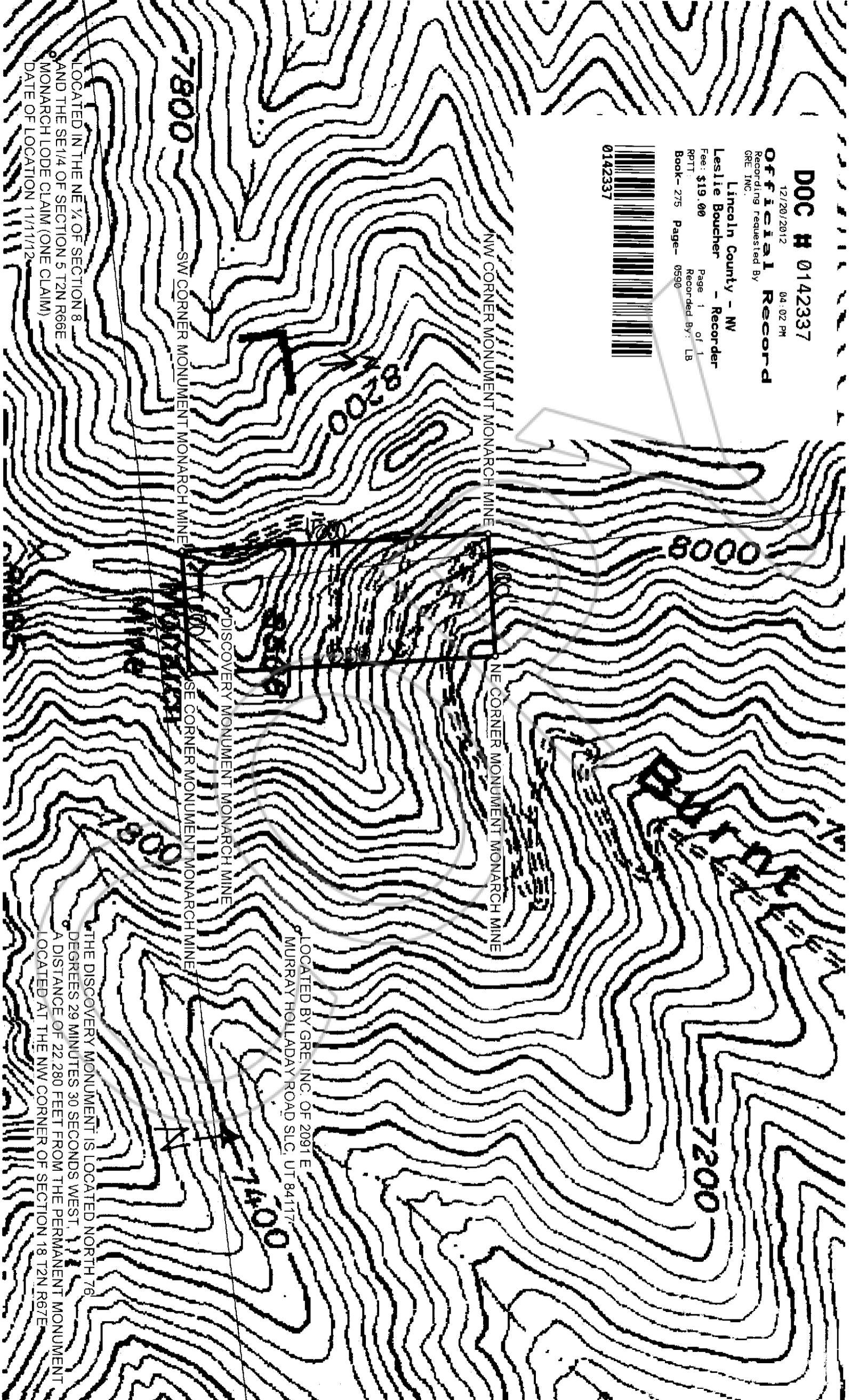
Fee: \$19.00 Page 1 of 1

RPT: Recorded By: LB

Book- 275 Page- 0590



0142337



NW CORNER MONUMENT MONARCH MINE

NE CORNER MONUMENT MONARCH MINE

SW CORNER MONUMENT MONARCH MINE

DISCOVERY MONUMENT MONARCH MINE

SE CORNER MONUMENT MONARCH MINE

LOCATED BY GRE, INC. OF 2091 E
MURRAY HOLLADAY ROAD SLC, UT 84117

LOCATED IN THE NE 1/4 OF SECTION 8
AND THE SE 1/4 OF SECTION 5 T2N R66E
MONARCH LODE CLAIM (ONE CLAIM)
DATE OF LOCATION 11/11/12

THE DISCOVERY MONUMENT IS LOCATED NORTH 76
DEGREES 29 MINUTES 30 SECONDS WEST
A DISTANCE OF 22 280 FEET FROM THE PERMANENT MONUMENT
LOCATED AT THE NW CORNER OF SECTION 18 T2N R67E

7800

8200

8000

7200

7600

7400