

DOC # 0142316

12/17/2012

01:58 PM

Official Record

Recording requested By
GRE INC.

Lincoln County - NV

Leslie Boucher - Recorder

Fee: \$19.00

Page 1 of 1

RPTT:

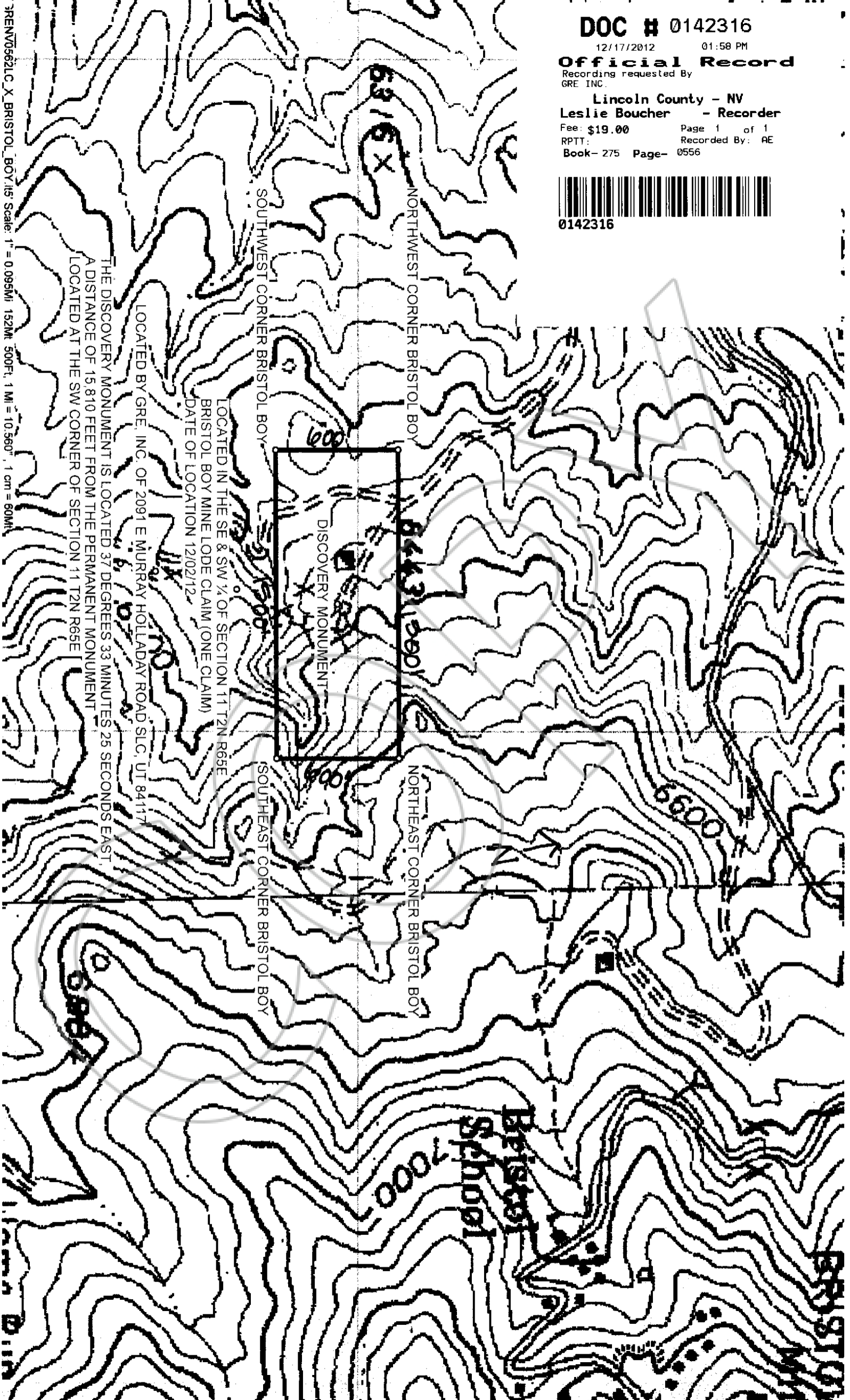
Recorded By: AE

Book- 275 Page- 0556



0142316

RENV0562LC_X BRISTOL_BOY.iis Scale: 1" = 0.095Mi 152M 500Ft. 1 Mi = 10.560' 1 cm = 80Mm



SOUTHWEST CORNER BRISTOL BOY

NORTHWEST CORNER BRISTOL BOY

SOUTHEAST CORNER BRISTOL BOY

NORTHEAST CORNER BRISTOL BOY

DISCOVERY MONUMENT

LOCATED BY GRE, INC. OF 2091 E MURRAY HOLLADAY ROAD SLC, UT 84117

LOCATED IN THE SE & SW 1/4 OF SECTION 11 T2N R65E
BRISTOL BOY MINE LODE CLAIM (ONE CLAIM)
DATE OF LOCATION 12/02/12

THE DISCOVERY MONUMENT IS LOCATED 37 DEGREES 33 MINUTES 25 SECONDS EAST
A DISTANCE OF 15 810 FEET FROM THE PERMANENT MONUMENT
LOCATED AT THE SW CORNER OF SECTION 11 T2N R65E

BRISTOL
SCHOOL

7000

6600

600

6431501

6800

BRISTOL