

DOC # 0142310

12/17/2012

01:52 PM

Official Record

Recording requested By
GRE INC.

Lincoln County - NV
Leslie Boucher - Recorder

Fee: \$19.00

Page 1 of 1

RPTT:

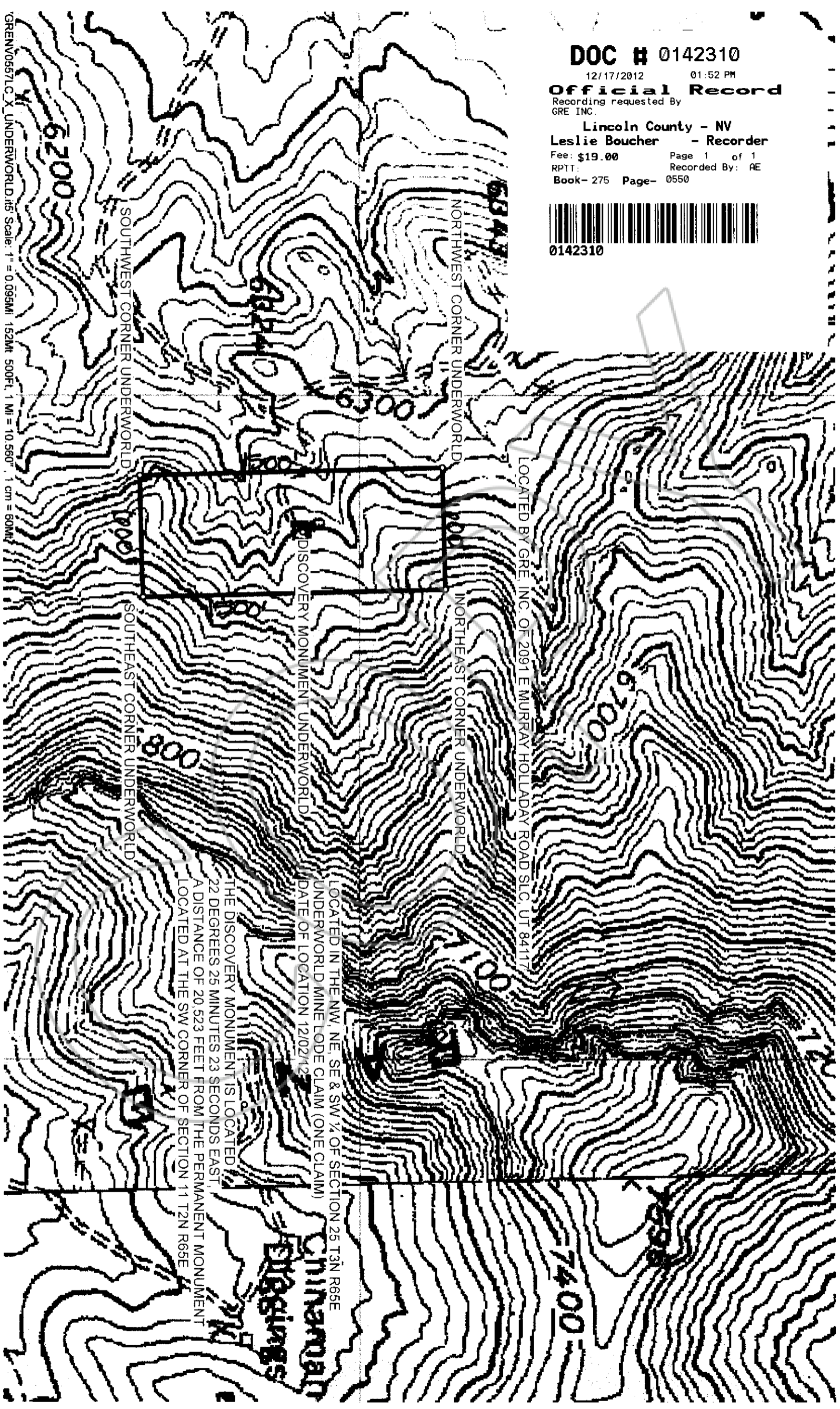
Recorded By: AE

Book- 275 Page- 0550



0142310

GRENV0557LCX UNDERWORLD.rst Scale: 1" = 0.095MI 152M; 500Ft, 1 MI = 10,560' 1 cm = 60MM



SOUTHWEST CORNER UNDERWORLD

NORTHWEST CORNER UNDERWORLD

SOUTHEAST CORNER UNDERWORLD

NORTHEAST CORNER UNDERWORLD

DISCOVERY MONUMENT UNDERWORLD

LOCATED BY GRE INC. OF 2091 E MURRAY HOLLADAY ROAD SLC, UT 84117

THE DISCOVERY MONUMENT IS LOCATED
22 DEGREES 25 MINUTES 23 SECONDS EAST
A DISTANCE OF 20,523 FEET FROM THE PERMANENT MONUMENT
LOCATED AT THE SW CORNER OF SECTION 11 T2N R65E
LOCATED IN THE NW, NE, SE & SW 1/4 OF SECTION 25 T3N R65E
UNDERWORLD MINE LODE CLAIM (ONE CLAIM)
DATE OF LOCATION 12/02/12

CHINAROOT
EIRGINGS