

R70E MDB&M

R71E MDB&M

31

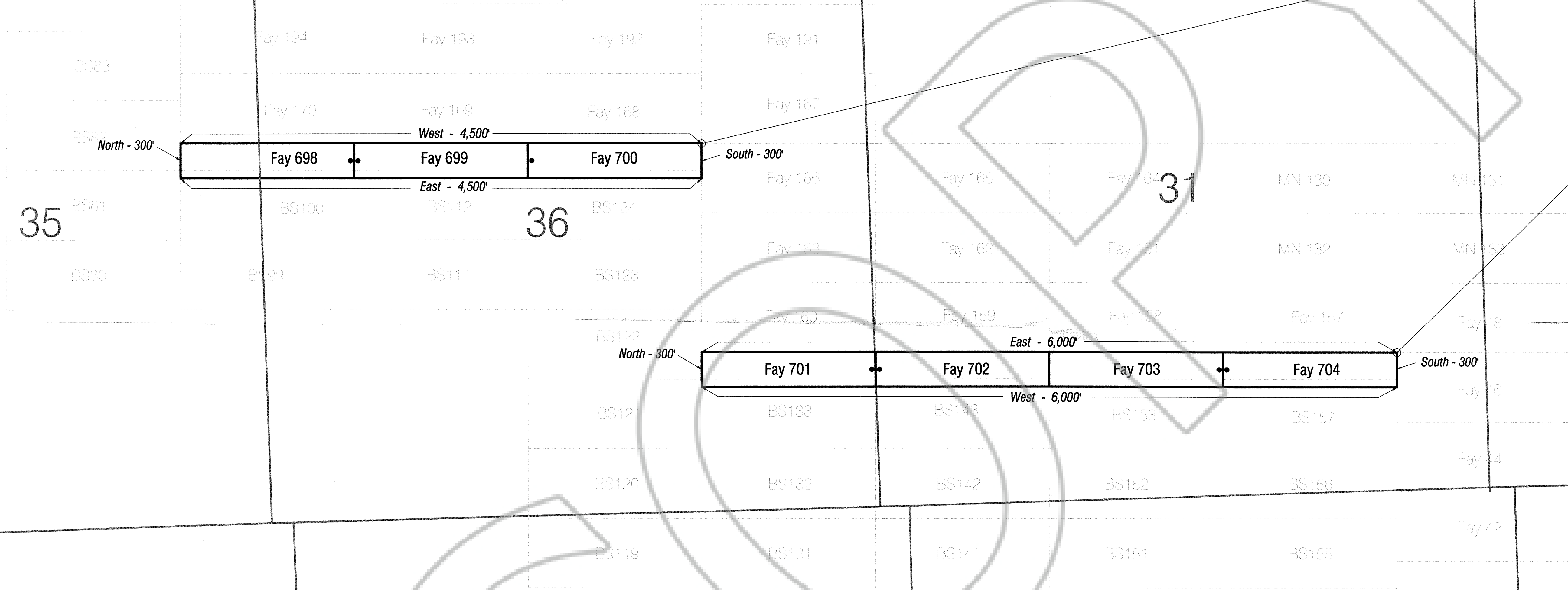
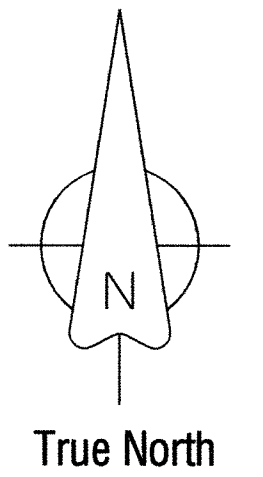
30

29 (Found Section Corner)
SE Corner
Sec. 29
T1N-R71E
MDB&M
(Nevada)

32

10,626.86 ft @ 256.68° Azim.

6,071.68 ft @ 225.72° Azim.



T
1
N

T
1
S

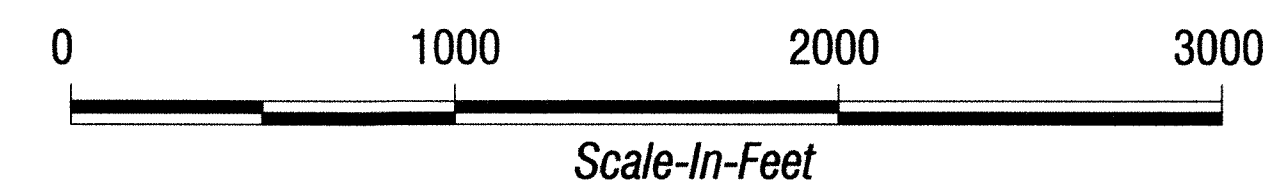
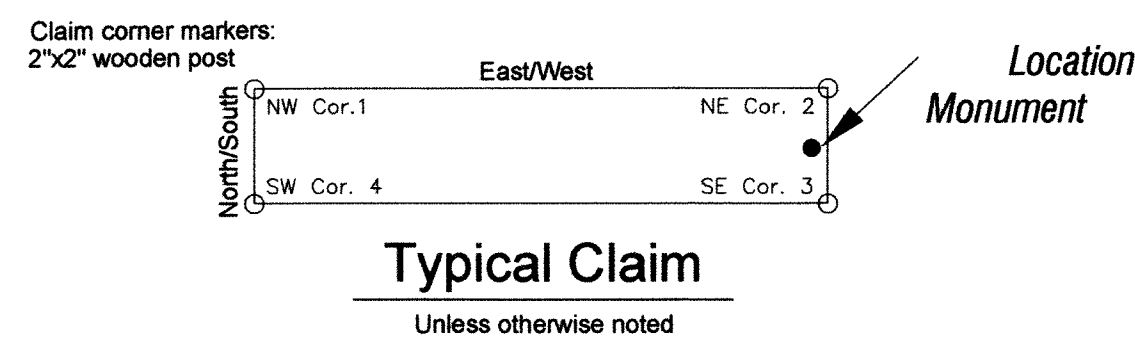
1
(Unsur.)

R71E MDB&M

Location Dates:
Fay 698 - 704 located on 2nd day of September, 2012.

Locator:
Nevada High Desert Gold, LLC
2696 S. Colorado Blvd.
Suite 240
Denver, Colorado 80222

DOC # 0142232
11/27/2012 03:28 PM
Official Record
Recorded & Indexed By:
NEVADA HIGH DESERT GOLD, LLC
Lincoln County - NV
Leslie Boucher - Recorder
File \$105.00 Page 1 of 1
SP11 Recorded By: LB
Book- 276 Page- 0338



HIGH DESERT High Desert Gold Corp. 2696 S. Colorado Blvd. Suite 240 Denver, Colorado 80222		Gold Springs Project FAY LODE CLAIMS Lincoln County, Nevada	
DRAWN BY:	DATE 11/16/12	PROJECT NO:	PROJECT: Gold Springs
GEOLOGY BY:	DATE	REV	A
LAST REVISION:	DATE		