

Official Record

Recording requested By
LENARD SMITH LAND SURVEY

Lincoln County - NV

Leslie Boucher - Recorder

Fee: \$14.00

Page 1 of 1

RPTT:

Recorded By AE

Book - D

Page -

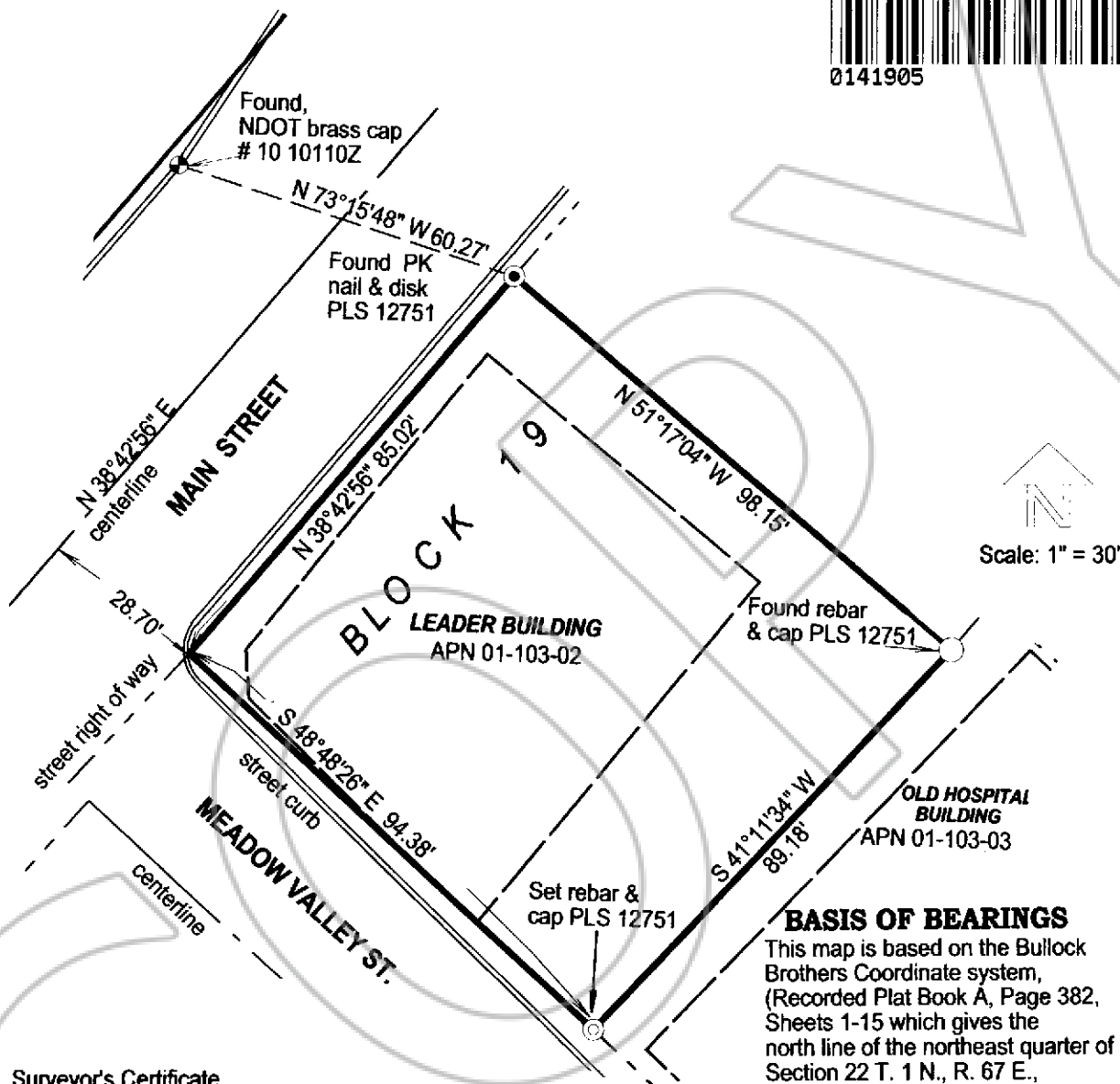
0066

CORNER RECORD

Prepared by Lenard Smith Land Survey
509 Main St., Caliente, NV. 89008



0141905



BASIS OF BEARINGS

This map is based on the Bullock Brothers Coordinate system, (Recorded Plat Book A, Page 382, Sheets 1-15 which gives the north line of the northeast quarter of Section 22 T. 1 N., R. 67 E., as the Basis of Bearings, shown as N 89°53'32" W.

Surveyor's Certificate

I, Lenard D. Smith, a Professional Land Surveyor registered in the State of Nevada, certify that:

1. This plat represents the results of a survey conducted under my supervision at the instance of Joe Rossi.
2. The land surveyed lies within Section 22, T. 1 N., R. 67 E, M.D.M., in the Town of Pioche, Lincoln County, Nevada and the survey was completed on August 14, 2012.
3. This plat complies with applicable statutes of this State and any local ordinances in effect on the date that the survey was completed and the survey was conducted in accordance with chapter 625 of the Nevada Administrative Code.
4. The monuments depicted on the plat are of the character shown, occupy the positions indicated and are of sufficient durability.

