

REFERENCE DOCUMENTS

- 1) RECORD OF SURVEY MAP BY CARL D. PETERSON, DATED 9-13-91 FOR THE NATIONAL MUSTANG ASSOCIATION AND RECORDED IN PLAT A, PAGE 355, LINCOLN COUNTY RECORDERS OFFICE.
- 2) 1901 GLO SURVEY OF T55, R69E, MDM BY DEPUTY SURVEYOR H.B. MAXSON
- 3) 1901 GLO SURVEY OF T55, R70E, MDM BY DEPUTY SURVEYOR H.B. MAXSON
- 4) GRANT, BARGAIN, SALE DEED AT LINCOLN COUNTY, DEED BOOK 3 PAGES 662 & 663
- 5) DECLARATION OF TAKING DEED AT LINCOLN COUNTY, BOOK P OF MISC. PAGES 214-216

NOTES:

- 1) THIS SURVEY WORK DONE WITH TRIMBLE R8 RTK GPS EQUIPMENT & USED LOCAL GROUND COORDINATES AT ELEVATION 5500'. LAT & LONG SHOWN AT SELECT CORNERS WERE DETERMINED BY NGS OPLS SOLUTION WITH REF FRAME IGS08 (EPOCH 2012.4721) USING CORS STATIONS DL8904 NNV5, A18817 ECHO & DM7135 NVP1.
- 2) THIS PROPERTY WAS PREVIOUSLY SURVEYED IN 1991 BY CARL D. PETERSON, FOR THE US GOVERNMENT TAKING. THIS SURVEY RE-TRADES THE 1991 PETERSON SURVEY AND IS BEST FIT TO THAT SURVEY AT MULTIPLE POINTS, BUT WITH THE SCALE SET AT 1.0.
- 3) BASIS OF BEARING IS N 00°07'15" E BEING THE SECTION LINE FROM THE SW CORNER TO THE NE CORNER OF SECTION 13, T55, R69E, MDM.
- 4) THESE SECTIONS WERE ORIGINALLY SURVEYED BY H.B. MAXSON IN 1901. AS A GENERAL RULE I FIND THE RELATIONSHIP OF THE FOUND STONES TO THE BEARING TREES (BT'S) IN CLOSE AGREEMENT WITH THE GLO RECORD, WITH THE CLARING EXCEPTION AT THE CORNER OF SECTIONS 13, 18, 19 & 24. SEE NOTE AT THAT CORNER. GLO ROCKS ARE NOT MARKED CONSISTENTLY AND I PRESUME THAT MAXSON MUST HAVE USED MORE THAN ONE MOUNDSMAN. MOST SECTION CORNERS HAVE GROVES BUT THE CORNER TO SECTION 13, 14, 23 & 24 HAS NOTCHES. MOST 1/4 CORNERS ARE THE CLASSIC CLOSED 1/4 BUT SOME ARE SCRIBED BACKWARDS AND SOME ARE AN OPEN INSTEAD OF CLOSED 4. SOME ROCKS ARE PLAINLY & CLEARLY MARKED AND SOME HAVE NO MARKS OR VERY FAINT MARKS. CORNER NOTES SHOWN WHAT WAS FOUND.
- 5) DISTANCE MEASUREMENTS TO BT'S BY GPS ARE APPROXIMATE ONLY DUE TO INTERFERENCE OF THE TREE TRUNK AND CANOPY AND ARE SHOWN TO VERIFY THE CURRENT STATUS OF THOSE GLO CORNER ACCESSORIES. GPS MEASURED BEARINGS ARE ROUNDED TO THE NEAREST 10 MINUTES.
- 6) PETERSON STATES ON HIS SURVEY THAT THE FENCE CORNER AT THE CORNERS OF SECTION 13 & 24 COULD BE A PERPETUATION OF THE ORIGINAL GLO ROCK CORNER. I AGREE AS THAT FENCE CORNER LOCATION IS CLOSER TO THE LOCATION THAT WOULD BE REESTABLISHED BY THE 1901 GLO TOPO THE OF 52 LINKS WEST FROM A NW TRENDING DRAW. I REJECT THE PETERSON PIN AND ACCEPT THE EXISTING FENCE CORNER. THIS SHIFTS THE CENTER 1/4 CORNER LOCATION OF SECTION 24 TO THE WEST AND THE LOCATION OF THE LINES FOR THE US GOVERNMENT TAKING. I REJECT THE PETERSON PINS AT THOSE LOCATIONS AND CALCULATE AND SET AS SHOWN.
- 7) THE PETERSON SURVEY CALCULATED THESE LOT CORNERS (1/16 CORNERS FOR THE SECTIONAL LOTS INCORRECTLY). HE HAS DRAWN A LINE DIRECT FROM THE WEST 1/16 CORNER ON THE NORTH & SOUTH SECTION LINES AND INTERSECTED THE CENTER 1/4 SECTION LINE. THE PROPER PROCEDURE IS TO PROPORTION FROM THE CENTER 1/4 TO THE WEST 1/4 BASED ON THE SECTIONAL LOTTING DISTANCES. I REJECT THE PETERSON PINS AND CALC AND SET THE 1/16 CORNERS AS SHOWN.
- 8) PETERSON EITHER DID NOT FIND THE 1/4 TO SECTIONS 18 & 19 OR MEASURED IT INCORRECTLY. THE DISTANCE FROM HIS MATHEMATICAL LOCATION TO THE FOUND ROCK LOCATION IS S 37°19' E 30.5'. AS A CONSEQUENCE HIS CALCULATED LOCATION OF THE WEST 1/16 CORNER TO SECTION 18 & 19 IS INCORRECT. I REJECT THE PETERSON REBAR & CALC AND SET AT THE CORRECT LOCATION.
- 9) NMA IS PREPARING TO FENCE THIS PROPERTY ON THEIR EXTERIOR BOUNDARY LINES AND SO NUMEROUS TEMPORARY POINTS ON LINE ARE SET AT THE LOCATION SHOWN. POINTS CONSIST OF A 60D SPIKE WITH 6" PINK FEATHER/WHISKER WITH LATH IN A MOUND OF STONE.
- 10) MOST FENCES ARE ANCIENT WITH WOOD POSTS AND BARB WIRE AND MOST ARE FENCES OF CONVEYANCE AND NOT INTENDED TO BE PROPERTY LINES. HOWEVER, THERE ARE SEVERAL NEW T POST AND BARB WIRE FENCES AND THEY ARE LABELED AS "NEW".

PROPERTY DESCRIPTIONS

SECTION 13, T55, R69E, MDM THE NORTH HALF OF THE SW 1/4	79.93 ACRES
THE SE 1/4 OF THE SW 1/4	39.85 ACRES
THE SW 1/4 OF THE SE 1/4	39.98 ACRES
THE SW 1/4 OF THE SW 1/4	39.85 ACRES
THE SE 1/4 OF THE SE 1/4	39.92 ACRES
SECTION 24, T55, R69E, MDM THE NE 1/4 (EXCEPTING US GOVERNMENT TAKING)	151.19 ACRES
SECTION 18, T55, R70E, MDM GOVERNMENT LOT 3	35.86 ACRES
GOVERNMENT LOT 4	35.84 ACRES
SECTION 19, T55, R70E, MDM GOVERNMENT LOT 2	35.93 ACRES
	36.01 ACRES
TOTAL	614.12 ACRES

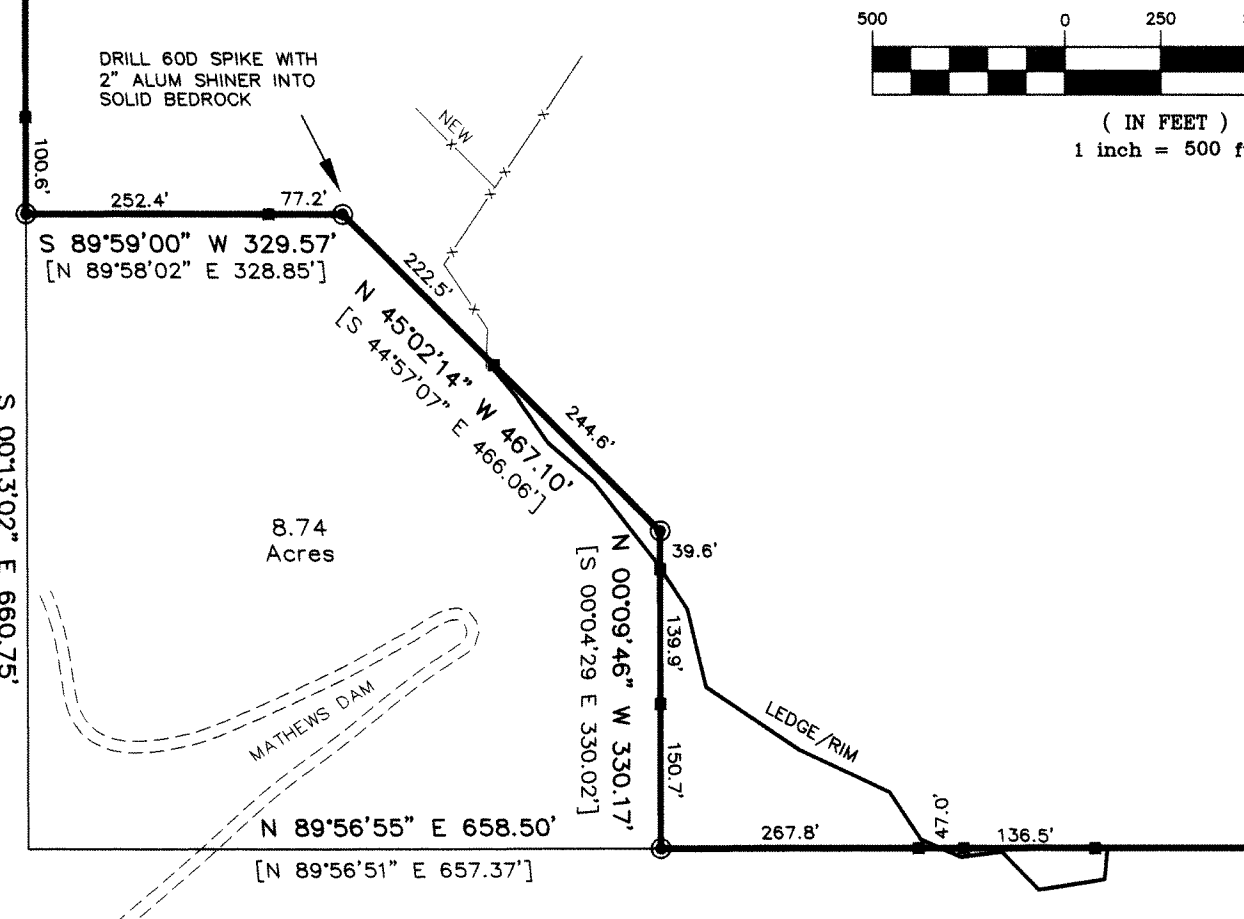
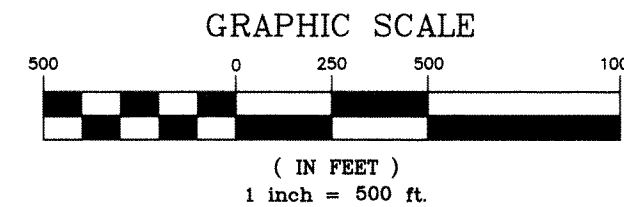
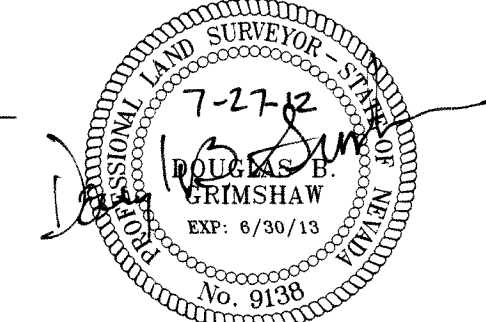
LEGEND

- SET 5/8" REBAR WITH BRASS CAP STAMPED GRIMSHAW PLS 9138 (EXCEPTIONS NOTED)
- FOUND SECTION OR 1/4 CORNER AS DESCRIBED
- SET NAIL & LATH IN ROCK MOUND FOR POINT ON LINE
- ANCIENT EXISTING FENCE LINE (UNLESS LISTED AS NEW)
- ===== SURVEYED NMA PROPERTY BOUNDARY LINE
- RANCH ACCESS ROAD
- SECTION SUBDIVISION LINE
- [] INDICATES PETERSON BEARING AND/OR DISTANCE
- () INDICATES GLO BEARING AND/OR DISTANCE

SURVEYOR'S CERTIFICATE

I, Douglas B. Grimshaw, a Professional Land Surveyor licensed in the State of Nevada certify that:
1) This map represents the results of a survey conducted by me at the instance of the National Mustang Association.
2) This property is located in Sections 13 & 24, T55, R69E & Sections 18 & 19, T55, R70E M.D.M., near Barclay, Lincoln County, Nevada, and was completed on July 27, 2012.
3) This plat complies with applicable statutes of this state and local ordinances in effect on the date that the survey was completed and the survey was conducted in accordance with Chapter 625 of the Nevada Administrative Code.
4) The monuments depicted on the plat are of the character shown, occupy the positions indicated, and are of sufficient number and durability.

Douglas B. Grimshaw
DOUGLAS B. GRIMSHAW, P.L.S.
NEVADA CERTIFICATE NO. 9138



DETAIL OF US GOVERNMENT TAKING

DESCRIPTION AT BOOK "P" OF MISC. PAGES 214-216
SCALE 1" = 200'

Record of Survey
for
National Mustang Association
located in
Sections 13 & 24, T55, R69E, MDM
Sections 18 & 19, T55, R70E, MDM
Barclay, Lincoln County, Nevada
PREPARED BY
Grimshaw Surveying, Inc.
546 East Midvalley Road
Enoch, Utah 84721
phone (435) 586-9130
DATE: 7/27/2012
SCALE: 1" = 500'
DRAWN BY: DOUG GRIMSHAW TGO: NMA NEVADA
TEXT LOCATION: \LAND PROJECTS\BARCLAY NEVADA\TEXT\NMA
FILE NAME: NATIONAL MUSTANG ASSOC PROJECT: BARCLAY NEVADA
DRAWING NAME: \PLANS\NMA BARCLAY NV\2012 ROS.DWG
COORDINATES: DATA\MP\COORDS\NMA NEVADA\2012*