

R70E MDB&M

11
(Unsur.)

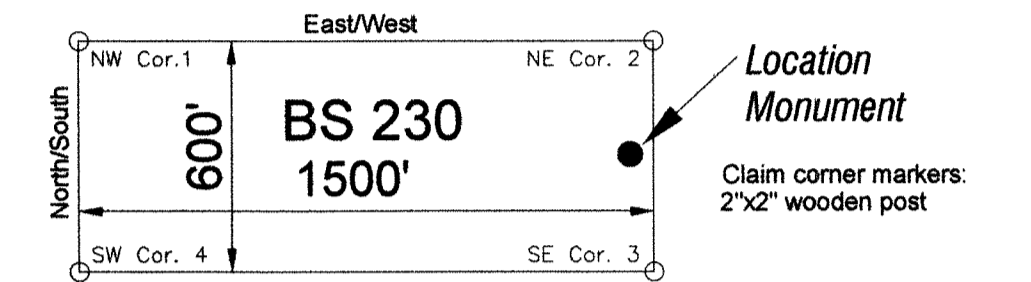
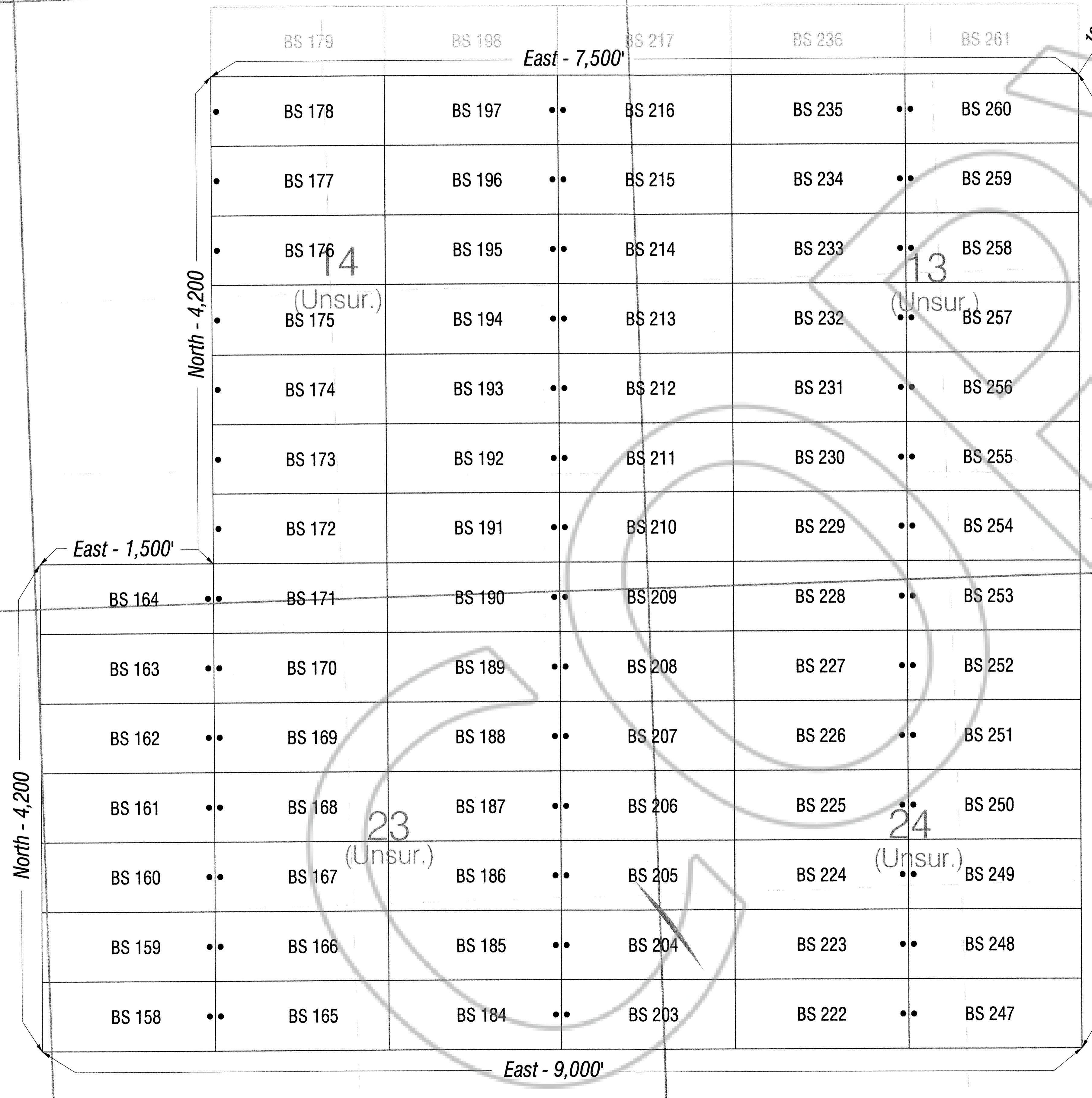
12
(Unsur.)

SW Corner
Sec. 6
T1S-R71E
MDB&M
(Found Section Corner)

15
(Unsur.)

T
1
S

22
(Unsur.)



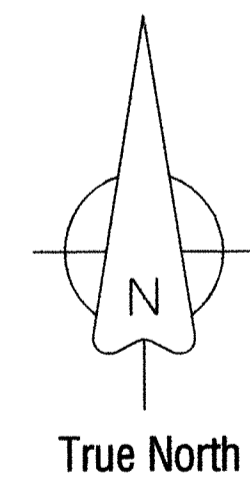
Typical Claim

Location Dates:

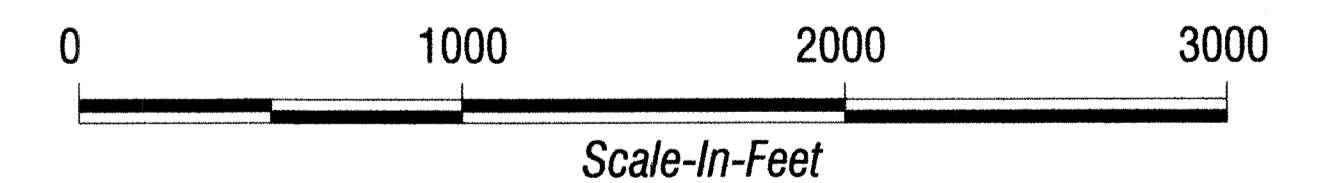
BS 158 - 178 located on January 10, 2012
BS 184 - 197 located on January 10, 2012
BS 203 - 216 located on January 10, 2012
BS 222 - 235 located on January 10, 2012
BS 247 - 260 located on January 10, 2012

Locator:

Nevada High Desert Gold, LLC
2696 S. Colorado Blvd.
Suite 240
Denver, Colorado 80222



DOC # 0140781
02/17/2012 04:05 PM
Official Record
Recording requested by:
NEVADA HIGH DESERT GOLD LLC
Lincoln County - NV
Leslie Boucher - Recorder
Fee: \$1,714.00 Page 1 of 2
RPT: Recorded By: LE
Book - 270 Page - 0115



<p>High Desert Gold Corp. 2696 S. Colorado Blvd. Suite 240 Denver, Colorado 80222</p>		<h2>Gold Springs Project</h2> <h3>BS Lode Mining Claims</h3> <p>Lincoln County, Nevada</p>	
DRAWN BY:	DATE	PROJECT NO.:	PROJECT:
	1/29/12		Gold Springs
GEOLOGY BY:	DATE	SCALE:	SHEET
	1/29/12	1"=500'	1 OF 2
LAST REVISION:	DATE	REVISION:	REV
Claims	1/29/12	MINING CLAIMS	A

3
(Unsur.)

2
(Unsur.)

R70E MDB&M

1
(Unsur.)

T
1
S

10
(Unsur.)

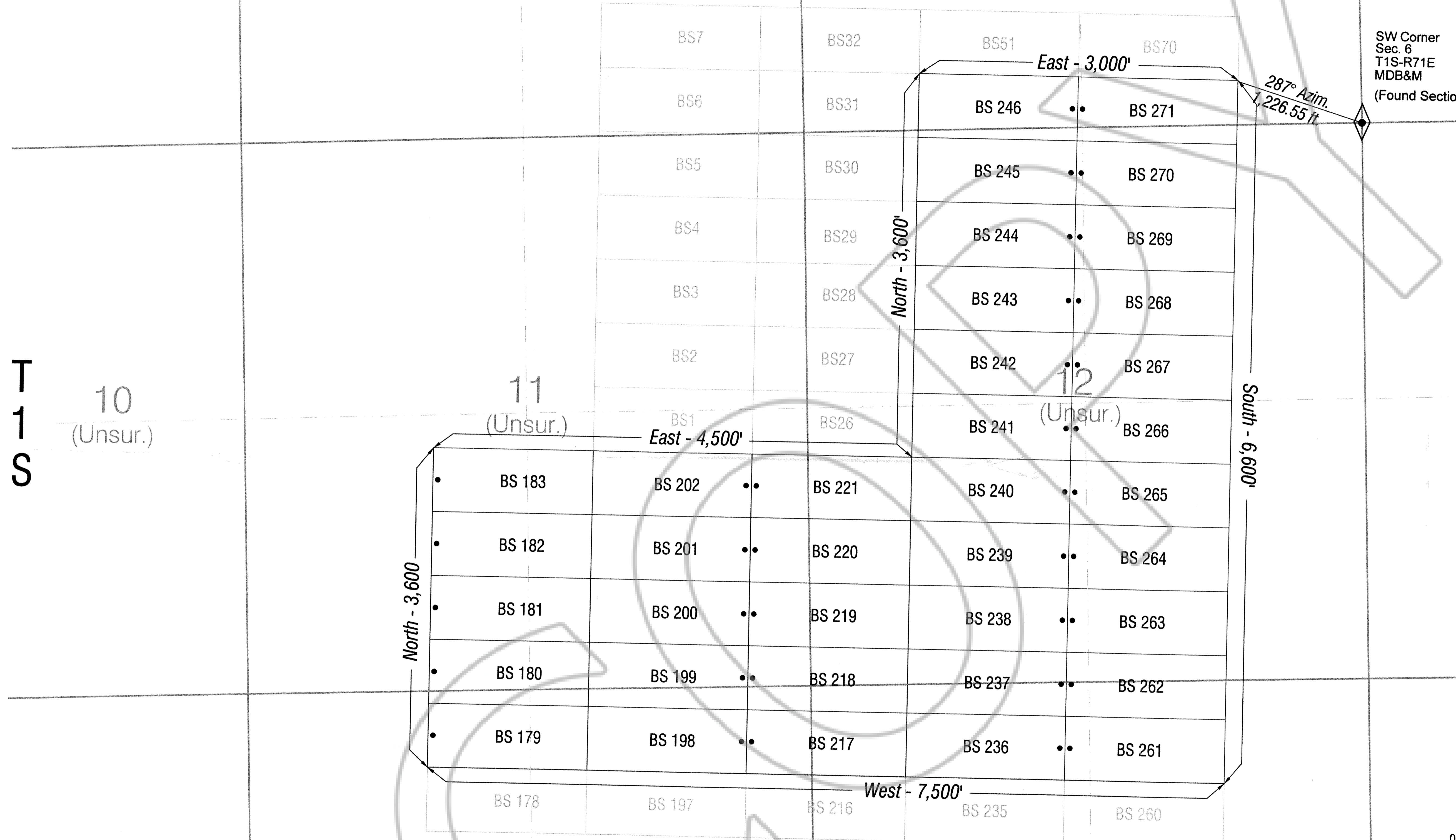
11
(Unsur.)

12
(Unsur.)

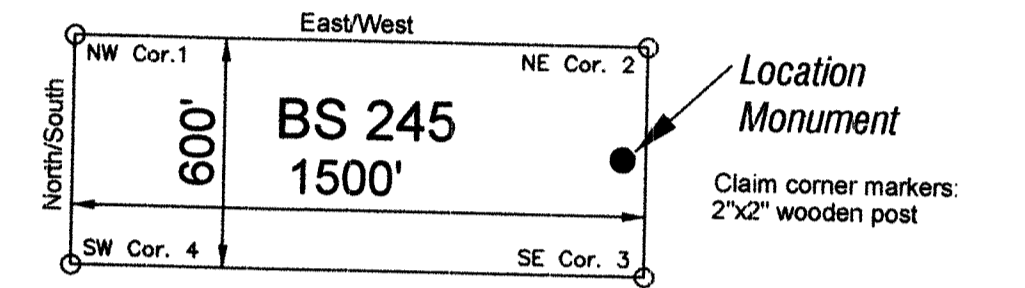
15
(Unsur.)

14
(Unsur.)

13
(Unsur.)



SW Corner
Sec. 6
T1S-R71E
MDB&M
(Found Section Corner)



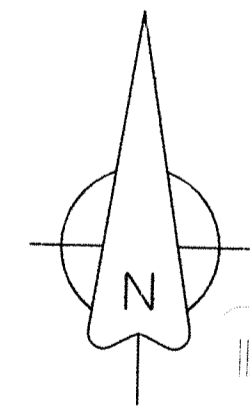
Typical Claim

Location Dates:

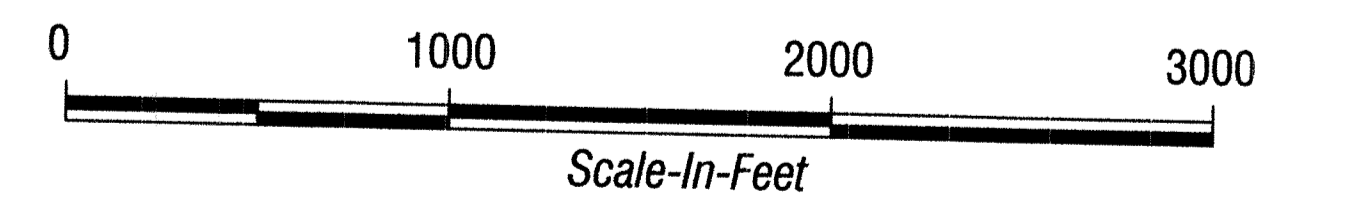
- BS 179 - 183 located on January 10, 2012
- BS 198 - 202 located on January 10, 2012
- BS 217 - 221 located on January 10, 2012
- BS 236 - 246 located on January 10, 2012
- BS 261 - 271 located on January 10, 2012

Locator:

Nevada High Desert Gold, LLC
2696 S. Colorado Blvd.
Suite 240
Denver, Colorado 80222



True North



		<h2>Gold Springs Project</h2> <h3>BS Lode Mining Claims</h3> <p>Lincoln County, Nevada</p>	
High Desert Gold Corp. 2696 S. Colorado Blvd. Suite 240 Denver, Colorado 80222			
DRAWN BY:	DATE	PROJECT NO:	PROJECT:
GEOLOGY BY:	1/29/12		Gold Springs
LAST REVISION:	DATE	SCALE:	REV
Claims	1/29/12	1"=500'	A
SHEET 2 OF 2		MINING CLAIMS	

0140781 Book 276 02/17/2012
Page 116 Page 1 of 2