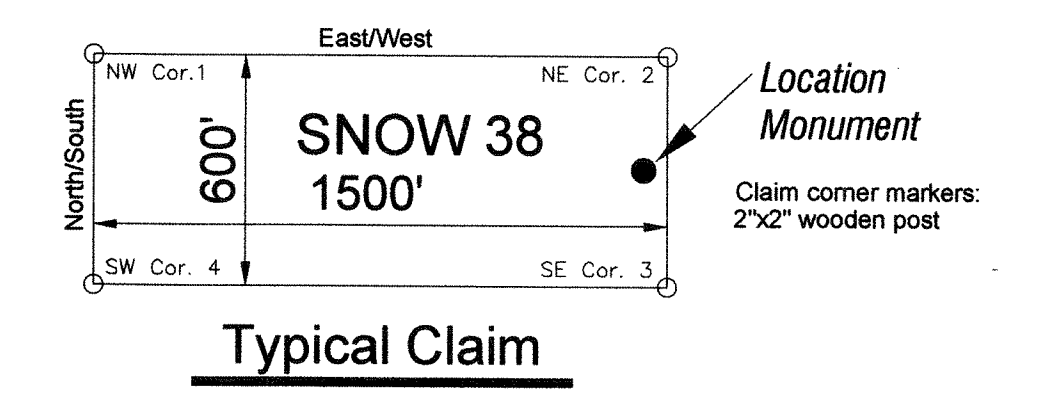
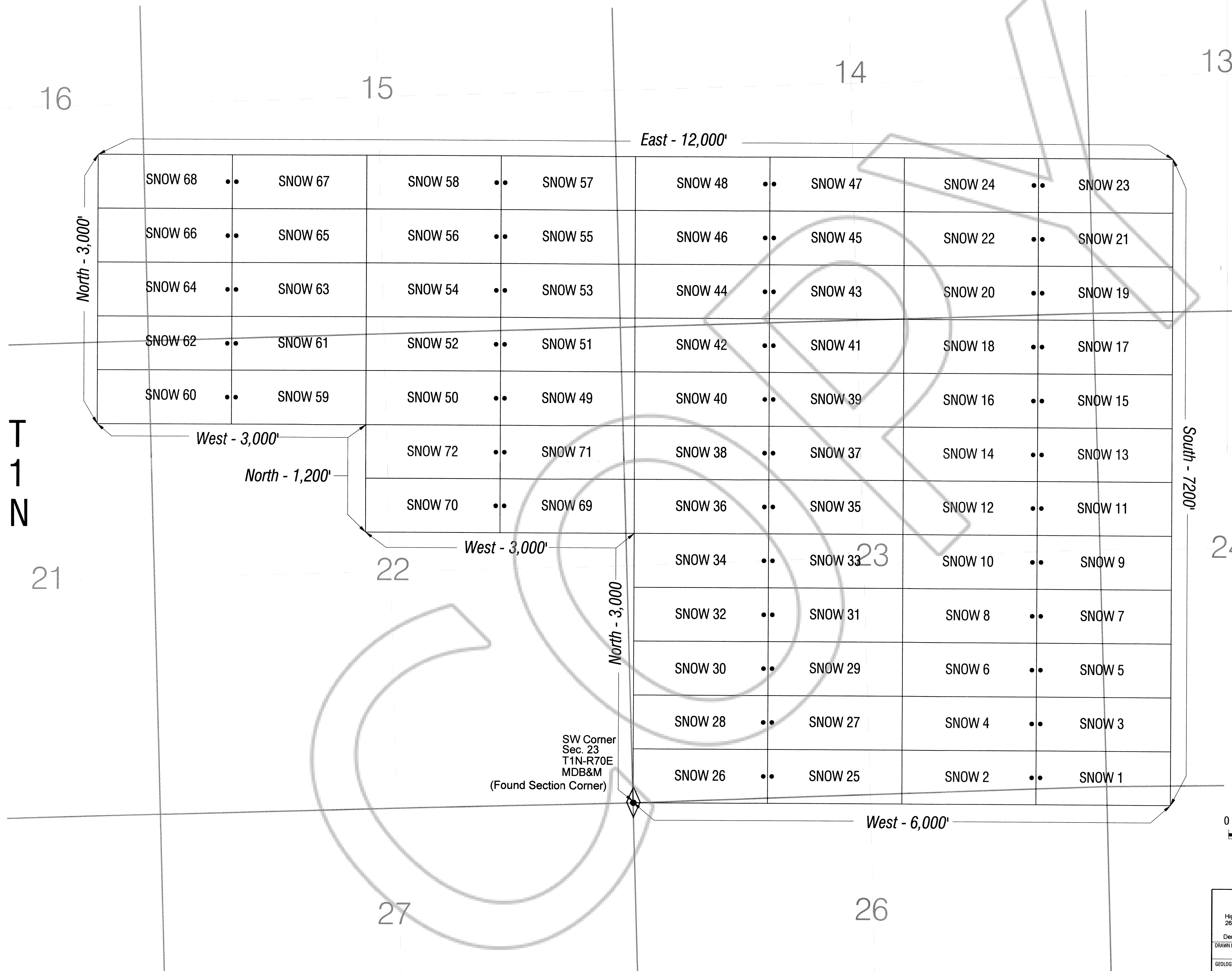
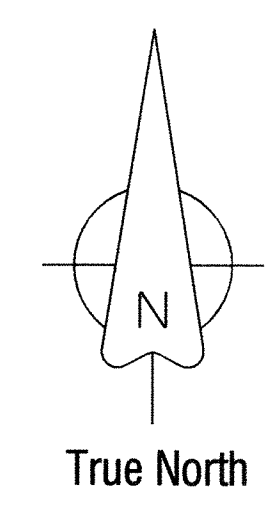


R70E MDB&M

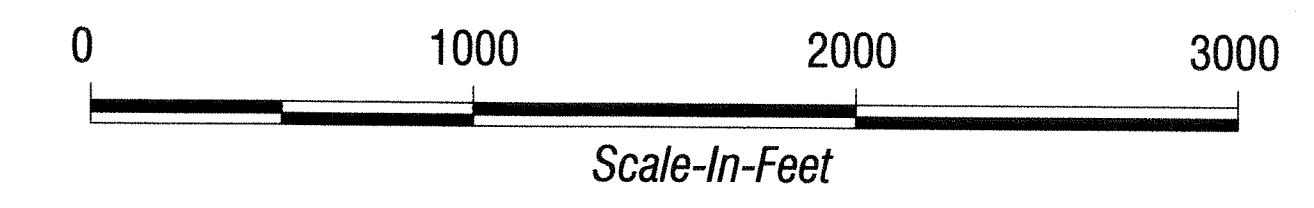


Location Dates:
Snow 1 - 68 located on December 6, 2012

Locator:
Nevada High Desert Gold, LLC
2696 S. Colorado Blvd.
Suite 240
Denver, Colorado 80222



DOC # 0140666
02/17/2012 03:40 PM
Official Record
Recording requested by:
NEVADA HIGH DESERT GOLD, LLC
Lincoln County - NV
Leslie Boucher - Recorder
Fee: \$1,064.00 Page 1 of 1
RPT: Recorded By: SE
Book- 268 Page- 0740



SW Corner
Sec. 23
T1N-R70E
MDB&M
(Found Section Corner)

<p>High Desert Gold Corp. 2696 S. Colorado Blvd. Suite 240 Denver, Colorado 80222</p>		<h2>Gold Springs Project</h2> <h3>Snow Lode Mining Claims</h3> <p>Lincoln County, Nevada</p>	
DRAWN BY: GEOLOGY BY: LAST REVISION: Claims	DATE: 1/29/12 DATE: 1/29/12	PROJECT NO.: PROJECT: Gold Springs	REV: A MINING CLAIMS
SCALE: 1"=500'		SHEET 1 OF 1	

T
1
N

21

22

27

14

23

26

13

24