

SEC 5

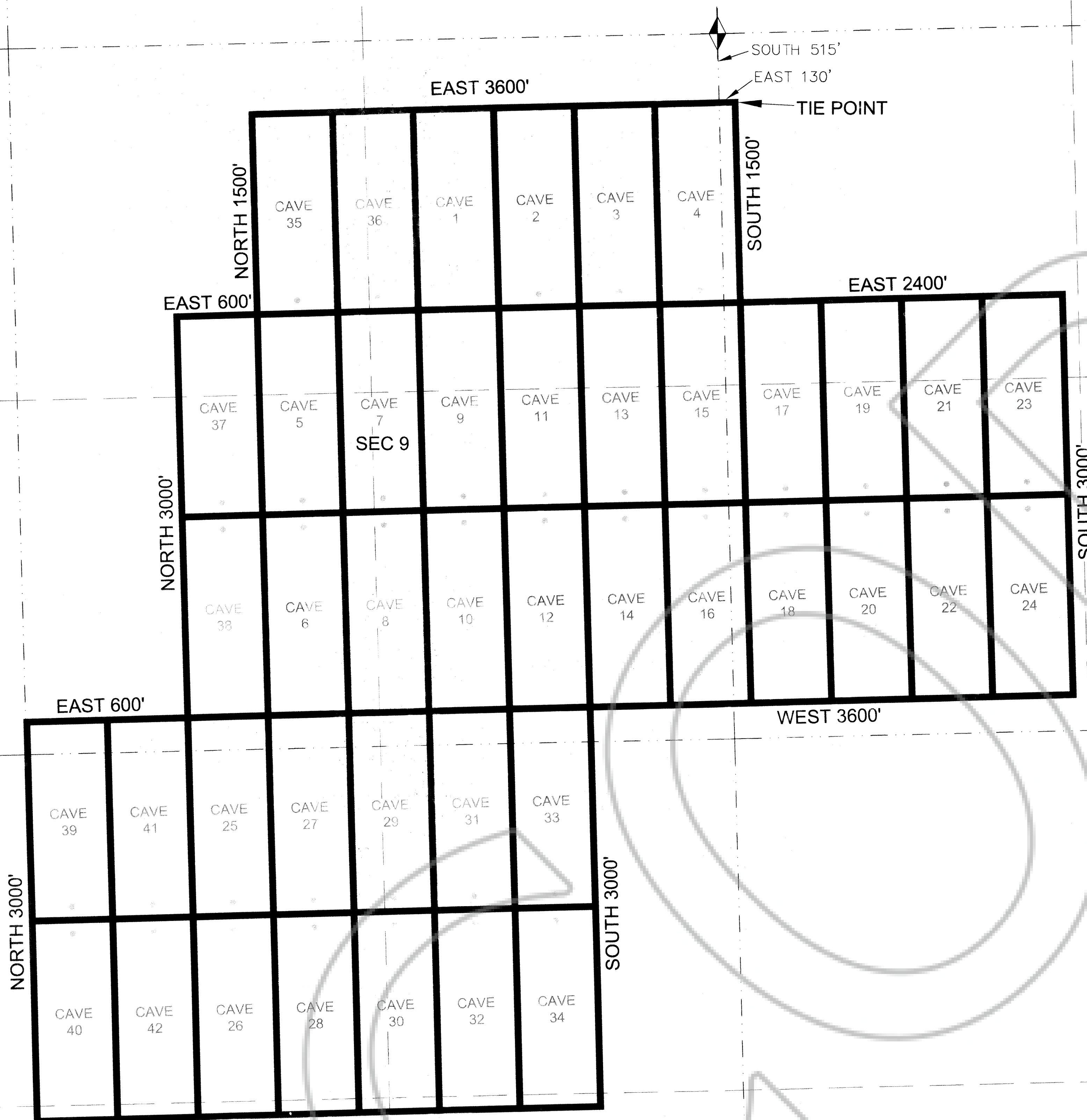
SEC 4

SEC 3

TOWNSHIP 5 NORTH, RANGE 63 EAST

SEC 8

SEC 17



DESCRIPTION

MAP OF: CAVE 1-42, CAVE MINING CLAIMS, LINCOLN COUNTY, NEVADA

CLAIM LOCATION DATES:

CAVE 1-4 12/02/11
 CAVE 5-24 12/03/11
 CAVE 25-34 12/08/11
 CAVE 35-42 12/10/11

NARRATIVE

SECTION LINES SHOWN ON THIS MAP WERE DERIVED FROM THE UNITED STATES DEPARTMENT OF INTERIOR GEOLOGICAL SURVEY QUADRANGLES: SILVER KING WELL, SIDEHILL PASS, NEVADA. BLM DIGITAL FILES (RECORD TYPE "GCDB") WERE ALSO USED.

LEGEND

- SPECIFIES MINING MONUMENT SET 20' FROM END-CENTERS OF CLAIM. (UNLESS OTHERWISE NOTED ON PLAT)
- ◆ BLM (RECORD) SECTIONAL MONUMENT (UNLESS OTHERWISE NOTED ON PLAT)
- SECTION LINE
- QUARTER SECTION LINE
- - - TOWNSHIP OR RANGE LINE

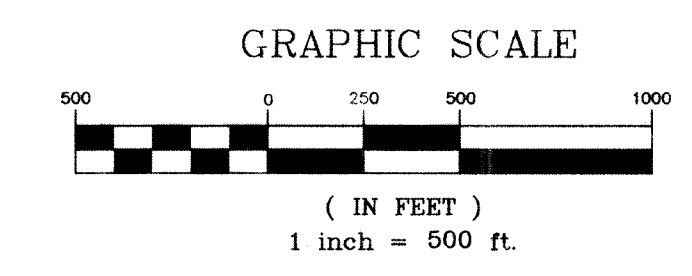
NOTES:

ALL CLAIMS ARE 600' X 1500', WITH ALL LOCATION MONUMENTS OFFSET 20' FROM END-CENTERS (MID-POINT):

TIE POINT: NORTHEAST CORNER OF CAVE 4 IS SOUTH 515 FEET, AND EAST 130 FEET FROM THE NORTHWEST CORNER OF SECTION 10, TOWNSHIP 5 NORTH, RANGE 63 EAST, MOUNT DIABLO MERIDIAN, NEVADA.

LOCATOR: NORTH EXPLORATION LLC, 1295 N. BLUFF ST., ST. GEORGE, UT. 84770

THE FOLLOWING DOCUMENT CONTAINS NO PERSONAL INFORMATION AS DEFINED BY NRS 603A.040



LODE CLAIM MAP
 CAVE 1-42
 RECORD OF MINING CLAIMS

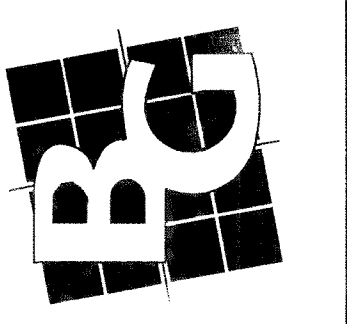
LOCATED IN
 SECTIONS 9-10, 16-17
 TOWNSHIP 5 NORTH, RANGE 63 EAST,
 MOUNT DIABLO MERIDIAN NEVADA
 PREPARED FOR:
 NORTH EXPLORATION LLC

DOC # 0140593
 Official Record
 Recording requested by
 North Exploration LLC
 Lincoln County - NV
 Leslie Boucher - Recorder
 Fee: \$634.00 Page: 6 of 11
 8/27/11 Recorded By: LB
 Book- 265 Page- 0967



0140593

BUSH & GUDGELL, INC.
 Engineers - Planners - Surveyors
 205 East Tabernacle Suite #4
 St. George, Utah 84770
 Phone (435) 673-2337 / Fax (435) 673-3161
 www.bushandgudgell.com



DATE: 08/27/11	DRAWN: LB	APPROVED: LB	SCALE: AS SHOWN	JOB NO. 101103
----------------	-----------	--------------	-----------------	----------------

RECORD OF MINING CLAIMS
 TOWNSHIPS 5 NORTH, RANGE 63 EAST
 MOUNT DIABLO MERIDIAN