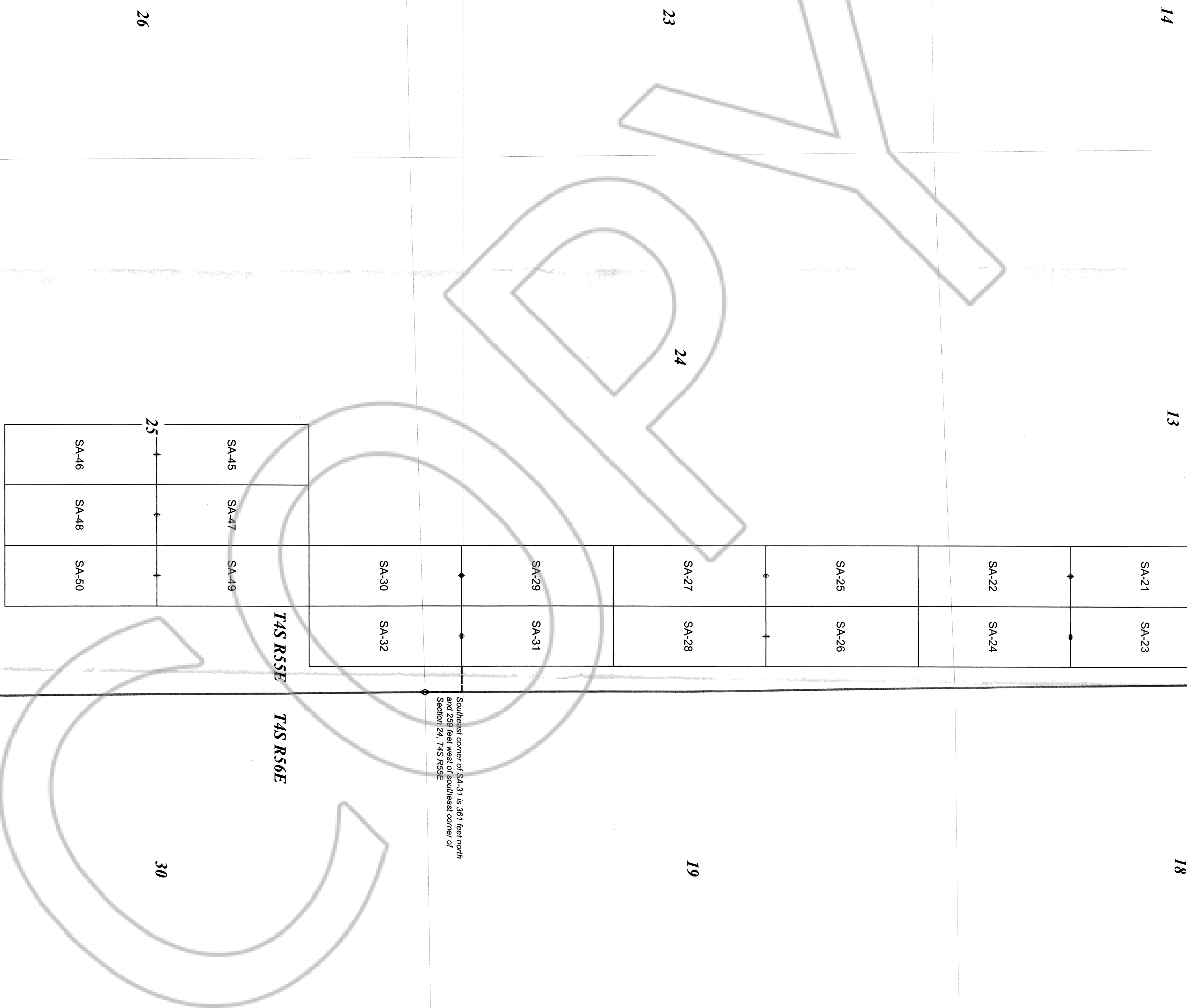


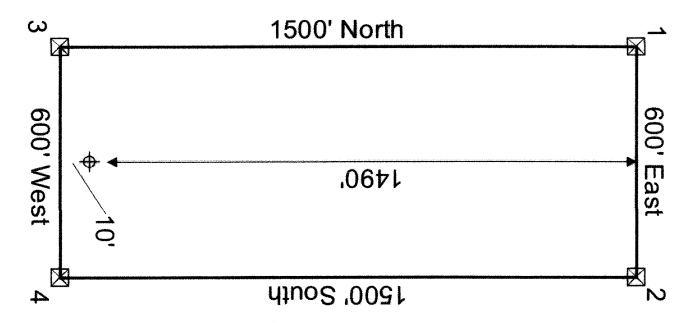
SA-58	SA-60	SA-62	SA-64	SA-66	See Sheet 2
SA-59	SA-61	SA-63	SA-65	SA-67	SA-68
					SA-69



Southeast corner of SA-31 is 361 feet north and 259 feet west of southeast corner of Section 24, T4S R55E

14 13 18 19 23 24 25 26 30 31 35 36

Typical Claim



Location Dates
 SA lode claims 2, 25 and 27 were located on Nov. 8, 2011.
 SA lode claims 28, 29 and 30 were located on Nov. 9, 2011.
 SA lode claims 29, 32 and 45-50 were located on Nov. 10, 2011.
 SA lode claims 58-61 were located on Oct. 20, 2011.

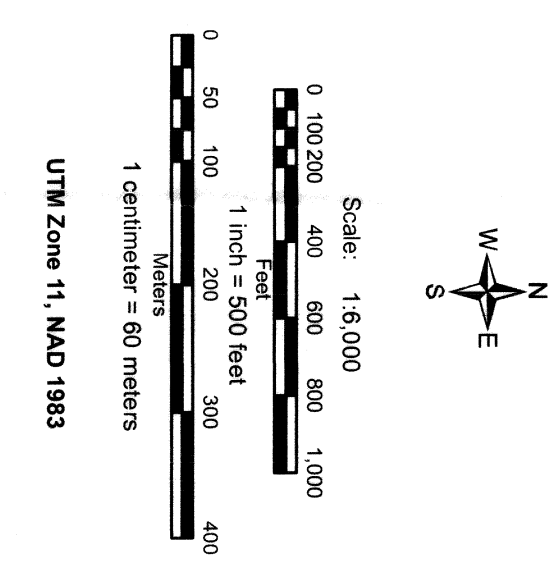
Location Monuments
 Location monument is set 10 feet from endline.

Notes:
 All location monuments are 2"x2"x4" wooden posts with scribed metal tags.
 All claims are 600' x 1500'.

Locator:
 P. J. Gidd (USA) Inc.
 1021 S. Virginia St., Suite 110
 Elko, NV 89801

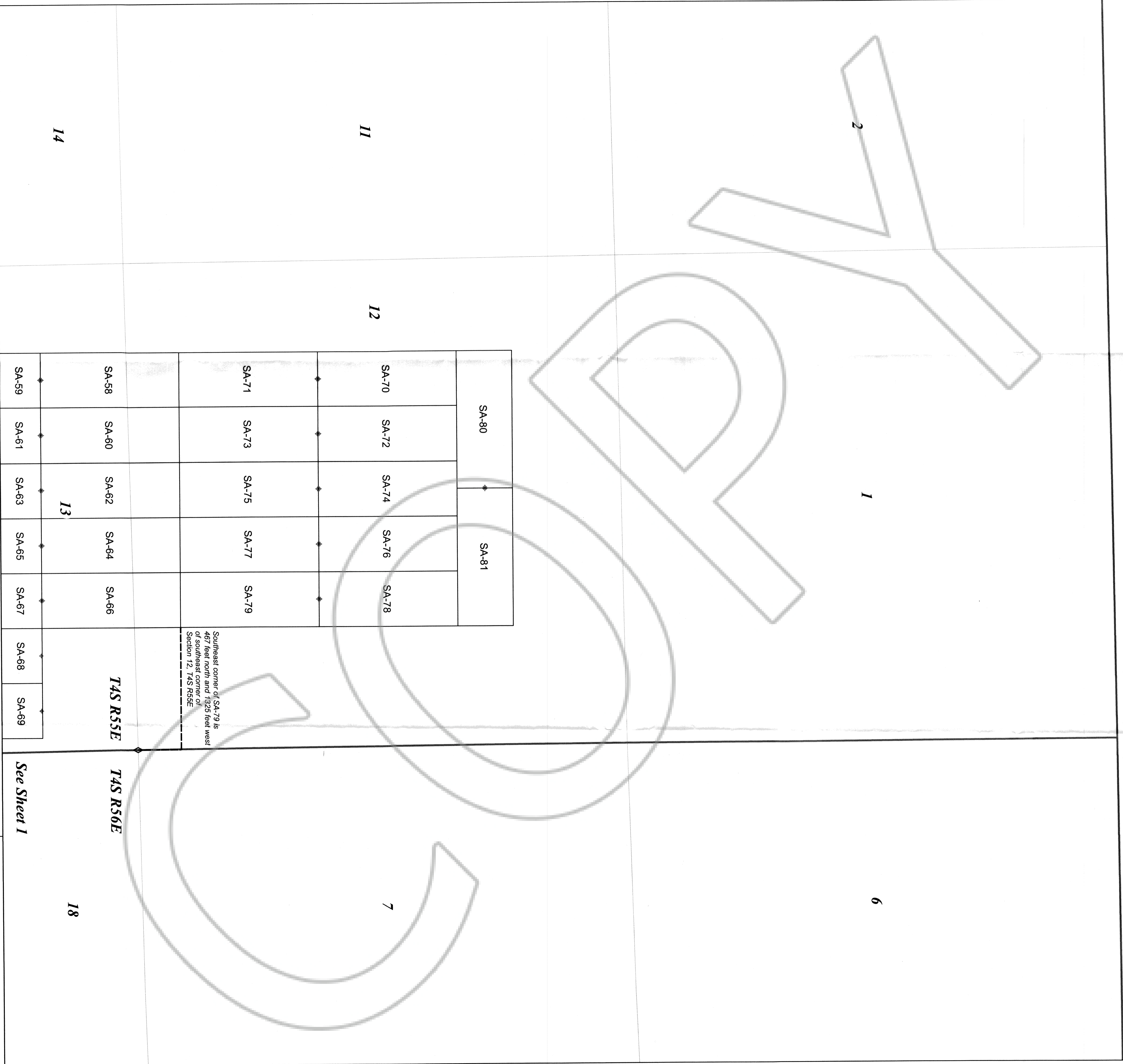
Legend

- Location Monuments
- Claims
- Sections (BLM GCDS)
- Townships
- Section Corner
- Tie Line



**SA 21-32, 45-50, and 58-81
 Lode Mining Claims
 Sheet 1 of 2**

Sections 12, 13, 24, and 25, Township 4 South, Range 55 East
 Mt. Diablo Base Line and Meridian
 Lincoln County, Nevada



SA-80		SA-81	
SA-70	SA-72	SA-74	SA-76
SA-71	SA-73	SA-75	SA-77
SA-79	SA-79		
SA-59	SA-61	SA-63	SA-65
SA-58	SA-60	SA-62	SA-64
		SA-66	SA-66
		SA-67	SA-67
		SA-68	SA-69

Southeast corner of SA-79 is 467 feet north and 1325 feet west of southeast corner of Section 12, T4S R55E

Location Dates:
 SA 21-25 and 27 were located on Nov. 8, 2011.
 SA lode claims 26 and 28 were located on Nov. 9, 2011.
 SA lode claims 29-32 and 45-50 were located on Nov. 10, 2011.
 SA lode claims 58-81 were located on Oct. 20, 2011.

Location Monuments:
 Location monument is set 10 feet from endline.

Notes:
 All location monuments are 2"x2"x4" wooden posts with scribed metal tags.
 All claims are 600'x1500'.

Locator:
 Placeroid (USA) Inc.
 1031 Railroad St., Suite 110
 Elko, NV 89801

Legend

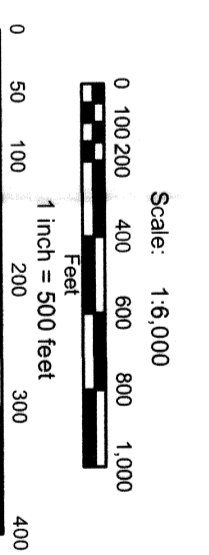
Location Monuments

Claims

Sections (BLM GCD) B

Townships

Section Corner



Scale: 1:6,000
 UTM Zone 11, NAD 1983

See Sheet 1

SA 21-32, 45-50, and 58-81
 Lode Mining Claims

Sheet 2 of 2

Sections 12, 13, 24, and 25, Township 4 South, Range 55 East
 Mt. Diablo Base Line and Meridian
 Lincoln County, Nevada

