

14

15

13

16

NW corner of BR-98 is 879 feet north
 and 3081 feet east of SW corner of
 Section 15, T3S R69E
 (UTM Grid)

BR-98	BR-99
BR-100	BR-101
BR-102	BR-103
BR-104	BR-105
BR-106	BR-107
BR-108	BR-109
BR-110	BR-111
BR-112	BR-113
BR-114	BR-115
BR-116	BR-117
BR-118	BR-119
BR-120	BR-121
BR-122	BR-123
BR-124	BR-125
BR-126	BR-127
BR-128	BR-129

23

24

21

22

T3S
 R69E

26

25

27

28

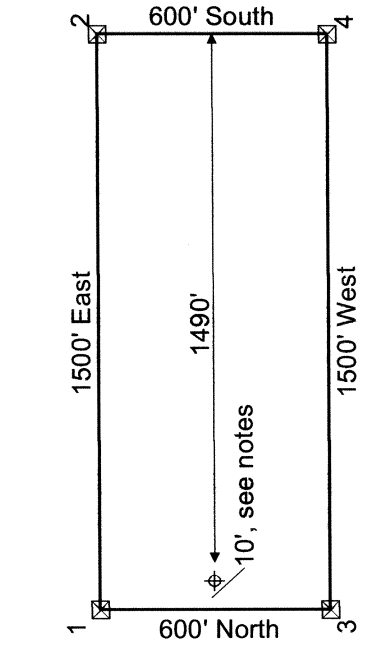
35

34

33

36

Typical Claim



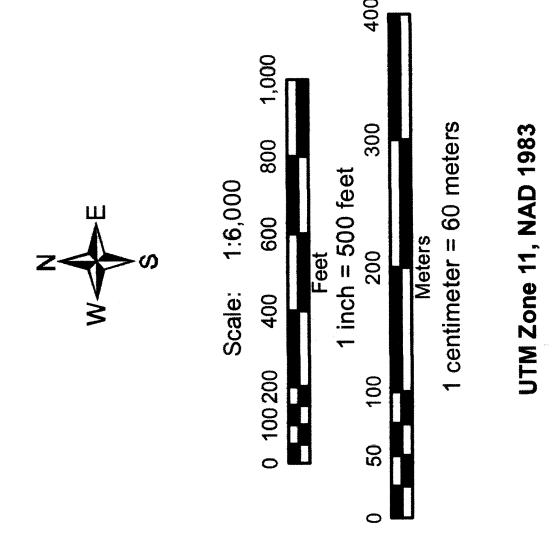
Location Dates
 BR lode claims 98-129 were located on Sep. 29, 2011.

Location Monuments
 Location monument is set 10 feet from endline.

Notes:
 All location monuments are 2"x2"x4" wooden posts with scribed metal tags.
 All claims are 600'x1500'.

Locator:
 Pilot Gold (USA), Inc.
 1031 Railroad St., Suite 110
 Elko, NV 89801 USA

- Legend**
- ◆ Location Monuments
 - Claims
 - - - Tie Line
 - ▭ Sections (BLM GCDB)
 - ▭ Townships



**BR 98-129
 Lode Mining Claims**

Sections 14, 15, 22, 23, 26, and 27,
 Township 3 South, Range 69 East,
 Mt. Diablo Base Line and Meridian
 Lincoln County, Nevada