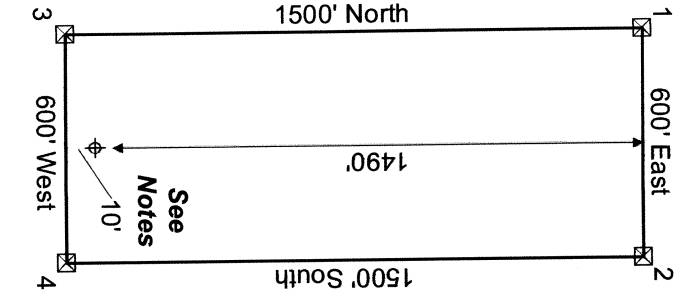


SE corner of SA-7 is 361 feet north and 1453 feet west of SE corner of Section 24, T4S R55E

T4S R55E
T4S R56E

| | | | | | |
|-------|-------|-------|-------|-------|-------|
| 13 | | 14 | | 19 | |
| SA-9 | SA-17 | SA-19 | SA-10 | SA-18 | SA-20 |
| SA-11 | SA-13 | SA-15 | SA-12 | SA-14 | SA-16 |
| SA-1 | SA-3 | SA-5 | SA-2 | SA-4 | SA-6 |
| SA-7 | SA-8 | | | | |

Typical Claim



Location Dates
SA-10e claims 9 were located on Sep. 13, 2011.
SA-10e claims 9-20 were located on Sep. 14, 2011.

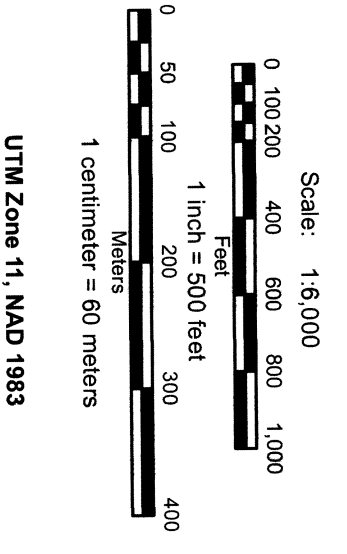
Location Monuments
Location monument is set 10 feet from endline.

Notes:
All location monuments are 2"x2"x4" wooden posts with scribed metal tags.
All claims are 600'x1500'.

Locator:
Pilot Gold (USA) Inc.
1031 Railroad St., Suite 110
Elko, NV 89801

Legend

- Location Monuments
- Claims
- Tie Line
- Sections (BLM GCDs)
- Townships



DOC # 0139970
12/01/2011 04:38 PM
Official Record
Pilot Gold USA Inc.
Lincoln County, NV
Laser Bookkeeper - Recorder
Fee \$384.00 Page 1 of 1
Book-398 Page-0153
0139970

SA 1-29
Lode Mining Claims

Sections 13, 24 and 25, Township 4 South, Range 55 East
Mt. Diablo Base Line and Meridian
Lincoln County, Nevada