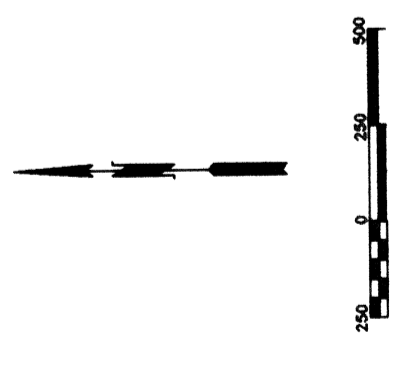


12



Scale 1" = 500'  
1:6000

11

237	•	246	••	258	••	273	••	292	••	313	••	335
238	•	247	••	259	••	274	••	293	••	314	••	336
239	•	248	••	260	••	275	••	294	••	315	••	337
240	•	249	••	261	••	276	••	295	••	316	••	338
241	•	250	••	262	••	277	••	296	••	317	••	339
242	•	251	••	263	••	278	••	297	••	318	••	340
243	•	252	••	264	••	279	••	298	••	319	••	341
244	•	253	••	265	••	280	••	299	••	320	••	342
245	•	254	••	266	••	281	••	300	••	321	••	343
		255	••	267	••	282	••	301	••	322	••	344
		256	••	268	••	283	••	302	••	323	••	345
		257	••	269	••	284	••	303	••	324	••	346
		270	••	272	••	285	••	304	••	325	••	347
		271	••		••	286	••	305	••	326	••	348
			••		••	287	••	306	••	327	••	349
			••		••	288	••	307	••	328	••	350
			••		••	289	••	308	••	329	••	351
			••		••	290	••	309	••	330	••	352
			••		••	291	••	310	••	331	••	353
			••		••		••	311	••		••	

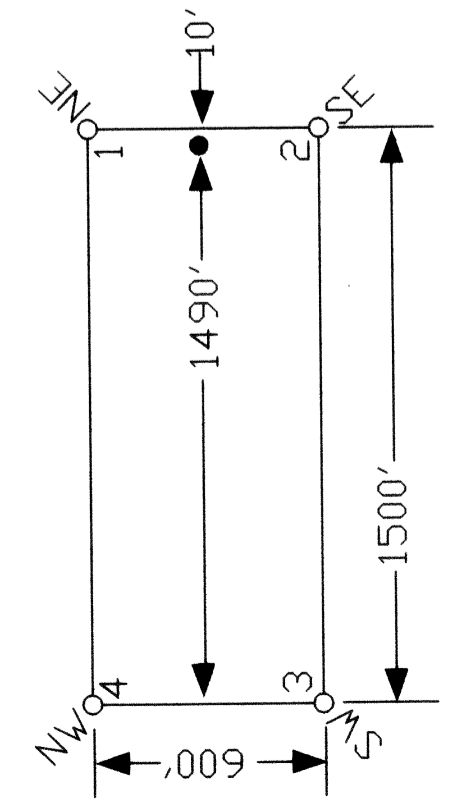
25

30

**LOCATION DATES:**  
 September 6, 2011 - BERG 273-311, 313-331, 335-353  
 September 7, 2011 - BERG 14-16, 21-24, 35-38, 43-45, 193-213  
 October 9, 2011 - BERG 237-272  
 148 Total Claims

**TIE POINT DATA:**  
 The Southeast corner of BERG 353 lies approximately  
 15,027 feet west and 20,071 feet north of the northeast  
 corner of section 15, T.1S., R.57E., M.D.B.M.

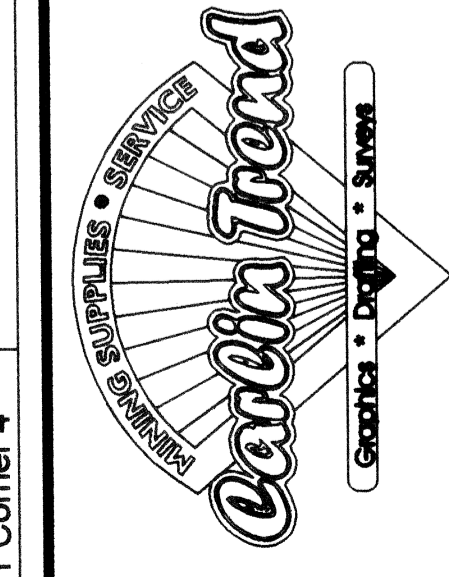
TYPICAL CLAIMS



BERG Lode Claims Witness Post Locations  
 Witness posts were used due to treacherous terrain  
 and/or snow conditions. It was impractical and dangerous  
 to continue. Posts are properly marked to  
 designate their right place (NRS 517.030).

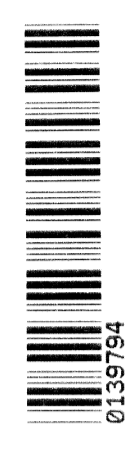
Witness posts for the following corners are located  
 at the following distances from their true positions:

Corner Post	Approximate Distance in Feet	North/South
SE35 Corner 2	1200 North	
SE36 Corner 2	600 North	
SW24 Corner 3	1800 North	
SW23 Corner 3	1200 North	
SW22 Corner 3	600 North	
NW21 Corner 4	600 South	
NE353 Corner 1	1200 South	
SE351 Corner 2	1200 North	
SE349 Corner 1	600 South	
SW331 Corner 3	3000 North	
NW331 Corner 4	2400 North	
NW330 Corner 4	1800 North	
NW328 Corner 4	1200 North	
NW328 Corner 4	600 North	
NW291 Corner 3	1200 North	
NW291 Corner 4	600 North	



Locator:  
 Silver International Inc.  
 545 S. Valley View Dr. #100, St. George, Utah 84770  
 BERG Lode Claims  
 T.1N., R.56,57E; Lincoln County, Nevada

**NOTES:**  
 Location Monuments set 10' from claim end centerlines  
 unless noted on map. All location monuments and claim  
 posts are 2"x2"x4' wooden stakes.  
 Dashed section lines indicate projected sections.  
 All Claims lie approximately due west and east.



14

224 225 226 227 228 229 230 231 232 233 234 235 236

193 194 195

224 225 226 227 228 229 230 231 232 233 234 235 236

193 194 195

224 225 226 227 228 229 230 231 232 233 234 235 236

193 194 195

224 225 226 227 228 229 230 231 232 233 234 235 236

193 194 195

224 225 226 227 228 229 230 231 232 233 234 235 236

193 194 195

224 225 226 227 228 229 230 231 232 233 234 235 236

193 194 195

224 225 226 227 228 229 230 231 232 233 234 235 236

193 194 195

224 225 226 227 228 229 230 231 232 233 234 235 236

193 194 195

224 225 226 227 228 229 230 231 232 233 234 235 236

193 194 195

224 225 226 227 228 229 230 231 232 233 234 235 236

193 194 195

224 225 226 227 228 229 230 231 232 233 234 235 236

193 194 195

224 225 226 227 228 229 230 231 232 233 234 235 236

193 194 195

224 225 226 227 228 229 230 231 232 233 234 235 236

193 194 195

224	193	196	199	202	205	208	211
223	194	197	200	203	206	209	212
222	195	198	201	204	207	210	213
221	1	58	59	116	117	174	175

**TIE POINT DATA:**

The Southwest corner of BERG 195 lies approximately 15,027 feet west and 32,071 feet north of the northeast corner of section 15, T.1S., R.57E., M.D.B.M.

**LOCATION DATES:**

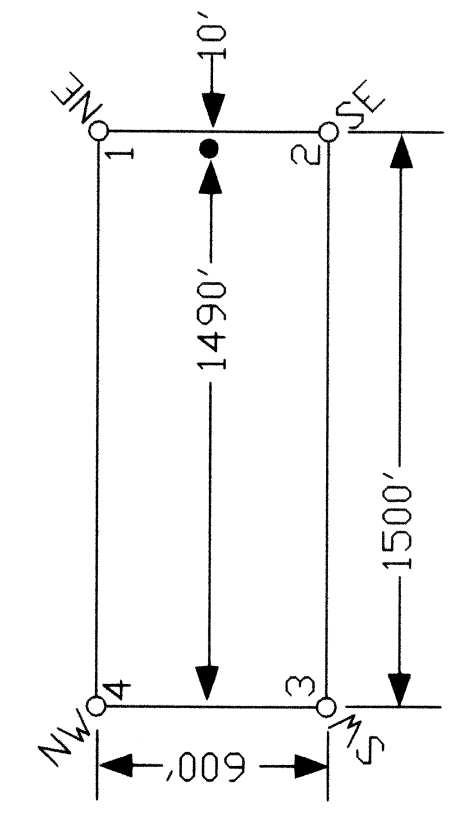
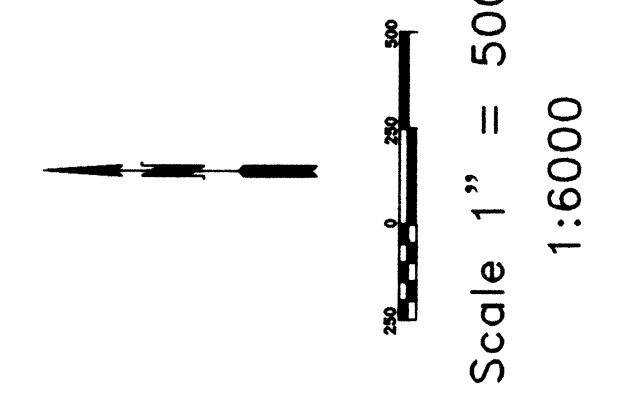
September 6, 2011 - BERG 273-311, 313-331, 335-353  
 September 7, 2011 - BERG 14-16, 21-24, 35-38, 43-45, 193-213  
 October 9, 2011 - BERG 237-272  
 148 Total Claims

**TIE POINT DATA:**

The Northeast corner of BERG 45 lies approximately 12,027 feet west and 24,271 feet north of the northeast corner of section 15, T.1S., R.57E., M.D.B.M.

**TIE POINT DATA:**

The Northeast corner of BERG 38 lies approximately 12,027 feet west and 20,071 feet north of the northeast corner of section 15, T.1S., R.57E., M.D.B.M.



**BERG Lode Claims Witness Post Locations**  
 Witness posts were used due to treacherous terrain and/or snow conditions. It was impractical and dangerous to continue. Posts are properly marked to designate their right place (NRS 517.030).

Witness posts for the following corners are located at the following distances from their true positions:

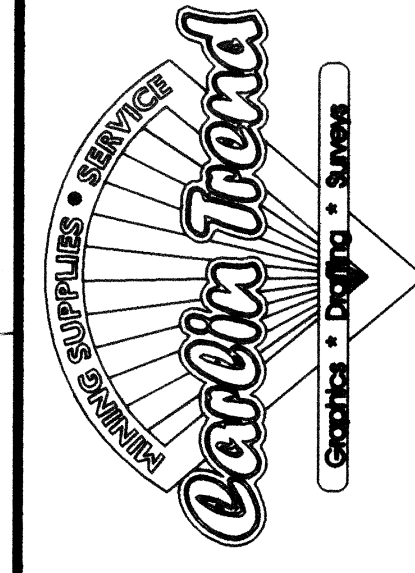
Corner Post	Approximate Distance in Feet	North/South
SE335 Corner 2	1200	North
SE336 Corner 2	600	North
SW224 Corner 3	1800	North
SW223 Corner 3	1200	North
SW222 Corner 3	600	North
NW221 Corner 4	600	South
SE351 Corner 1	1200	South
SE350 Corner 2	1200	North
NE349 Corner 1	600	South
SW331 Corner 3	3000	North
NW331 Corner 4	2400	North
NW330 Corner 4	1800	North
NW329 Corner 4	1200	North
NW328 Corner 4	600	North
SW291 Corner 3	1200	North
NW291 Corner 4	600	North

**NOTES:**

Location Monuments set 10' from claim end centerlines unless noted on map. All location monuments and claim posts are 2"x2"x4' wooden stakes.

Dashed section lines indicate projected sections.

All Claims lie approximately due west and east.



Location:  
**Silver International Inc.**  
 545 S. Valley View Dr. #100, St. George, Utah 84770  
**BERG Lode Claims**  
 T.1N., R.56,57E.; Lincoln County, Nevada