

20

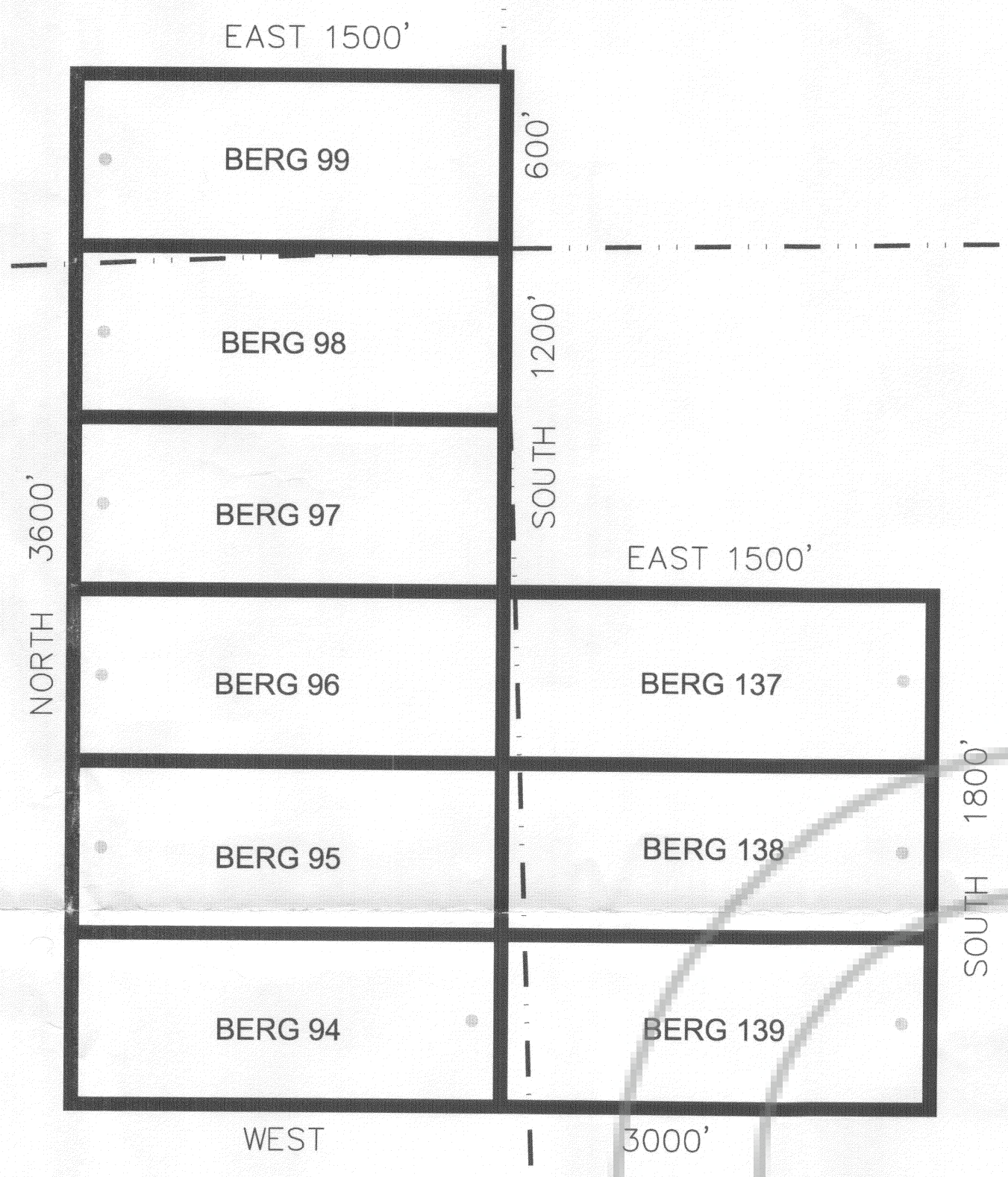
21

29

28

32

33



T 1 N , R 57 E

DESCRIPTION

MAP OF: BERG 94-99 & 137-139 FRIEBERG MINING CLAIMS, LINCOLN COUNTY, NEVADA

NARRATIVE

SECTION LINES SHOWN ON THIS MAP WERE DERIVED FROM THE UNITED STATES DEPARTMENT OF INTERIOR GEOLOGICAL SURVEY QUADRANGLE: WORTHINGTON PEAK, NV 1985. BLM PROTRACTION (RECORD TYPE "RECT") DATED OCTOBER 26, 1964, AND CADASTRAL SURVEY DATED DECEMBER 13, 1881 WERE ALSO USED.

LEGEND

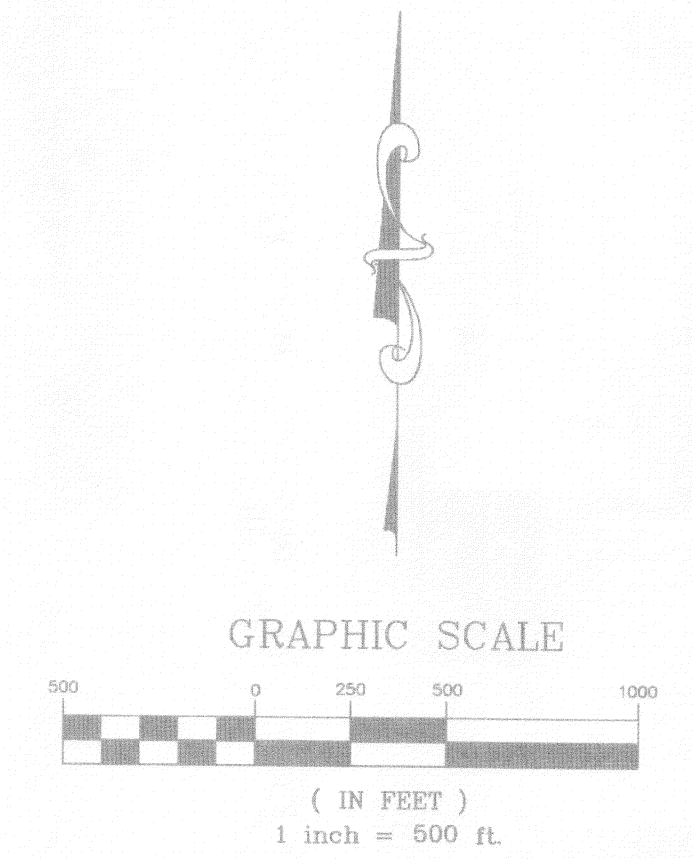
- SPECIFIES MINING MONUMENT SET 10' FROM END-CENTERS OF CLAIM. (UNLESS OTHERWISE NOTED ON PLAT)
- ◆ BLM (RECORD) SECTIONAL MONUMENT (UNLESS OTHERWISE NOTED ON PLAT)
- SECTION LINE
- TOWNSHIP OR RANGE LINE

NOTES:

ALL CLAIMS ARE 600' X 1500', WITH ALL LOCATION MONUMENTS OFFSET 10' FROM END-CENTERS (MID-POINT) AS SHOWN ON SHEETS 2-3.

SOUTHEAST CORNER OF BERG 99 IS THE SOUTHWEST CORNER OF SECTION 21, TOWNSHIP 1 NORTH, RANGE 57 EAST, MOUNT DIABLO MERIDIAN, NEVADA.

LOCATOR: RENVIC ERICKSON FOR SILVER INTERNATIONAL INC.



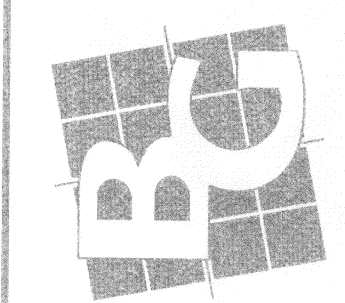
FRIEBERG RECORD OF MINING CLAIMS

LOCATED IN SECTIONS 20, 21, 28, 29, 32 AND 33 TOWNSHIP 1 NORTH, RANGE 57 EAST, MOUNT DIABLO MERIDIAN NEVADA

PREPARED FOR:
SILVER INTERNATIONAL INC.
545 SOUTH VALLEY VIEW DR.
ST. GEORGE, UT 84770

DOC # 0139487
09/15/2011 03:56 PM
Official Record
Recording requested by SILVER INTERNATIONAL INC.
Lincoln County - NV
Leslie Boucher - Recorder
Fee \$139.00 Page 1 of 1
RPTT Recorded By: RE
Book-266 Page-0650

BUSH & GUDGELL, INC.
Engineers - Planners - Surveyors
205 East Tabernacle Suite #4
St. George, Utah 84770
Phone (435) 673-2337 / Fax (435) 673-3161
www.bushandgudgell.com



DATE: 09/28/11
DRAWN: BRH
APPROVED:
SCALE: 1" = 500'
JOB NO.: 101103

FRIEBERG MINING CLAIMS
SEC 28, T19N, R66E
MOUNT DIABLO BASE & MERIDIAN