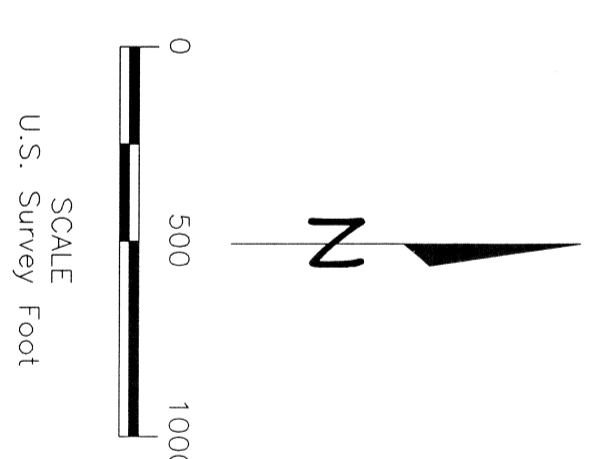
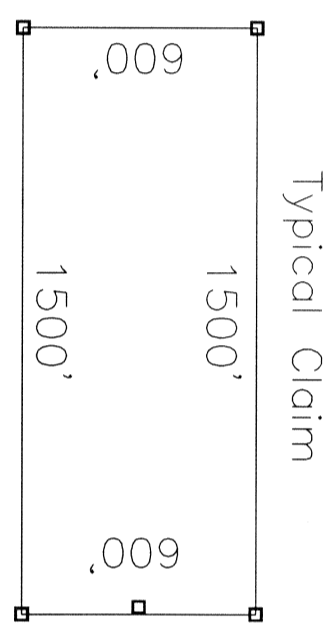


LOCATION DATES:
 LP 437-441,448-477,523-537,552-566 AUG. 5, 2011
 LP 483,484,493-522,538-551 AUG. 6, 2011
 LP 400-436,442-447,478-482,485-492 AUG. 7, 2011

NOTE:
 ALL LP CLAIMS ARE TIED TO
 THE NE CORNER OF SECTION
 5, T4S, R59E, MDBM.

EXPLANATION

- +** Found PLS Monument
- Projected Section Lines
- Lode Mining Claim Monument
- Adjoining Mining Claim



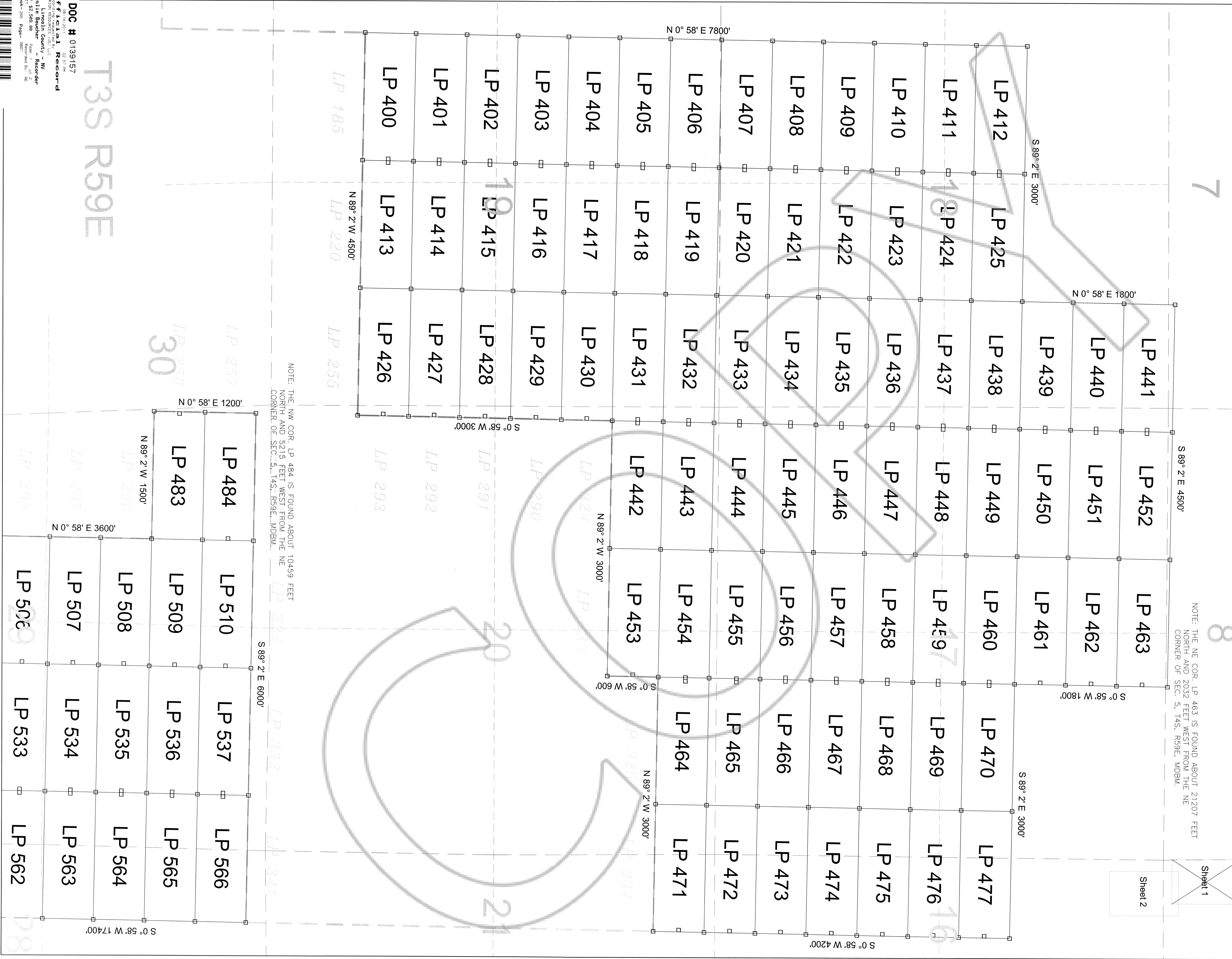
LP LODGE MINING CLAIMS

CLAIM MAP
 T3&4S, R59E, MDBM
 LINCOLN COUNTY NEVADA

AURION RESOURCES (US) LLC
 2711 Centerville Road, Suite 400
 WILMINGTON, DELAWARE 19808

Drawn By: RBL Date: Aug 2011
 AutoCAD 2010 Drawing File: LP County Aug 2011.DWG
 Survey and Map by:
 LYMAN EXPLORATION & SURVEYING, OUTFIT
 612 West 1635 North, Suite 101, Cannon, UT 84015
 (801)540-0317

Sheet 1 of 2



NOTE: THE NW COR. LP 484 IS FOUND ABOUT 10459 FEET NORTH AND 5215 FEET WEST FROM THE NE CORNER OF SEC. 5, T4S, R59E, MDBM.

NOTE: THE NE COR. LP 463 IS FOUND ABOUT 21207 FEET NORTH AND 2032 FEET WEST FROM THE NE CORNER OF SEC. 5, T4S, R59E, MDBM.

T3S R59E

DOC # 0139157
 Official Record
 Recorded in accordance with:
 Lincoln County - NV
 Leslie Boucher - Recorder
 Book- 206 Page- 0802
 Date of 2-13-2011
 Fee \$2,589.00
 139357

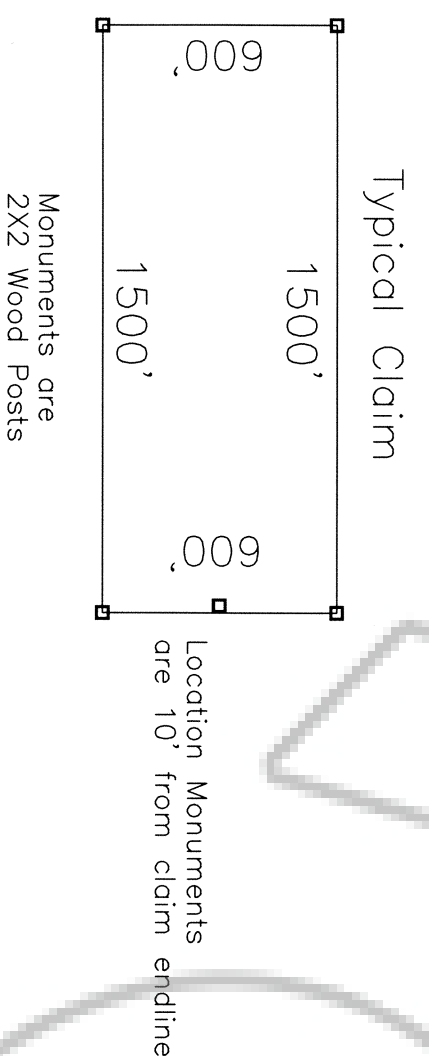
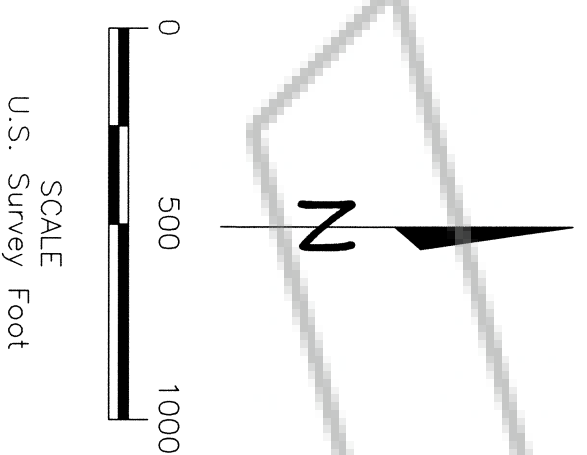
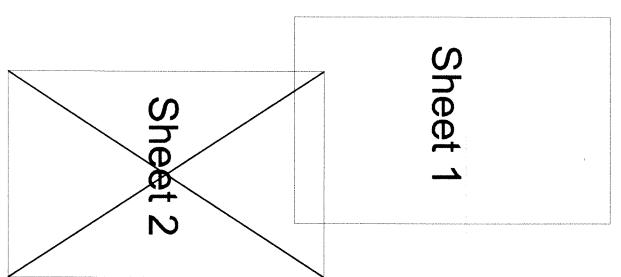
LP LODGE MINING CLAIMS

CLAIM MAP
T3&4S, R59E, MDBM
LINCOLN COUNTY NEVADA

AURION RESOURCES (US) LLC
2711 Centerville Road, Suite 400
WILMINGTON, DELAWARE 19808

Drawn By: RBL Date: Aug 2011
File: LP County Aug 2011.DWG
Survey and Map by:
LYMAN EXPLORATION & SURVEYING OUTFIT
612 West 1635 North, Suite 101, Clinton, UT 84015
(801)540-0317

Sheet 2 of 2

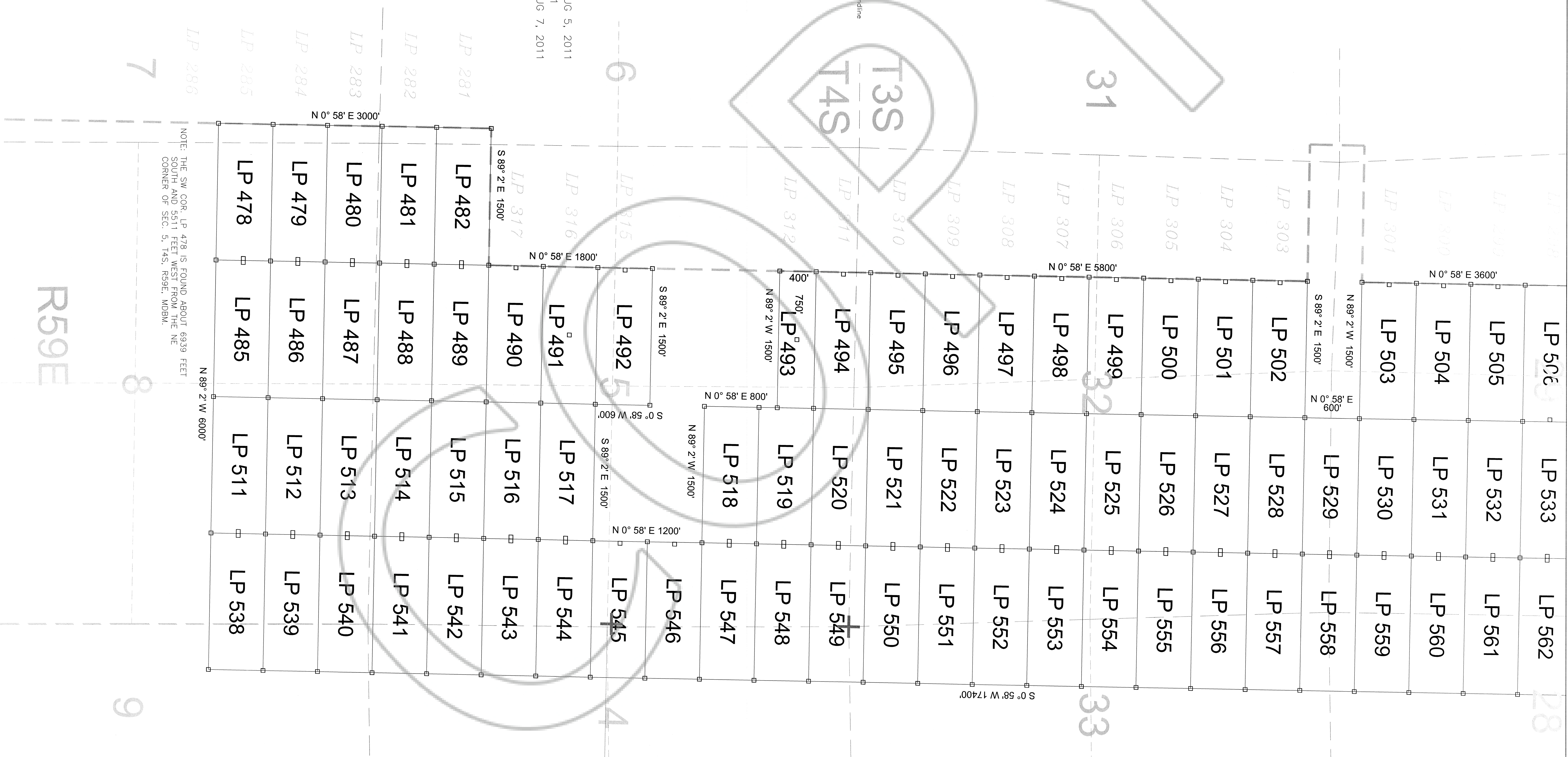


EXPLANATION

- + Found PLS Monument
- - - Projected Section Lines
- Lode Mining Claim Monument
- Adjoining Mining Claim

LOCATION DATES:
LP 437-441,448-477,523-537,552-566 AUG 5, 2011
LP 483,484,493-522,538-551 AUG 6, 2011
LP 400-436,442-447,478-482,485-492 AUG 7, 2011

NOTE:
ALL LP CLAIMS ARE TIED TO
THE NE CORNER OF SECTION
5, T4S, R59E, MDBM.



NOTE: THE SW COR. LP 478 IS FOUND ABOUT 6939 FEET SOUTH AND 5511 FEET WEST FROM THE NE CORNER OF SEC. 5, T4S, R59E, MDBM.