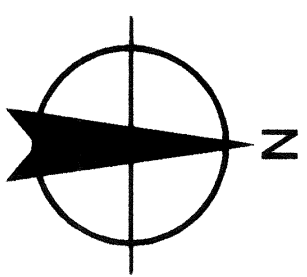


NOTES:
 LOCATION MONUMENTS SET 10' FROM CLAIM END
 CENTERLINES. ALL LOCATION MONUMENTS AND CLAIM
 POSTS ARE 2"x2"x4' WOODEN STAKES.

DASHED SECTION LINES INDICATE PROJECTED SECTIONS.

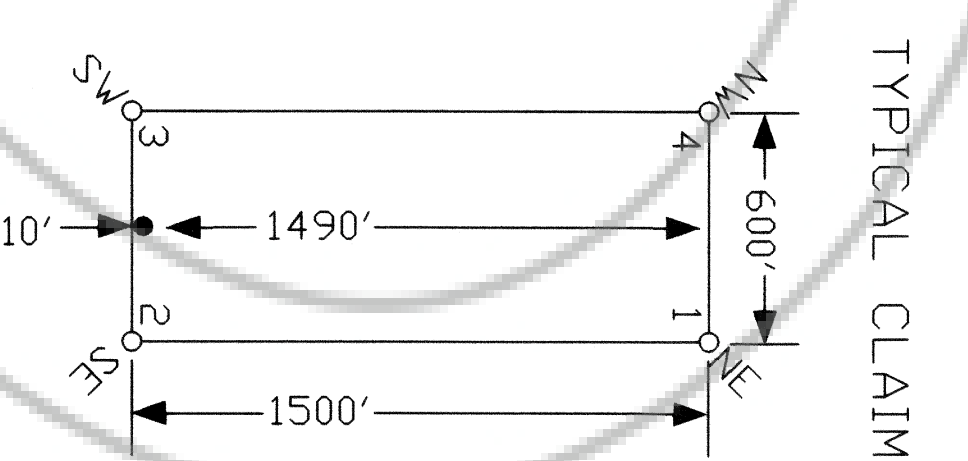


Scale 1" = 500'
 1:6000

LILY 199 •• LILY 178	LILY 157 •• LILY 136	LILY 107 •• LILY 78	LILY 47 •• LILY 16
LILY 198 •• LILY 177	LILY 156 •• LILY 135	LILY 106 •• LILY 77	LILY 46 •• LILY 15
LILY 197 •• LILY 176	LILY 155 •• LILY 134	LILY 105 •• LILY 76	LILY 45 •• LILY 14
NBI 299	NBI 244 •• LILY 133	LILY 104 •• LILY 75	LILY 44 •• LILY 13
NBI 300	NBI 245 •• LILY 132	LILY 103 •• LILY 74	LILY 43 •• LILY 12
	•• LILY 131	LILY 102 •• LILY 73	LILY 42 •• LILY 11
	NBI 247 •• LILY 130	LILY 101 •• LILY 72	LILY 41 •• LILY 10
	NBI 248 •• LILY 129	LILY 100 •• LILY 71	LILY 40 •• LILY 9
	NBI 249 •• LILY 128	LILY 99 •• LILY 70	LILY 39 •• LILY 8
	NBI 250 •• LILY 127	LILY 98 •• LILY 69	LILY 38 •• LILY 7
	NBI 251 •• LILY 126	LILY 97 •• LILY 68	LILY 37 •• LILY 6
	NBI 252	NBI 226	LILY 36 •• LILY 5
	NBI 253	NBI 227	•• LILY 66
	NBI 254	NBI 228	NBI 201 •• LILY 67
		NBI 202	•• LILY 66
		NBI 203	NBI 170
			NBI 134 •• LILY 3
			NBI 135 •• LILY 2
			•• LILY 1

EXISTING NBI CLAIMS

EXISTING NBI CLAIMS

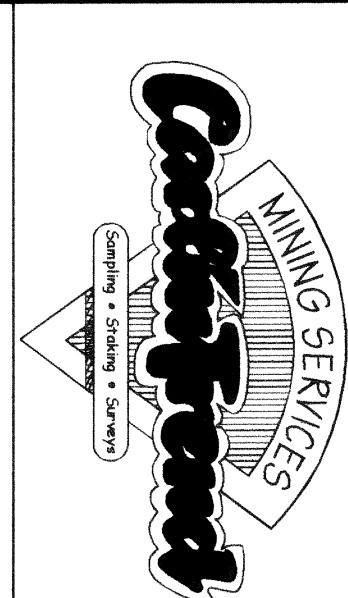


THE POINT DATA:
 THE SOUTHEAST CORNER OF LILY 197 LIES APPROXIMATELY
 813 FEET WEST AND 12,897 FEET NORTH OF THE NORTHWEST
 CORNER OF SECTION 4, T.6N., R.68E., M.D.B.M.

LOCATION DATES:
 May 14, 2011 - LILY 1-6,35-37
 May 15, 2011 - LILY 7-34,38-65
 May 17, 2011 - LILY 66-80,97-109
 May 18, 2011 - LILY 81-96, 110-125
 May 19, 2011 - LILY 136-154, 157-175, 191-196, 212-217
 May 20, 2011 - LILY 126-135, 155-156, 185-190, 206-211
 May 21, 2011 - LILY 176-184, 197-205

(217 Total Claims)

DOC # 0138956
 Official Record
 Registered by Nevada State Board of
 Lincoln County - NV
 Leslie Boucher - Recorder
 Fee: \$3,259.00
 Book-256 Page- 0552

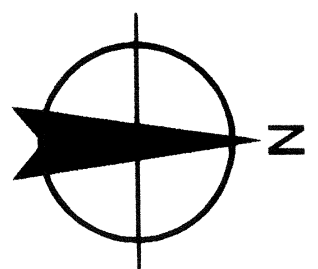


Desert Hawk Resources, Inc.
 HC 10, Box 15, Atlanta Mine, Pioche, Nevada 89043
 LILY 1-217 Lode Claims
 T.7N., R.67&68E., Lincoln County, Nevada

369 - 5th STREET ELKO, NV 89601 FAX: (775) 734-6887
 DATE: JULY 2011
 DRAWN BY: [blank]
 SHEET 1 OF 2

NOTES:
 LOCATION MONUMENTS SET 10' FROM CLAIM END
 CENTERLINES. ALL LOCATION MONUMENTS AND CLAIM
 POSTS ARE 2"x2"x4' WOODEN STAKES.

DASHED SECTION LINES INDICATE PROJECTED SECTIONS.



Scale 1" = 500'
 1:5000

LILY 217	••	LILY 196	LILY 175	••	LILY 154	LILY 125	••	LILY 96	LILY 65	••	LILY 34
LILY 216	••	LILY 195	LILY 174	••	LILY 153	LILY 124	••	LILY 95	LILY 64	••	LILY 33
LILY 215	••	LILY 194	LILY 173	••	LILY 152	LILY 123	••	LILY 94	LILY 63	••	LILY 32
LILY 214	••	LILY 193	LILY 172	••	LILY 151	LILY 122	••	LILY 93	LILY 62	••	LILY 31
LILY 213	••	LILY 192	LILY 171	••	LILY 150	LILY 121	••	LILY 92	LILY 61	••	LILY 30
LILY 212	••	LILY 191	LILY 170	••	LILY 149	LILY 120	••	LILY 91	LILY 60	••	LILY 29
LILY 211	••	LILY 190	LILY 169	••	LILY 148	LILY 119	••	LILY 90	LILY 59	••	LILY 28
LILY 210	••	LILY 189	LILY 168	••	LILY 147	LILY 118	••	LILY 89	LILY 58	••	LILY 27
LILY 209	••	LILY 188	LILY 167	••	LILY 146	LILY 117	••	LILY 88	LILY 57	••	LILY 26
LILY 208	••	LILY 187	LILY 166	••	LILY 145	LILY 116	••	LILY 87	LILY 56	••	LILY 25
LILY 207	••	LILY 186	LILY 165	••	LILY 144	LILY 115	••	LILY 86	LILY 55	••	LILY 24
LILY 206	••	LILY 185	LILY 164	••	LILY 143	LILY 114	••	LILY 85	LILY 54	••	LILY 23
LILY 205	••	LILY 184	LILY 163	••	LILY 142	LILY 113	••	LILY 84	LILY 53	••	LILY 22
LILY 204	••	LILY 183	LILY 162	••	LILY 141	LILY 112	••	LILY 83	LILY 52	••	LILY 21
LILY 203	••	LILY 182	LILY 161	••	LILY 140	LILY 111	••	LILY 82	LILY 51	••	LILY 20
LILY 202	••	LILY 181	LILY 160	••	LILY 139	LILY 110	••	LILY 81	LILY 50	••	LILY 19
LILY 201	••	LILY 180	LILY 159	••	LILY 138	LILY 109	••	LILY 80	LILY 49	••	LILY 18
LILY 200	••	LILY 179	LILY 158	••	LILY 137	LILY 108	••	LILY 79	LILY 48	••	LILY 17

R.67E.
 R.68E.

T.7N.

24

13

12

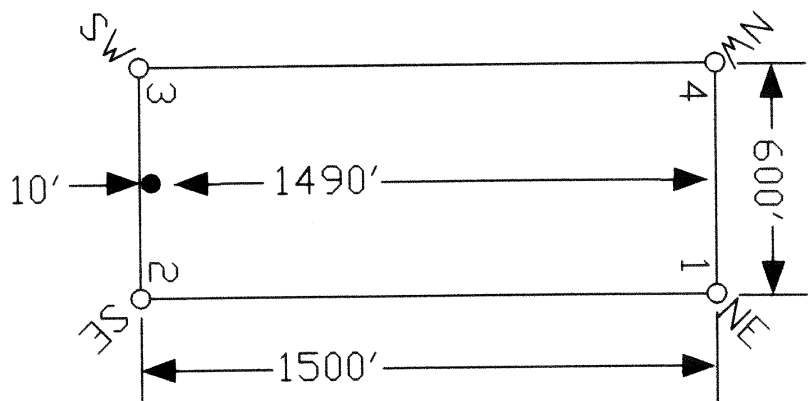
19

18

20

17

TYPICAL CLAIM

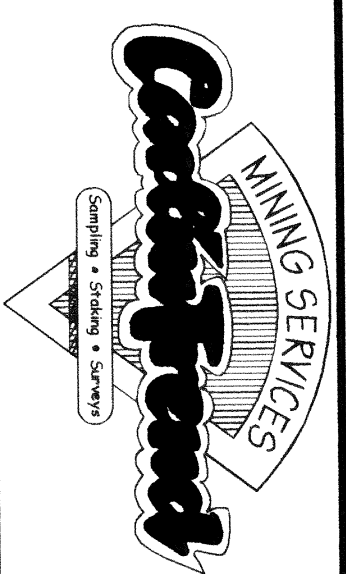
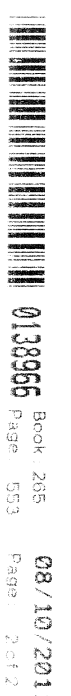


THE POINT DATA:
 THE SOUTHEAST CORNER OF LILY 217 LIES APPROXIMATELY
 12,813 FEET WEST AND 12,897 FEET NORTH OF THE NORTHWEST
 CORNER OF SECTION 4, T.6N., R.68E., M.D.B.M.

LOCATION DATES:

- May 14, 2011 - LILY 1-6, 35-37
- May 15, 2011 - LILY 7-34, 38-65
- May 17, 2011 - LILY 66-80, 97-109
- May 18, 2011 - LILY 81-96, 110-125
- May 19, 2011 - LILY 136-154, 157-175, 191-196, 212-217
- May 20, 2011 - LILY 126-135, 155-156, 185-190, 206-211
- May 21, 2011 - LILY 176-184, 197-205

(217 Total Claims)



Location:
 Desert Hawk Resources, Inc.
 HC 10, Box 15, Atlanta Mine, Pioche, Nevada 89043
 LILY 1-217 Lode Claims
 T.7N., R.67&68E., Lincoln County, Nevada

349 S.W. STREET ELKO, NV 89801 FAX: (775) 734-6487
 DATE: July 2011
 SHEET 2 OF 2