

Official Record

Recording requested By  
NORTH EXPLORATION LLC

Lincoln County - NV  
Leslie Boucher - Recorder

Fee: \$94.00

Page 1 of 1

RPTT:

Recorded By: AE

Book- 264 Page- 0421

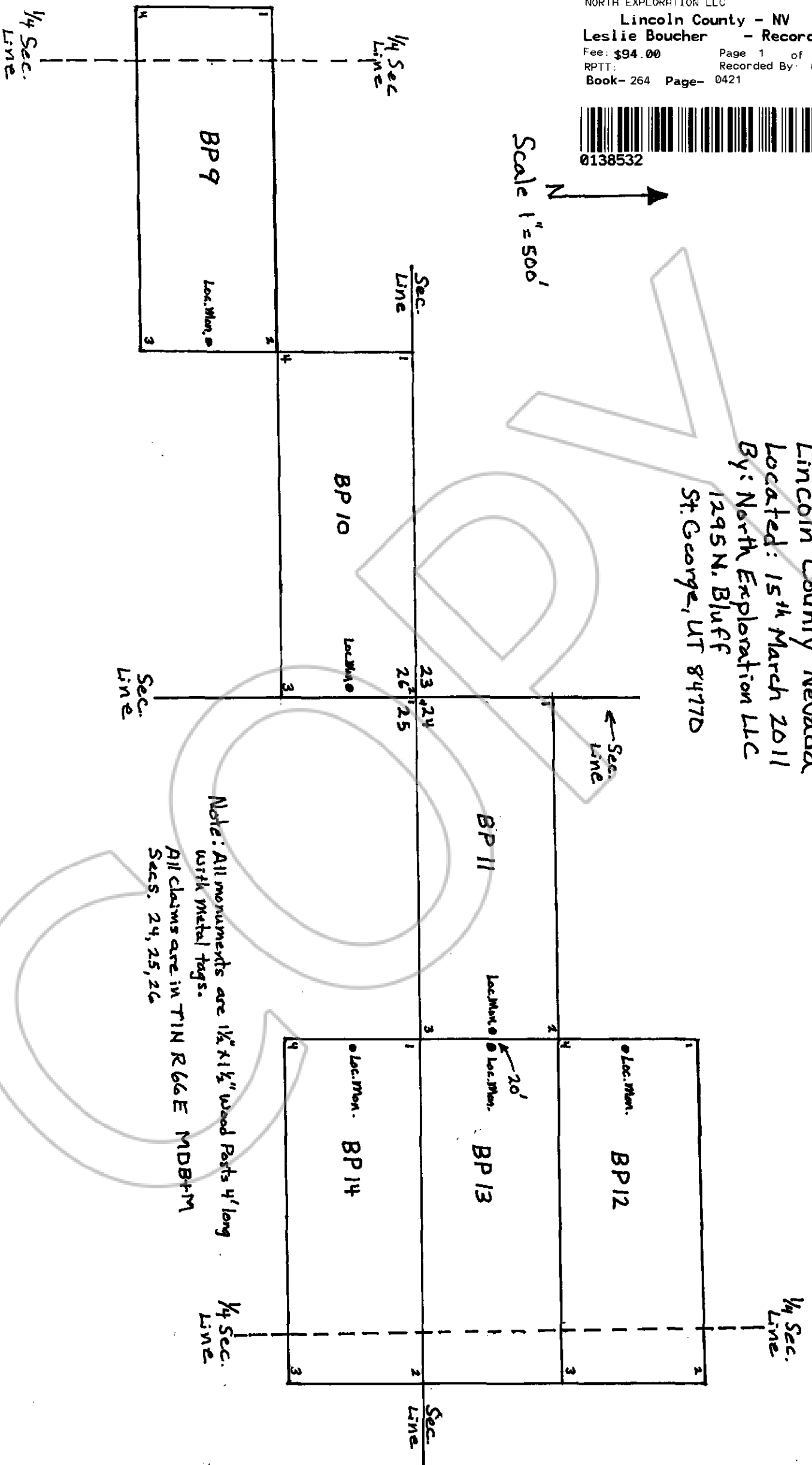


0138532

Scale 1" = 500'



Map of BP 9 Thru BP 14 Lode Claims  
Lincoln County Nevada  
Located: 15<sup>th</sup> March 2011  
By: North Exploration LLC  
1295 N. Bluff  
St. George, UT 84770



Note: All monuments are 1 1/2" x 1 1/2" wood Posts 4' long with metal tags.  
All claims are in T1N R66E MDB+M  
Secs. 24, 25, 26