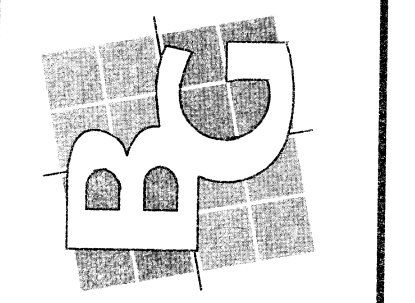




No.	Date	By	Revision

BUSH & GUDGELL, INC.
 Engineers - Planners - Surveyors
 205 East Tabernacle Suite #4
 St. George, Utah 84770
 Phone (435) 673-2337 / Fax (435) 673-3161
 www.bushandgudgell.com



DATE: 04/27/2011	DRAWN: JMS	APPROVED:	SCALE:	JOB NO.: 101103
------------------	------------	-----------	--------	-----------------

RECORD OF MINING CLAIMS
 TOWNSHIP 1 N, RANGE 56-57 E
 MOUNT DIABLO MERIDIAN

DESCRIPTION

MAP OF: BERG 1-13, 17-20, 39-42, 46-192, & 221-236 FRIEBERG MINING CLAIMS, LINCOLN COUNTY, NEVADA

NARRATIVE

SECTION LINES SHOWN ON THIS MAP WERE DERIVED FROM THE UNITED STATES DEPARTMENT OF INTERIOR GEOLOGICAL SURVEY QUADRANGLE: WORTHINGTON PEAK, NV 1985. BLM PROTRACTOR (RECORD TYPE "RECT") DATED OCTOBER 26, 1964, AND CADASTRAL SURVEY DATED DECEMBER 13, 1881 WERE ALSO USED.

LEGEND

- SPECIFIES MINING MONUMENT SET 10' FROM END-CENTERS OF CLAIM. (UNLESS OTHERWISE NOTED ON PLAT)
- ◆ BLM (RECORD) SECTIONAL MONUMENT (UNLESS OTHERWISE NOTED ON PLAT)
- - - SECTION LINE
- - - TOWNSHIP OR RANGE LINE

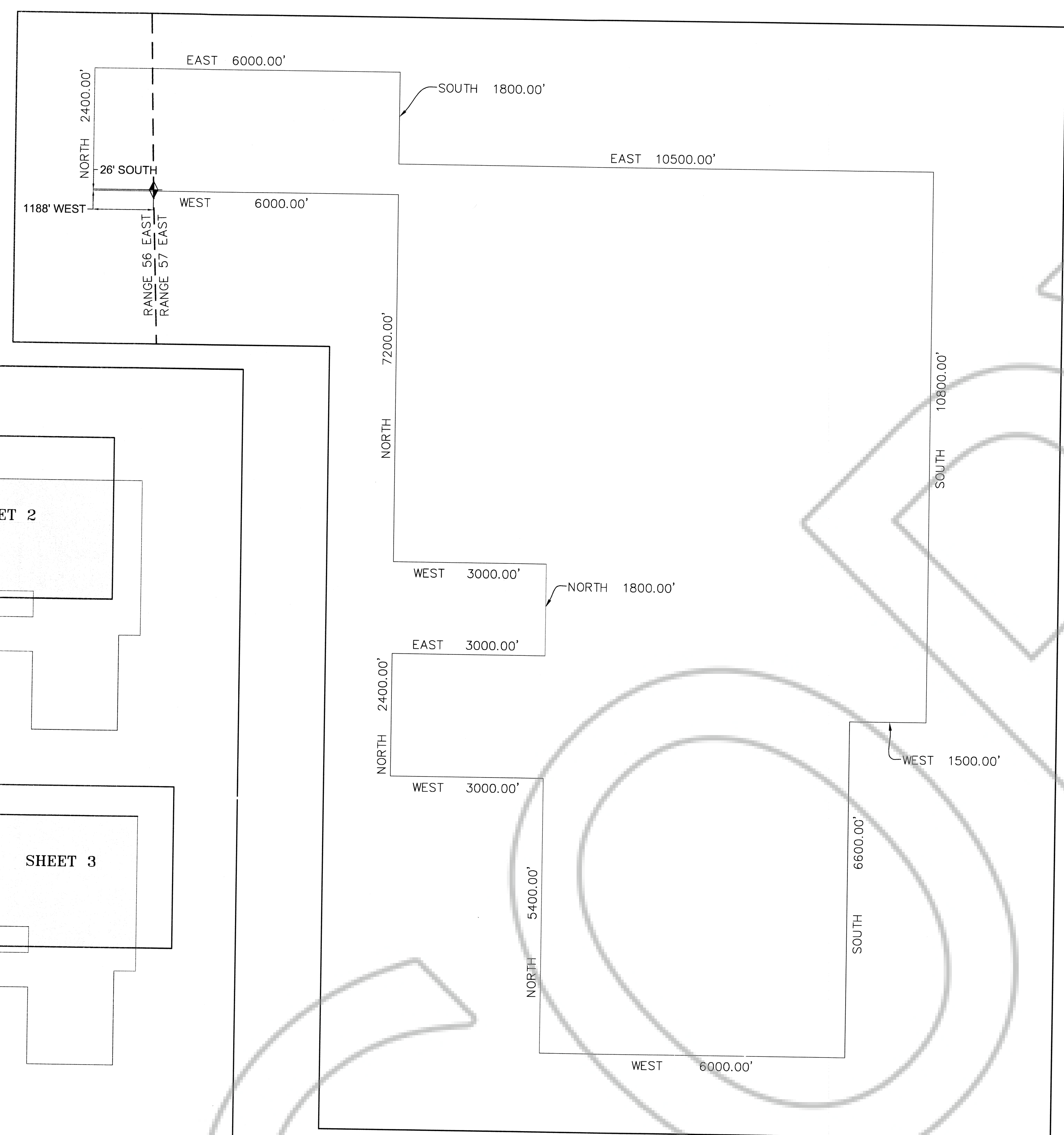
NOTES:

ALL CLAIMS ARE 600' X 1500', WITH ALL LOCATION MONUMENTS OFFSET 10' FROM END-CENTERS (MID-POINT) AS SHOWN ON SHEETS 2-3.
 SOUTHWEST CORNER OF BERG 236 IS WEST 1188 FEET, AND SOUTH 26 FEET FROM THE SOUTHWEST CORNER OF SECTION 7, TOWNSHIP 1 NORTH, RANGE 57 EAST, MOUNT DIABLO MERIDIAN, NEVADA.
 LOCATOR: RENVIC ERICKSON FOR SILVER INTERNATIONAL INC.

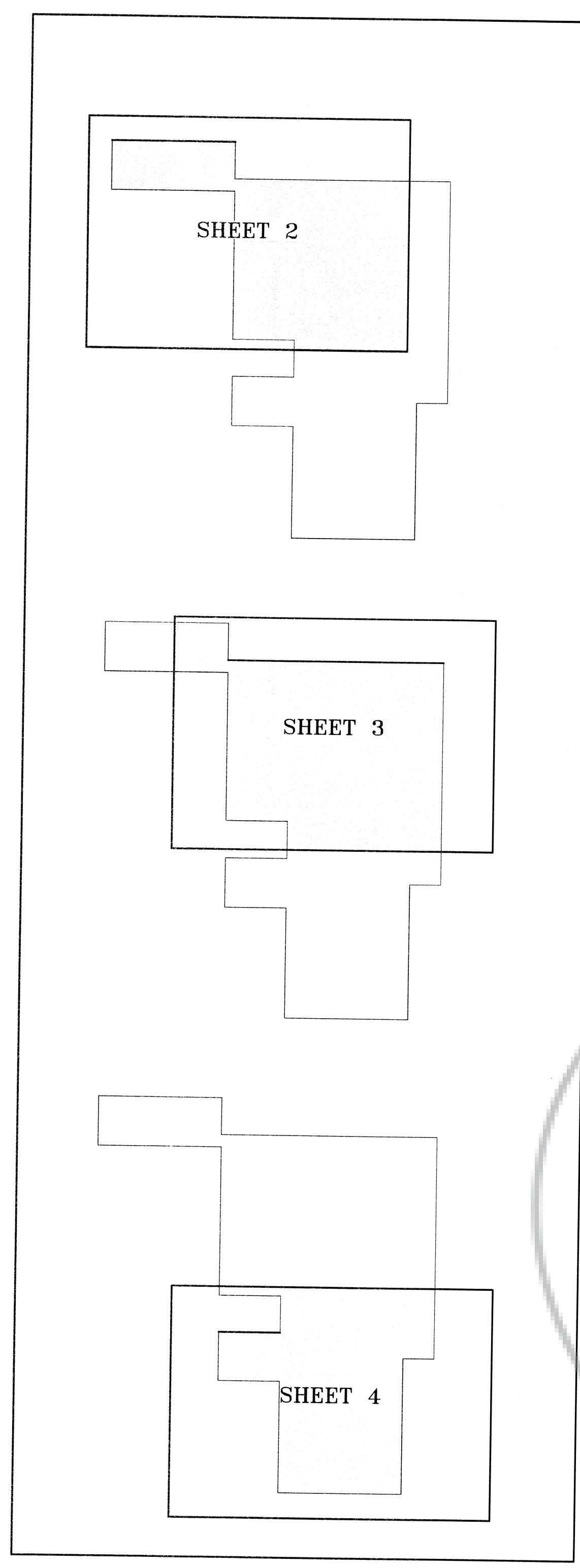


**FRIEBERG
 RECORD OF MINING CLAIMS**

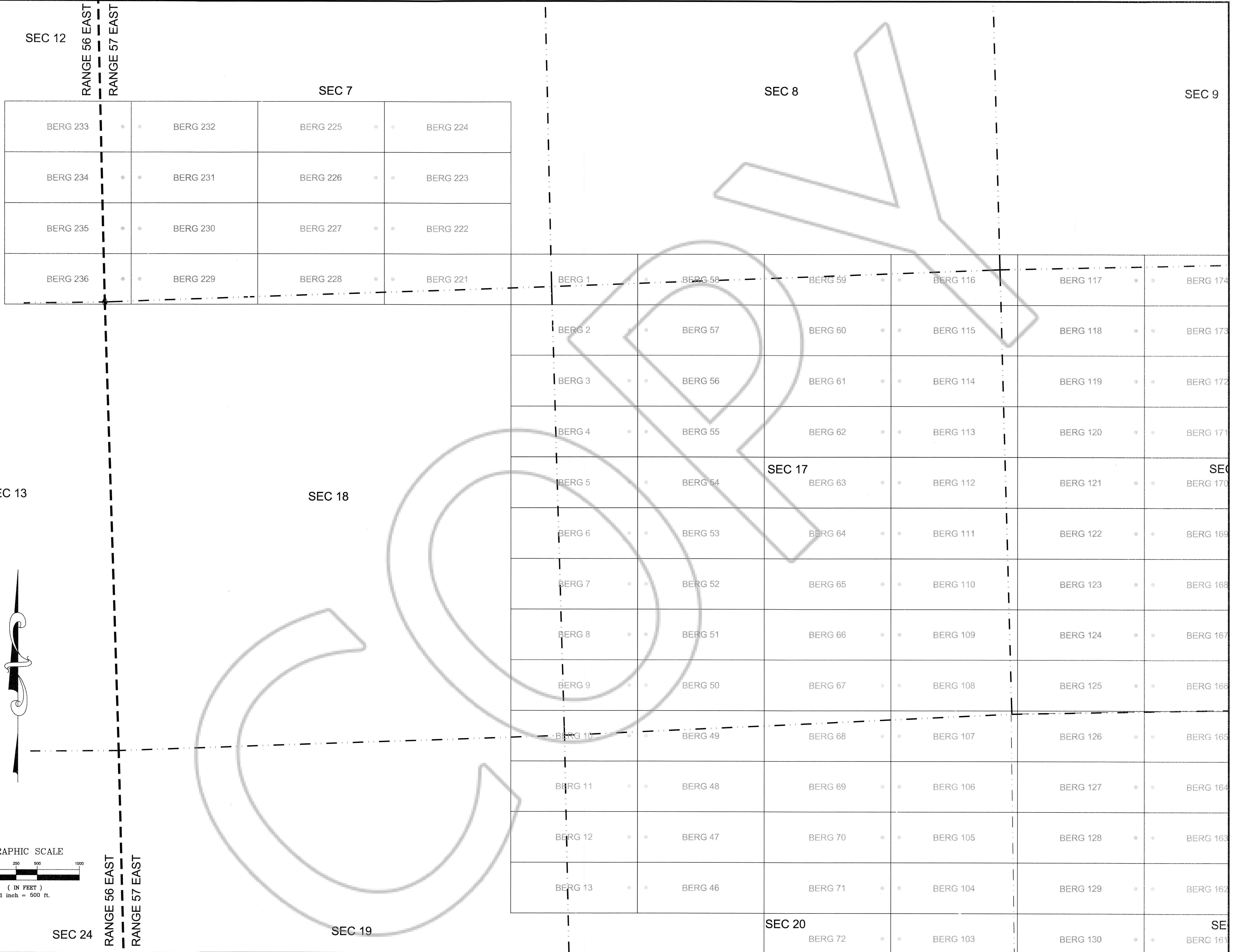
LOCATED IN
 SECTIONS 12-13 TOWNSHIP 1 NORTH, RANGE 56 EAST,
 SECTIONS 7-9, 16-21, & 28-33 TOWNSHIP 1 NORTH, RANGE 57 EAST,
 MOUNT DIABLO MERIDIAN NEVADA
 PREPARED FOR:
 SILVER INTERNATIONAL INC.
 545 SOUTH VALLEY VIEW DR.
 ST. GEORGE, UT 84770



BOUNDARY DETAIL
 NOT TO SCALE



SHEET INDEX DETAIL
 NOT TO SCALE



SEC 13

SEC 12

SEC 7

SEC 8

SEC 9

SEC 18

SEC 17

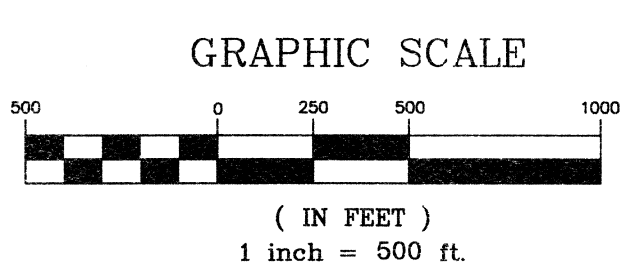
SEC 19

SEC 20

SEC 24

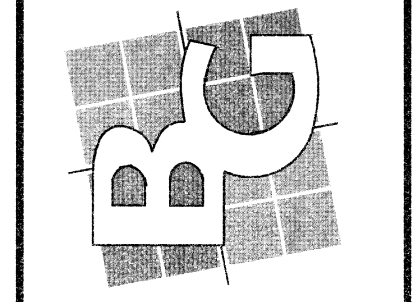
RANGE 56 EAST
RANGE 57 EAST

RANGE 56 EAST
RANGE 57 EAST



No.	Date	By	Revision

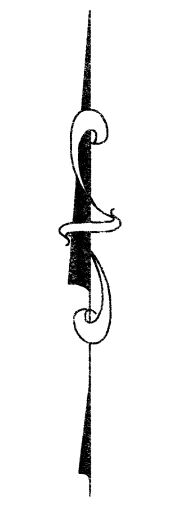
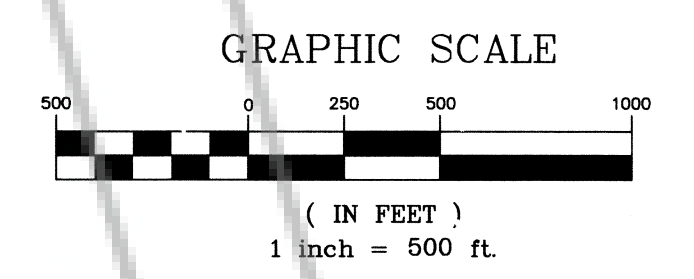
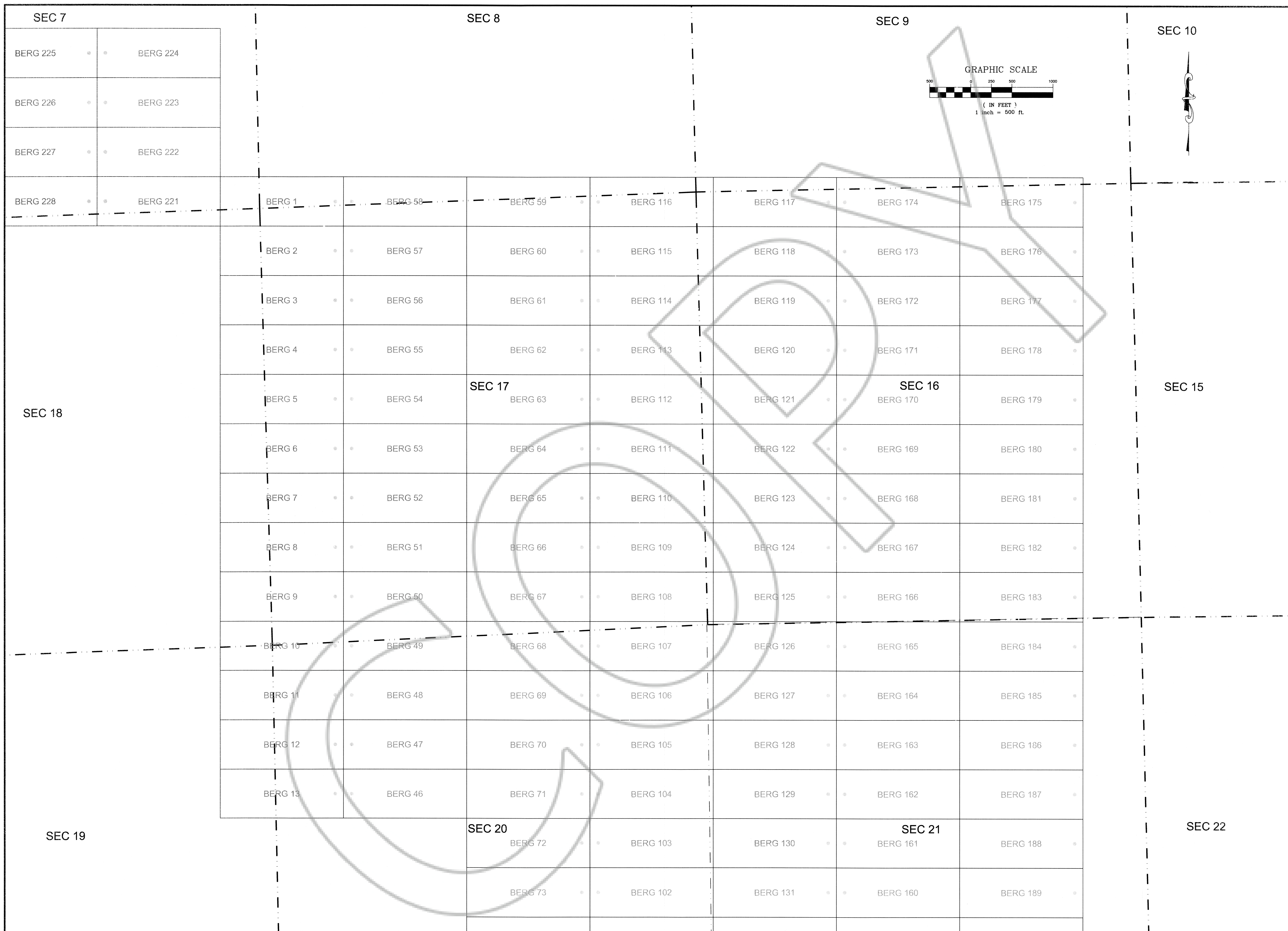
BUSH & GUDGELL, INC.
Engineers - Planners - Surveyors
205 East Tabernacle Suite #4
St. George, Utah 84770
Phone (435) 673-2337 / Fax (435) 673-3161
www.bushandgudgell.com



DATE: 04/22/2011
DRAWN: JWS
APPROVED:
SCALE:
JOB NO.: 101103

RECORD OF MINING CLAIMS
TOWNSHIP 1 N, RANGE 56-57 E
MOUNT DIABLO MERIDIAN

SHEET 2 OF 4 SHEETS
FILE: 101103

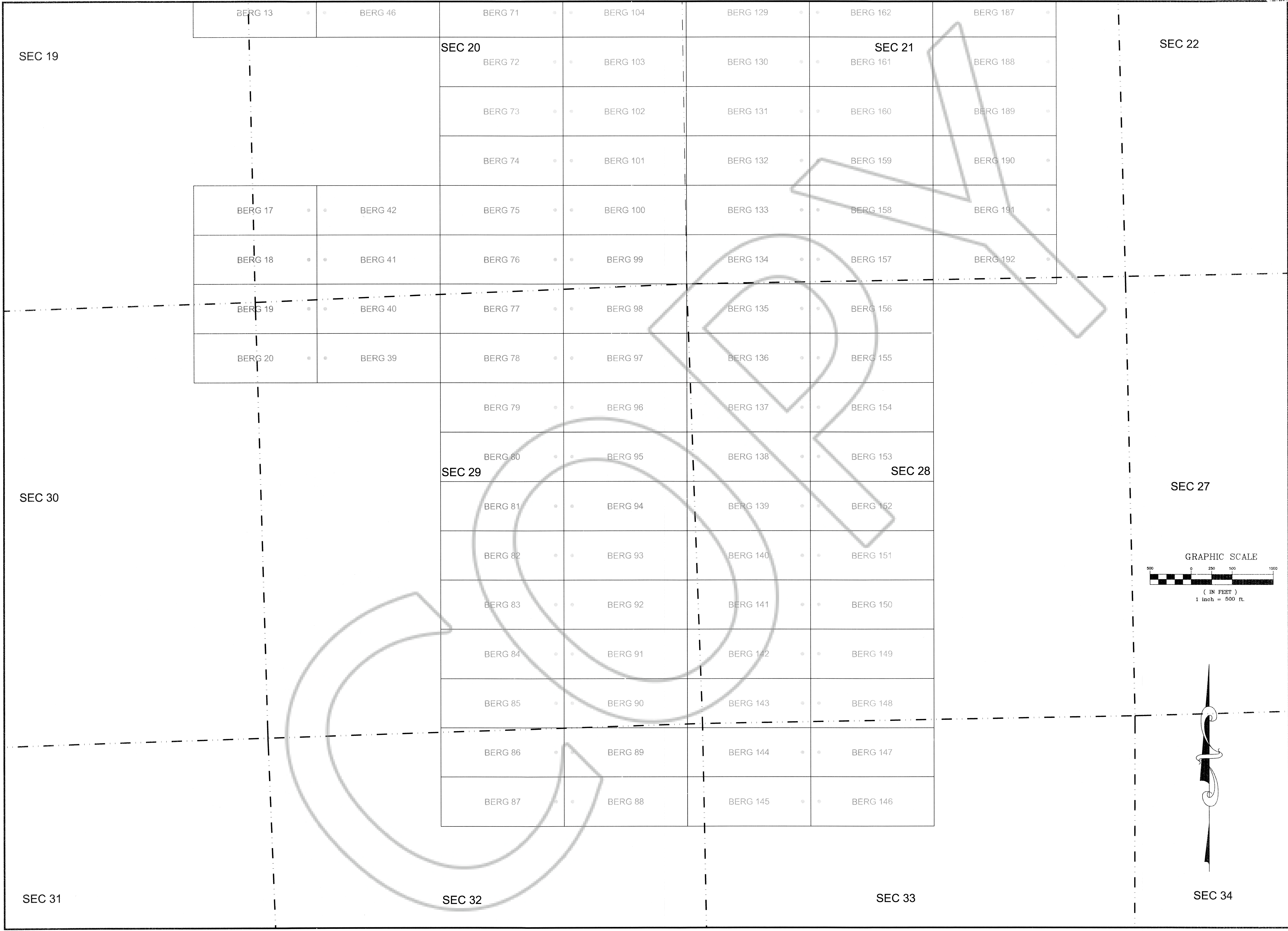


No.	Date	By	Revision

BUSH & GUDGELL, INC.
 Engineers - Planners - Surveyors
 205 East Tabernacle Suite #4
 St. George, Utah 84770
 Phone (435) 673-2337 / Fax (435) 673-3161
 www.bushandgudgell.com

DATE: 05/23/2011	DRAWN: TMS	APPROVED:	SCALE:	JOB NO.: 101103
------------------	------------	-----------	--------	-----------------

RECORD OF MINING CLAIMS
 TOWNSHIP 1 N, RANGE 56-57 E
 MOUNT DIABLO MERIDIAN



BUSH & GUDGELL, INC.
 Engineers - Planners - Surveyors
 205 East Tabernacle Suite #4
 St. George, Utah 84770
 Phone (435) 673-2337 / Fax (435) 673-3161
 www.bushandgudgell.com

DATE: 05/21/2011
 DRAWN: TMS
 APPROVED:
 SCALE:
 JOB NO.: 101103

RECORD OF MINING CLAIMS
 TOWNSHIP 1 N, RANGE 56-57 E
 MOUNT DIABLO MERIDIAN

SHEET 4 OF 4 SHEETS
 FILE: 101103

