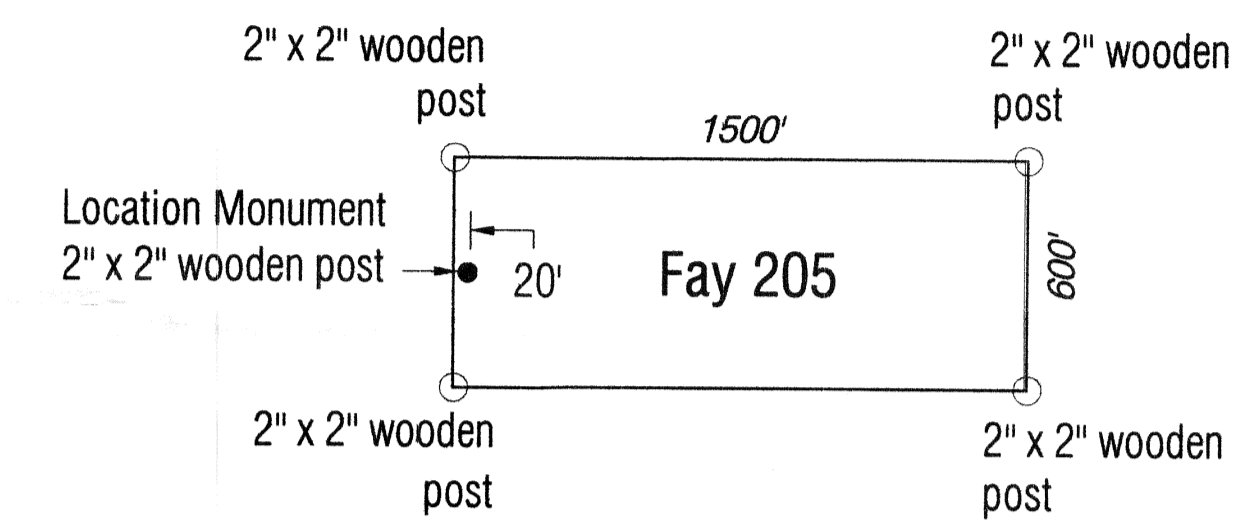
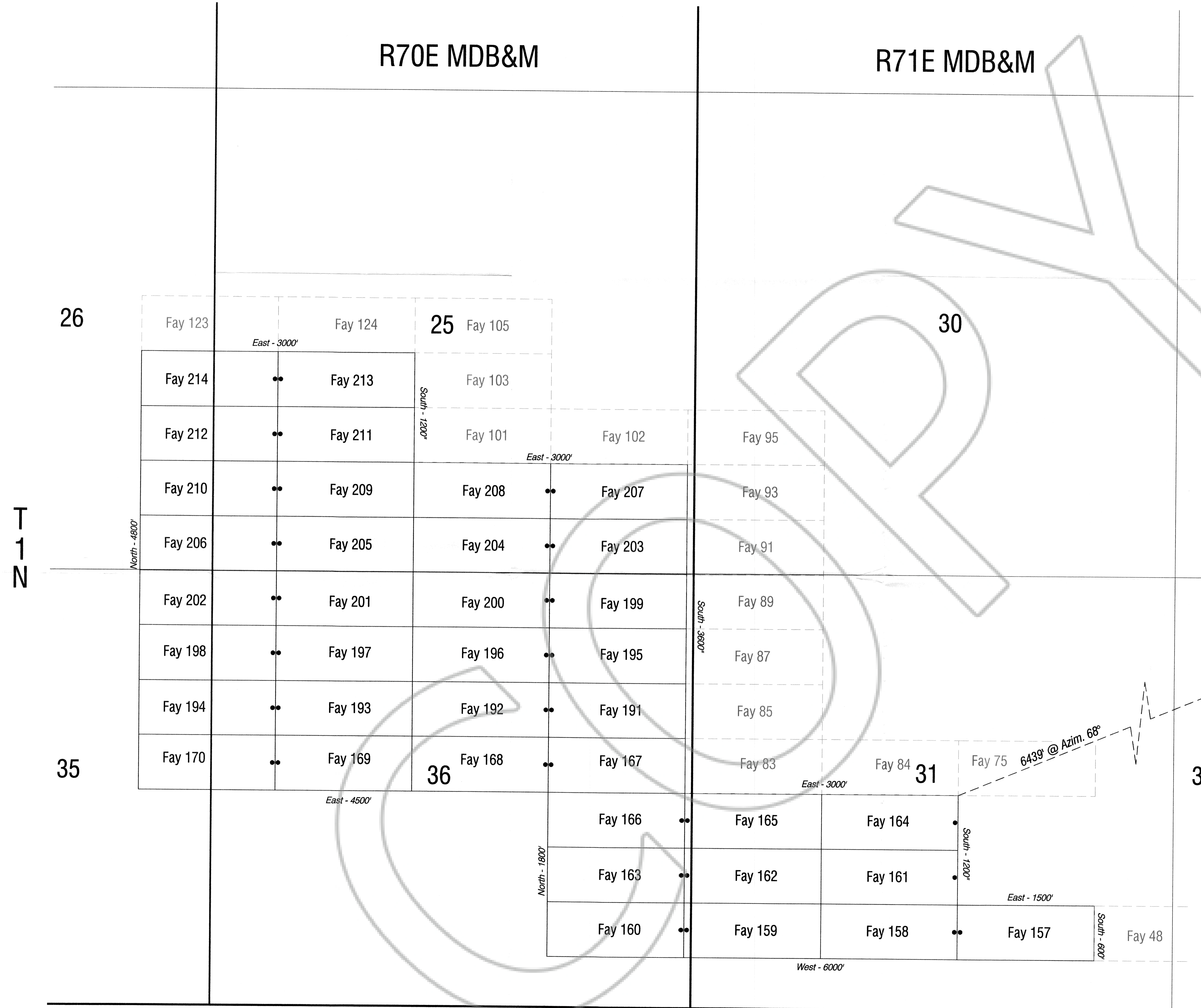


R70E MDB&M

R71E MDB&M

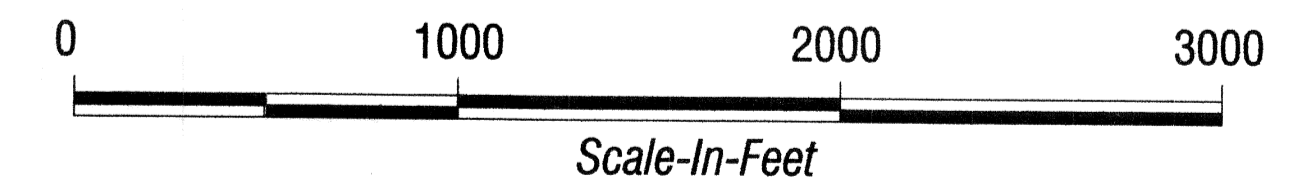
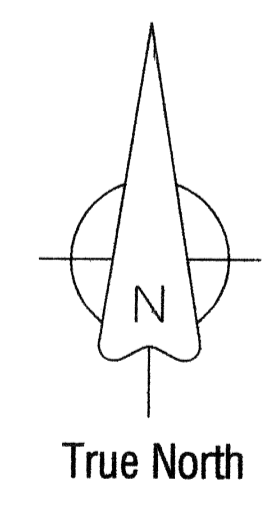


Typical Lode Claim

Location Dates:
 Fay 157 thru 170 - Dec. 11, 2010
 Fay 191 thru 214 - Dec. 11, 2010

Locator:
 Nevada High Desert Gold Corp.LLC
 2696 Colorado Blvd.
 Suite 240
 Denver, Colorado 80222

Found Brass Cap
 NE Cor., Sec. 32
 T1N-R71E MDB&M



<p>High Desert Gold Corp. 2696 Colorado Blvd. Suite 240 Denver, Colorado 80222</p>		<h2>Gold Springs Project</h2> <h3>Fay Lode Mining Claims</h3> <p>Lincoln County, Nevada</p>	
DRAWN BY: M. Montoya	DATE: 1/12/11	PROJECT NO.:	PROJECT:
GEOLOGY BY:	DATE:	Gold Springs	
LAST REVISION:	DATE:	SCALE: 1"=500'	SHEET 1 OF 1
		MINING CLAIMS	