

TIE POINT DATA:  
 THE NORTHWEST CORNER OF HT 21 LIES APPROXIMATELY  
 1,030 FEET EAST AND 425 FEET NORTH OF THE SOUTHEAST  
 CORNER OF SURVEYED SECTION 17, T.2N., R.69E., M.D.B.M.

17

16

15

14

20

23

29

28

27

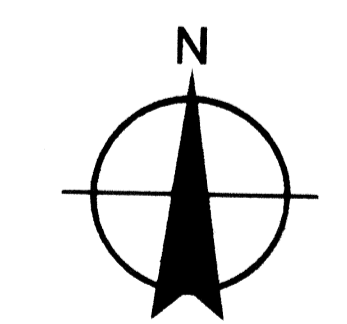
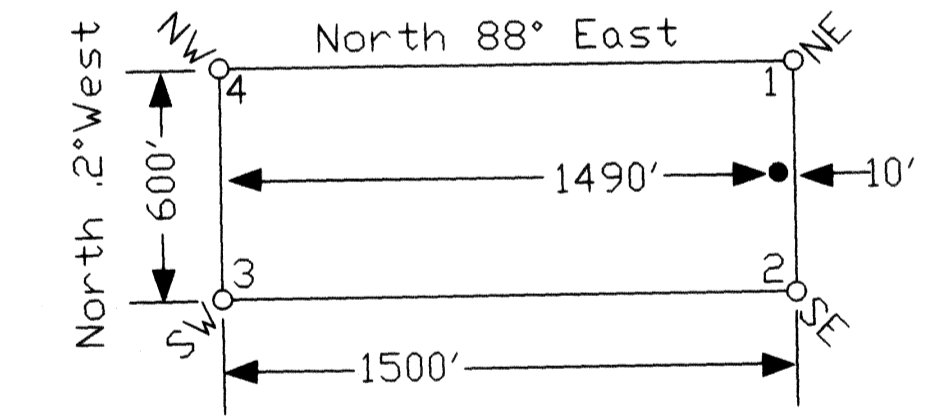
26

21	..	22	41	..	42	57	..	56	75	..	76	
23	.	HT	HT		HT	HT	.	58	77	..	78	
24	.	HT	HT		HT	HT	.	59	79	..	80	
25	.	HT	HT		HT	HT	.	60	81	..	82	
26	.	HT	HT		HT	HT	.	61	83	..	84	
27	..	28	21 43	.	HT	HT	.	62	22	85	..	86
29	..	30	45	..	44	63	..	64	87	..	88	
31	..	32	47	..	46	65	..	66	89	..	90	
33	..	34	49	..	48	67	..	68	91	..	92	
35	..	36	51	..	50	69	..	70	93	..	94	
37	..	38	53	..	52	71	..	72	95	..	96	
39	..	40	55	..	54	73	..	74	97	..	98	

EXISTING HT CLAIMS

LOCATION DATES:  
 11/17/10 - HT 21-55  
 11/18/10 - HT 56-98

TYPICAL CLAIMS



Scale 1" = 500'  
 1:6000

NOTES:  
 LOCATION MONUMENTS SET 10' FROM CLAIM END  
 CENTERLINES, UNLESS OTHERWISE NOTED.  
 LOCATION MONUMENTS AND CLAIM POSTS ARE  
 2"x2"x4' WOODEN STAKES.  
 DASHED SECTION LINES INDICATE PROJECTED SECTIONS.

 MINING SERVICES CarlinFend Sampling • Staking • Surveys	Locator: Bridgeport Gold Inc. c/o Erwin & Thompson LLP, One East Liberty Street, Ste 424, Reno, Nevada 89501 HT Lode Claims T2N R69E; Lincoln County, Nevada
	369 - 5th STREET PH: (775) 778-0668 ELKO, NV 89801 FAX: (775) 778-0687