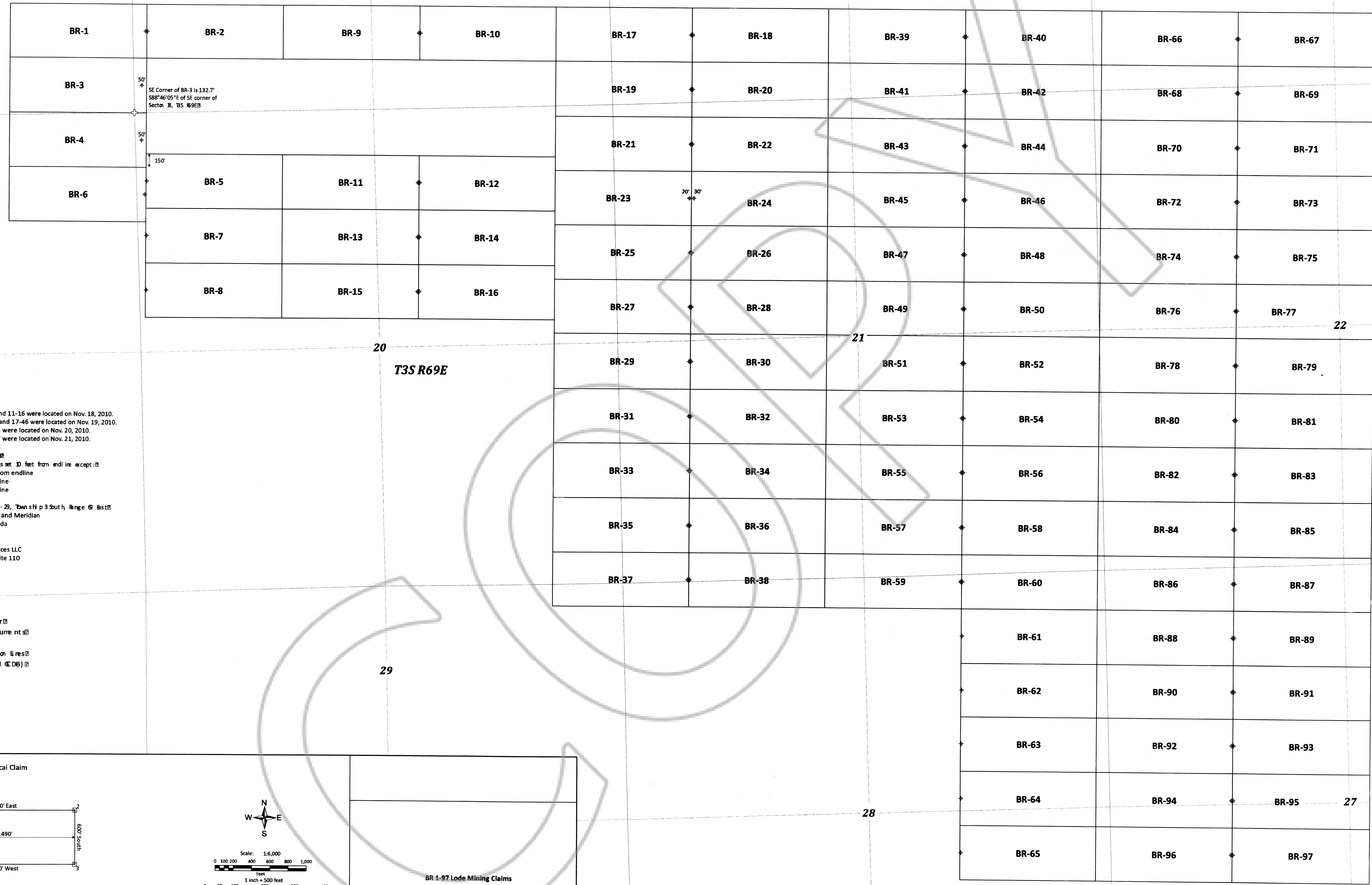


18

17

16

15



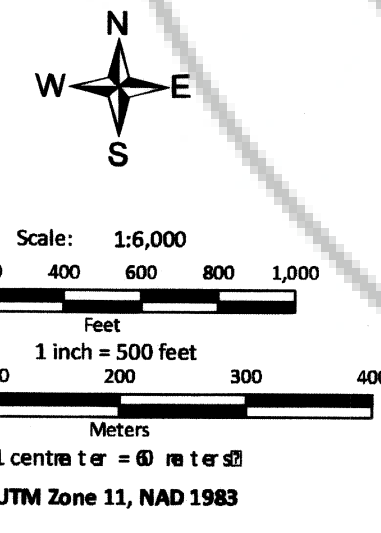
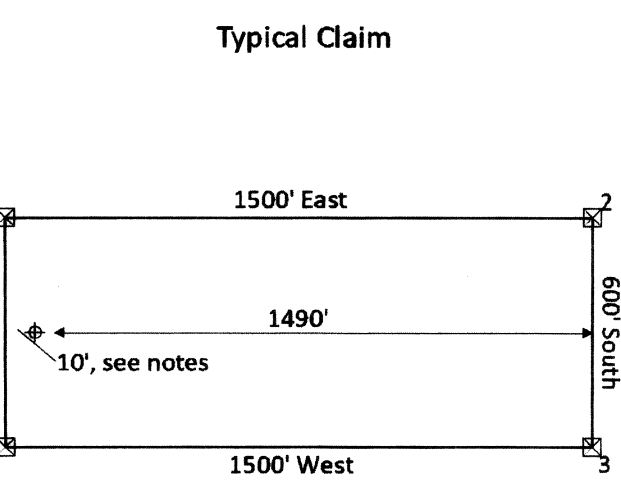
Location Dates
 BR lode claims 1-8 and 11-16 were located on Nov. 18, 2010.
 BR lode claims 9-10 and 17-46 were located on Nov. 19, 2010.
 BR lode claims 47-71 were located on Nov. 20, 2010.
 BR lode claims 72-97 were located on Nov. 21, 2010.

Location Measurements
 Location measurements are set 10 feet from endline except:
 BR-3 and BR-4: 50' from endline
 BR-23: 20' from endline
 BR-24: 30' from endline

Sectors 15-22 and 27-29, Township 3 South Range 6 East
 Mt. Diablo Base Line and Meridian
 Lincoln County, Nevada

Locator:
 Nevada Eagle Resources LLC
 1031 Railroad St., Suite 110
 Elko, NV 89801

- Legend**
- ⊕ Section corner
 - ⊕ Location measurement
 - ▭ Claims
 - ▭ Quarter Section lines
 - ▭ Sections (B.M. & D.B.)



BR 1-97 Lode Mining Claims