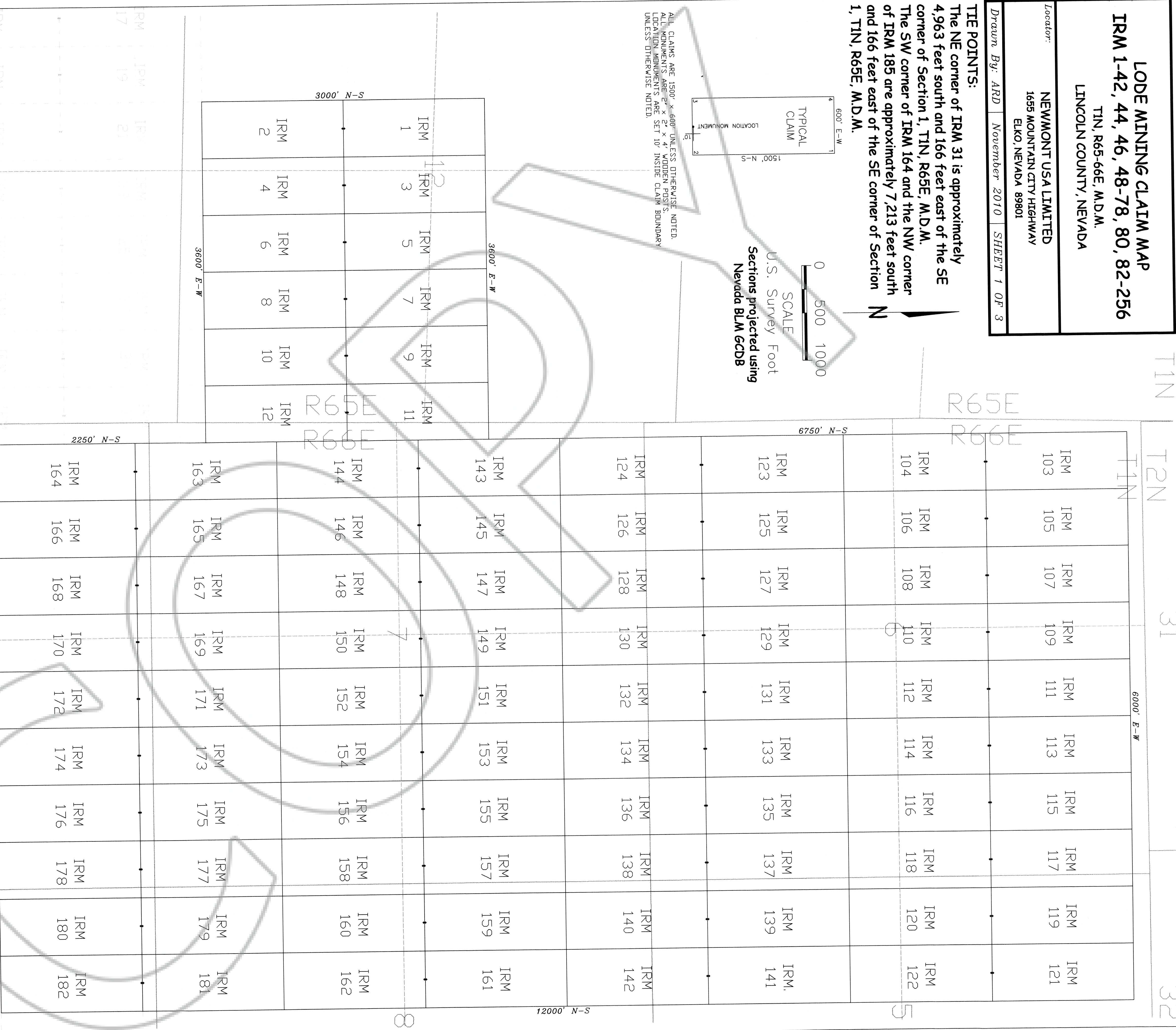
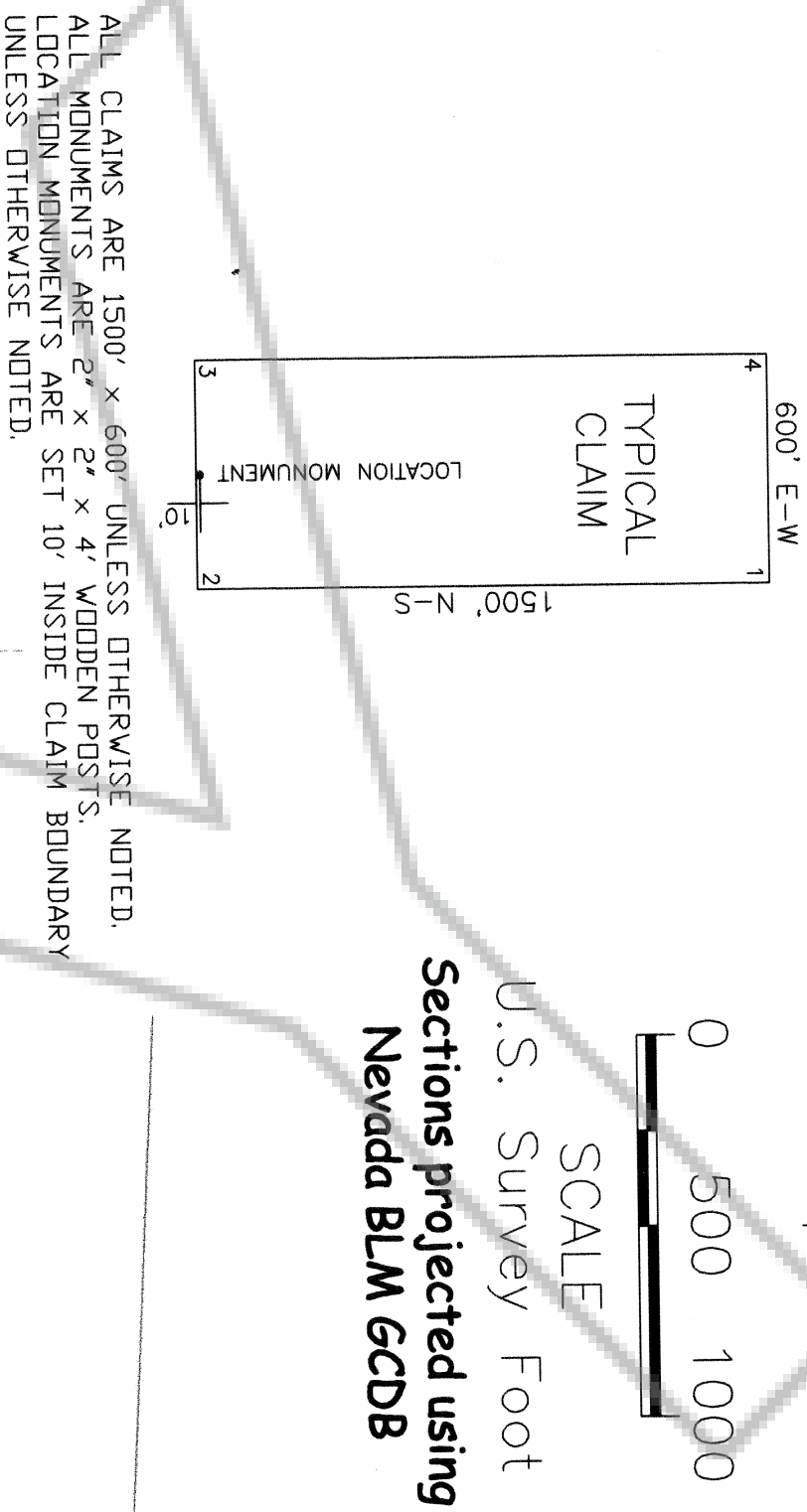


LODE MINING CLAIM MAP
IRM 1-42, 44, 46, 48-78, 80, 82-256
 TIN, R65-66E, M.D.M.
 LINCOLN COUNTY, NEVADA

Locator:
NEWMONT USA LIMITED
 1655 MOUNTAIN CITY HIGHWAY
 ELKO, NEVADA 89801

Drawn By: ARD November 2010 SHEET 1 OF 3

TIE POINTS:
 The NE corner of IRM 31 is approximately 4,963 feet south and 166 feet east of the SE corner of Section 1, TIN, R65E, M.D.M.
 The SW corner of IRM 164 and the NW corner of IRM 185 are approximately 7,213 feet south and 166 feet east of the SE corner of Section 1, TIN, R65E, M.D.M.



IRM 1-42
 IRM 44
 IRM 46
 IRM 48
 IRM 49
 IRM 50
 IRM 51
 IRM 52
 IRM 53
 IRM 54
 IRM 55
 IRM 56
 IRM 57
 IRM 58
 IRM 59
 IRM 60
 IRM 61
 IRM 62
 IRM 63
 IRM 64
 IRM 65
 IRM 66
 IRM 67
 IRM 68
 IRM 69
 IRM 70
 IRM 71
 IRM 72
 IRM 73
 IRM 74
 IRM 75
 IRM 76
 IRM 77
 IRM 78
 IRM 79
 IRM 80
 IRM 81
 IRM 82

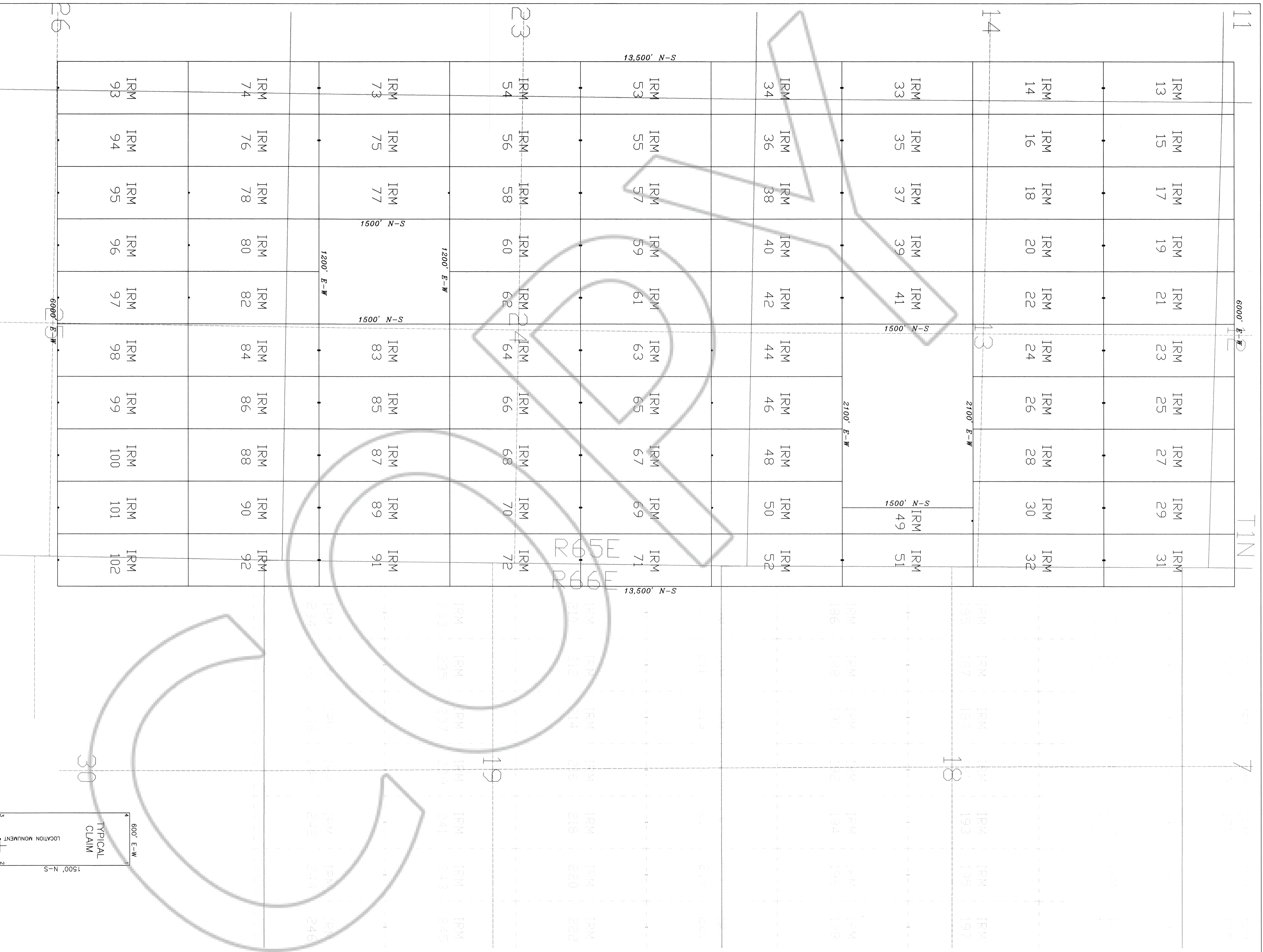
DOC # 0137466

Official Record
 Recorded & Indexed By
 Lincoln County - NV
 Leslie Boucher - Recorder
 Book - 256 Page - 0552

NOTES:
 Claim IRM 49 is 1500 feet long and 300 feet wide.

CLAIM LOCATION DATES:
 September 25, 2010: IRM 13-42, 53-66, 163-182
 September 26, 2010: IRM 1-12, 44, 46, 48, 50-52, 67-72, 143-162, 183-218
 September 27, 2010: IRM 73-76, 83-102, 107-142, 219-232, 235-256
 September 28, 2010: IRM 49, 103-106, 233-234
 November 18, 2010: IRM 77-78, 80, 82





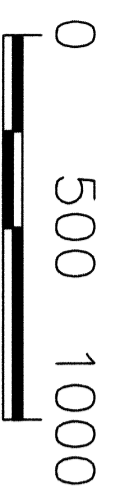
NOTES:
 Claim IRM 49 is 1500 feet long and 300 feet wide.

TIE POINTS:

The NE corner of IRM 31 is approximately 4,963 feet south and 166 feet east of the SE corner of Section 1, T1N, R65E, M.D.M.
 The SW corner of IRM 164 and the NW corner of IRM 185 are approximately 7,213 feet south and 166 feet east of the SE corner of Section 1, T1N, R65E, M.D.M.

CLAIM LOCATION DATES:

September 25, 2010: IRM 13-42, 53-66, 163-182
 September 26, 2010: IRM 1-12, 44, 46, 48, 50-52, 67-72, 143-162, 183-218
 September 27, 2010: IRM 73-76, 83-102, 107-142, 219-232, 235-256
 September 28, 2010: IRM 49, 103-106, 233-234
 November 18, 2010: IRM 77-78, 80, 82



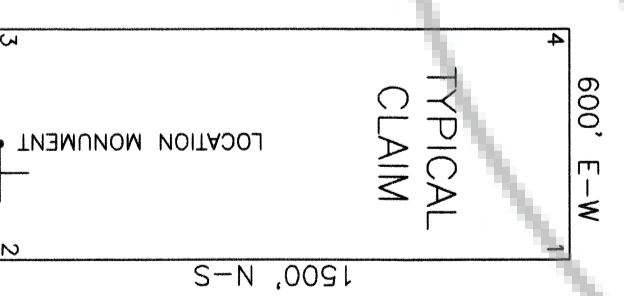
SCALE

U.S. Survey Foot

Sections projected using Nevada BLM GCD8



ALL CLAIMS ARE 1500' x 600' UNLESS OTHERWISE NOTED.
 ALL MONUMENTS ARE 2' x 2' x 4' WOODEN POSTS.
 LOCATION MONUMENTS ARE SET 10' INSIDE CLAIM BOUNDARY UNLESS OTHERWISE NOTED.

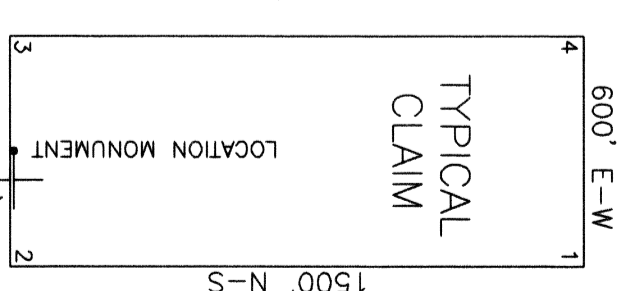


LODE MINING CLAIM MAP
 IRM 1-42, 44, 46, 48-78, 80, 82-256

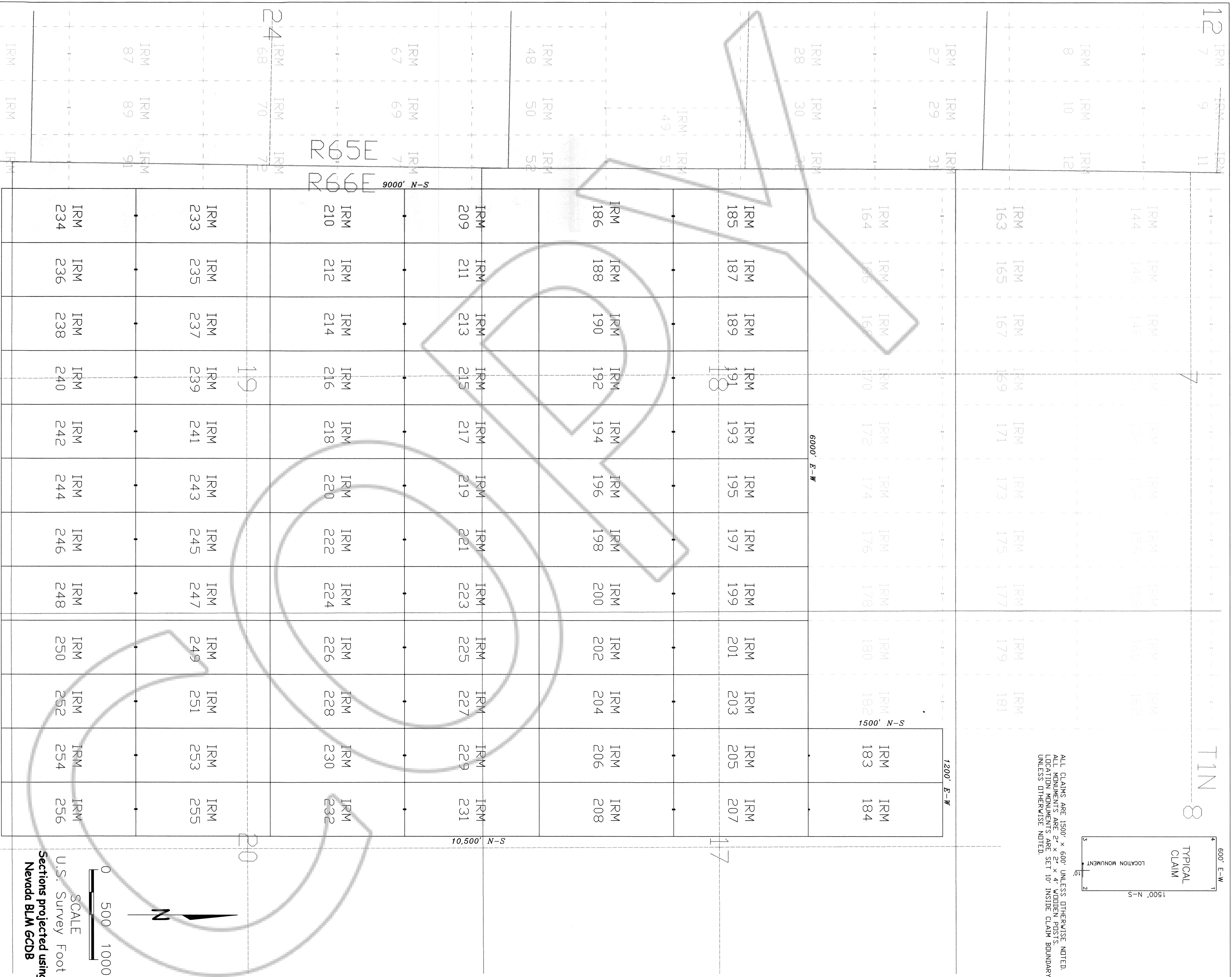
T1N, R65-66E, M.D.M.
 LINCOLN COUNTY, NEVADA

Locator: **NEWMONT USA LIMITED**
 1655 MOUNTAIN CITY HIGHWAY
 ELKO, NEVADA 89801

Drawn By: ARD November 2010 SHEET 2 OF 3



ALL CLAIMS ARE 1500' x 600' UNLESS OTHERWISE NOTED.
 ALL MONUMENTS ARE 2" x 2" x 4" WOODEN POSTS.
 LOCATION MONUMENTS ARE SET 10' INSIDE CLAIM BOUNDARY
 UNLESS OTHERWISE NOTED.



TIE POINTS:

The NE corner of IRM 31 is approximately 4,963 feet south and 166 feet east of the SE corner of Section 1, T1N, R65E, M.D.M.
 The SW corner of IRM 164 and the NW corner of IRM 185 are approximately 7,213 feet south and 166 feet east of the SE corner of Section 1, T1N, R65E, M.D.M.

CLAIM LOCATION DATES:

September 25, 2010: IRM 13-42, 53-66, 163-182
 September 26, 2010: IRM 1-12, 44, 46, 48, 50-52, 67-72, 143-162, 183-218
 September 27, 2010: IRM 73-76, 83-102, 107-142, 219-232, 235-256
 September 28, 2010: IRM 49, 103-106, 233-234
 November 18, 2010: IRM 77-78, 80, 82

NOTES:

Claim IRM 49 is 1500 feet long and 300 feet wide.



0137466 12/13/2010

LODE MINING CLAIM MAP
IRM 1-42, 44, 46, 48-78, 80, 82-256
 T1N, R65-66E, M.D.M.
 LINCOLN COUNTY, NEVADA

Locator: **NEWMONT USA LIMITED**
 1655 MOUNTAIN CITY HIGHWAY
 ELKO, NEVADA 89801

Drawn By: **ARD** November 2010 **SHEET 3 OF 3**