

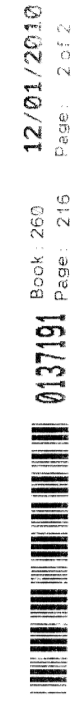




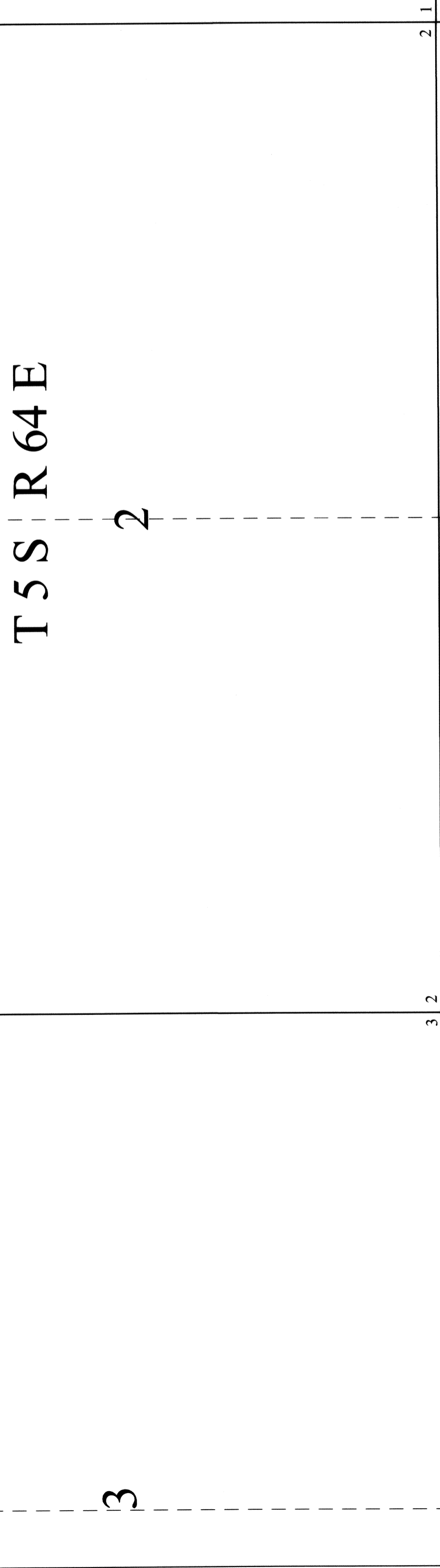
T 5 S R 64 E

2

1



Book 205  
Page 416  
Date 2/11



LC 178	LC 186	LC 194
LC 179	LC 187	LC 195
LC 180	LC 188	LC 196
LC 181	LC 189	LC 197
LC 182	LC 190	LC 198
LC 183	LC 191	LC 199
LC 184	LC 192	LC 200
LC 185	LC 193	LC 201
		LC 202
		LC 203
		LC 204
		LC 205
		LC 206
		LC 207
		LC 208
		LC 209
		LC 210

T 5 S R 64 E

23

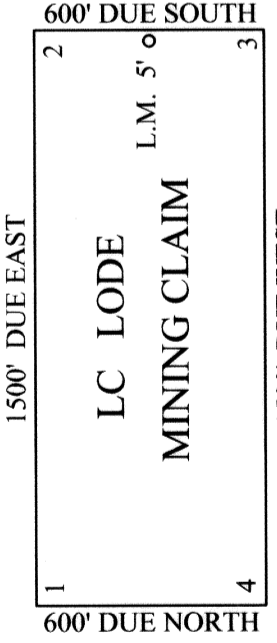
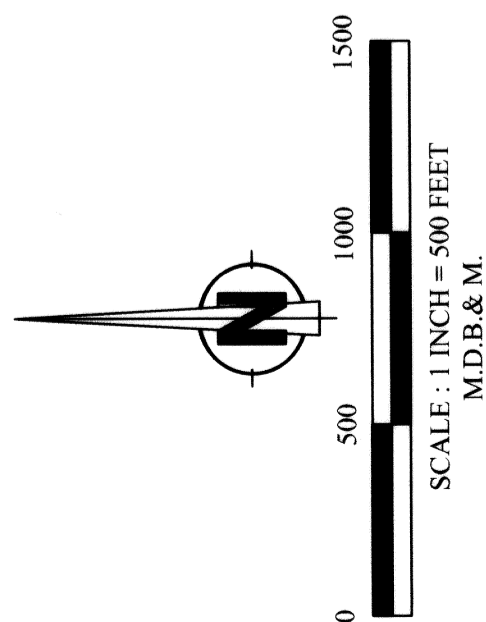
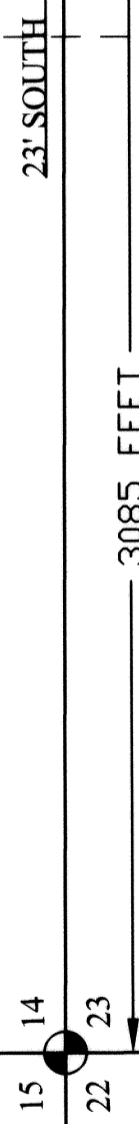
24

22

15

14

13



TYPICAL CLAIM & CORNER NUMBERS

NOTES:

SECTION LINES ARE CONSTRUCTED FROM BLM (G.C.D.B.)  
 ALL CLAIMS ARE 600 FEET WIDE BY 1500 FEET LONG UNLESS NOTED.  
 ALL LOCATION MONUMENTS SET IN 5 FEET FROM CLAIM END CENTER UNLESS NOTED.  
 ALL LOCATION AND CORNER MONUMENTS ARE 1.5" X 1.5" X 4" WOOD POST.

INDICATES A FOUND SECTION CORNER.

TIE POINT: FROM THE SE CORNER OF SECTION 15, T 5 S, R 64 E, M.D.B.&M. BEAR DUE EAST 3085 FEET AND SOUTH 23 FEET TO THE SW CORNER OF LC 210.

LOCATION DATE:  
SEPTEMBER 06, 2010 ----- LC 178-210

DISCOVER, LOCATOR, AND CLAIMANT:  
 BUENA VISTA MINERALS INC.  
 (a Nevada Corporation)  
 1 East Liberty St., Suite 424 Reno, NV 89501

LC (178-210) LODE MINING CLAIMS  
 SECTIONS 11, 14 & 23 T5S, R64E, M.D.B.&M.

LINCOLN COUNTY, NEVADA

MNS

SHEET 2 OF 2