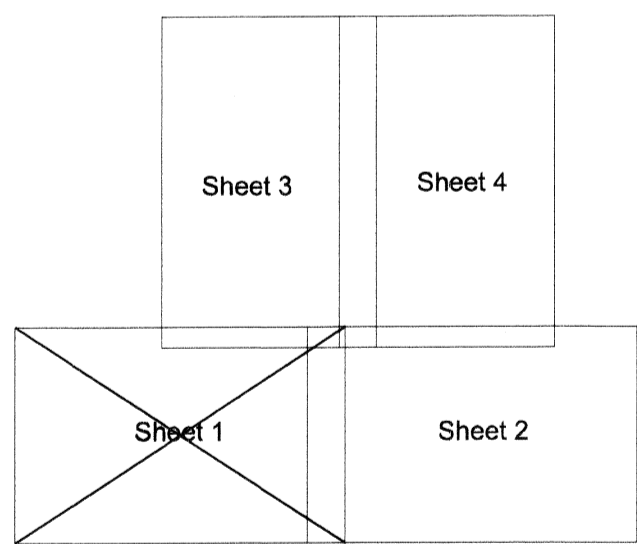


LOCATION DATES:
 LP 1-25,35-46,62-73,88-90,114-116 OCTOBER 23, 2010
 LP 91-99,117-124,142-153,174-184 OCTOBER 24, 2010
 LP 26-34,53-61,210-219,245-254,283-289 OCTOBER 25, 2010
 LP 47-52,74-87,100-113 OCTOBER 26, 2010
 LP 171-173 OCTOBER 27, 2010
 LP 242-244,281,282 OCTOBER 28, 2010
 LP 125-141,154-170 OCTOBER 29, 2010
 LP 185-200,220-241,255-258,290-293,318-321 OCTOBER 30, 2010
 LP 269-280,306-317 OCTOBER 31, 2010
 LP 259-268,294-301,303-305,322,323 NOVEMBER 1, 2010
 LP 324-341 NOVEMBER 2, 2010
 LPA 201-206 OCTOBER 30, 2010
 LPA 207-209 OCTOBER 28, 2010

3

EXPLANATION

- + Found PLS Monument
- Projected Section Lines
- Lode Mining Claim Monument



Sheet 1 of 4

LP LODGE MINING CLAIMS

CLAIM MAP

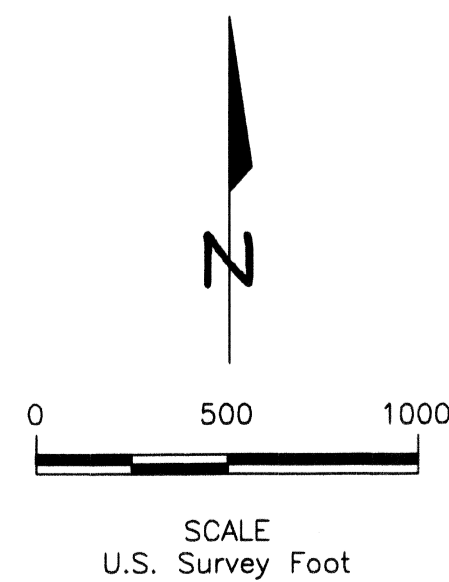
T3&4S, R58&59E, MDBM
 LINCOLN COUNTY NEVADA

AURION RESOURCES (US) LLC
 2711 Centerville Road, Suite 400
 WILMINGTON, DELAWARE 19808

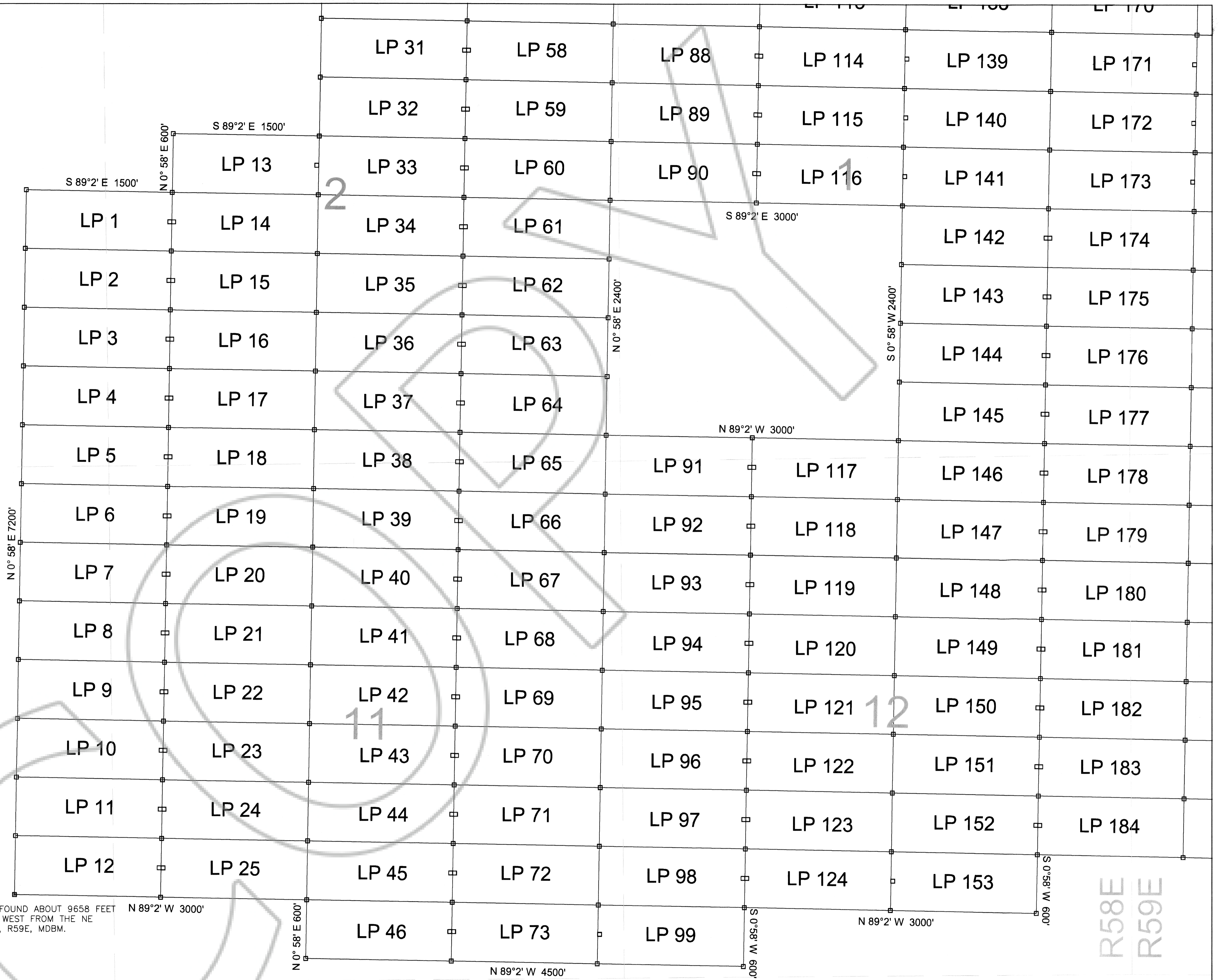
Drawn By: RBL Date: November 2010

AutoCad 2010 Drawing File: LP Claims County.DWG

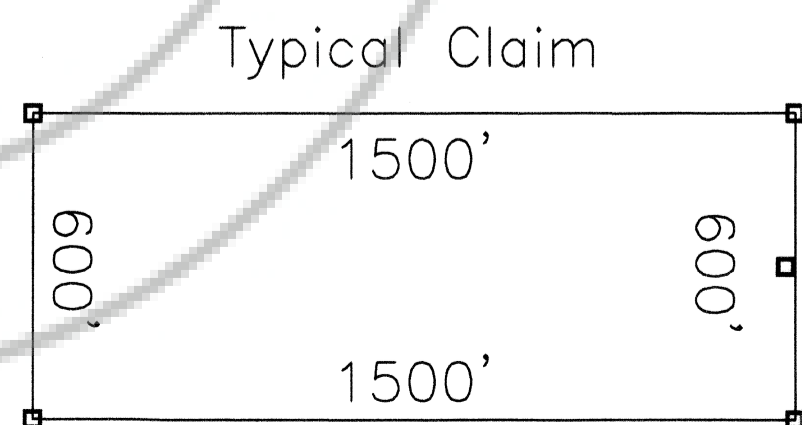
Survey and Map by:
 LYMAN EXPLORATION & SURVEYING OUTFIT
 612 West 1635 North, Suite 101, Clinton, UT 84015
 (801)540-0317



10



NOTE: THE SW COR. LP 12 IS FOUND ABOUT 9658 FEET SOUTH AND 22059 FEET WEST FROM THE NE CORNER OF SEC. 5, T4S, R59E, MDBM.



Monuments are 2X2 Wood Posts

Location Monuments are 10' from claim endline

LP CLAIMS ARE TIED TO THE NE CORNER OF SECTION 5, T4S, R59E, MDBM.

R58E
 R59E
 T4S

DOC # 0137095
 11/22/2010 04:05 PM
Official Record
 Recording requested by:
 AURION RESOURCES (US) LLC
 Lincoln County - NV
 Leslie Boucher - Recorder
 Fee: \$5,104.00 Page 1 of 4
 RPTT Recorded By: LB
 Book-259 Page-0855



0137095

LOCATION DATES:
 LP 1-25,35-46,62-73,88-90,114-116 OCTOBER 23, 2010
 LP 91-99,117-124,142-153,174-184 OCTOBER 24, 2010
 LP 26-34,53-61,210-219,245-254,283-289 OCTOBER 25, 2010
 LP 47-52,74-87,100-113 OCTOBER 26, 2010
 LP 171-173 OCTOBER 27, 2010
 LP 242-244,281,282 OCTOBER 28, 2010
 LP 125-141,154-170 OCTOBER 29, 2010
 LP 185-200,220-241,255-258,290-293,318-321 OCTOBER 30, 2010
 LP 269-280,306-317 OCTOBER 31, 2010
 LP 259-268,294-301,303-305,322,323 NOVEMBER 1, 2010
 LP 324-341 NOVEMBER 2, 2010
 LPA 201-206 OCTOBER 30, 2010
 LPA 207-209 OCTOBER 28, 2010

LP 170	LPA 205	LP 240	LP 275	LP 312
LP 171	LPA 206	LP 241	LP 276	LP 313
LP 172	LPA 207	LP 242	LP 277	LP 314
LP 173	LPA 208	LP 243	LP 278	LP 315
LP 174	LP 209	LP 244	LP 279	LP 316
LP 175	LP 210	LP 245	LP 280	LP 317
LP 176	LP 211	LP 246	LP 281	
LP 177	LP 212	LP 247	LP 282	
LP 178	LP 213	LP 248	LP 283	
LP 179	LP 214	LP 249	LP 284	
LP 180	LP 215	LP 250	LP 285	
LP 181	LP 216	LP 251	LP 286	
LP 182	LP 217	LP 252	LP 287	
LP 183	LP 218	LP 253	LP 288	
LP 184	LP 219	LP 254	LP 289	

N 89°2' W 1500'

NOTE: THE SE COR. LP 317 IS FOUND ABOUT 3965 FEET SOUTH AND 3960 FEET WEST FROM THE NE CORNER OF SEC. 5, T4S, R59E, MDBM.

S 0°58' W 5400'

N 89°2' W 6000'

S 0°58' W 600'

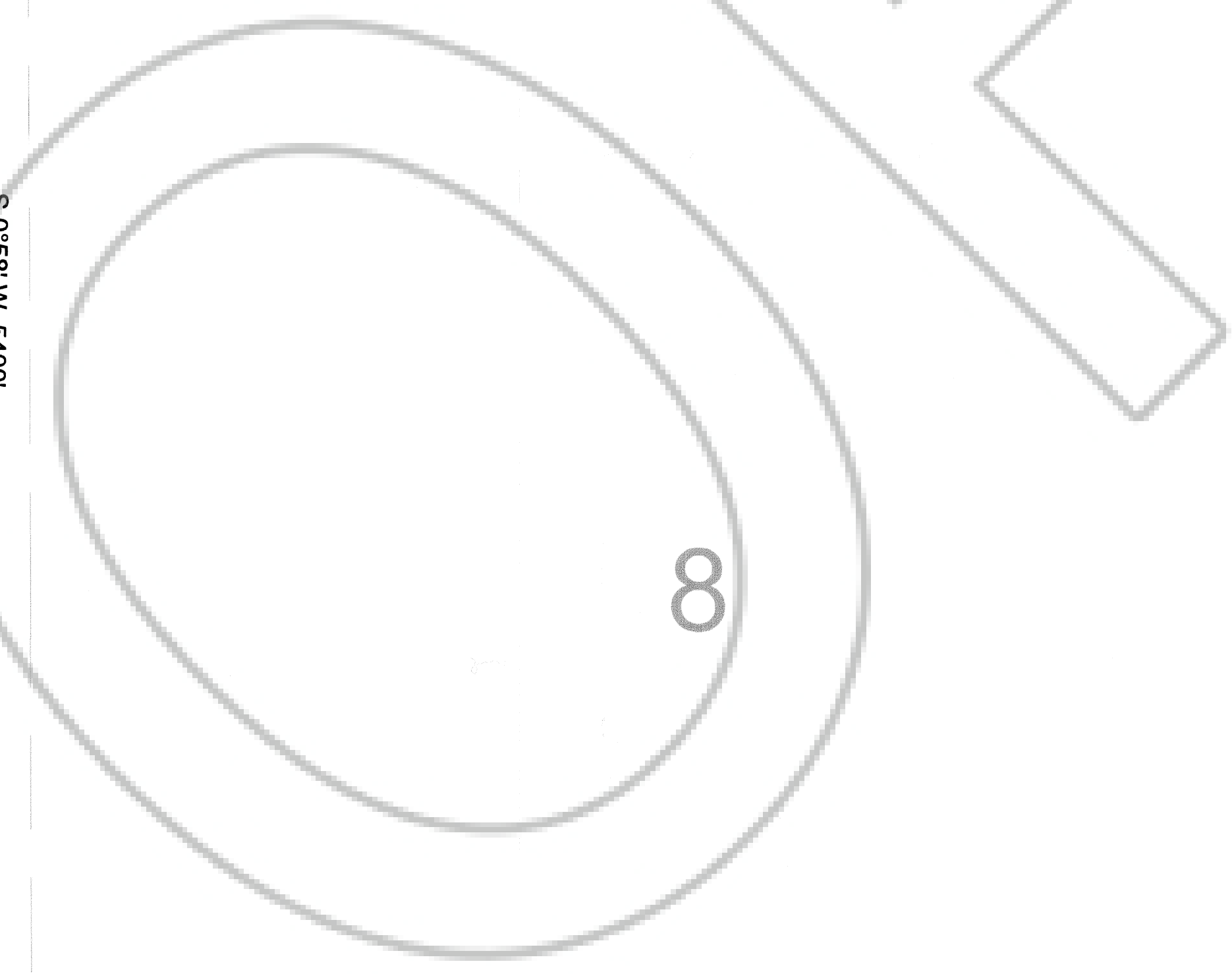
R58E
R59E
T4S

R59

in mound of Stone
4 Notches on West Side

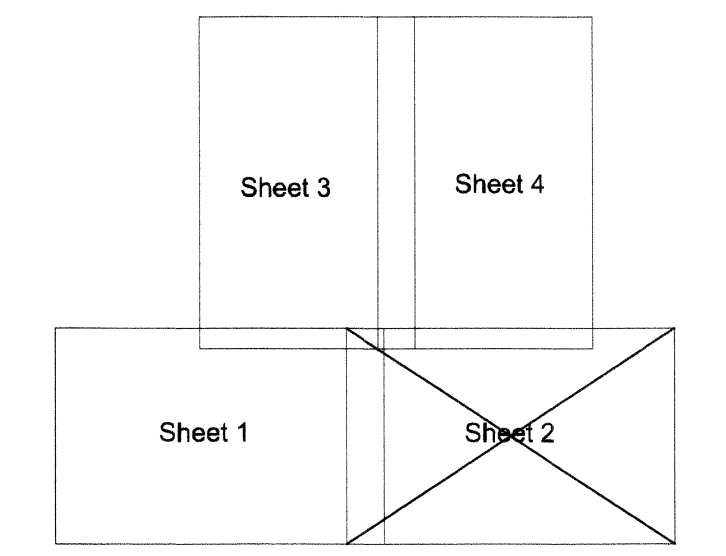
5

Found Limestone Rock
in Mound of Stone



EXPLANATION

- Found PLS Monument
- Projected Section Lines
- Lode Mining Claim Monument



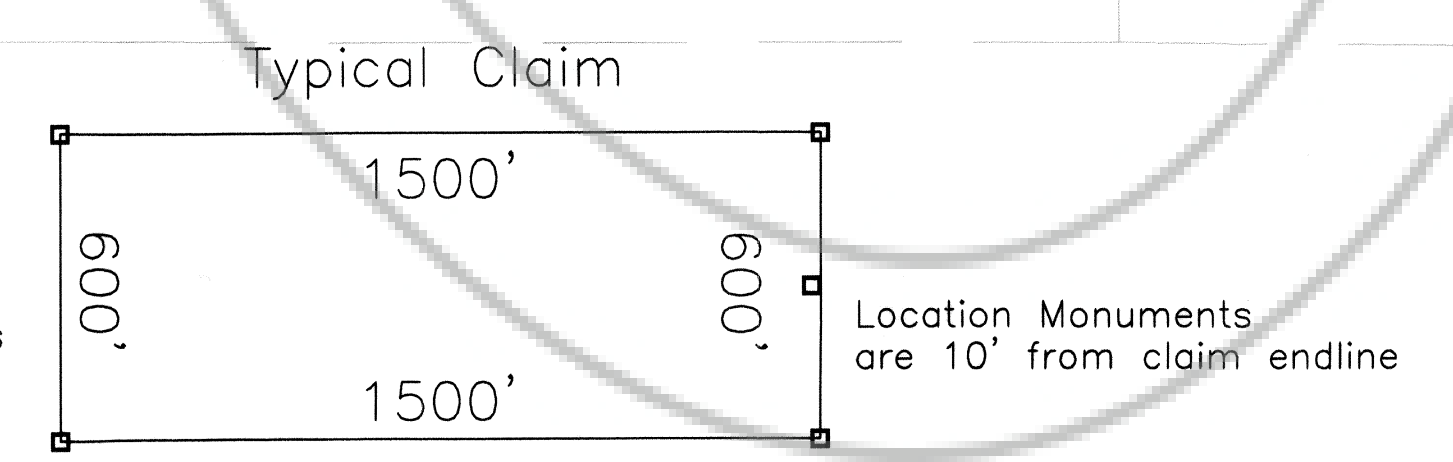
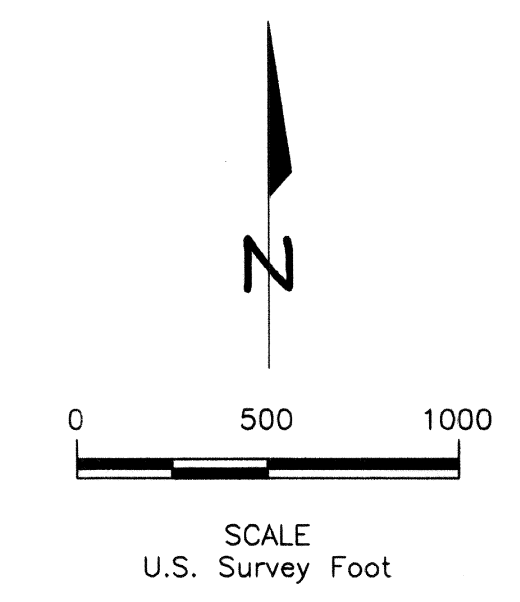
Sheet 2 of 4

LP LODE MINING CLAIMS

CLAIM MAP
 T3&4S, R58&59E, MDBM
 LINCOLN COUNTY NEVADA
 AURION RESOURCES (US) LLC
 2711 Centerville Road, Suite 400
 WILMINGTON, DELAWARE 19808

Drawn By: RBL Date: November 2010
 AutoCad 2010 Drawing File: LP Claims County.DWG
 Survey and Map by:
 LYMAN EXPLORATION & SURVEYING OUTFIT
 612 West 1635 North, Suite 101, Clinton, UT 84015
 (801)540-0317

LP CLAIMS ARE TIED TO THE NE CORNER OF SECTION 5, T4S, R59E, MDBM.



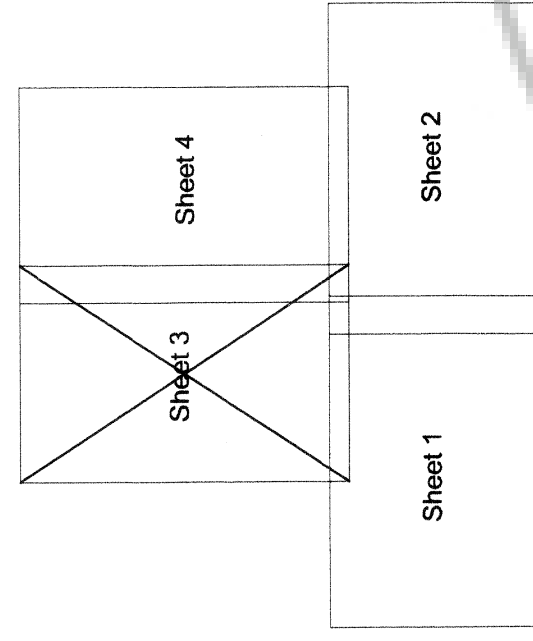
LP LODE MINING CLAIMS

CLAIM MAP

T3&4S, R58&59E, MDBM
 LINCOLN COUNTY NEVADA
 AURION RESOURCES (US) LLC
 2711 Centerville Road, Suite 400
 WILMINGTON, DELAWARE 19808

Drawn By: RBL Date: November 2010
 AutoCad 2010 Drawing File: LP Claims County.DWG
 Survey and Map by:
 LYMAN EXPLORATION & SURVEYING OUTFIT
 612 West 1635 North, Suite 101, Clinton, UT 84015
 (801)540-0317

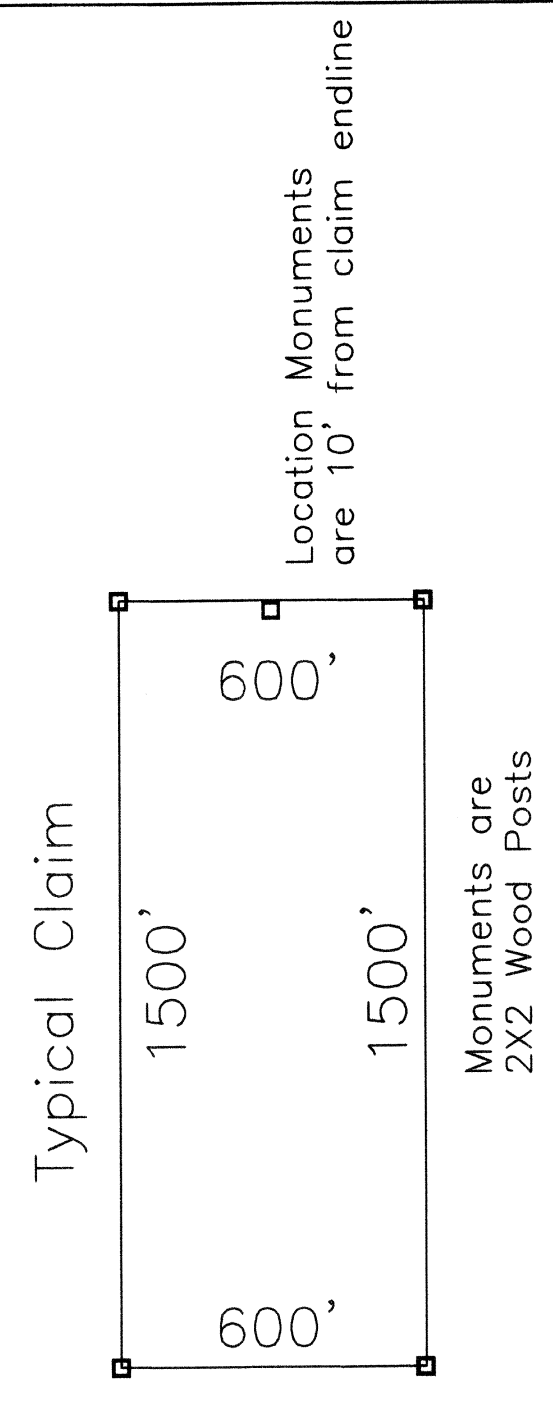
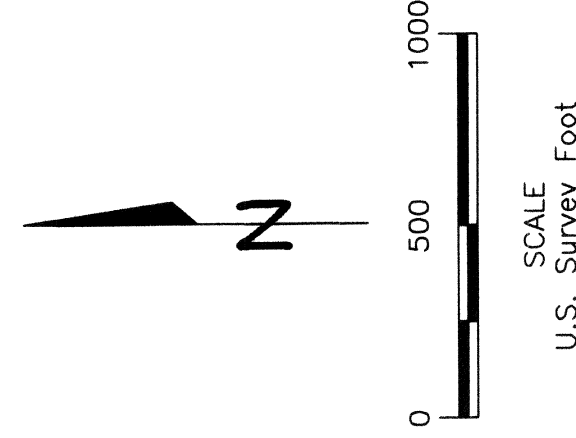
Sheet 3 of 4



EXPLANATION

- +** Found PLS Monument
- - -** Projected Section Lines
- Lode Mining Claim Monument

LP CLAIMS ARE TIED TO THE NE CORNER OF SECTION 5, T4S, R59E, MDBM.



24

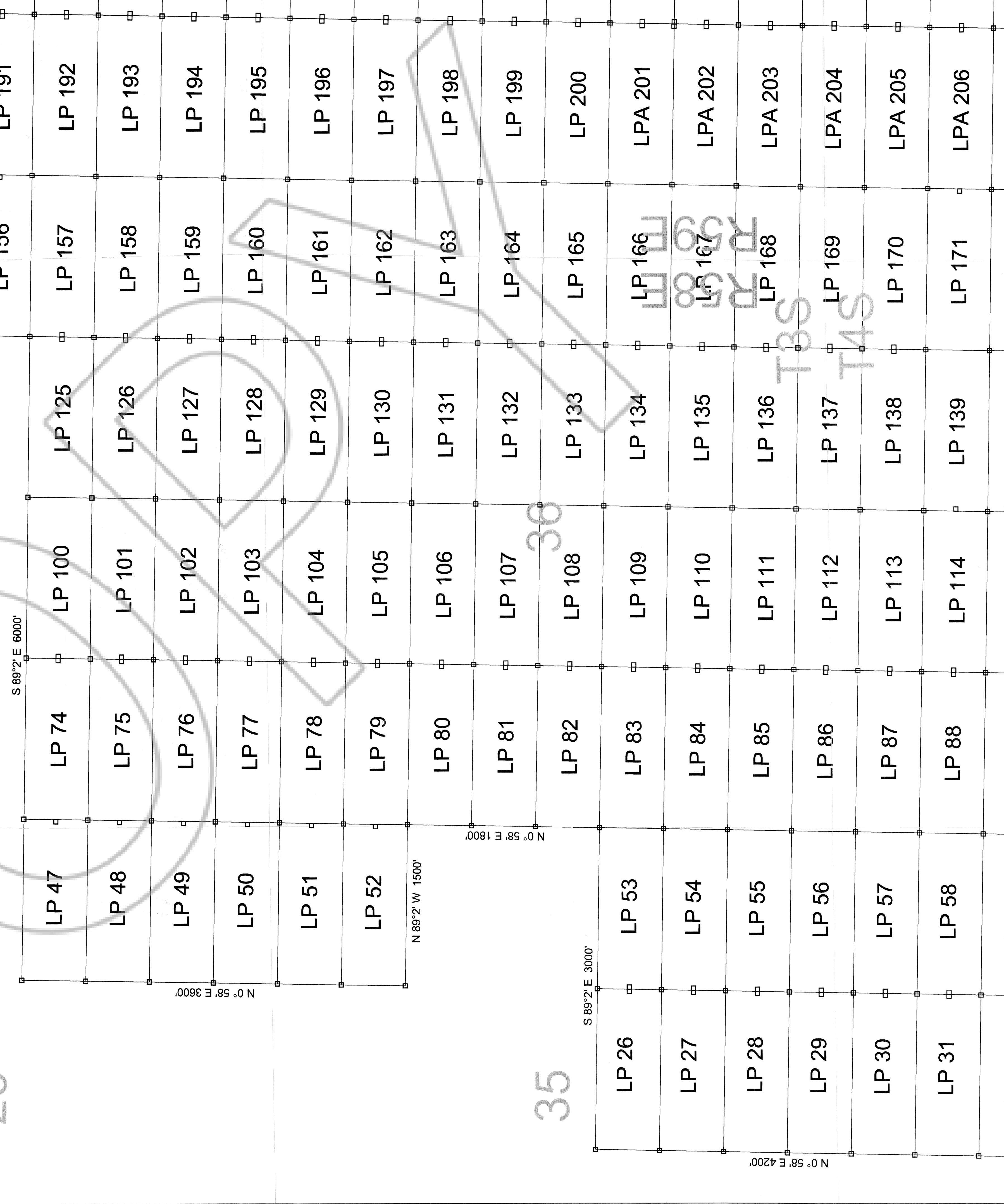
23

LOCATION DATES:
 LP 1-25,35-46,62-73,88-90,114-116 OCTOBER 23, 2010
 LP 91-99,117-124,142-153,174-184 OCTOBER 24, 2010
 LP 26-34,53-61,210-219,245-254,283-289 OCTOBER 25, 2010
 LP 47-52,74-87,100-113 OCTOBER 26, 2010
 LP 171-173 OCTOBER 27, 2010
 LP 242-244,281,282 OCTOBER 28, 2010
 LP 125-141,154-170 OCTOBER 29, 2010
 LP 185-200,220-241,255-258,290-293,318-321 OCTOBER 30, 2010
 LP 269-280,306-317 OCTOBER 31, 2010
 LP 259-268,294-301,303-305,322,323 NOVEMBER 1, 2010
 LP 324-341 NOVEMBER 2, 2010
 LPA 201-206 OCTOBER 30, 2010
 LPA 207-209 OCTOBER 28, 2010

NOTE: THE NW COR. LP 47 IS FOUND ABOUT 7663 FEET NORTH AND 17264 FEET WEST FROM THE NE CORNER OF SEC. 5, T4S, R59E, MDBM.

25

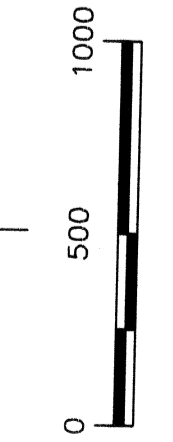
26



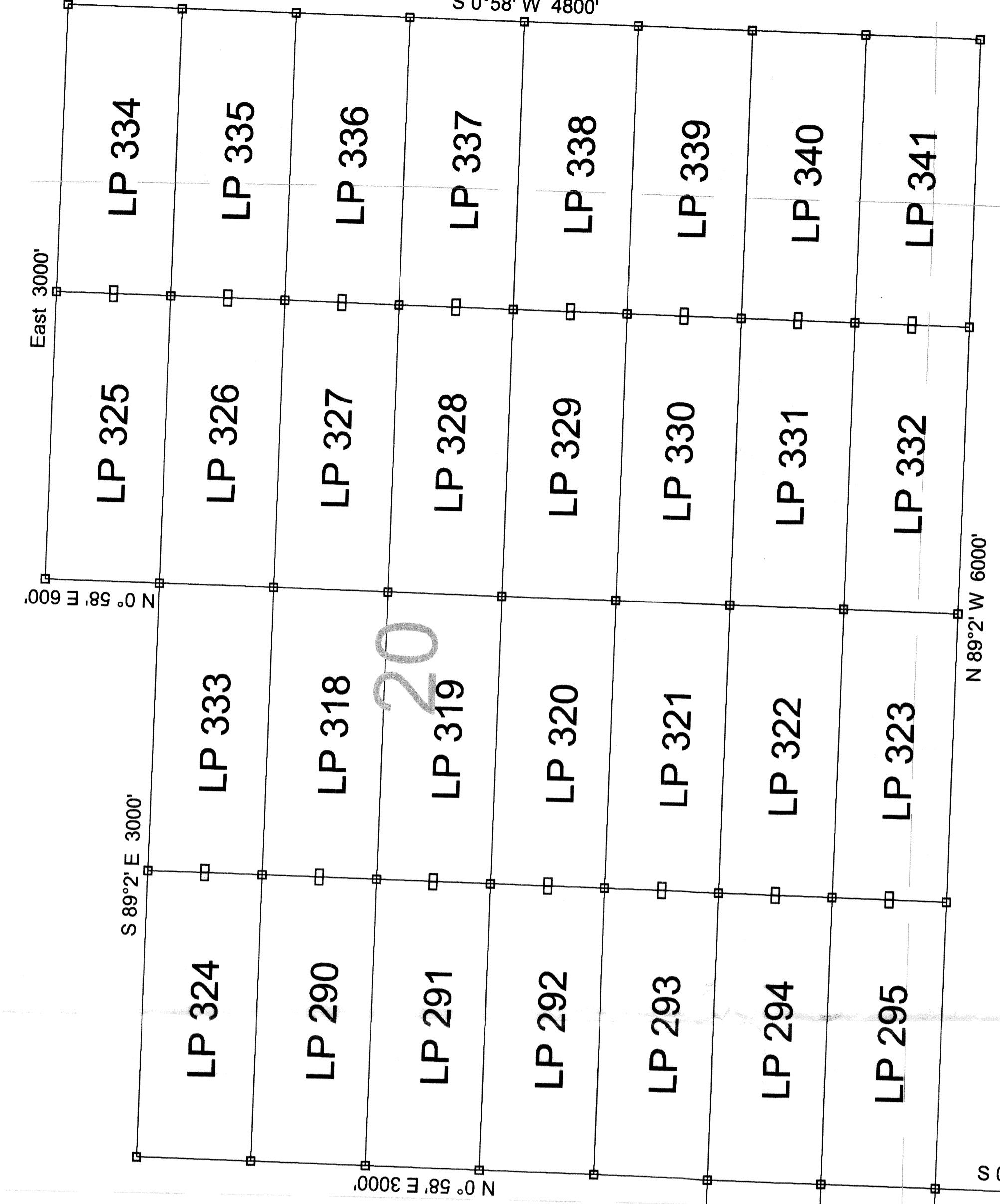
LP LODE MINING CLAIMS

CLAIM MAP
 T3&4S, R58&59E, MDBM
 LINCOLN COUNTY NEVADA
 AURION RESOURCES (US) LLC
 2711 Centerville Road, Suite 400
 WILMINGTON, DELAWARE 19808
 Drawn By: RBL Date: November 2010
 AutoCad 2010 Drawing File: LP Claims County.DWG
 Survey and Map by:
 LYMAN EXPLORATION & SURVEYING OUTFIT
 612 West 1635 North, Suite 101, Clinton, UT 84015
 (801)540-0317

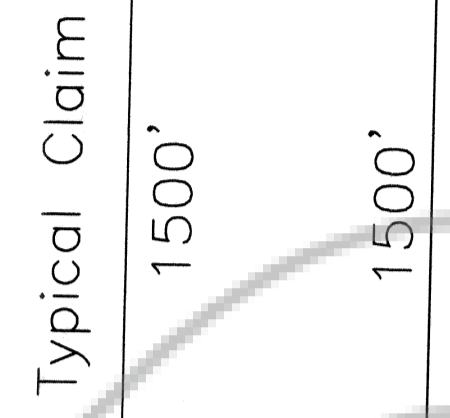
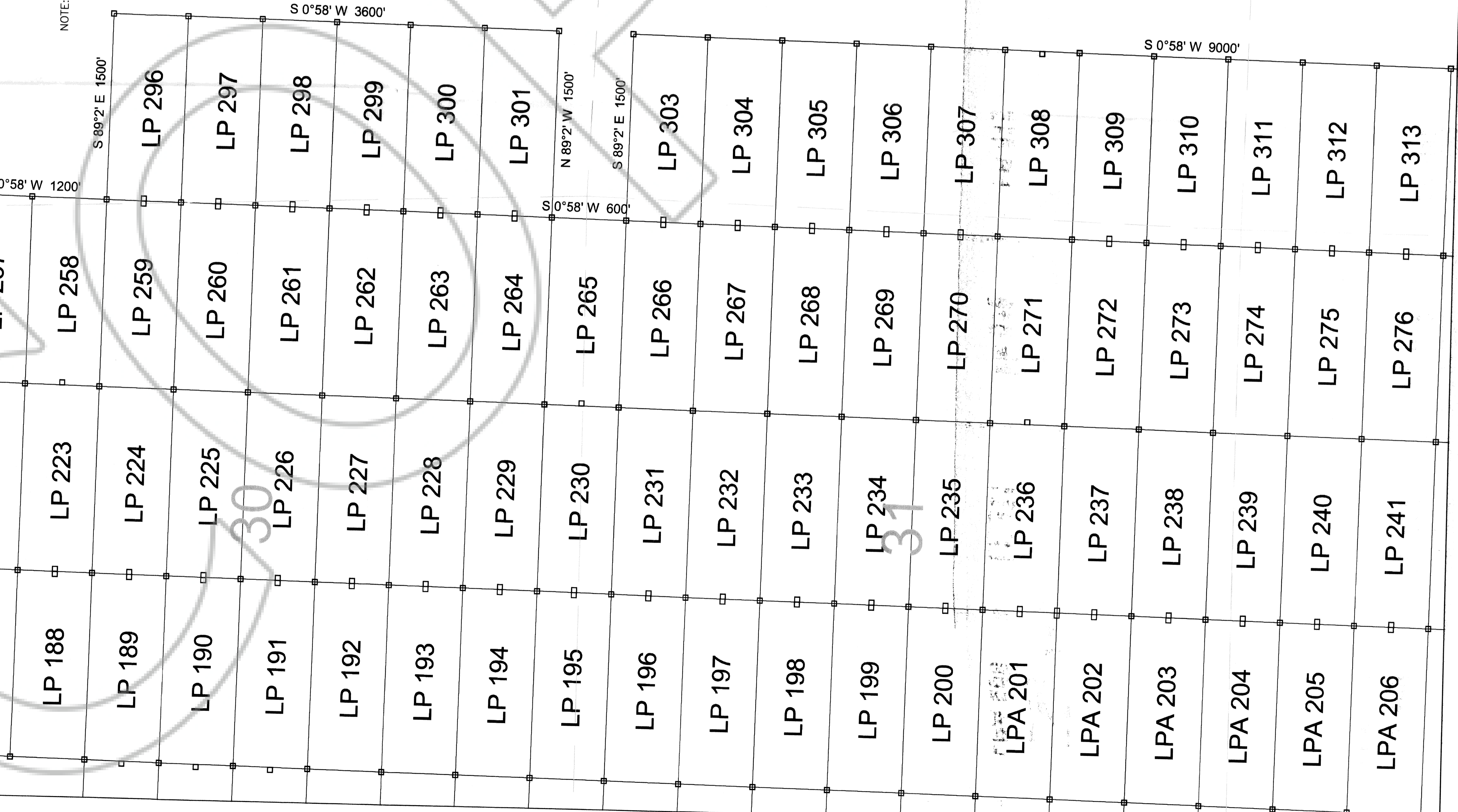
Sheet 4 of 4



LP CLAIMS ARE TIED
 TO THE NE CORNER OF
 SECTION 5, T4S, R59E, MDBM.



NOTE: THE NE COR. LP 296 IS FOUND ABOUT 9234 FEET
 NORTH AND 3736 FEET WEST FROM THE 1/4
 CORNER OF SEC. 5, T4S, R59E, MDBM.



Location Monuments
 are 10' from claim endline

Monuments are
 2X2 Wood Posts

EXPLANATION

- + Found PLS Monument
- Projected Section Lines
- Lode Mining Claim Monument

LOCATION DATES:

- LP 1-25,35-46,62-73,88-90,114-116 OCTOBER 23, 2010
- LP 91-99,117-124,142-153,174-184 OCTOBER 24, 2010
- LP 26-34,53-61,210-219,245-254,283-289 OCTOBER 25, 2010
- LP 47-52,74-87,100-113 OCTOBER 26, 2010
- LP 171-173 OCTOBER 27, 2010
- LP 242-244,281,282 OCTOBER 28, 2010
- LP 125-141,154-170 OCTOBER 29, 2010
- LP 185-200,220-241,255-258,290-293,318-321 OCTOBER 30, 2010
- LP 269-280,306-317 OCTOBER 31, 2010
- LP 259-288,294-301,303-305,322,323 NOVEMBER 1, 2010
- LP 324-341 NOVEMBER 2, 2010
- LPA 201-206 OCTOBER 30, 2010
- LPA 207-209 OCTOBER 28, 2010

T3S

T4S

R59E

+ Found Limestone Rock
 in Mound of Stone
 4 Notches on West Side