



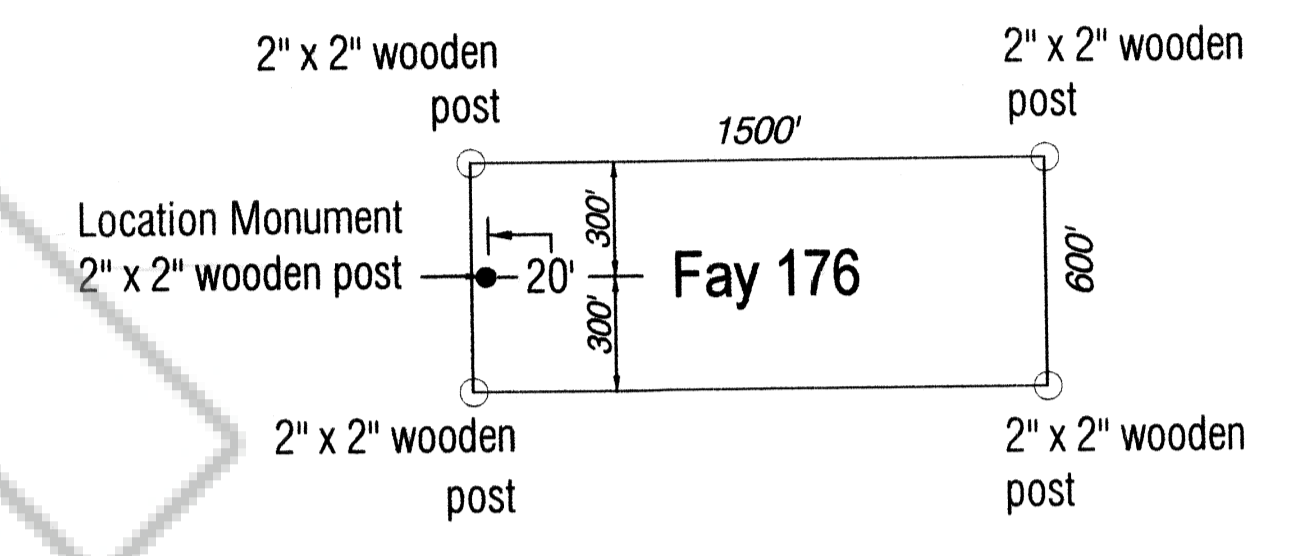
29  
32  
Found Brass Cap  
NE Cor. Sec. 32  
T1N-R71E MDB&M

12323 - Azim. 209°

5

4

35



Typical Lode Claim

**Location Dates:**  
Fay 171 - 190 located July 7, 2010

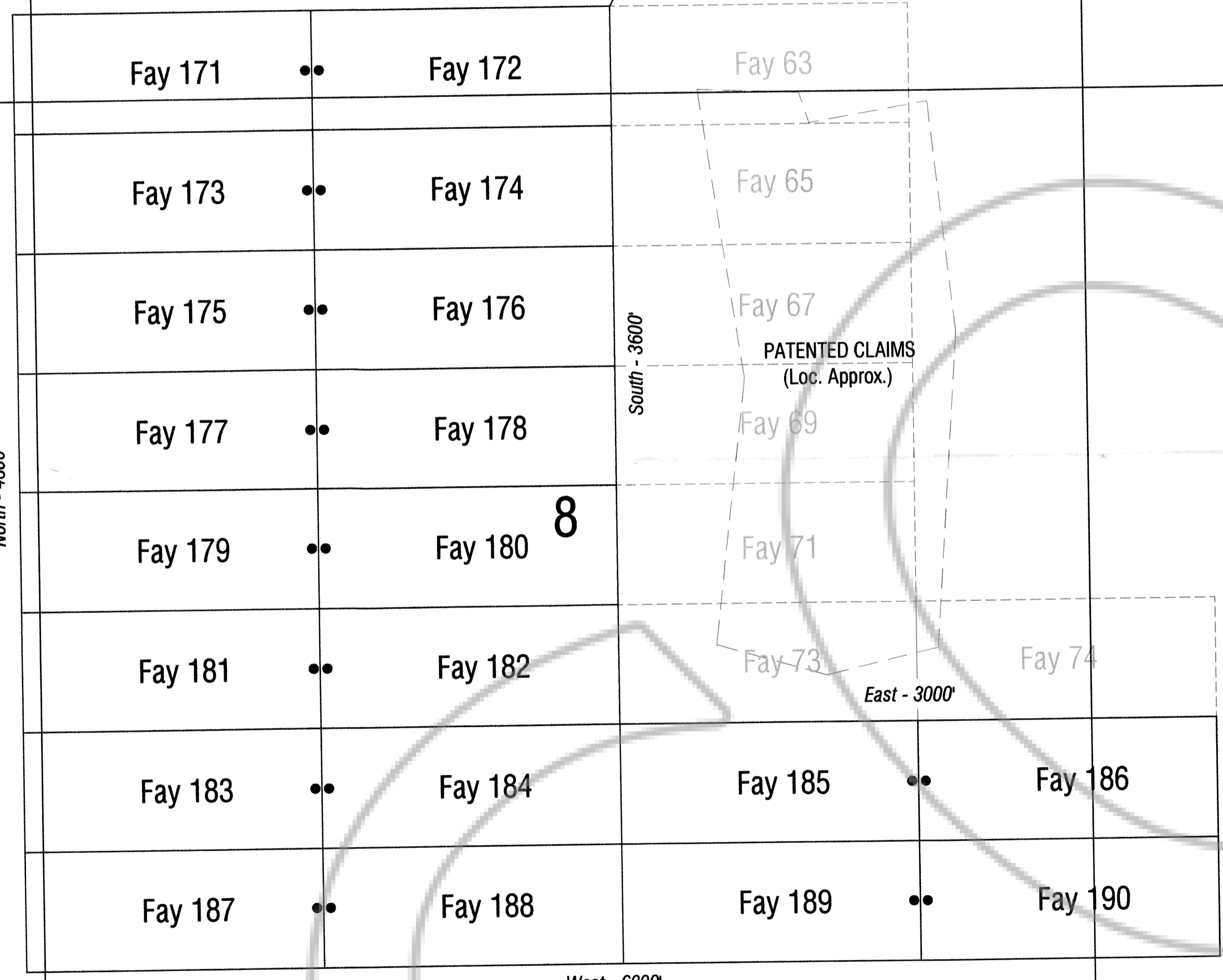
**Locator:**  
Nevada High Desert Gold Corp LLC.  
4201 East Yale Avenue  
Suite 230  
Denver, Colorado 80222

T  
1  
S

7

North - 4800'

East - 3000'



8

9

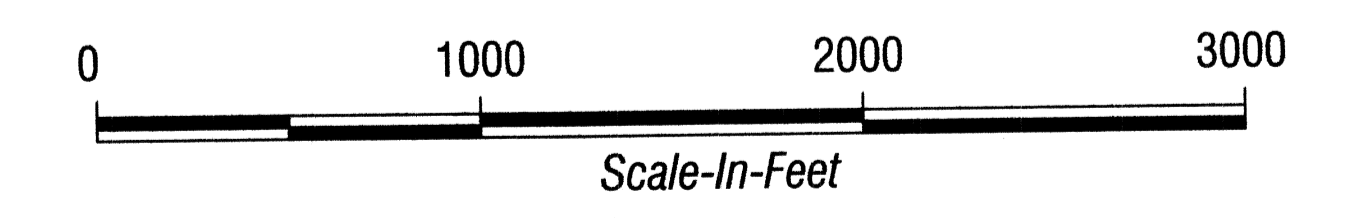
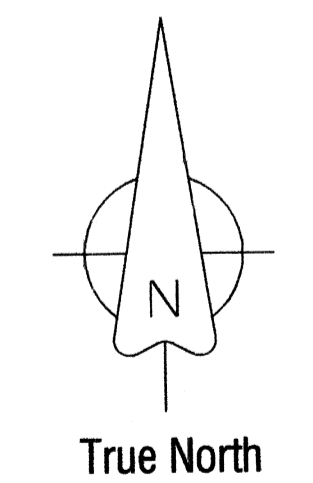
2

Lincoln Co., Nevada  
Iron Co., Utah

West - 6000'

East - 3000'

South - 1200'



<p>High Desert Gold Corp. 4201 East Yale Avenue Suite 230 Denver, Colorado 80222</p>		<h2>Gold Spring Project</h2> <h3>Fay Lode Mining Claims</h3> <p>Lincoln County, Nevada</p>	
DRAWN BY: M. Montoya	DATE 7/14/10	PROJECT NO.:	PROJECT: Gold Springs
GEOLOGY BY:	DATE:	SCALE: 1"=500'	SHEET 2 OF 2
LAST REVISION:	DATE:	MINING CLAIMS	

REV  
A