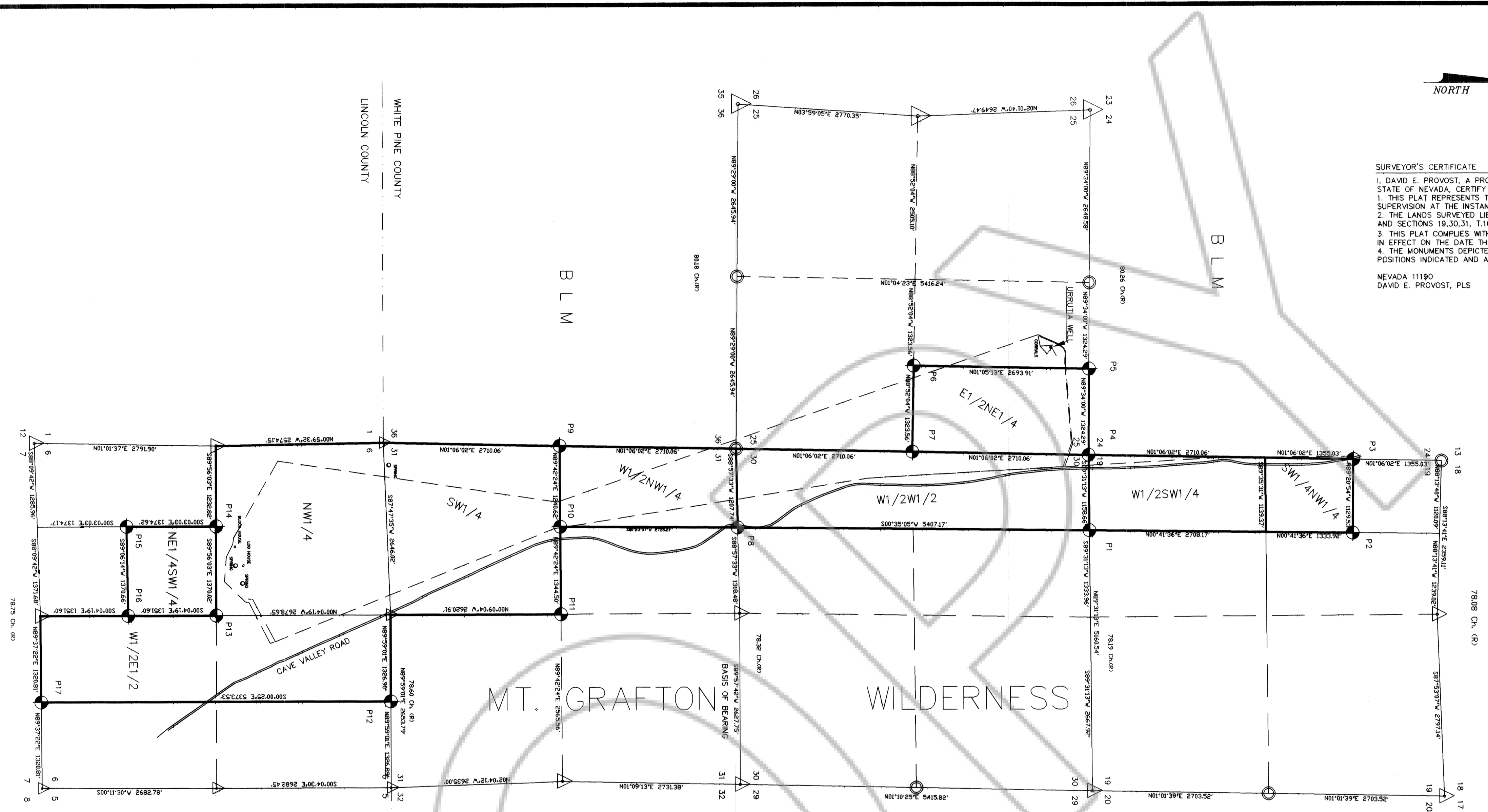


SURVEYOR'S CERTIFICATE
 I, DAVID E. PROVOST, A PROFESSIONAL LAND SURVEYOR LICENSED IN THE STATE OF NEVADA, CERTIFY THAT:
 1. THIS PLAT REPRESENTS THE RESULTS OF A SURVEY CONDUCTED UNDER MY DIRECT SUPERVISION AT THE INSTANCE OF CAVE VALLEY RANCHES, LLC.
 2. THE LANDS SURVEYED LIE WITHIN SECTION 6, T.9N., R.64E., MDM; SECTION 25, T.10N., R.63E., MDM AND SECTIONS 19, 30, 31, T.10N., R.64E., MDM AND THE SURVEY WAS COMPLETED ON MARCH 19, 2010.
 3. THIS PLAT COMPLIES WITH THE APPLICABLE STATE STATUTES AND ANY LOCAL ORDINANCES IN EFFECT ON THE DATE THAT THE GOVERNING BODY GAVE ITS FINAL APPROVAL.
 4. THE MONUMENTS DEPICTED ON THE PLAT ARE OF THE CHARACTER SHOWN, OCCUPY THE POSITIONS INDICATED AND ARE OF SUFFICIENT NUMBER AND DURABILITY.

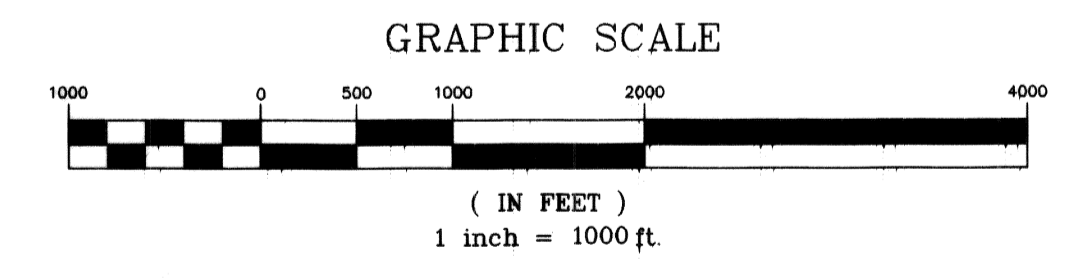
NEVADA 11190
 DAVID E. PROVOST, PLS



PRIVATE BOUNDARY MONUMENTS - COORDINATE LIST (UTM, NAD 83)

POINT	EASTING	NORTHING
P1	384271.07	1145019.44
P2	384253.07	1145019.48
P3	384253.11	1145033.11
P4	384272.98	1145034.07
P5	384273.07	1145050.77
P6	384176.44	1145051.44
P7	384177.27	1145033.11
P8	384119.67	1145020.11
P9	384052.67	1145038.07
P10	384052.77	1145020.44
P11	384052.77	1145003.44
P12	384028.67	1144948.67
P13	384000.47	1145003.47
P14	384000.47	1145020.57
P15	383946.87	1145020.57
P16	383947.07	1145003.27
P17	383933.77	1144948.67

BASIS OF BEARING: FOUND MONUMENTS NORTH BOUNDARY SECTION 31, T.10N., R.64E., MDM



- LEGEND**
- ▲ PLSS MONUMENT
 - ◆ SET REBAR & CAP PLS 11190
 - NOTHING FOUND OR SET / PROPORTION POINT
 - EXTERIOR PRIVATE BOUNDARY
 - EXISTING FENCE
 - Ch. CHAIN (1 CHAIN = 66 FT.)
 - FD FOUND
 - (R) RECORD
 - MDS MOUND OF STONE

NOTES

THIS RECORD OF SURVEY IS TO DEFINE THE EXTERIOR BOUNDARY OF A PORTION OF THE CAVE VALLEY RANCH, LLC, AS DESCRIBED WITHIN THE LEGAL DESCRIPTION WHITE PINE COUNTY FILE NO. 325146. THIS PORTION OF THE RANCH KNOWN AS PARKER STATION.

LANDS WITHIN PARKER STATION ARE LOCATED WITHIN SECTION 6, T.9N., R.64E.; SECTION 25, T.10N., R.63E.; SECTIONS 19, 30, 31 T.10N., R.64E. CAVE VALLEY, NV.

THE MT. GRAFTON WILDERNESS AREA CONSISTS OF 78,743 ACRES WITHIN BOTH WHITE PINE AND LINCOLN COUNTIES. THE WESTERLY BOUNDARY FOLLOWS THE CAVE VALLEY ROAD AND EASTERLY BOUNDARY OF PRIVATE LANDS FROM NORTH OF BULLWACK SUMMIT TO PATTERSON PASS ROAD.

GPS COORDINATES SHOWN ARE IN NAD83 AND ARE FOR USE IN LOCATION OF BOUNDARY ANGLE POINTS SET ON THE GROUND. NO OTHER USE IS INTENDED OR APPLICABLE.

ALL DISTANCES SHOWN ARE MEASURED UNLESS MARKED OTHERWISE.

TOTAL ACREAGE: 524.44 Ac. ±

BEFORE RESTORING THE CORNERS, THE LINES OF THE ORIGINAL SURVEY WERE RETRACED AND DILIGENT SEARCH MADE FOR ANY EVIDENCE OF THE ORIGINAL CORNERS AND OTHER CALLS OF THE ORIGINAL FIELD NOTE RECORD.

THE RULES OF PROPORTIONATE MEASUREMENT WERE APPLIED IN ORDER TO ASCERTAIN THE POSITION OF LOST CORNERS, AFTER COMPLETING THE NECESSARY RETRACEMENTS TO CONNECT WITH THE IDENTIFIED CORNER LOCATIONS.

REFERENCES

LEGAL DESCRIPTION
 BLM SURVEY NOTES AND PLATS
 USGS TOPO MAP (PARKER STATION)
 BLM WILDERNESS MAP MT. GRAFTON

MOUNTAIN HIGH SURVEYING 1500 MURRY STREET ELY, NV 89301 775-289-6722	
<p>DOC # 0136025 03/14/2010 02:06 PM Official Record Recording Requested By: MOUNTAIN HIGH SURVEYING Lincoln County - NV Leslie Boucher - Recorder Fee \$21.00 Page 1 of 1 Book - 0 Page- 0017 0136025 DEPUTY RECORDER FILE No. _____</p>	<p>RECORD OF SURVEY FOR CAVE VALLEY RANCH LLC PARKER STATION WITHIN WHITE PINE COUNTY & LINCOLN COUNTY, NEVADA</p>