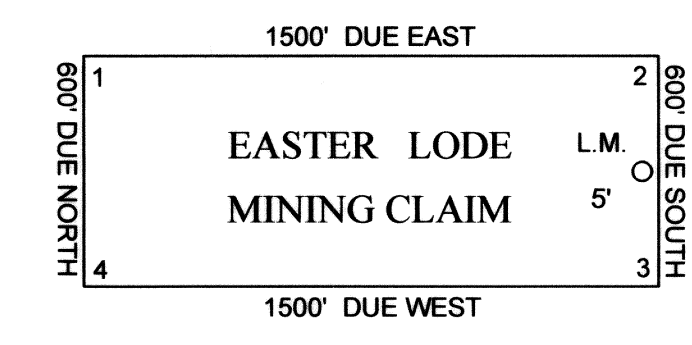


**TYPICAL CLAIM & CORNER NUMBERS**



**TIE POINT:**

FROM THE WEST 1/4 CORNER OF SECTION 10, T5S, R66E, M.D.B.&M. BEAR S 55°38'34" W, 4079 FEET, TO THE NE CORNER OF EASTER 55.

ALL CLAIMS ARE 600' WIDE X 1500' LONG UNLESS NOTED.

ALL LOCATION MONUMENTS ARE 5' IN FROM THE END CENTER UNLESS NOTED.

ALL LOCATION MONUMENTS AND CLAIM CORNERS ARE 1.5" X 1.5" X 4' WOOD POST.

UNSURVEYED TOWNSHIP, SECTIONS ARE PROJECTED FROM NEVADA G.C.D.B.

⊙ INDICATES A FOUND 1/4 CORNER.

**LOCATION DATE:**

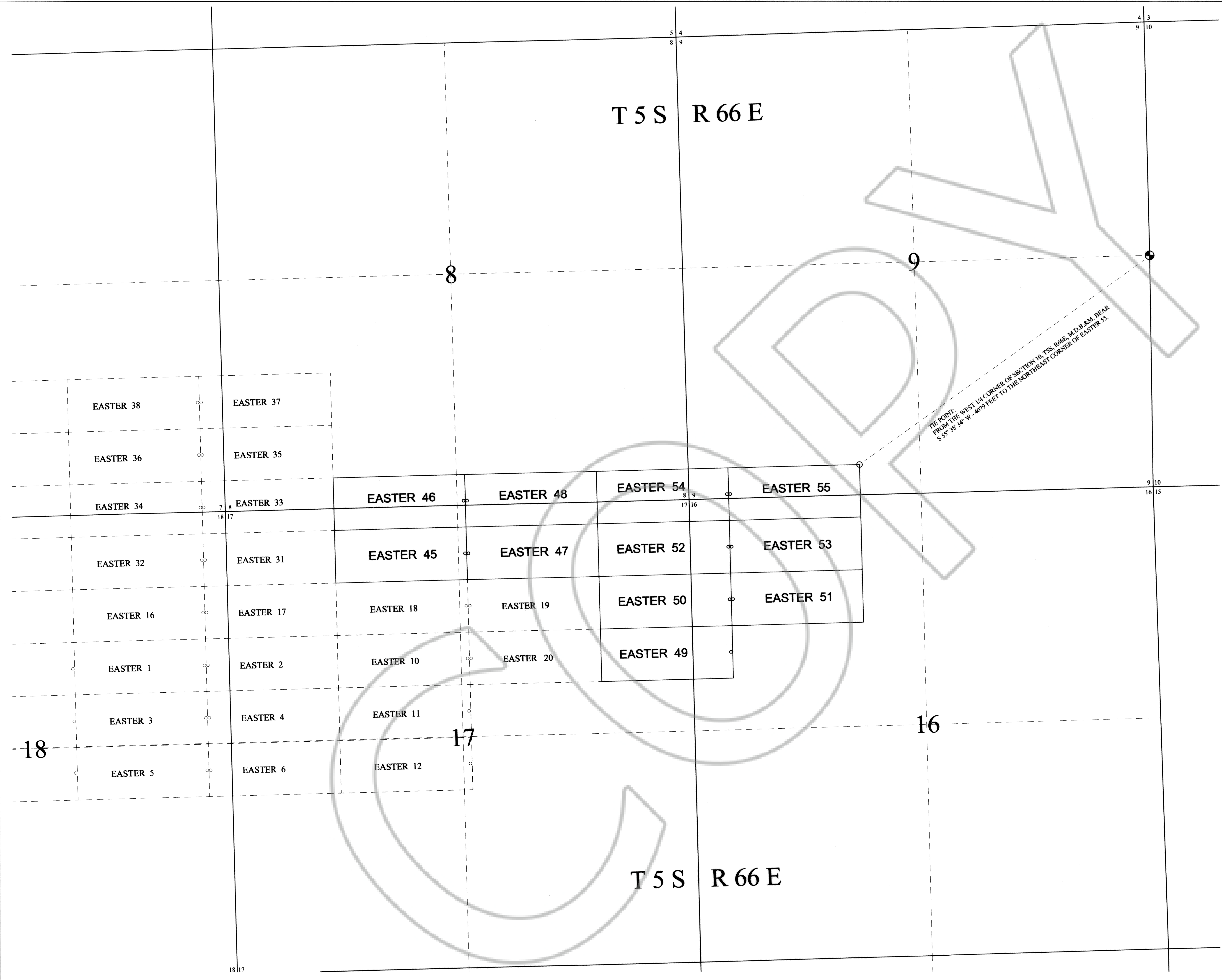
FEBRUARY 12, 2010 (EASTER 45 - 55).

**LA QUINTA NEVADA, INC.**  
 a subsidiary of La Quinta Resources Corp.

**3495 LAKESIDE # 286**  
**RENO, NEVADA 89509**

**EASTER LODE MINING CLAIMS**  
**NUMBERS [ 45-55 ]**

**SECTIONS 8, 9, 17 & 18, T5S, R66E, M.D.B.&M.**  
**LINCOLN COUNTY, NEVADA**



TIE POINT:  
 FROM THE WEST 1/4 CORNER OF SECTION 10, T5S, R66E, M.D.B.&M. BEAR  
 S 55°38'34" W - 4079 FEET TO THE NORTHEAST CORNER OF EASTER 55.