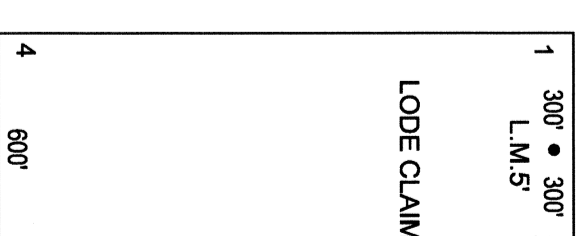
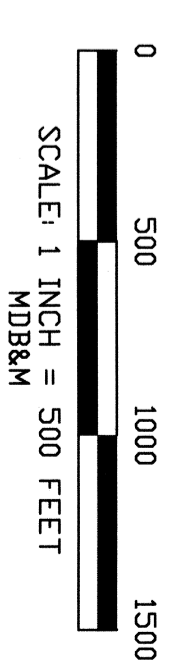
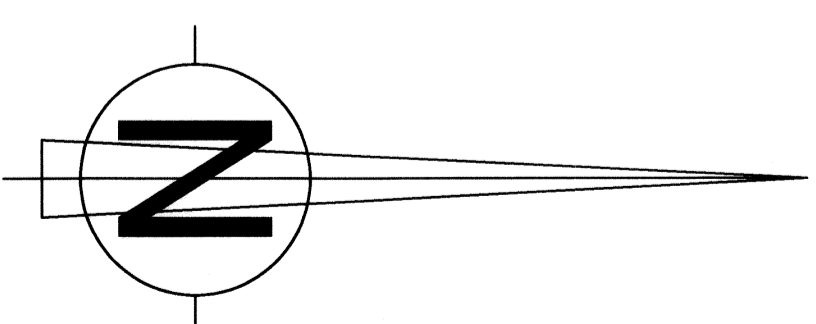
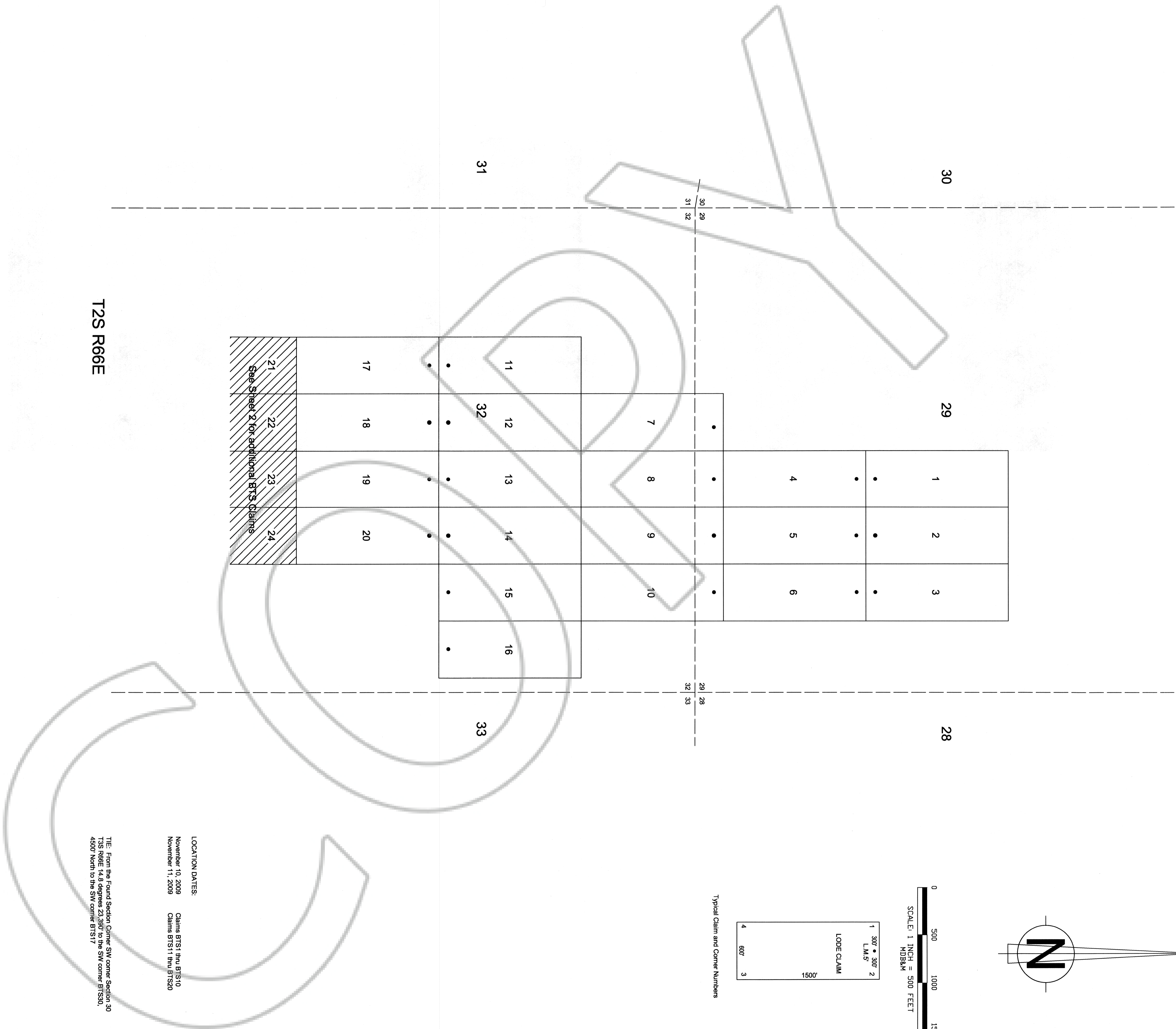


T2S R66E

T2S R66E



Typical Claim and Corner Numbers

LOCATION DATES:
 November 10, 2009 Claims BTS1 thru BTS10
 November 11, 2009 Claims BTS11 thru BTS20

NOTE: From the Found Section Corner SW corner Section 30
 T2S R66E 14.8 degrees 23.360' to the SW corner BTS30,
 4500' North to the SW corner BTS17

ALL CLAIMS ARE 600' WIDE X 1500' LONG UNLESS NOTED.
 ALL LOCATION MONUMENTS ARE 5' IN FROM THE END CENTER
 UNLESS NOTED.
 ALL LOCATION MONUMENTS AND CLAIM CORNERS ARE
 2" X 2 X 4" WOOD POSTS
 UNSURVEYED TOWNSHIP, SECTION LINES PROJECTED

INFRASTRUCTURE
MATERIALS CORP US
1135 TERMINAL WAY, SUITE 207B
RENO, NV 89502

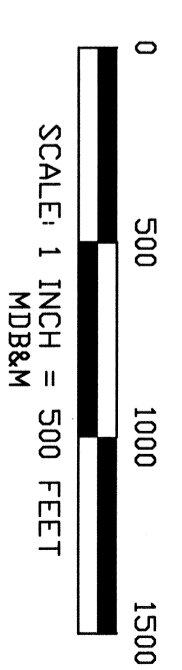
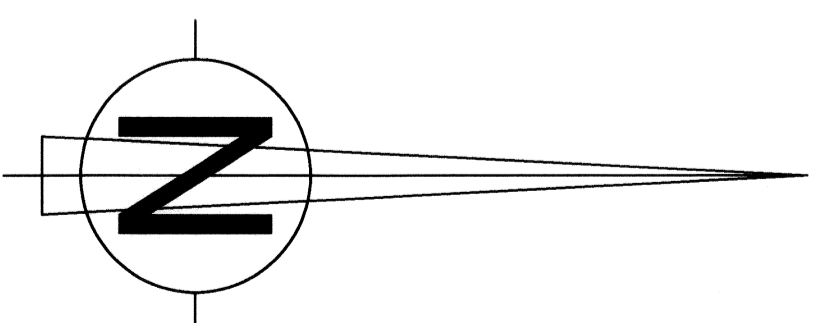
BTS LODE MINING CLAIMS
NUMBERS 1-20
T2S-R66E Sections 29 & 32
LINCOLN COUNTY, NEVADA
 Sheet 1 of 4

DOC # 0135099

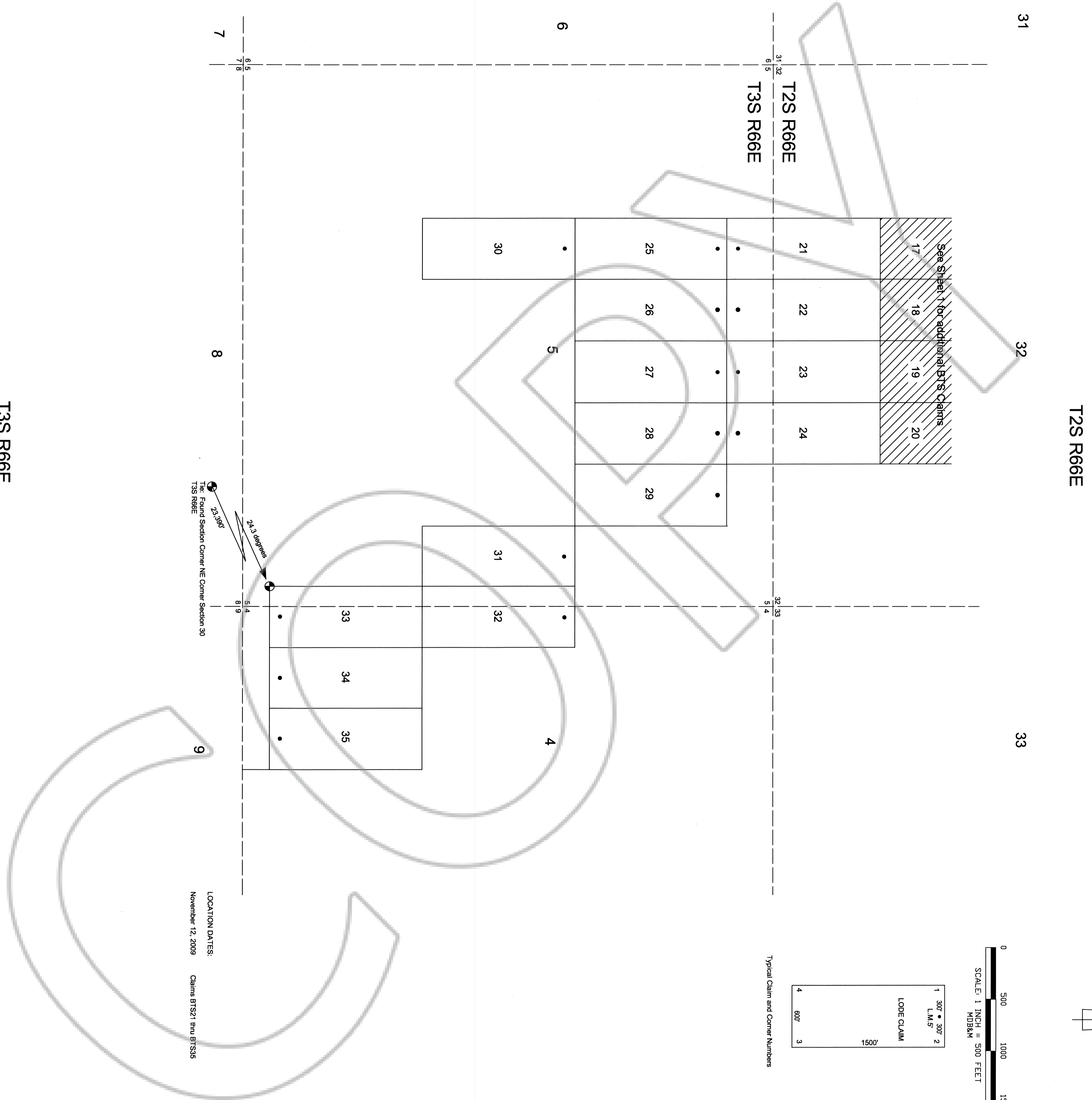
OFFICE OF THE CLERK OF RECORD
 800 N. 3rd Street, Reno, NV 89501
 Recorder Lincoln County - NV
 Leslie Boucher
 Fee: \$750.00
 Book-263 Page-0332



0135099



Typical Claim and Corner Numbers



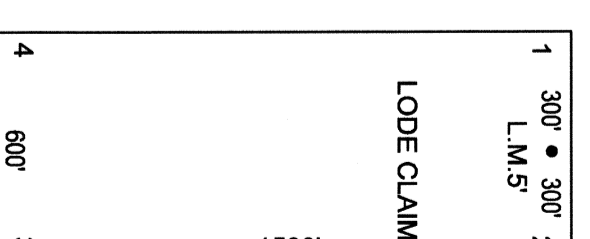
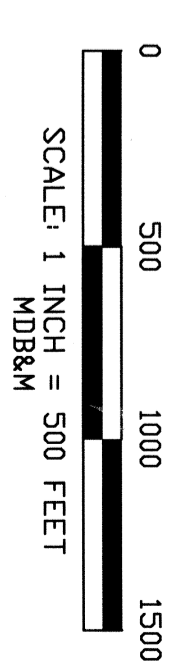
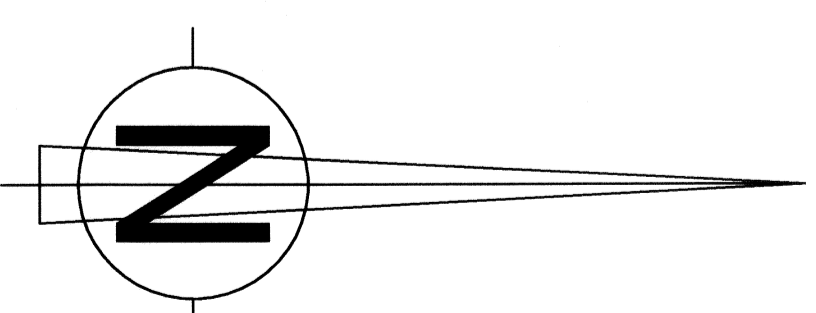
LOCATION DATES:
November 12, 2009 Claims BTS21 thru BTS35

ALL CLAIMS ARE 600' WIDE X 1500' LONG UNLESS NOTED.
ALL LOCATION MONUMENTS ARE 5' IN FROM THE END CENTER UNLESS NOTED.
ALL LOCATION MONUMENTS AND CLAIM CORNERS ARE 2" X 2" X 4" WOOD POSTS
UNSUPERVEYED TOWNSHIP, SECTION LINES PROJECTED

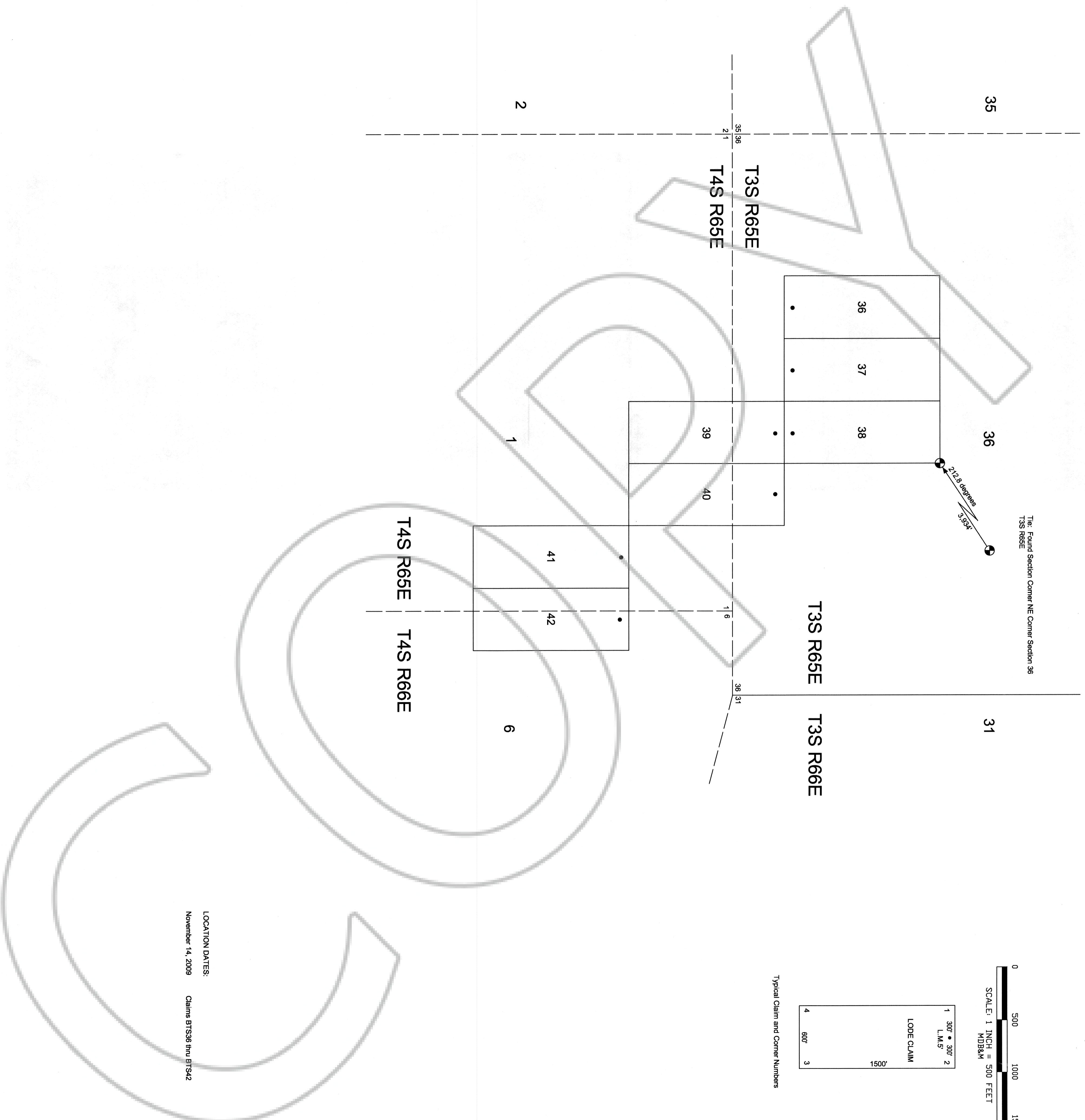
INFRASTRUCTURE
MATERIALS CORP US
1135 TERMINAL WAY, SUITE 207B
RENO, NV 89502

BTS LODGE MINING CLAIMS
NUMBERS 21-35
T2S-R66E Section 32
T3S-R66E SECTIONS 4 & 5
LINCOLN COUNTY, NEVADA
Sheet 2 of 4

01/09/2010 01:30:09 Paper 333 Sheet 2 of 4



Typical Claim and Corner Numbers



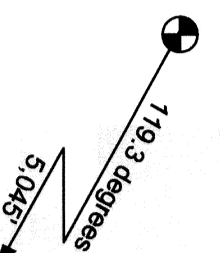
LOCATION DATES:
November 14, 2009 Claims BT3S36 thru BT342

ALL CLAIMS ARE 600' WIDE X 1500' LONG UNLESS NOTED.
ALL LOCATION MONUMENTS ARE 9" IN FROM THE END CENTER UNLESS NOTED.
ALL LOCATION MONUMENTS AND CLAIM CORNERS ARE 2" X 2 X4" WOOD POSTS.
UNSURVEYED TOWNSHIP, SECTION LINES PROJECTED

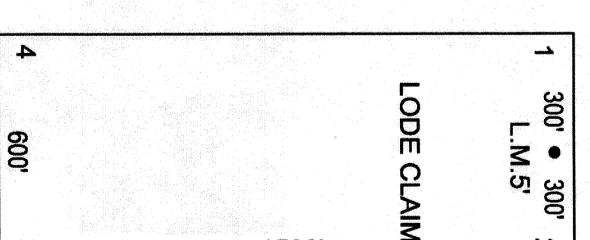
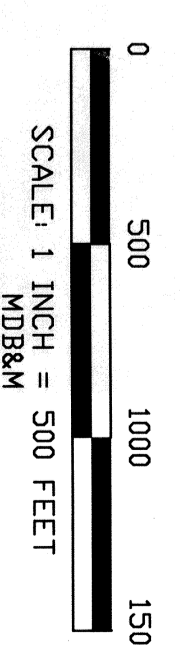
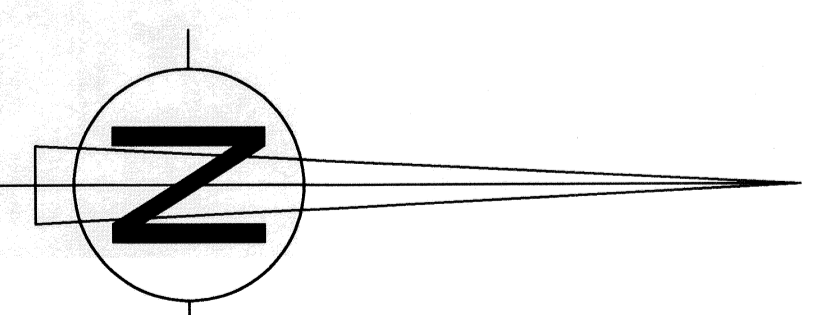
INFRASTRUCTURE
MATERIALS CORP US
1135 TERMINAL WAY, SUITE 207B
RENO, NV 89502

BTS LODGE MINING CLAIMS
NUMBERS 36-42
T3S-R65E SECTION 36, T4S-R65E
SECTION 1, T4S-R66E SECTION 6
LINCOLN COUNTY, NEVADA
Sheet 3 of 4

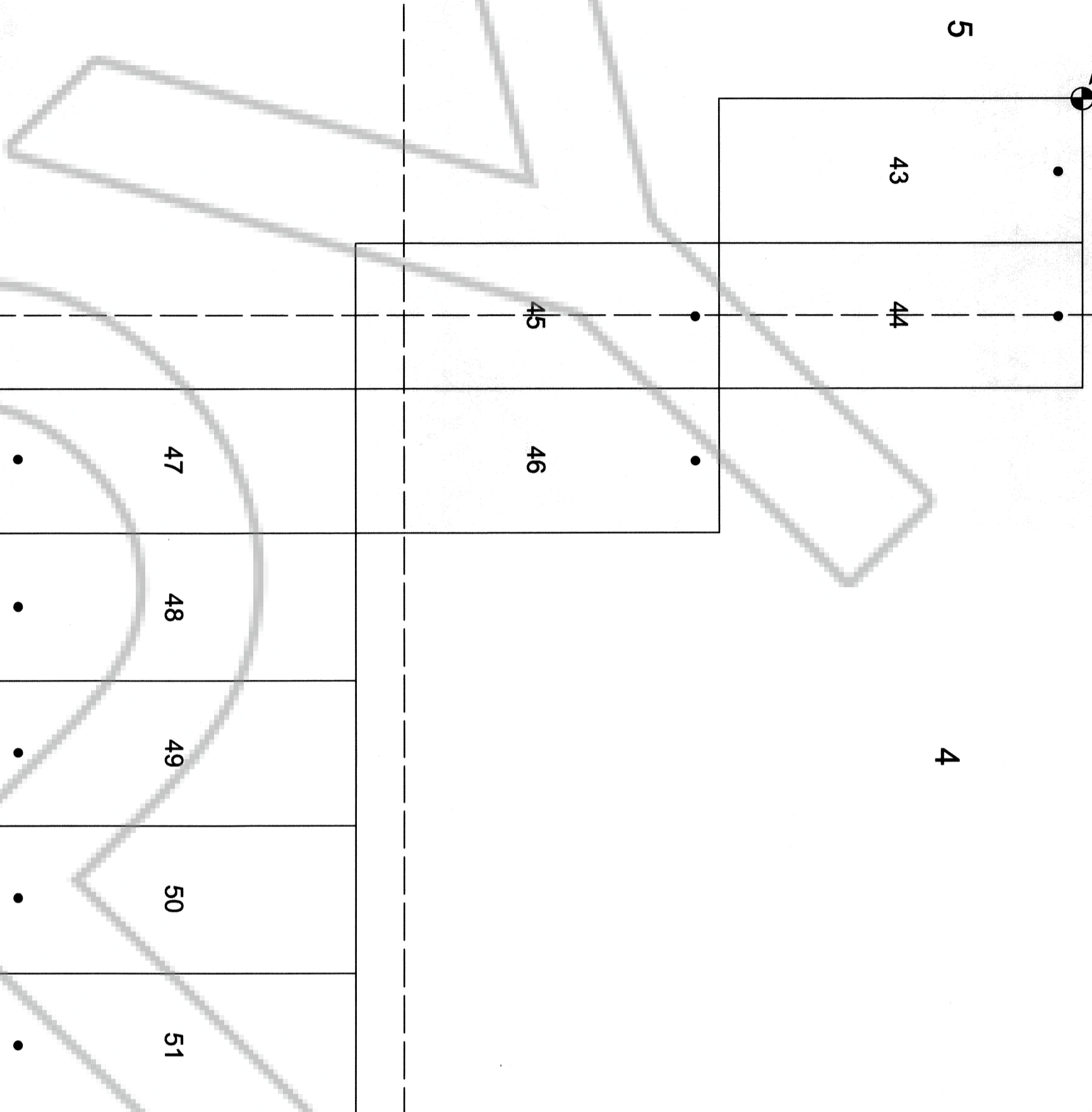
The Found Section Corner NW Corner Section 5
T4S R65E



T4S R65E



Typical Claim and Corner Numbers



T4S R65E

LOCATION DATES:
November 15, 2009 Claims BT343 thru BT351

ALL CLAIMS ARE 600' WIDE X 1500' LONG UNLESS NOTED
ALL LOCATION MONUMENTS ARE 5' IN FROM THE END CENTER
UNLESS NOTED
ALL LOCATION MONUMENTS AND CLAIM CORNERS ARE
2" X 2" X 4" WOOD POSTS
UNSURVEYED TOWNSHIP, SECTION LINES PROJECTED

INFRASTRUCTURE
MATERIALS CORP US
1135 TERMINAL WAY, SUITE 207B
RENO, NV 89502

BTS LODGE MINING CLAIMS
NUMBERS 43-51
T4S-R65E Sections 4, 5, 8 & 9
LINCOLN COUNTY, NEVADA
Sheet 4 of 4