

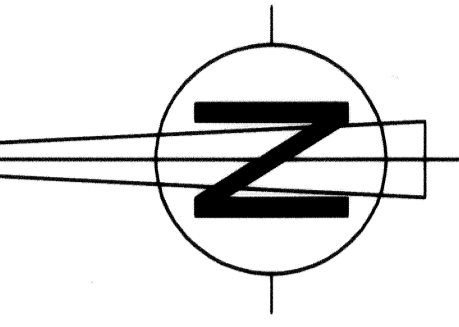
9 Shown on page 3

10

127	134	138
128	135	139

11

T8S R70E

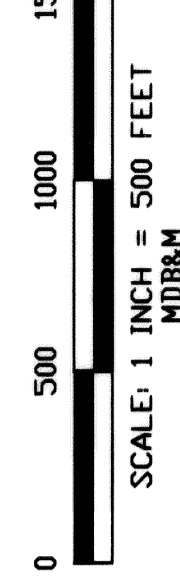


16

15

11	38	54
12	39	55
13	40	56
14	41	57

14



1	300'	2
•	L.M.S	LMT LODE CLAIM
300'	600'	3
4	1500'	3

1	69	
2	70	
3	71	
4	72	
5	73	23
6	74	
7		
8		
9		
10		
22		
19		
20		
21		
23		
24		
25		

21

LOCATION DATES:  
 September 29, 2009 LMT 34-37, 50-62, and 69-74  
 September 30, 2009 LMT 11-16 and 38-43  
 October 1, 2009 LMT 1-10 and 17-25

Tie: From NE corner Section 3 7,280' 218.4 degrees  
 to NE corner LMT 119  
 Unsurveyed Township  
 Section Lines projected

28

Shown on page 2

27

26

T8S R70E

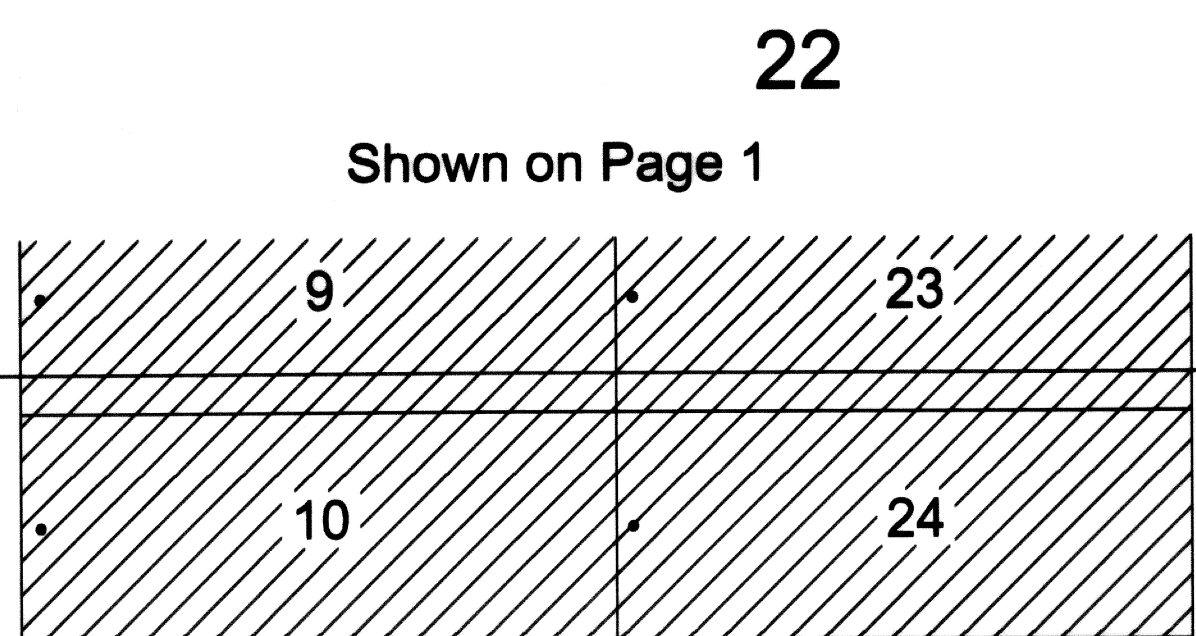
ALL CLAIMS ARE 600' WIDE X 1500' LONG UNLESS NOTED.  
 ALL LOCATION MONUMENTS ARE 5' IN FROM THE END CENTER UNLESS NOTED.  
 ALL LOCATION MONUMENTS AND CLAIM CORNERS ARE 2" X 2" X 4' WOOD POSTS

INFRASTRUCTURE MATERIALS CORP. US  
 1135 TERMINAL WAY STE. 207B  
 RENO, NEVADA 89502

LMT LODE MINING CLAIMS  
 NUMBERS 1-25, 34-43, 50-62, 69-74  
 T8S R70E Sections 14, 15, 22, 23, 27  
 LINCOLN COUNTY, NEVADA

DOC # 0134935  
 Official Record  
 Lincoln County - NV  
 Leslie Boucher - Recorder  
 Book- 252 Page- 0434

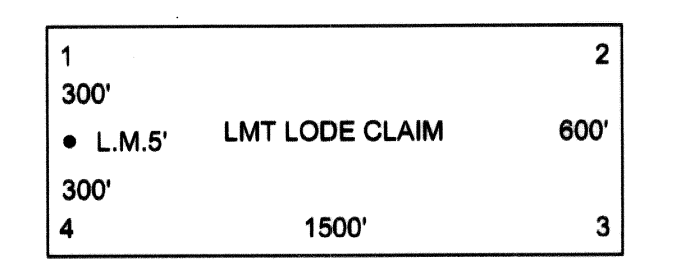
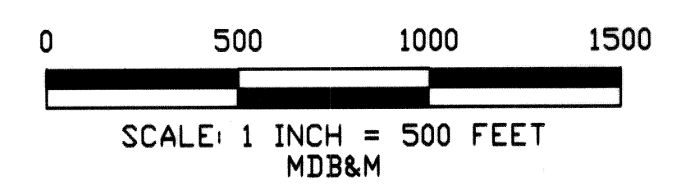
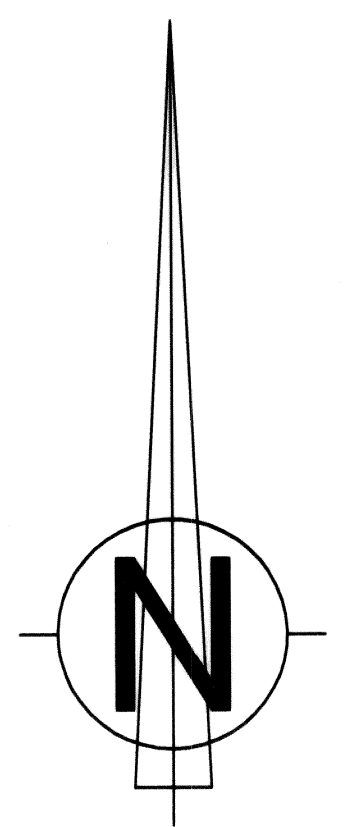
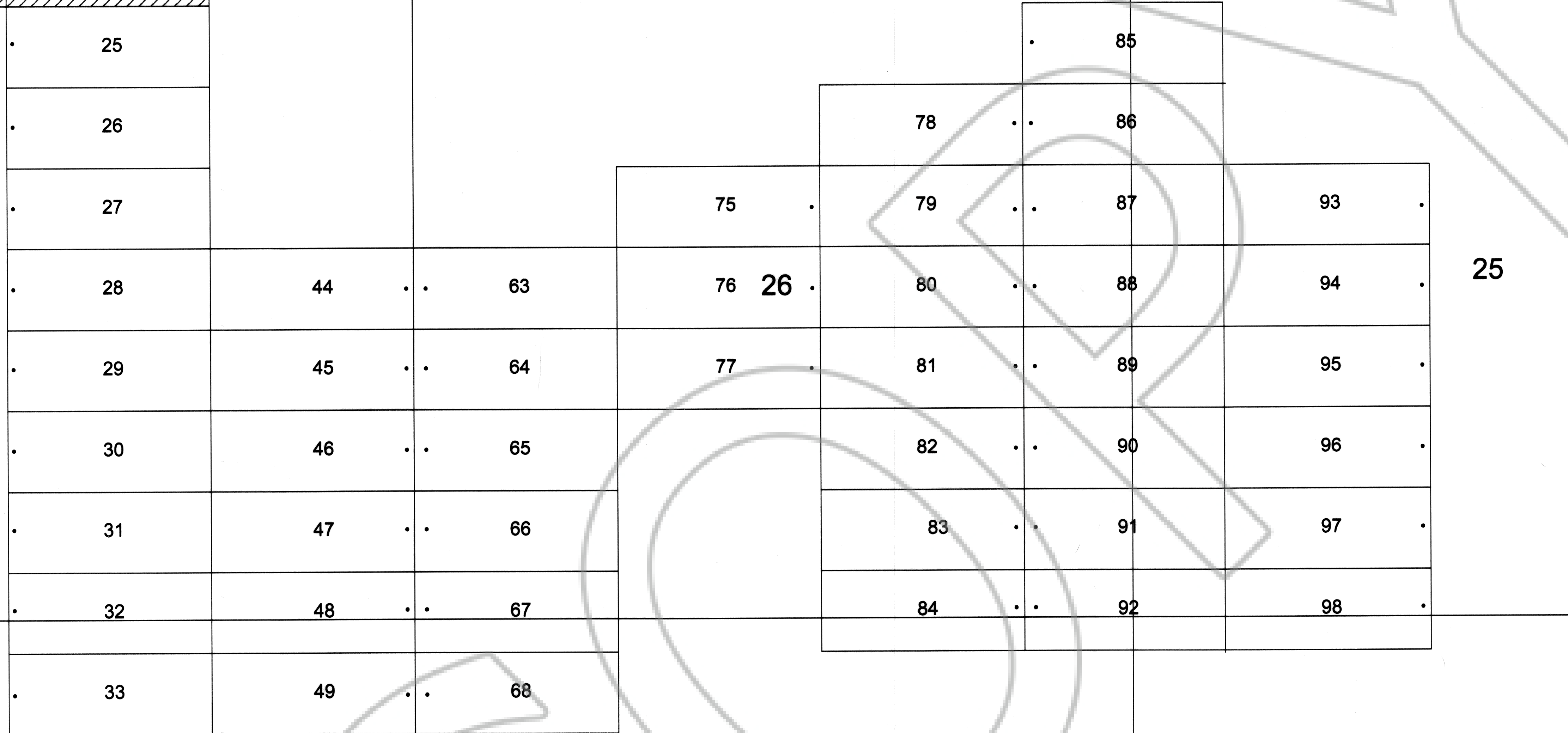




23  
T8S R70E

24

27



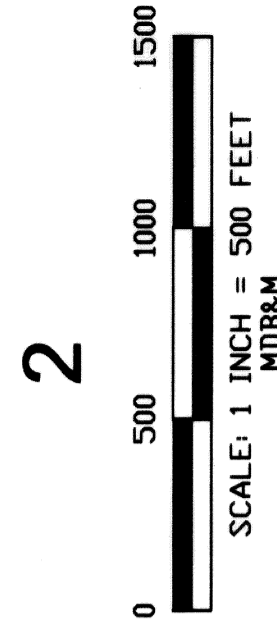
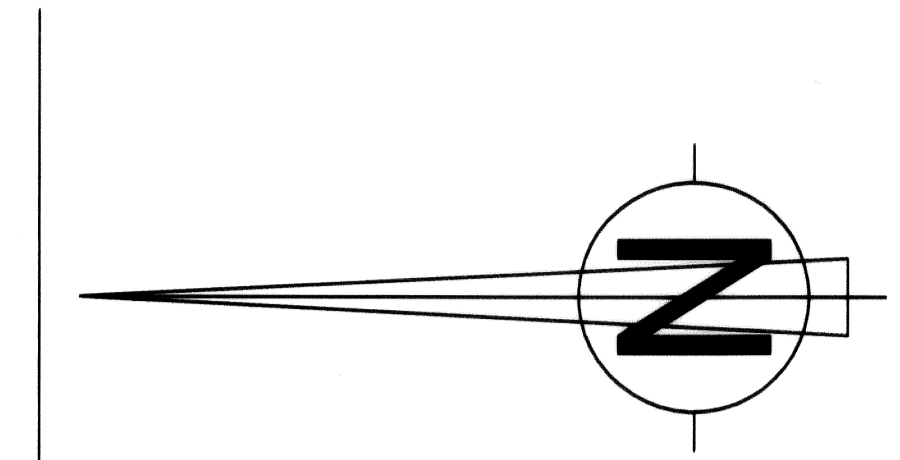
LOCATIONS DATES:  
 October 1, 2009 LMT 25-33  
 October 2, 2009 LMT 44-49, 63-68 and 75-77  
 October 3, 2009 LMT 78-98

Tie: From NE corner Section 3  
 7,280' 218.4 degrees to NE corner LMT 119  
 Unsurveyed Township  
 Sections Lines projected

ALL CLAIMS ARE 600' WIDE X 1500' LONG UNLESS NOTED.  
 ALL LOCATION MONUMENTS ARE 5' IN FROM THE END CENTER UNLESS NOTED.  
 ALL LOCATION MONUMENTS AND CLAIM CORNERS ARE 2" X 2" X 4' WOOD POSTS

INFRASTRUCTURE MATERIALS CORP. US  
 1135 TERMINAL WAY STE. 207B  
 RENO, NEVADA 89502

LMT LODE MINING CLAIMS  
 NUMBERS 25-33, 44-49, 63-68, 75-98  
 T8S R70E Sections 25-27, 34-36  
 LINCOLN COUNTY, NEVADA



1	300'	L.M.T.	LMT LODGE CLAIM	600'
2	300'	4	1500'	3

T8S R70E

4

3

Tie: NE Corner Section 3 7,280' 218.4 degrees to the NE corner of LMT 119

99	••	109	119	•
100	••	110	120	•
101	••	111	121	•
102	••	112	122	••
103	••	9 113	123	••
104	••	114	124	••
105	••	115	125	••
106	••	116	126	••
107	••	117	127	••
108	••	118	128	••
			129	•
			130	•
			131	•
			132	•
			133	•
			134	•
			135	•
			136	•
			137	•
			138	•
			139	•

LOCATION DATES:  
September 28, 2009 LMT 99-139  
Unsurveyed Township  
Section Lines Projected

10

11

16

15

Shown for connection to Page 1

ALL CLAIMS ARE 600' WIDE X 1500' LONG UNLESS NOTED.  
ALL LOCATION MONUMENTS ARE 5' IN FROM THE END CENTER UNLESS NOTED.  
ALL LOCATION MONUMENTS AND CLAIM CORNERS ARE 2" X 2" X 4' WOOD POSTS

T8S R70E

INFRASTRUCTURE MATERIALS CORP. US  
1135 TERMINAL WAY STE. 207B  
RENO, NEVADA 89502

LMT LODGE MINING CLAIMS  
NUMBERS 99-139  
T8S R70E Sections 9, 10, 15, 16  
LINCOLN COUNTY, NEVADA