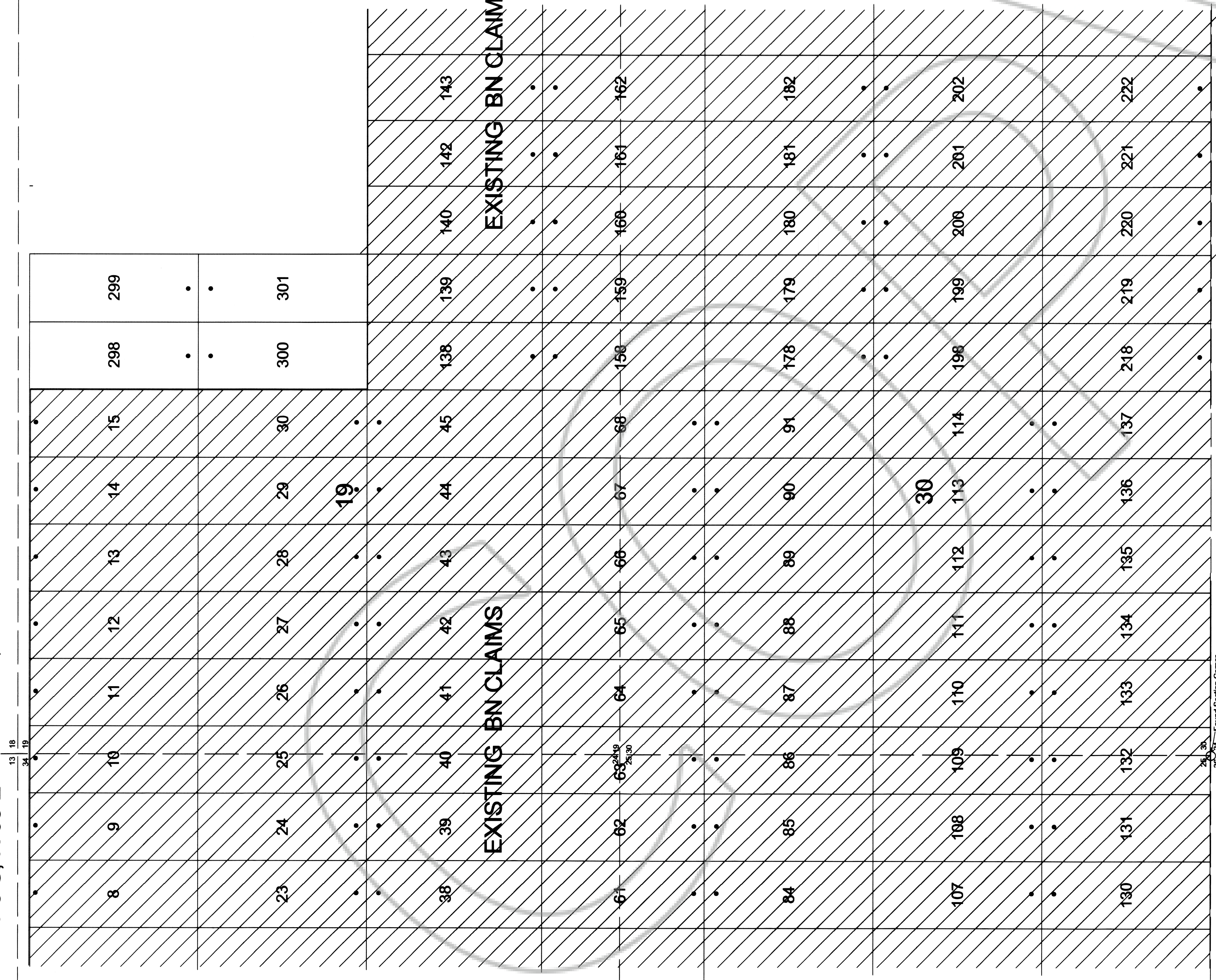


T 8 S, R 68 E

T 8 S, R 69 E

13 18
34 19



T 8 S, R 68 E

T 8 S, R 69 E

24 29
36 31 Found Section Corner

LOCATION DATES:

September 9, 2009 BN 298-301
TIE: SW Corner Section 26 T8S R68E
15,600'E and 7500' N to SW corner of
BN 300

Unsurveyed Township
Section lines projected.

ALL CLAIMS ARE 600' WIDE X 1500' LONG UNLESS NOTED.
ALL LOCATION MONUMENTS ARE 5' IN FROM THE END CENTER
UNLESS NOTED.
ALL LOCATION MONUMENTS AND CLAIM CORNERS ARE
2" X 2 1/4" WOOD POSTS

INFRASTRUCTURE
MATERIALS CORP. US
1135 TERMINAL WAY, SUITE 207B
RENO, NV 89502

DOC # 0134934
Official Record
The State of Nevada
Lincoln County - NV
Leslie Baucher - Recorder
Fee: \$54.88 Page: 1 of 1
Book-252 Page-0333 and Br. 4E
0134934

BN LODE MINING CLAIMS
NUMBERS 298-301
T8S-R69E Section 19
LINCOLN COUNTY, NEVADA