

T9S R69E

T9S R70E

26

25

183

184

4

185

186

13

26

5

6

7

27

8

35

1

2

3

9

10

11

12

31

28

29

30

31

35

T9S R69E

T10S R69E

T9S R70E

T10S R70E

32

33

34

36

37

34

2

1

Tie: SW corner Sec. 31-750 ft. West to the SW corner of JMT 32

6

LOCATIONS DATES:
September 7, 2009 JMT-1 thru JMT-25
September 8, 2009 JMT-26 thru JMT-37
October 23, 2009 JMT-183 thru 186

ALL CLAIMS ARE 600' WIDE X 1500' LONG UNLESS NOTED.

ALL LOCATION MONUMENTS ARE 5' IN FROM THE END CENTER UNLESS NOTED.

ALL LOCATION MONUMENTS AND CLAIM CORNERS ARE 2" X 2" X 4' WOOD POSTS

11

12

INFRASTRUCTURE MATERIALS CORP. US
1135 TERMINAL WAY STE. 207B
RENO, NEVADA 89502

JMT LODE MINING CLAIMS

NUMBERS 1-37 & 183-186

T9S R69E Sections 25 & 36; T9S R70E

Section 31, T10S R69E Section 1, and

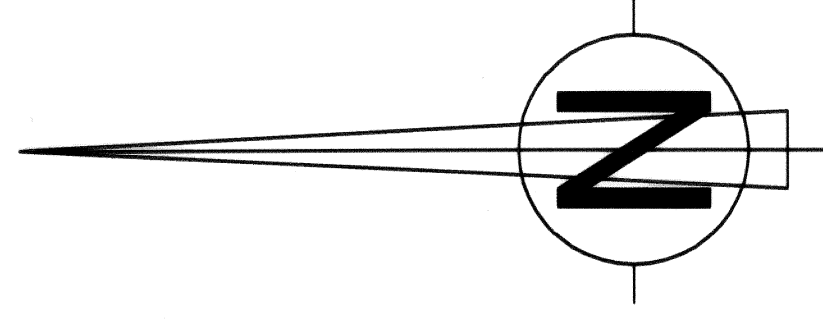
T10S R70E Section 6

LINCOLN COUNTY, NEVADA

page 1 of 3

DOC # 0134933
11/22/2009 09:40 AM
Official Record
INFRASTRUCTURE MATERIALS CORP.
Lincoln County - NV
Fee \$2,794.00
Book-202 Page-033



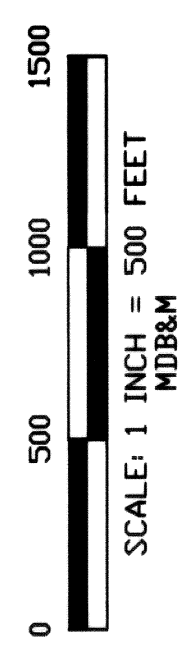


21

20

T10S R69E

Tie: SW corner Sec. 20 784 ft. East to the SW corner of JMT-90



1	300'	JMT LODE CLAIM
2	L.M.S	600'
3	300'	1500'
4		

89	• • 108	• • 127	• • 146	• • 155	• • 164
90	• • 109	• • 128	• • 147	• • 156	• • 165
91	• • 110	• • 129	• • 148	• • 157	• • 166
92	• • 111	• • 130	• • 149	• • 158	• • 167
93	• • 112	• • 131	• • 150	• • 159	• • 168
94	• • 113	• • 132	• • 151	• • 160	• • 169
95	• • 29 114	• • 133	• • 152	• • 161	• • 170
96	• • 115	• • 134	• • 153	• • 162	• • 171
97	• • 116	• • 135	• • 154	• • 163	• • 172
98	• • 117	• • 136			
99	• • 118	• • 137			
100	• • 119	• • 138			
101	• • 120	• • 139			
102	• • 121	• • 140			
103	• • 32 122	• • 141			
104	• • 123	• • 142			
105	• • 124	• • 143			
106	• • 125	• • 144			
107	• • 126	• • 145			

33

LOCATION DATES:
September 1, 2009 JMT-89 thru JMT-126
September 2, 2009 JMT-127 thru JMT-172

ALL CLAIMS ARE 600' WIDE X 1500' LONG UNLESS NOTED.
ALL LOCATION MONUMENTS ARE 5' IN FROM THE END CENTER UNLESS NOTED.
ALL LOCATION MONUMENTS AND CLAIM CORNERS ARE 2" X 2" X 4' WOOD POSTS

T10S R69E

INFRASTRUCTURE MATERIALS CORP. US
1135 TERMINAL WAY STE. 207B
RENO, NEVADA 89502

JMT LODE MINING CLAIMS
NUMBERS 89-172
T10S R69E Sections 20, 28, 29, 32 & 33
LINCOLN COUNTY, NEVADA