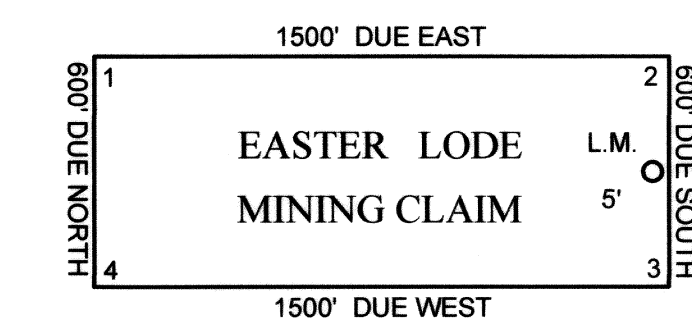


TYPICAL CLAIM & CORNER NUMBERS



TIE POINT:

FROM THE WEST 1/4 CORNER OF SECTION 10, T5S, R66E, M.D.B.&M. BEAR S 61°11'23" W, 7267 FEET, TO THE NE CORNER OF EASTER 19.

ALL CLAIMS ARE 600' WIDE X 1500' LONG UNLESS NOTED.
 ALL LOCATION MONUMENTS ARE 5' IN FROM THE END CENTER UNLESS NOTED.
 ALL LOCATION MONUMENTS AND CLAIM CORNERS ARE 1.5" X 1.5" X 4' WOOD POST.
 UNSURVEYED TOWNSHIP, SECTIONS ARE PROJECTED FROM NEVADA G.C.D.B.

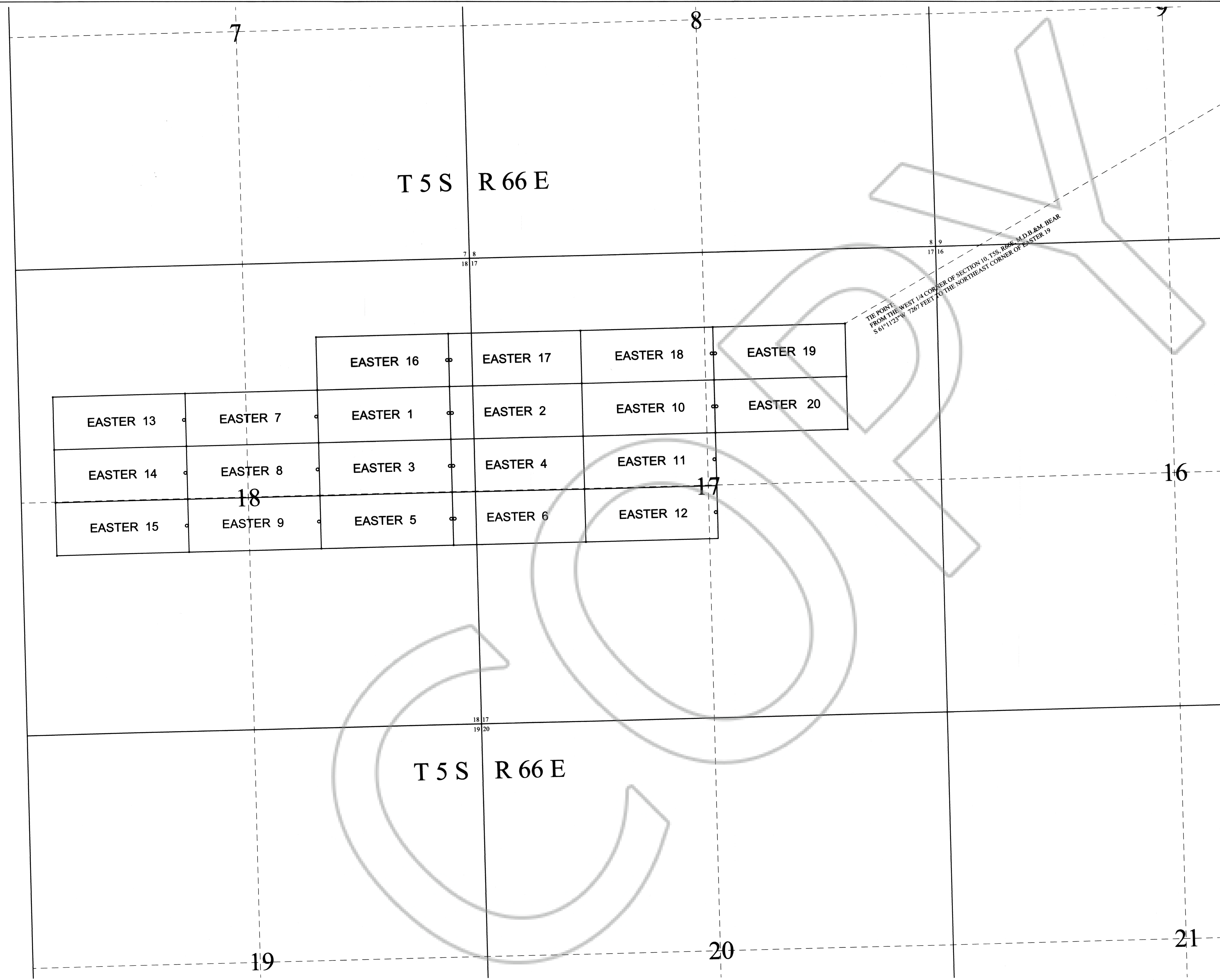
● INDICATES A FOUND SECTION CORNER (BRASS CAP).

LOCATION DATES:

SEPTEMBER 16, 2009 ----- (EASTER 1 - 9, & 13-20.
 OCTOBER 3, 2009 ----- (EASTER 10 -12.

NEVADA EAGLE RESOURCES LLC
 P.O. BOX 18127
 RENO, NEVADA 89511

EASTER LODGE MINING CLAIMS
 NUMBERS [1-9 & 13-20]
 SECTIONS 17 & 18, T5S, R66E, M.D.B.&M.
 LINCOLN COUNTY, NEVADA



T 5 S R 66 E

T 5 S R 66 E

		EASTER 16	EASTER 17	EASTER 18	EASTER 19
EASTER 13	EASTER 7	EASTER 1	EASTER 2	EASTER 10	EASTER 20
EASTER 14	EASTER 8	EASTER 3	EASTER 4	EASTER 11	
EASTER 15	EASTER 9	EASTER 5	EASTER 6	EASTER 12	

TIE POINT
 FROM THE WEST 1/4 CORNER OF SECTION 10, T5S, R66E, M.D.B.&M. BEAR
 S 61°11'23" W, 7267 FEET TO THE NORTHEAST CORNER OF EASTER 19