

EXPLANATION

- Corner Witness Post
- Claim Location Monument
- Claim Corner Monument
- - - Projected Section Line from BLM GCDB Data
- ◇ Survey Corner Monument Projected From BLM GCDB Data
- ▭ IS 184 Previously Located Valid Mining Claims

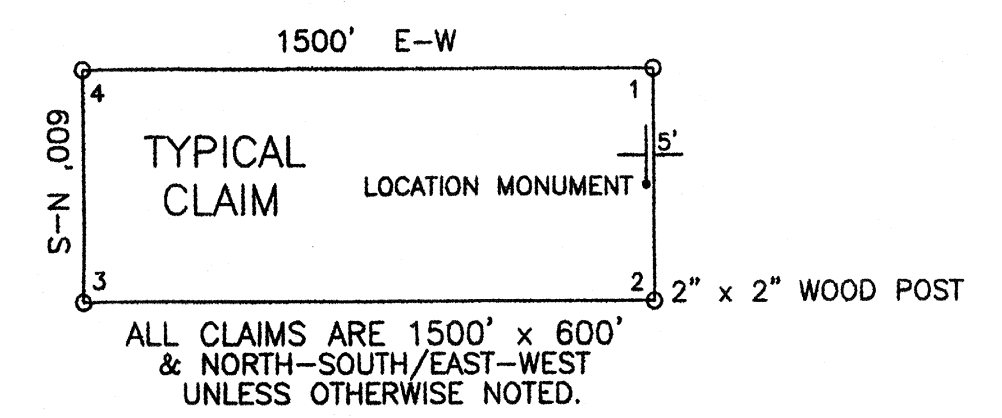
Note: All claims are tied to USMM No. 326 which is located approximately 4,500 feet NORTH and 1,020 feet EAST of the projected SW Corner of Section 31 Township 3 South, Range 57 East, Mount Diablo Base & Meridian.

CLAIM LOCATION DATES:

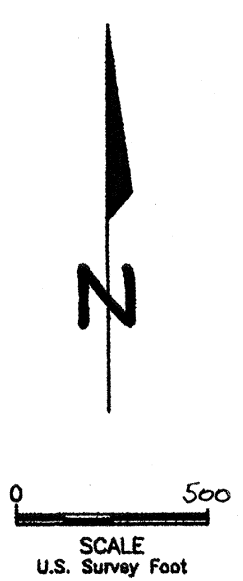
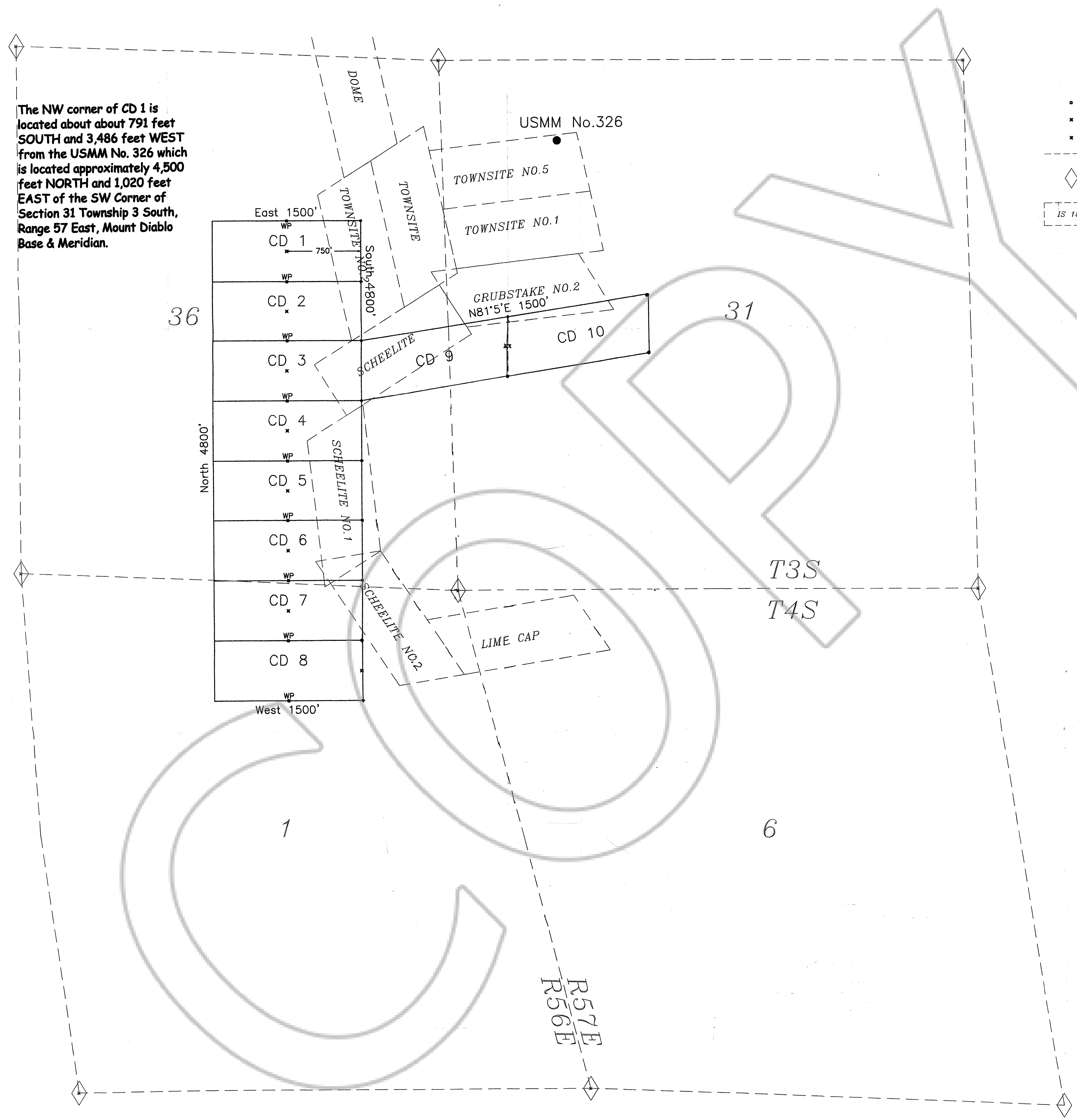
CD 1-10 September 1, 2009

CD 1-10 located by:

Johanna M. Perkins
3704 E. 134th Court
Thornton, CO 80241



The NW corner of CD 1 is located about about 791 feet SOUTH and 3,486 feet WEST from the USMM No. 326 which is located approximately 4,500 feet NORTH and 1,020 feet EAST of the SW Corner of Section 31 Township 3 South, Range 57 East, Mount Diablo Base & Meridian.



CD LODGE CLAIMS 1-10
CLAIM MAP
T3/4S, R56/57E, MDBM
LINCOLN COUNTY NEVADA
 Drawn By: J.M.P. Date: September 2009