


# RECORD OF SURVEY

**FOR WINGFIELD NEVADA GROUP**  
 BEING SECTION 13 AND SECTIONS 19 THRU 36,  
 TOWNSHIP 11 SOUTH, RANGE 63 EAST, MOUNT DIABLO MERIDIAN,  
 TOGETHER WITH  
 SECTIONS 1, 2, 3, 6, 7, 10, 11, 12, 13, 14, 15, 18, 19 AND 22 THRU 36,  
 TOWNSHIP 12 SOUTH, RANGE 63 EAST, MOUNT DIABLO MERIDIAN,  
 LINCOLN COUNTY, STATE OF NEVADA

DOC # 0134336  
 10/02/2009 08:25 AM  
**Official Record**  
 Recording requested by  
 VTN CONSULTING ENGINEERS  
 Lincoln County - NV  
 Leslie Boucher - Recorder  
 Fee: \$81.00 Page 1 of 7  
 49111 Recorded By: RE  
 Book-C Page- 0492  
  
 0134336

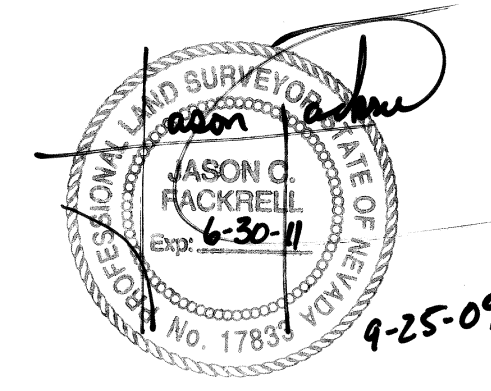
## LEGEND

- SHEET LIMITS
- SECTION LINE
- - - - - QUARTER SECTION LINE
- - - - - SIXTEENTH SECTION LINE
- S20** SECTION DESIGNATION

## SURVEYOR'S CERTIFICATE

- I, JASON C. FACKRELL, A PROFESSIONAL LAND SURVEYOR LICENSED IN THE STATE OF NEVADA, AS AGENT FOR VTN NEVADA, CERTIFY THAT:
- THIS MAP REPRESENTS THE RESULTS OF A SURVEY CONDUCTED UNDER MY DIRECT SUPERVISION AT THE INSTANCE OF WINGFIELD NEVADA GROUP.
  - THE LANDS SURVEYED LIE WITHIN SECTION 13, AND SECTION 19 THRU 36, TOWNSHIP 11 SOUTH, RANGE 63 EAST, M.D.M., AND SECTIONS 1, 2, 3, 4, 6, 7, 10, 11, 12, 13, 14, 15, 18, 19, 23 THRU 26 AND 29 THRU 36, TOWNSHIP 12 SOUTH, RANGE 63 EAST, M.D.M., LINCOLN COUNTY, NEVADA. THIS SURVEY WAS COMPLETED ON SEPTEMBER 23, 2009.
  - THIS SURVEY COMPLIES WITH APPLICABLE STATUTES OF THIS STATE AND ANY LOCAL ORDINANCE EFFECT ON THE DATE THAT THE SURVEY WAS COMPLETED, AND THE SURVEY WAS CONDUCTED IN ACCORDANCE WITH CHAPTER 625 OF THE NEVADA ADMINISTRATIVE CODE.
  - THE MONUMENTS DEPICTED ON THE MAP ARE OF THE CHARACTER SHOWN, OCCUPY THE POSITIONS INDICATED AND ARE OF SUFFICIENT NUMBER AND DURABILITY.

JASON C. FACKRELL  
 PROFESSIONAL LAND SURVEYOR  
 NEVADA LICENSE NO. 17833



## SURVEY REFERENCES

**RECORD OF SURVEYS: (CLARK COUNTY)**  
 RECORD OF SURVEY: FILE 154, PAGE 35

**RECORD OF SURVEYS: (LINCOLN COUNTY)**  
 RECORD OF SURVEY: FILE A, PAGE 307  
 RECORD OF SURVEY: FILE A, PAGE 316  
 RECORD OF SURVEY: DOCUMENT NO. 95919

### PARCEL MAPS: (LINCOLN COUNTY)

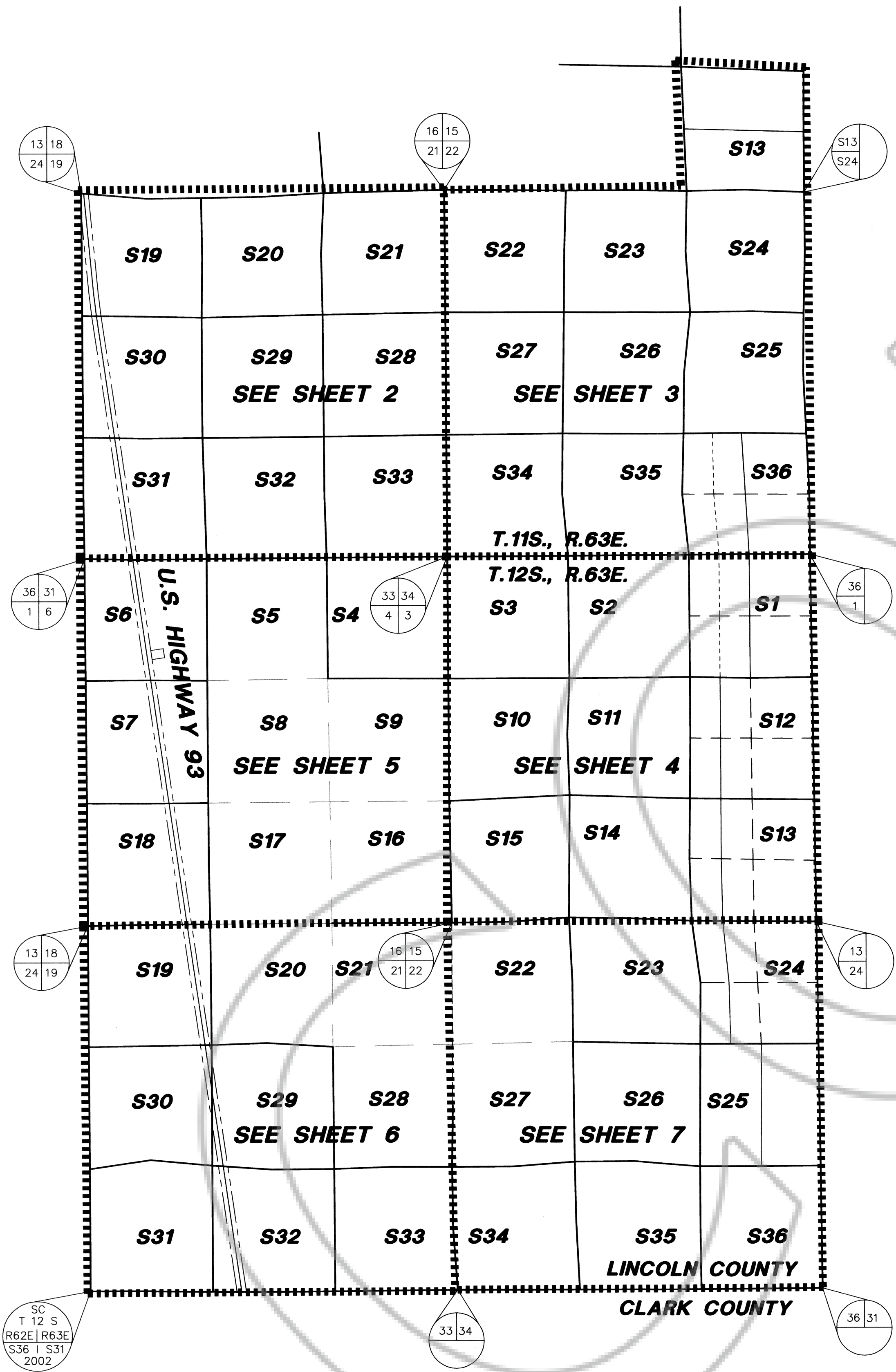
- PARCEL MAP: BOOK C, PAGE 183
- PARCEL MAP: BOOK C, PAGE 282
- PARCEL MAP: BOOK C, PAGE 283
- PARCEL MAP: BOOK C, PAGE 284
- PARCEL MAP: BOOK C, PAGE 285
- PARCEL MAP: BOOK B, PAGE 273
- PARCEL MAP: BOOK A, PAGE 314

### BUREAU OF LAND MANAGEMENT

- DEPENDANT RESURVEY AND METES AND BOUNDS SURVEY  
 T. 13 S., R. 63 E., M.D.M., NEVADA, DATED SEPTEMBER 26, 2004
  - DEPENDANT RESURVEY AND METES AND BOUNDS SURVEY  
 T. 13 S., R. 63 E., M.D.M., NEVADA, DATED SEPTEMBER 29, 2004
  - DEPENDANT RESURVEY AND METES AND BOUNDS SURVEY  
 T. 12 S., R. 63 E., M.D.M., NEVADA, DATED NOVEMBER 28, 2006
  - DEPENDANT RESURVEY AND METES AND BOUNDS SURVEY  
 T. 11 S., R. 63 E., M.D.M., NEVADA, DATED NOVEMBER 28, 2006
  - DEPENDANT RESURVEY AND METES AND BOUNDS SURVEY  
 T. 11 S., R. 63 E., M.D.M., NEVADA, DATED APRIL 14, 2009
- CORNER RECORDS DATED SEPTEMBER 7, 2006, FILED IN LINCOLN COUNTY RECORDS IN BOOK 222, PAGES 81-101

## BASIS OF BEARINGS

THE BASIS OF BEARINGS FOR THIS PROJECT IS SOUTH 89°38'06" WEST, BEING THE BEARING OF THE SOUTH LINE OF THE SOUTHEAST QUARTER (SE 1/4) OF SECTION 32, TOWNSHIP 12 SOUTH, RANGE 63 EAST, M.D.M., AS SHOWN ON THAT CERTAIN RECORD OF SURVEY ON FILE IN THE OFFICE OF THE COUNTY RECORDER, CLARK COUNTY, NEVADA IN FILE 154 OF SURVEYS AT PAGE 34.



**SHEET INDEX**  
 NOT TO SCALE

CONSULTING ENGINEERS • PLANNERS • LAND SURVEYORS

2727 SOUTH RAINBOW BOULEVARD  
 LAS VEGAS, NEVADA 89146  
 (702) 873 - 7550 FAX (702) 362 - 2597

## RECORD OF SURVEY

FOR WINGFIELD NEVADA GROUP  
 BEING SECTION 13 AND SECTION 19 THRU 36,  
 TOWNSHIP 11 SOUTH, RANGE 63 EAST, MOUNT DIABLO MERIDIAN  
 TOGETHER WITH  
 SECTIONS 1,2,3,6,7,10,11,12,13,14,15,18,19, AND 22 THRU 36,  
 TOWNSHIP 11 SOUTH, RANGE 63 EAST, MOUNT DIABLO MERIDIAN  
 LINCOLN COUNTY, STATE OF NEVADA

SCALE: N/A	W.O.# 7165	DATE: AUG. 2009	SHEET	OF
FILE: G:\7165CTRL	DRN. BY: KAK	REV.:	1	7
\BR-ROS1	CKD. BY: JCF			



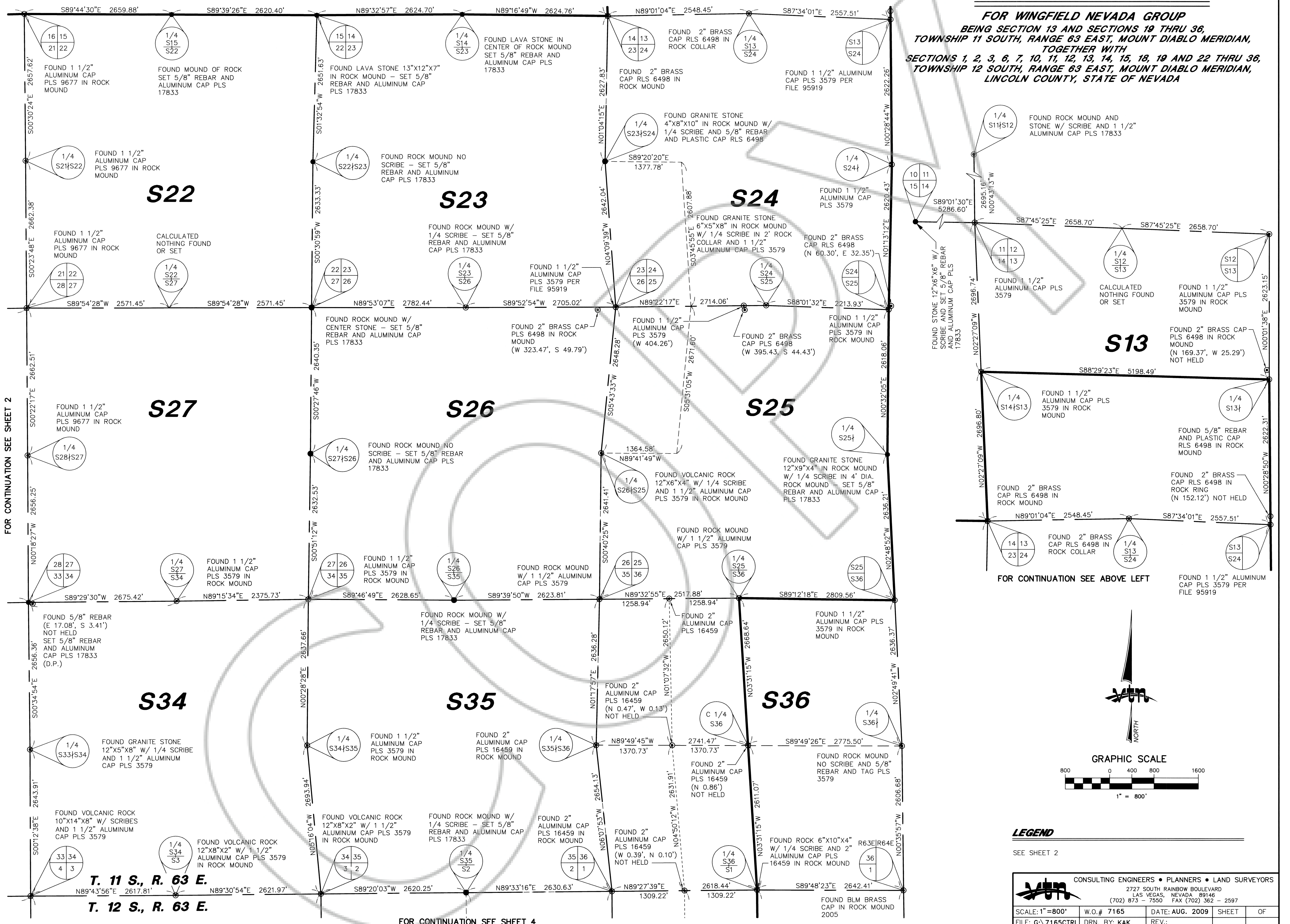




FOR CONTINUATION SEE BELOW RIGHT

# RECORD OF SURVEY

**FOR WINGFIELD NEVADA GROUP**  
**BEING SECTION 13 AND SECTIONS 19 THRU 36,**  
**TOWNSHIP 11 SOUTH, RANGE 63 EAST, MOUNT DIABLO MERIDIAN,**  
**TOGETHER WITH**  
**SECTIONS 1, 2, 3, 6, 7, 10, 11, 12, 13, 14, 15, 18, 19 AND 22 THRU 36,**  
**TOWNSHIP 12 SOUTH, RANGE 63 EAST, MOUNT DIABLO MERIDIAN,**  
**LINCOLN COUNTY, STATE OF NEVADA**



FOR CONTINUATION SEE SHEET 2

FOR CONTINUATION SEE ABOVE LEFT

FOR CONTINUATION SEE SHEET 4

**T. 11 S., R. 63 E.**  
 N89°43'56"E 2617.81' N89°30'54"E 2621.97'  
**T. 12 S., R. 63 E.**

### LEGEND

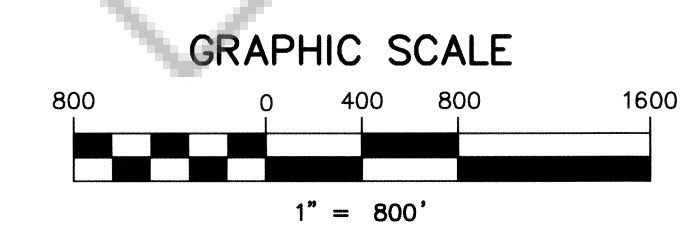
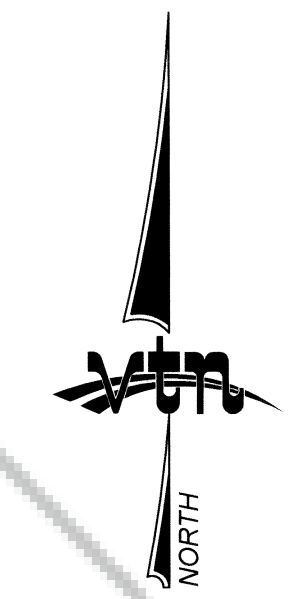
SEE SHEET 2

CONSULTING ENGINEERS • PLANNERS • LAND SURVEYORS			
2727 SOUTH RAINBOW BOULEVARD LAS VEGAS, NEVADA 89146 (702) 873 - 7550 FAX (702) 362 - 2597			
SCALE: 1"=800'	W.O.# 7165	DATE: AUG. 2009	SHEET OF
FILE: G:\7165CTRL	DRN. BY: KAK	REV.:	3 7
\BR-ROS3	CKD. BY: JCF		



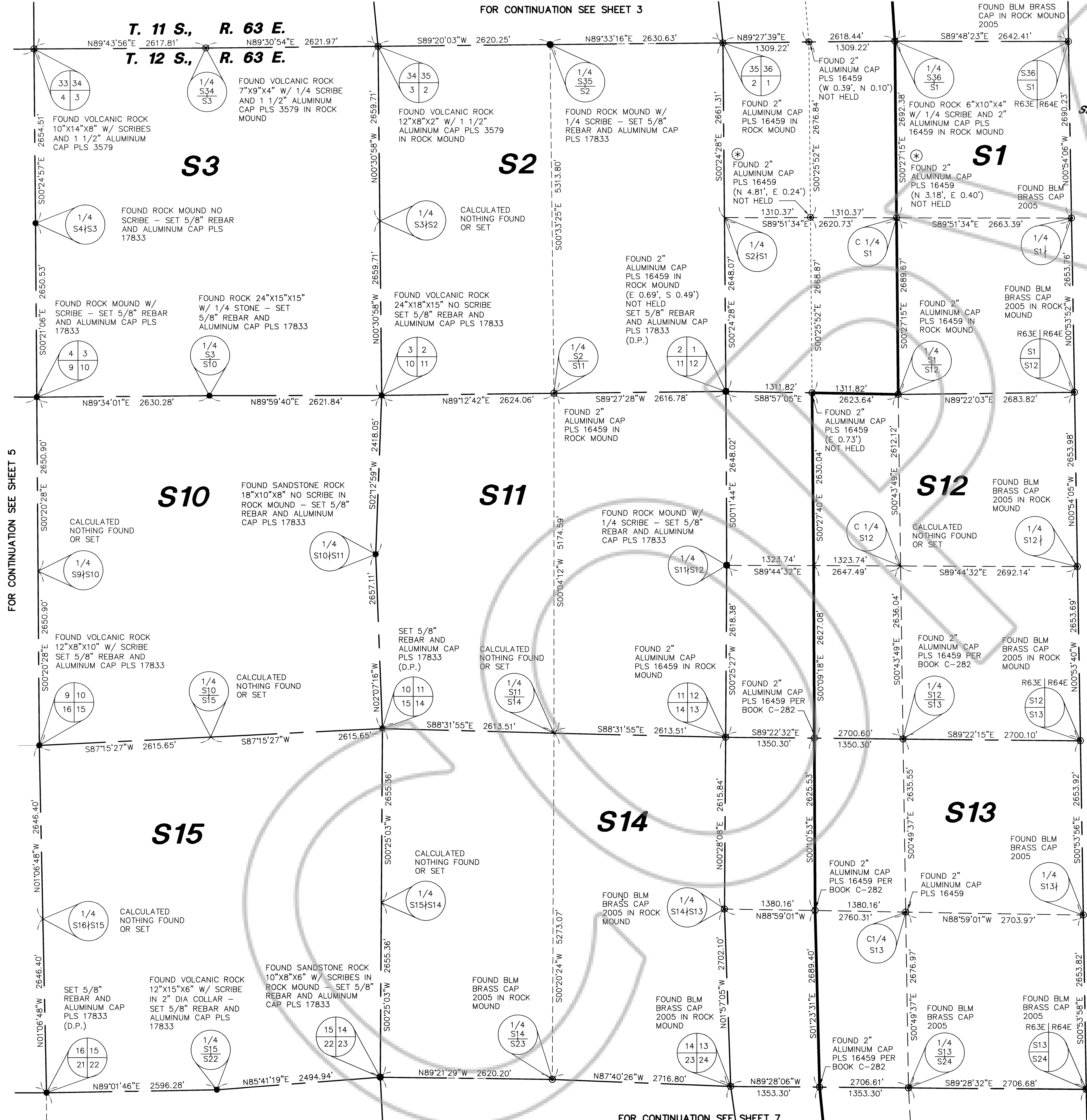
# RECORD OF SURVEY

FOR WINGFIELD NEVADA GROUP  
 BEING SECTION 13 AND SECTIONS 19 THRU 36,  
 TOWNSHIP 11 SOUTH, RANGE 63 EAST, MOUNT DIABLO MERIDIAN,  
 TOGETHER WITH  
 SECTIONS 1, 2, 3, 6, 7, 10, 11, 12, 13, 14, 15, 18, 19 AND 22 THRU 36,  
 TOWNSHIP 12 SOUTH, RANGE 63 EAST, MOUNT DIABLO MERIDIAN,  
 LINCOLN COUNTY, STATE OF NEVADA



## LEGEND

- FOUND MONUMENT AS INDICATED
- SET MONUMENT AS INDICATED
- SECTION LINE
- - - QUARTER SECTION LINE
- - - SIXTEENTH SECTION LINE
- - - HIGHWAY CENTERLINE
- - - HIGHWAY RIGHT-OF-WAY
- BOUNDARY LINE
- S20 SECTION DESIGNATION
- (D.P.) POSITION ESTABLISHED BY DOUBLE PROPORTION



CONSULTING ENGINEERS • PLANNERS • LAND SURVEYORS			
2727 SOUTH RAINBOW BOULEVARD LAS VEGAS, NEVADA, 89146 (702) 873-7550 FAX (702) 362-2597			
SCALE: 1"=800'	W.O.# 7165	DATE: AUG. 2009	SHEET
FILE: G:\7165CTRL	DRN. BY: KAK	REV.:	OF
\BR-ROS4	CKD. BY: JCF		4 7

FOR CONTINUATION SEE SHEET 7



# RECORD OF SURVEY

FOR WINGFIELD NEVADA GROUP  
 BEING SECTION 13 AND SECTIONS 19 THRU 36,  
 TOWNSHIP 11 SOUTH, RANGE 63 EAST, MOUNT DIABLO MERIDIAN,  
 TOGETHER WITH  
 SECTIONS 1, 2, 3, 6, 7, 10, 11, 12, 13, 14, 15, 18, 19 AND 22 THRU 36,  
 TOWNSHIP 12 SOUTH, RANGE 63 EAST, MOUNT DIABLO MERIDIAN,  
 LINCOLN COUNTY, STATE OF NEVADA

FOR CONTINUATION SEE SHEET 2

FOR CONTINUATION SEE SHEET 4

T. 11 S., R. 63 E.

T. 12 S., R. 63 E.

S6

S5

S4

S7

S8

S9

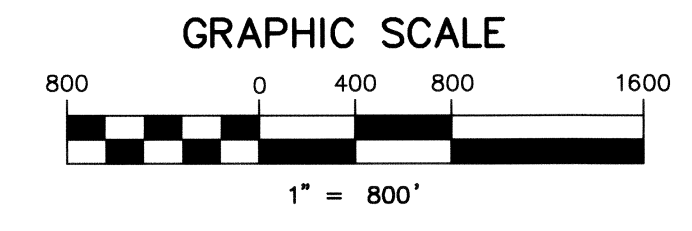
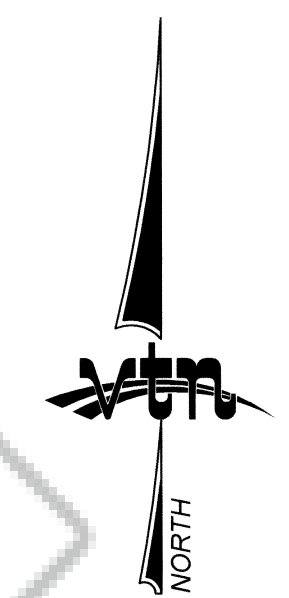
S18

S17

S16

U.S. HIGHWAY 93

U.S. 93 CENTERLINE



### LEGEND

- FOUND MONUMENT AS INDICATED
- SET MONUMENT AS INDICATED
- SECTION LINE
- QUARTER SECTION LINE
- SIXTEENTH SECTION LINE
- HIGHWAY CENTERLINE
- HIGHWAY RIGHT-OF-WAY
- BOUNDARY LINE
- S20**  
(D.P.) SECTION DESIGNATION
- POSITION ESTABLISHED BY DOUBLE PROPORTION

CONSULTING ENGINEERS • PLANNERS • LAND SURVEYORS  
 2727 SOUTH RAINBOW BOULEVARD  
 LAS VEGAS, NEVADA 89146  
 (702) 873-7550 FAX (702) 362-2597

SCALE: 1"=800'	W.O.# 7165	DATE: AUG. 2009	SHEET	OF
FILE: G:\7165CTRL	DRN. BY: KAK	REV.:	5	7
BR-ROS5	CKD. BY: JCF			

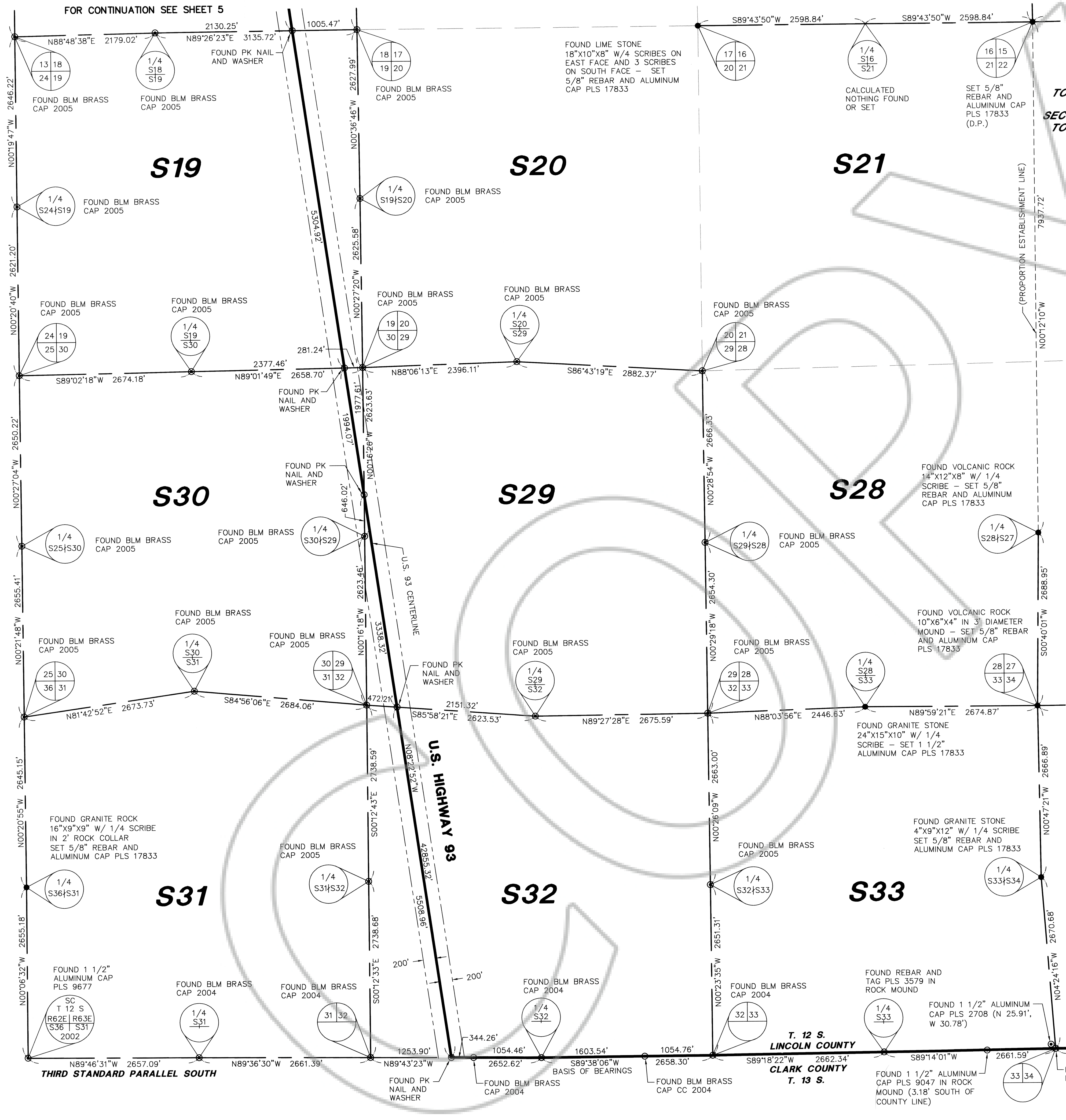
FOR CONTINUATION SEE SHEET 6



FOR CONTINUATION SEE SHEET 5

# RECORD OF SURVEY

FOR WINGFIELD NEVADA GROUP  
 BEING SECTION 13 AND SECTIONS 19 THRU 36,  
 TOWNSHIP 11 SOUTH, RANGE 63 EAST, MOUNT DIABLO MERIDIAN,  
 TOGETHER WITH  
 SECTIONS 1, 2, 3, 6, 7, 10, 11, 12, 13, 14, 15, 18, 19 AND 22 THRU 36,  
 TOWNSHIP 12 SOUTH, RANGE 63 EAST, MOUNT DIABLO MERIDIAN,  
 LINCOLN COUNTY, STATE OF NEVADA



**LEGEND**

- FOUND MONUMENT AS INDICATED
- SET MONUMENT AS INDICATED
- SECTION LINE
- - - QUARTER SECTION LINE
- - - SIXTEENTH SECTION LINE
- - - HIGHWAY CENTERLINE
- - - HIGHWAY RIGHT-OF-WAY
- - - PROPORTION ESTABLISHMENT LINE
- BOUNDARY LINE

**S20**  
(D.P.)

SECTION DESIGNATION

POSITION ESTABLISHED BY DOUBLE PROPORTION

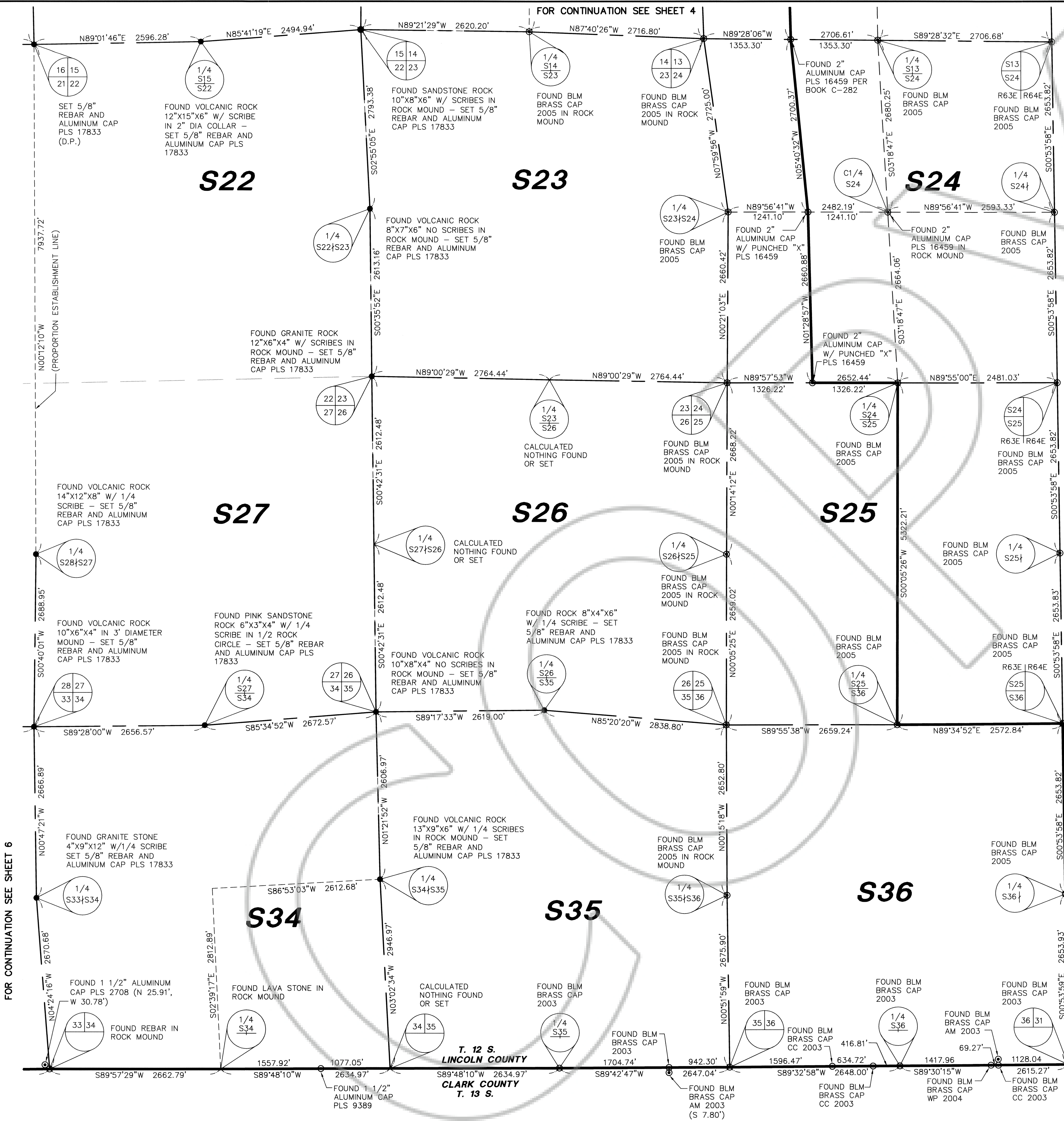
CONSULTING ENGINEERS • PLANNERS • LAND SURVEYORS  
 2727 SOUTH RAINBOW BOULEVARD  
 LAS VEGAS, NEVADA 89146  
 (702) 873-7550 FAX (702) 362-2597

SCALE: 1"=800'	W.O.# 7165	DATE: AUG. 2009	SHEET	OF
FILE: G:\7165CTRL	DRN. BY: KAK	REV.:	6	7
\BR-ROSS	CKD. BY: JCF			



# RECORD OF SURVEY

FOR WINGFIELD NEVADA GROUP  
 BEING SECTION 13 AND SECTIONS 19 THRU 36,  
 TOWNSHIP 11 SOUTH, RANGE 63 EAST, MOUNT DIABLO MERIDIAN,  
 TOGETHER WITH  
 SECTIONS 1, 2, 3, 6, 7, 10, 11, 12, 13, 14, 15, 18, 19 AND 22 THRU 36,  
 TOWNSHIP 12 SOUTH, RANGE 63 EAST, MOUNT DIABLO MERIDIAN,  
 LINCOLN COUNTY, STATE OF NEVADA



**LEGEND**

- FOUND MONUMENT AS INDICATED
- SET MONUMENT AS INDICATED
- SECTION LINE
- - - QUARTER SECTION LINE
- - - SIXTEENTH SECTION LINE
- - - HIGHWAY CENTERLINE
- - - HIGHWAY RIGHT-OF-WAY
- - - PROPORTION ESTABLISHMENT LINE
- BOUNDARY LINE
- S20** SECTION DESIGNATION
- (D.P.) POSITION ESTABLISHED BY DOUBLE PROPORTION

CONSULTING ENGINEERS • PLANNERS • LAND SURVEYORS 2727 SOUTH RAINBOW BOULEVARD LAS VEGAS, NEVADA 89146 (702) 873 - 7550 FAX (702) 362 - 2597			
SCALE: 1" = 800'	W.O.# 7165	DATE: AUG. 2009	SHEET OF
FILE: G:\7165CTRL	DRN. BY: KAK	REV.:	7 7
BR-ROS5	CKD. BY: JCF		