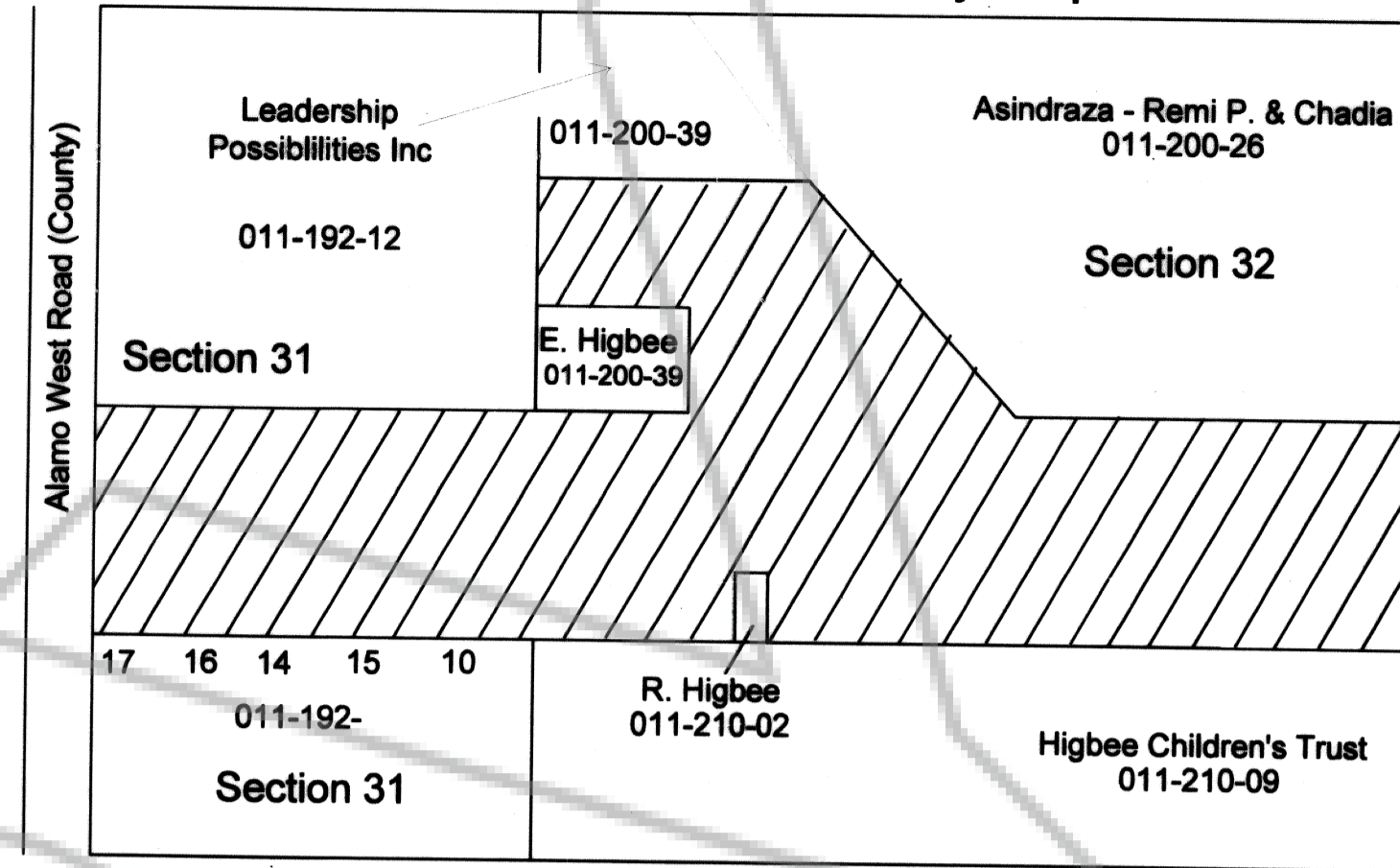


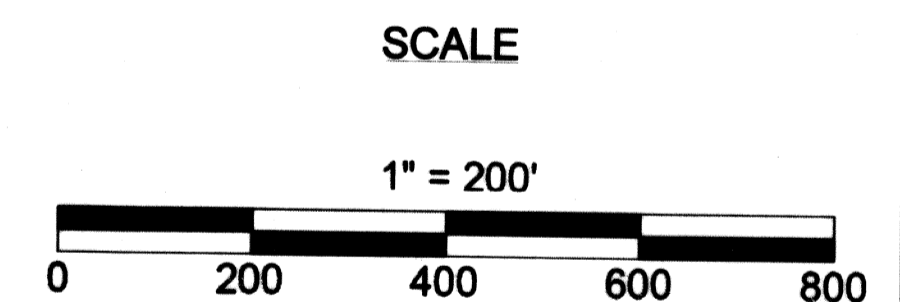
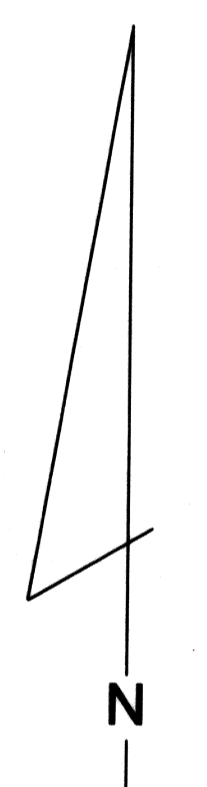
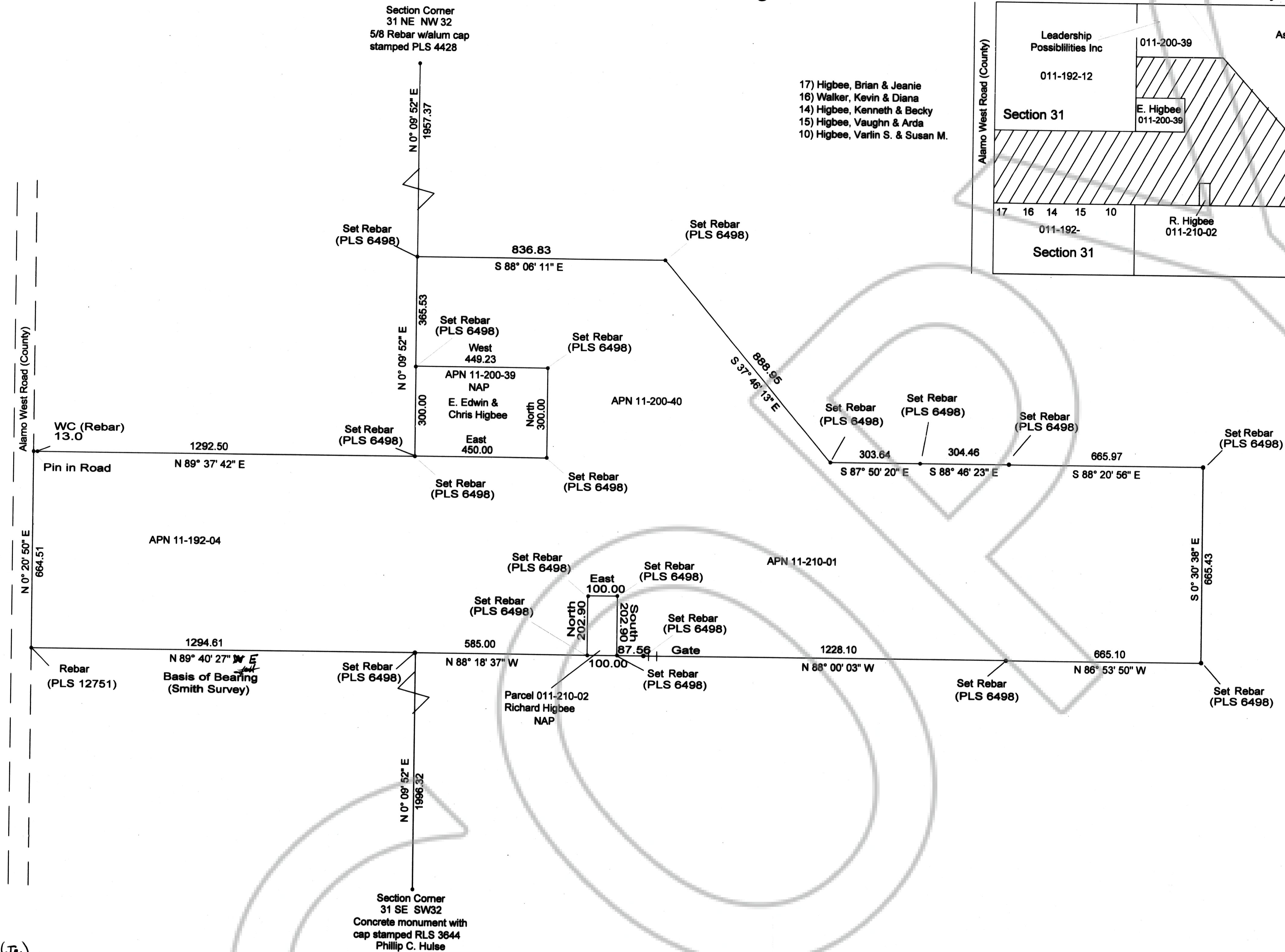
# Township 6 South Range 61 East MDM

## Vicinity Map



DOC # 0133823  
 05/13/2009 09:20 AM  
**Official Record**  
 Recording requested by  
 FRANK HULSE  
 Lincoln County - NV  
 Leslie Boucher - Recorder  
 Fee: \$21.00 Page 1 of 1  
 8077 Recorded By: LP  
 Book - C Page - 0465  
 0133823  
 Lincoln County, Nevada Records  
 Fee \_\_\_\_\_ Deputy \_\_\_\_\_

- 17) Higbee, Brian & Jeanie
- 16) Walker, Kevin & Diana
- 14) Higbee, Kenneth & Becky
- 15) Higbee, Vaughn & Arda
- 10) Higbee, Varlin S. & Susan M.



(Jr.)  
 I, Frank C. Hulse, a Professional Land Surveyor within the State of Nevada, do hereby certify that this Record of Survey consisting of one sheet correctly and accurately delineates a survey made by me at the request of E. Edwin Higbee and Richard Earl Higbee (brothers) of a portion of Sections 31 & 32 of Township 6 South, Range 61 East, M.D.M. All monuments are of the character noted and occupy the positions shown hereon. The survey was completed on the 13th day of May 2009 and the survey conforms to the definitions and provisions of N.R.S. 625.340 thru 625.380 inclusive.

*Frank C. Hulse*  
 Frank C. Hulse  
 P.L.S.6498

PROFESSIONAL LAND SURVEYOR  
 FRANK C. HULSE  
 NO. 6498  
 STATE OF NEVADA  
 EXPIRES 30 June 2011

RECORD OF SURVEY of portions of Sections 31 & 32  
 Within T 6 S, R 61 E, M.D.M. (Lincoln County)  
 Prepared at the instance of E. Edwin Higbee & Richard Earl Higbee (brothers)  
 Frank C. Hulse/jlm  
 May 2009