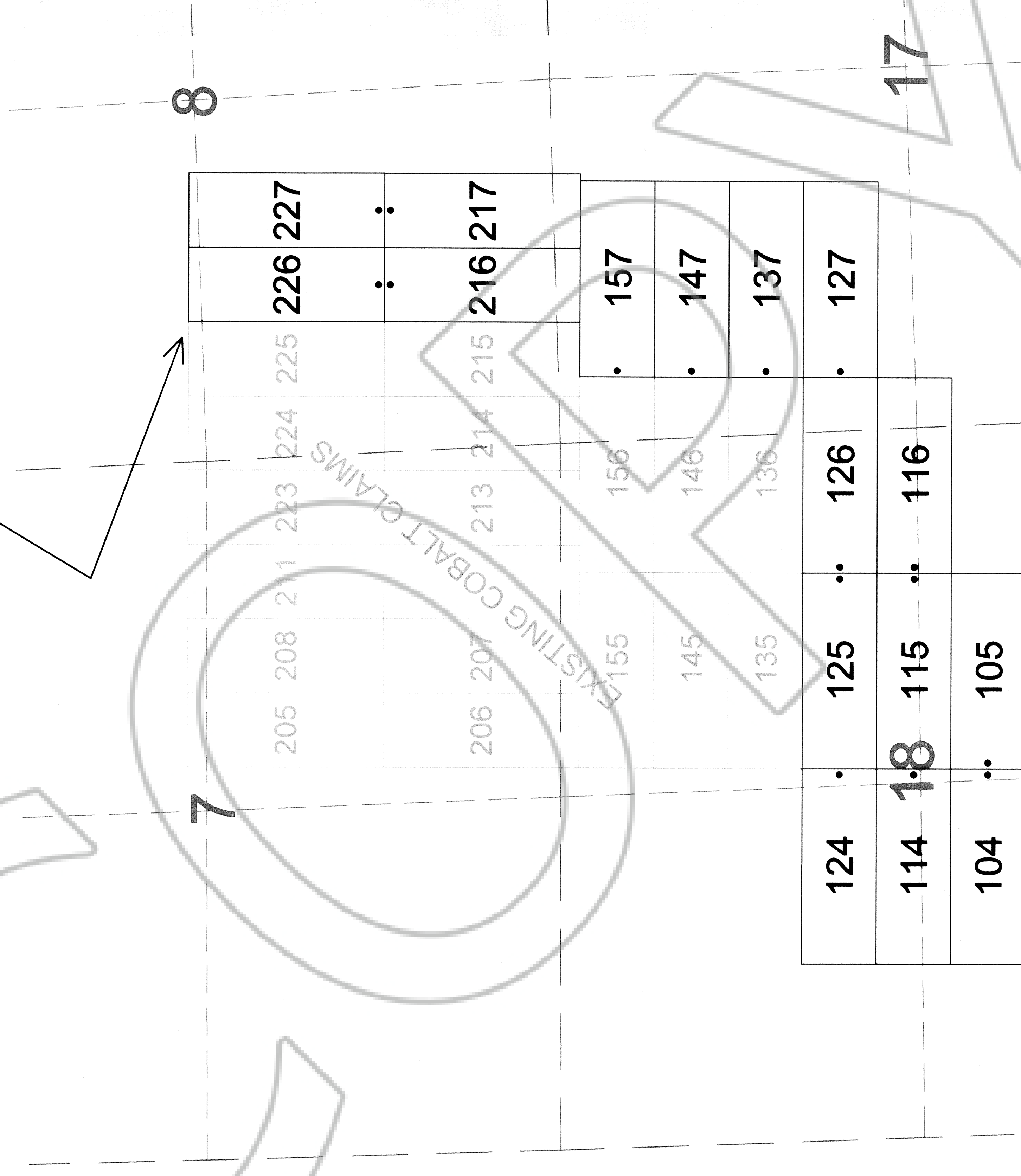


Scale 1" = 500'
1:6000

TIE POINT DATA:
THE NORTHWEST CORNER OF COBALT 226 LIES APPROXIMATELY
1,176 FEET EAST AND 2,483 FEET SOUTH OF THE NORTHWEST
CORNER OF SECTION 8, T.3S., R.67E., M.D.B.M.



124	•	125	••	126	•	127
114	1•8	115	••	116		
104	••	105				

DOC # 0133706
12:46 PM
Official Record
LINCOLN COUNTY RECORDING SERVICES
Lincoln County - NV
Leslie Boucher - Recorder
RPT: \$24.00
Recorded By: LB
Book-248 Page-0284
0133706

LOCATION DATES:
January 29, 2009 - Cobalt 104-105, 114-116, 124-127, 137,
147, 157, 216-217, 226-227

(16 Total Claims)

NOTES:
LOCATION MONUMENTS SET 10' FROM CLAIM END
CENTERLINES. ALL LOCATION MONUMENTS AND CLAIM
POSTS ARE 2"x2"x4' WOODEN STAKES.
DASHED SECTION LINES INDICATE PROJECTED SECTIONS.

WINNING SERVICES
Cobalt
Company • Survey • Service

Lincoln County
369 - 5th STREET
PH: (775) 778-6668 ELKO, NV 89801 FAX: (775) 778-6867

DATE: April, 2009
DRAWN BY: [Signature]

Lincoln County - NV
73460 Desert Greens Drive N., Palm Desert, CA 92260
Cobalt Lode Claims
T.3S., R.67E; Lincoln County, Nevada