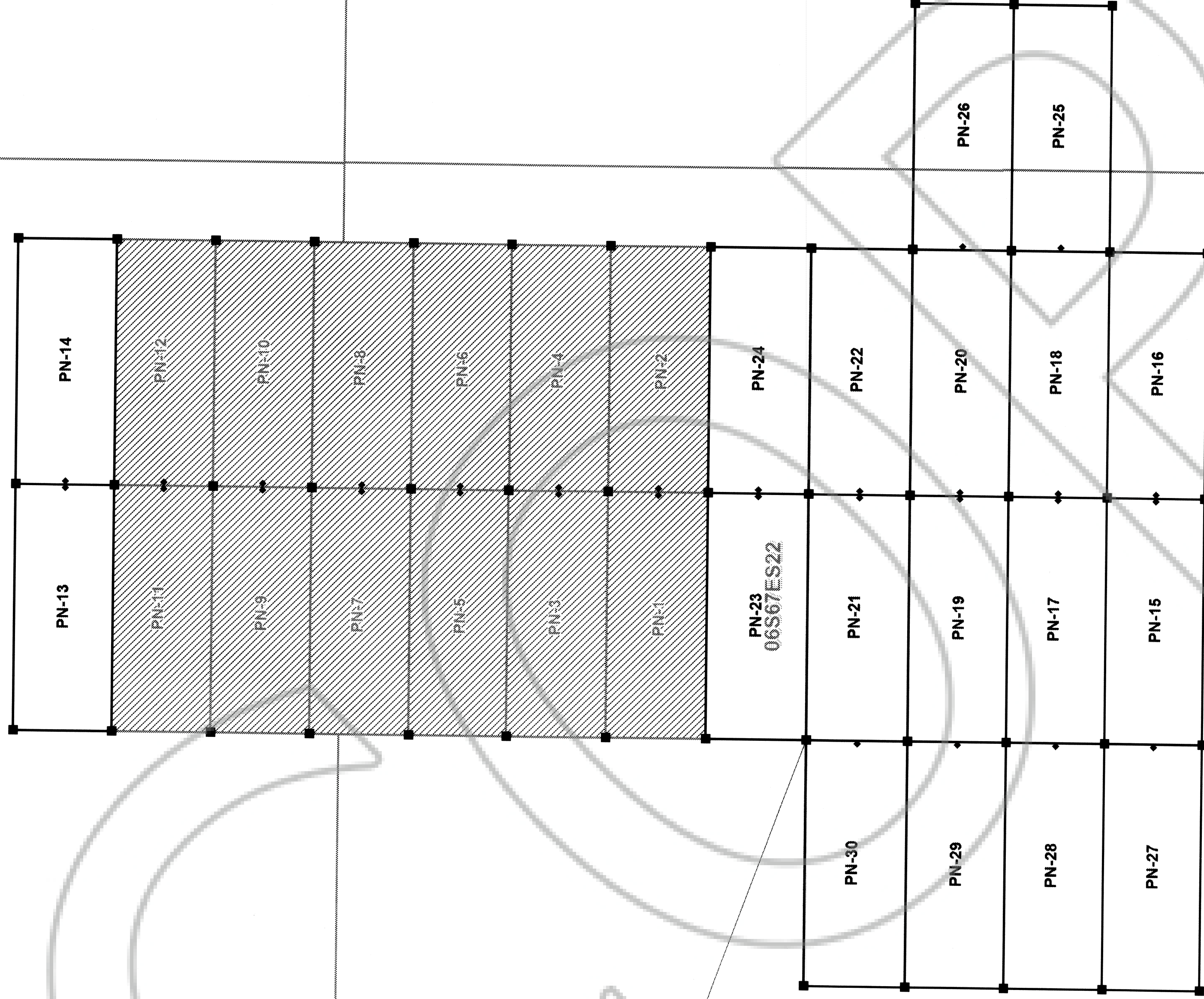


06S67ES15

06S67ES14



(BM-5998)
WGS84
Lat 37.413715
Lon -114.492364

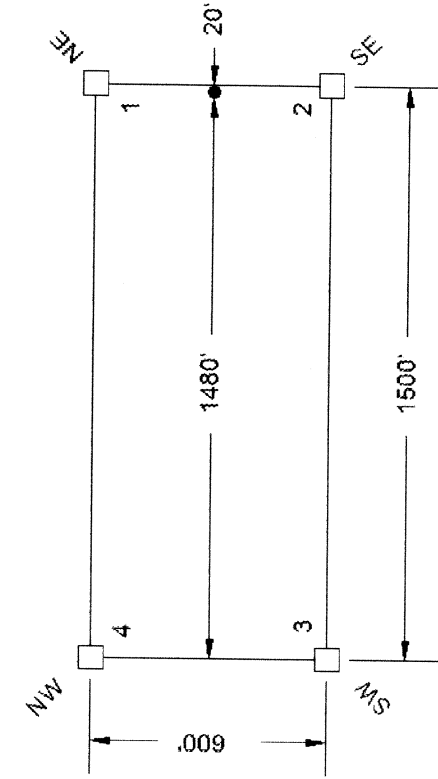
PN-23
06S67ES22

06S67ES23

06S67ES27

06S67ES26

TYPICAL CLAIMS



LOCATION DATES:
13-30 located February 24, 2009

NOTES: From the NW corner of PN-21 to BM-5998
Bearing south 70 deg. 7 min. 44 sec east, distance of 3564 ft.

DOC # 0133650
04/13/2009 03:45 PM
Office of the
Recorder
LINCOLN COUNTY, NEVADA
County - NV
Leslie Boucher - Recorder
Page 1 of 1
Book-248 Page-0337



PN CLAIMS
PENNSYLVANIA
MINING DISTRICT

LOCATED BY:
ZACHARY S. HENDERSON
AGENT FOR:
INTOR RESOURCES INC.
231 Cherry Avenue, Suite 201
Auburn, CA 95603

PH: (530) 887-8134
EMAIL: billhenderson@earthlink.net

DATE:	FILE NAME	REVISION NUMBER
DECEMBER 2008	MAPINFO FILE	MAPINFO FILE
PROJECTION: LAT LONG WGS84	PLOT SCALE: 1" = 500'	DRAWN BY: ZSH
		MODIFIED BY:

1 / 1

T 6 SOUTH, R 87 EAST
SECTION 14, 15, 22, 23, 26, 27
COUNTY, LINCOLN, STATE OF NEVADA